

Jamestown Quarry Comprehensive Development Plan



Owner:

Fitchburg Partners, LLC
80 Ottawa Ave., Suite 410
Grand Rapids, MI 49503
Contact: Jeffrey A. Hundley

Project Planner:

JSD Professional Services, Inc.
507 W. Verona Ave., Suite 500
Verona, WI 53593
Contact: Chris Dawson

Submitted April 23rd, 2024

Amended August 12, 2024, September 18, 2025, **December 15, 2025**

OVERVIEW

The Jamestown Quarry Comprehensive Development Plan (JQCDP) provides a framework for the implementation of the City of Fitchburg’s vision for redevelopment along Fitchrona Road as detailed in the Anton Drive Redevelopment Plan adopted in 2017. The JQCDP contains approximately 67 acres of historically quarried lands owned by Wingra on the City’s northwest side. Serving as a decision-making framework, the JQCDP is intended to aid in private and public decisions regarding land division, zoning, and infrastructure investment. Based on the development expectations expressed by City policies and published planning documents, the CDP proposes a blend of multifamily housing, commercial retail, and public open space that provides a coherent transition between the residential properties in the Jamestown neighborhood to the north, the commercial lands of Orchard Pointe to the south, and the residential properties of the Maple Prairie Neighborhood to the west. At this time, there are no development proposals for the active Wingra Stone site and adjacent parcels (hereafter referred to as the “infield”). While included in the CDP, these parcels are proposed to maintain their current land use and the following CDP language will focus on lands proposed to redevelop and rezone in the near future. Future redevelopment of the infield will require an amendment to the JQCDP.

As Wingra Stone’s quarrying and materials processing operations are gradually exhausted, previously quarried areas are being rededicated to development opportunities such as those seen in the Orchard Pointe area. Fitchburg Partners LLC is a development group that intends to advocate the transition and development of the area into commercial, residential, and public open space land uses consistent with this CDP, the Anton Drive Redevelopment Plan, and the City’s Comprehensive Plan Future Land Use Plan Map (Appendix D). It should be noted that at the time of this application, the City’s comprehensive plan map had not been updated to reflect the minor comprehensive plan amendment approved by the Common Council on December 9, 2025 which replaced the Medium Density Residential land use with High Density Residential land use within the CDP area.

This submittal constitutes a Comprehensive Development Plan under the City of Fitchburg’s Chapter 24 land division ordinances. Following feedback from the public and from City officials on this CDP, the development team intends to proceed with platting and rezoning of parcels within the CDP area. This document will repeal and replace any prior CDP documents recorded upon the affected parcels.

EXISTING CONDITIONS

Site Context

The property is currently covered by brush and wooded areas that have remained largely undisturbed following the 2017 extension of Fitchrona Road through the quarry property. Wooded areas line the northern boundary and the western portion of the property and a small sediment pond is located on the site. Recent construction activities have added large soil stockpiles stormwater treatment ponds to the area as the redevelopment of the site progresses. The CDP area is bordered by the City of Fitchburg’s Jamestown Neighborhood to the north and the City of Madison’s Maple Prairie Neighborhood to the west. Further site context is provided in Appendix A.

Land Ownership

This CDP impacts parcels owned by various parties. Upon approval of the CDP, all affected parcel owners will be required to sign the recording document of the CDP.

Zoning

The existing site is zoned as Planned Development District – General Implementation Plan (PDD-GIP) and Planned Development District – Specific Implementation Plan (PDD-SIP). See Appendix B.

Topography

As shown in Appendix C, the existing site has a wide range of elevations as a result of the historic quarry operations both excavating and backfilling materials on site. The lands immediately west of Fitchrona Road are gradually sloping fields that extend to wooded ridges climbing roughly 10-20' in elevation. The lands immediately north of Fitchrona Road rise steeply from the right-of-way to an elevation approximately 10-15' above the roadway before leveling to a more gradual grade. The western and northeastern portions of the site generally sit higher than the adjacent Maple Prairie neighborhood homes and Jamestown neighborhood homes respectively, while the northwestern portions of the site generally sit lower in elevation than the adjacent Jamestown neighborhood homes.

Historic quarry operations are primarily responsible for the large ridgeline within the western reaches of the site and for the drumlin-like topography parallel to McKee Road. The placement of fill materials on the site sourced from various construction projects and general quarry operations in the area contribute to the irregular topography of the development area.

Surface Water and Drainage

While no natural water features are present within the planning area, an existing sediment pond effectively captures stormwater runoff for approximately 15% of the site. The majority of the wooded western ridgeline and southwest corner of the planning area drains an additional 20% of the site to City of Madison stormwater infrastructure. The remaining lands drain to the City of Fitchburg stormwater network by way of Fitchrona Road and the Jamestown Neighborhood.

Utilities

Connections to City of Fitchburg sanitary sewer, storm sewer, and water utilities are available to serve the JQCDP area with many stubbed laterals already installed at the property lines along Fitchrona Road. While many of the public utilities serving the site were installed in 2017 and of adequate size to serve development in the area, the capacity of the existing storm sewer infrastructure is limited and the City of Fitchburg has no immediate plans to expand said capacity. Therefore, any development on the site will require extensive stormwater retention practices to limit discharges to the public sewer. Private utility connections for telecommunications, gas, and power are widely available in the region and are expected to readily serve the proposed site.

DEVELOPMENT PLAN

Overview

The JQCDP anticipates land users consisting of high density residential, mixed retail, and land dedicated to stormwater management and public open space. Types of commercial businesses that will be considered for the area will be retailers and businesses that would serve nearby residential neighborhoods and highway travelers, including hotels, retailers, car washes, financial offices, limited- and full-service restaurants, and other similar commercial uses. The goals of the JQCDP are to provide commercial development opportunities that introduce new retailers to the Fitchburg market and allow for additional franchising opportunities for retailers interested in expanding their presence in the City. In addition, the JQCDP intends to add significant residential space to serve

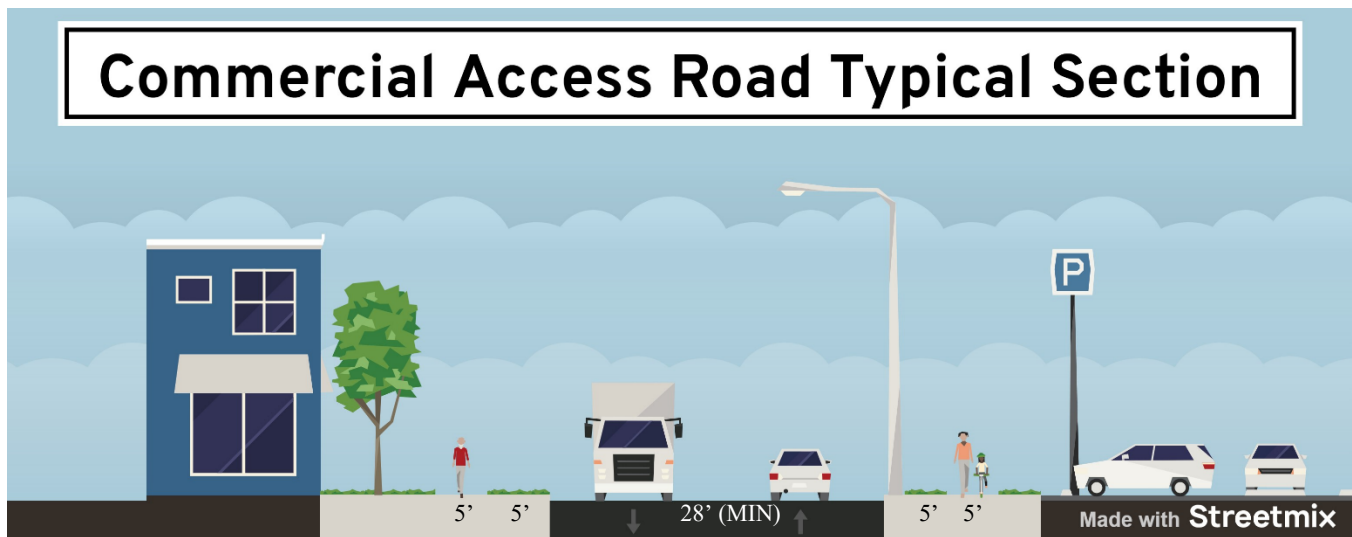
the high demand for housing within Fitchburg and the surrounding areas. As part of this CDP, a master plan concept has been prepared as shown in Appendix E. The concept corresponds with the intentions of the future land use map published in the 2017 Anton Drive Redevelopment Plan, the citywide future land use map published in 2020, and the City's comprehensive plan amendments approved in December of 2025.

Zoning

The Planned Development classification is proposed for this site to provide the flexibility that both the developer and the City of Fitchburg need to successfully implement a cohesive commercial and residential district. This flexibility will promote more efficient use of the developable lots for prospective tenants while maintaining design controls that facilitate a consistent aesthetic for the area.

Transportation

A private road will serve as the primary access for the commercial properties proposed along the site's McKee Road frontage. This road will also serve as a vital access route for the proposed mixed retail development, which will have additional driveway access points along Fitchrona Road. Proposed residential developments within the JQCDP will have dedicated driveway access connecting to Fitchrona Road.



It is anticipated that additional right-of-way will need to be dedicated as part of the JQCDP area's development in order to accommodate the turn bays and other features associated with proposed access points along Fitchrona Road. In particular, additional right of way will need to be dedicated on either side of Fitchrona Road to accommodate intersection controls necessary to serve the intersection of the commercial access road and Fitchrona Road. Access to and from McKee Road will be restricted to right-in/right-out turning movements with no additional right-of-way dedications necessary. Modifications to the existing median(s) and travel-ways will be designed to accommodate projected traffic volumes and movements detailed in Traffic Impact Analyses associated with the JQCDP area.

Aligning with the recommended mobility improvements suggested in the Anton Drive Redevelopment Plan, a multi-use path is proposed along the north and west sides of Fitchrona Road as part of the JQCDP. Further definition of path and other pedestrian connections to the Jamestown Neighborhood to the north will require consideration of the final grading plan for the site and future SIP submittals.

A 5'-wide sidewalk will be installed along the McKee Road right of way and will extend west to the municipal boundary where it is anticipated a pedestrian connection to the City of Madison will be constructed in the future. This proposed walkway will connect to a future bus stop located just west of Fitchrona Road per the guidance of Madison Metro.

Utilities

Private sanitary sewer main and public water main serving the small commercial lots will be installed beneath the proposed commercial access road and will connect to available facilities on Fitchrona Road and McKee Road. Further sanitary and water connections serving the large commercial and residential sites will be installed as extensions of existing stubbed laterals. The installation of water loops and private fire hydrants will follow the guidance of the Fitchburg Utility District and the requirements of applicable fire codes. Overall utility schematic layouts are provided in **Appendix F**.

Stormwater Management

Stormwater management practices for the development will primarily include regional ponds located in multiple locations throughout the site. Due to the extensive deposits of fill material that occurred throughout the lifetime of the historic quarry, much of the development is exempt from infiltration standards and will instead manage the quality and quantity of stormwater runoff on the site, including the use of proprietary filtering devices where practicable. There are, however, locations on the site where undisturbed native soil coincides with the desired location of stormwater treatment devices. In such locations, infiltration practices will be implemented to the extent possible. In all cases, stormwater treatment devices will follow the standards and guidelines set forth by the Wisconsin DNR, Dane County, and the City of Fitchburg.

Historically, the quarry located within the planning area was considered to be internally drained and no stormwater infrastructure was installed to serve the site. Following the extension of Fitchrona Road in 2017, runoff from the planning area now enters the public right of way and is collected by stormwater infrastructure installed during road construction. Areas downstream of the planning area such as Kapec Road and King James Way experience periodic flooding during large rain events, therefore stormwater discharge from the proposed development must be limited so as not to exacerbate these flooding hazards. As individual parcels develop, Fitchburg Public Works staff and other city officials will be consulted to determine whether runoff can be properly contained or if additional measures will be required to supplement the proposed regional ponds.

Land Use Density and Intensity

Commercial

Due to the variety of acceptable end users for the commercial lots within the JQCDP area, individual lots are anticipated to differ in open space ratios and parking requirements. The commercial mixed retail lot is anticipated to have a **maximum total building footprint of 80,000 square** feet while the commercial outlots within the planning area are anticipated to have building footprints generally between 4,000 and 6,000 square feet. All commercial buildings will be between 1-3 stories in height. One story commercial buildings within the planning area will be required to have a higher façade presence to provide the appearance of a two story or “near-two story” structure.

Residential

The multi-family lots within the JQCDP each propose 250-300 apartments for a density of approximately 25-46 dwelling units per acre(du/ac). These units will offer a wide range of market rate apartments for employees,

families, and general community renters, all served by a variety of on-site amenities. The proposed multi-family buildings are anticipated to be 3-5 stories in height.

All residential development within the planning area is anticipated to generally contain the following distribution of unit styles:

- 60% = 1 Bedroom/Studio
- 32% = 2 Bedroom
- 8% = 3 Bedroom

SIP applications will address land use densities and intensities of each individual lot within the planning area.

Management and Maintenance

The on-going management and maintenance of areas within private lot boundaries will be the responsibility of site owners. Maintenance of pedestrian areas, sidewalks, stormwater management facilities, utilities, etc. within the development and along the public streets will be the responsibility of the developer, association or private lot owner. The maintenance of the multi-use trails in the right-of-way of the public streets and within the dedicated public open space of the site after the developer installs them will be the responsibility of the City. A Developer's Agreement will be negotiated with the City to establish the assignment of these responsibilities as each site develops.

Timeline and Phasing

It is estimated that a complete buildout of the planning area may take three to five years. Construction of the internal commercial access road, installation of utilities to serve the various users of the planning area, and mass grading on the site is anticipated to be completed in 2026. This construction will also include the public right of way improvements necessary to properly serve the overall development.

The commercial lots along McKee Road are expected to be the first tenants to improve on the site and will proceed immediately following the installation of the access road and utilities serving each lot. The multifamily development in the northeast of the planning area is anticipated to complete construction in 2026 and the multifamily development in the northwest of the planning area is anticipated to complete construction in 2027.

Developer Involvement

The developer, Fitchburg Partners, LLC, is an established development group located in Grand Rapids, Michigan. They plan on being the long-term leaseholder of the smaller commercial properties and selling the larger commercial property and multifamily property to users whose intended developments are compatible with the guidelines contained within this CDP. The representatives of Fitchburg Partners have a history of implementing successful and high-quality retail clusters throughout the Midwest, including within Dane County. Previous developments have attracted high quality brands including users like Meijer, Costco, Hy-vee, Target, Home Depot and many others.

Public Involvement

Public engagement will be incorporated into the Jamestown Quarry Comprehensive Development Plan throughout the planning and development process. The design team has worked closely with City Staff, Alders, and neighborhood representatives in the development of this CDP submittal. Prior to this submittal, the development plans were discussed at a neighborhood meeting held on Thursday April 18th, 2024 at the park

shelter in Huegel Jamestown Park with approximately 20-30 area residents in attendance. The overall comments and questions raised by attendees during the meeting are generally summarized below:

Q: What is the anticipated timeline for development?

A: The first phases of construction are anticipated to begin by the end of 2024 with a full buildout of the planning area occurring within the next 3-5 years.

Q: What landscaping buffers will be provided to aid in visual screening and mitigation of dust from the active Wingra Stone operating plant?

A: A variety of landscaping berms are included in the proposed development plans including extensive plantings of coniferous trees to provide visual screening year-round. These trees will also aid in trapping airborne dust sourced from the Wingra Stone plant.

Q: Will improvements be made to drainage from the site?

A: The development team has coordinated closely with Fitchburg Public Works to meet capacity restrictions for stormwater runoff in the area. Drainage to City of Madison parcels will be limited so as to not exacerbate the known structural flooding concerns in the area.

Q: What type of housing is being proposed?

A: Market rate housing is proposed for all residential development on the site.

An additional neighborhood meeting was held on 3/27/25 at 5356 King James Way to present the concept of high-density residential housing in the northwest of the development. The meeting was attended by approximately 20 residents as well as City of Fitchburg staff members. Community feedback at the meeting provided an overall preference for higher density housing with larger setbacks (120') and earthen berm/landscape buffering vs. a lower density option that had a shorter setback (60') and no berm. The higher density housing was also preferred over a big box store at the site.

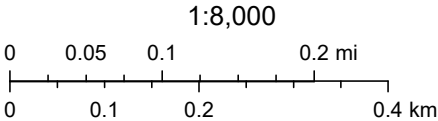
Overall, those in attendance at both meetings were in support of the proposed development plan and voiced their enthusiasm for the long-term goal of a less industrious land use in the area. Public involvement will continue to be incorporated into the planning process and throughout the development of the individual lots.

APPENDIX A - SITE CONTEXT MAP



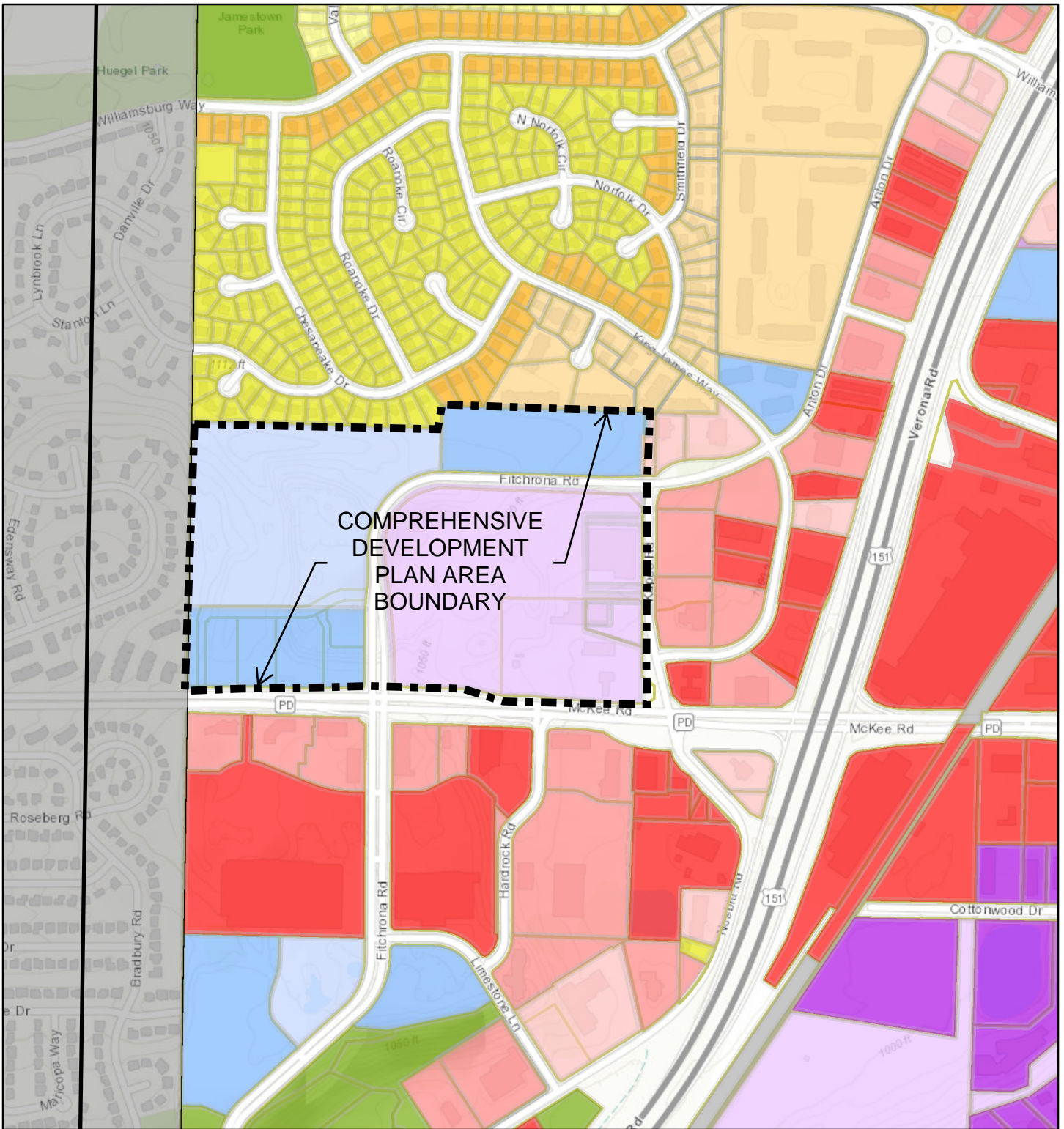
April 4, 2024

- Parcels
- Municipalities



*If approved, current CDP will require amendment when Wingra Stone operating plant and adjacent parcels are re-developed. There are no development plans for these parcels at this time and they will maintain current land uses and operations.

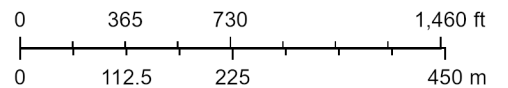
APPENDIX B - EXISTING ZONING MAP



9/18/2025, 11:06:11 AM

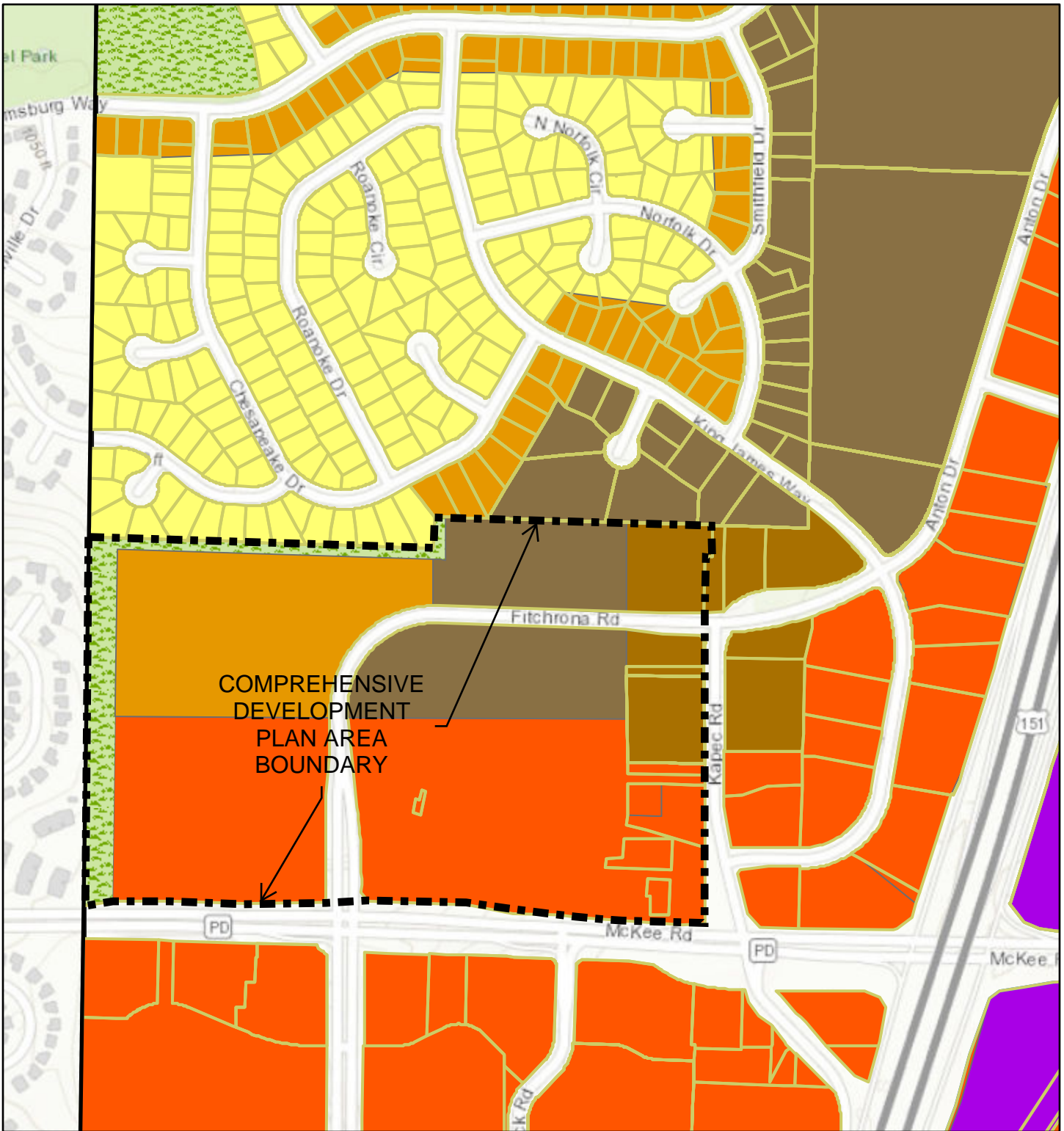
1:8,000

- | | |
|---|--|
| City Boundary | Rural Development |
| Low Density Residential | Highway Business |
| Planned Development District - Specific Implementation Plan | Professional Business |
| Low to Medium Density Residential | Specialized Industrial |
| Former R-4 Residential | General Industrial |
| Medium Density Residential | Planned Development District - General Implementation Plan |
| Park and Recreation | No Value |
| General Business | Parcels |
| | Citations |



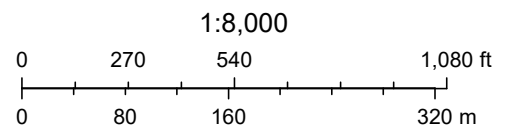
County of Dane, Esri Canada, Esri, HERE, Garmin, INCREMENT P, USGS, METI/NASA, EPA, USDA

APPENDIX D - FUTURE LAND USE MAP

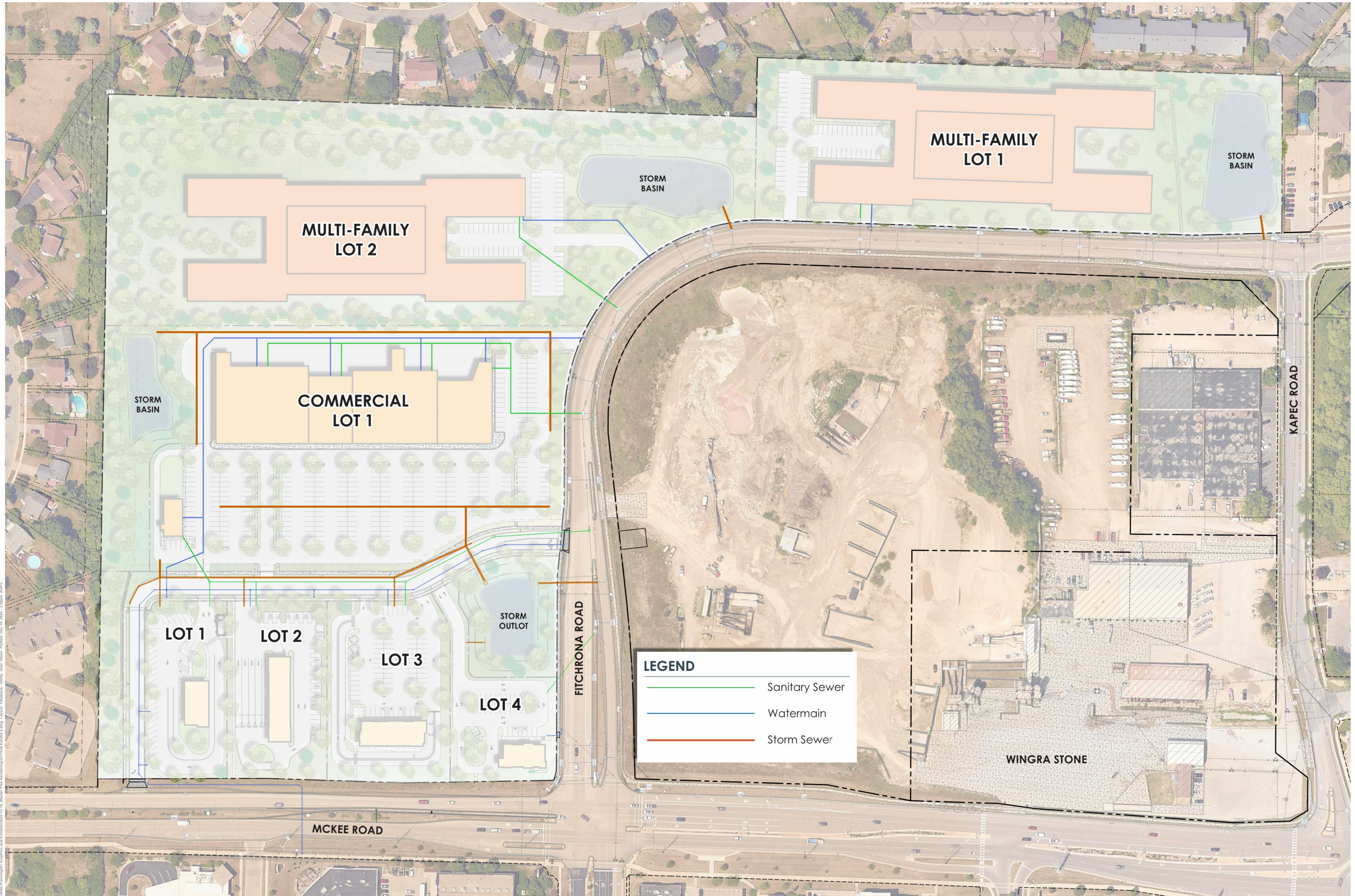


4/4/2024, 11:18:48 AM

- Parcels
- Future Landuse
- BUS - Business
- HDR - High Density Residential
- I-G - Industrial-General
- MDR - Medium Density Residential
- M-U - Mixed-Use
- P&C - Park & Conservancy
- LDR - Low Density Residential
- Completed Study Area
- City Limits



County of Dane, Esri Canada, Esri, HERE, Garmin, INCREMENT P, Intermap, USGS, METI/NASA, EPA, USDA



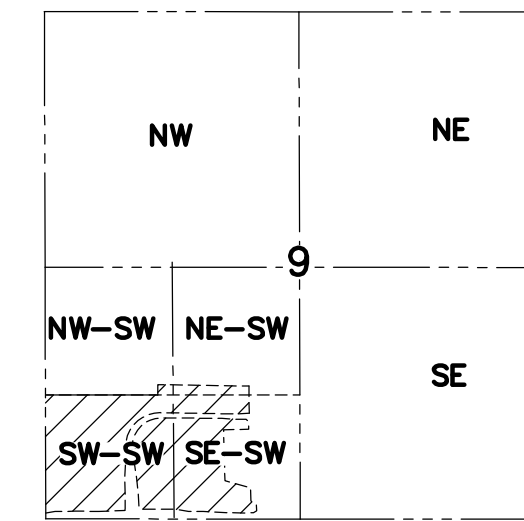
LEGEND

- Sanitary Sewer
- Watermain
- Storm Sewer

File: \\020\Projects\2025\251116\02_Plan\01_Graphics and Exhibits\01_Site Plan\Utility Plan\Titled - Utility Plan - 12.10.2025 - 3:58pm.rvt
 User: Nabor Pineda
 Date: 12.10.2025 3:58pm
 Project: Fitchburg Quarry Development
 Title: Utility Plan

PRELIMINARY PLAT OF JAMESTOWN QUARRY

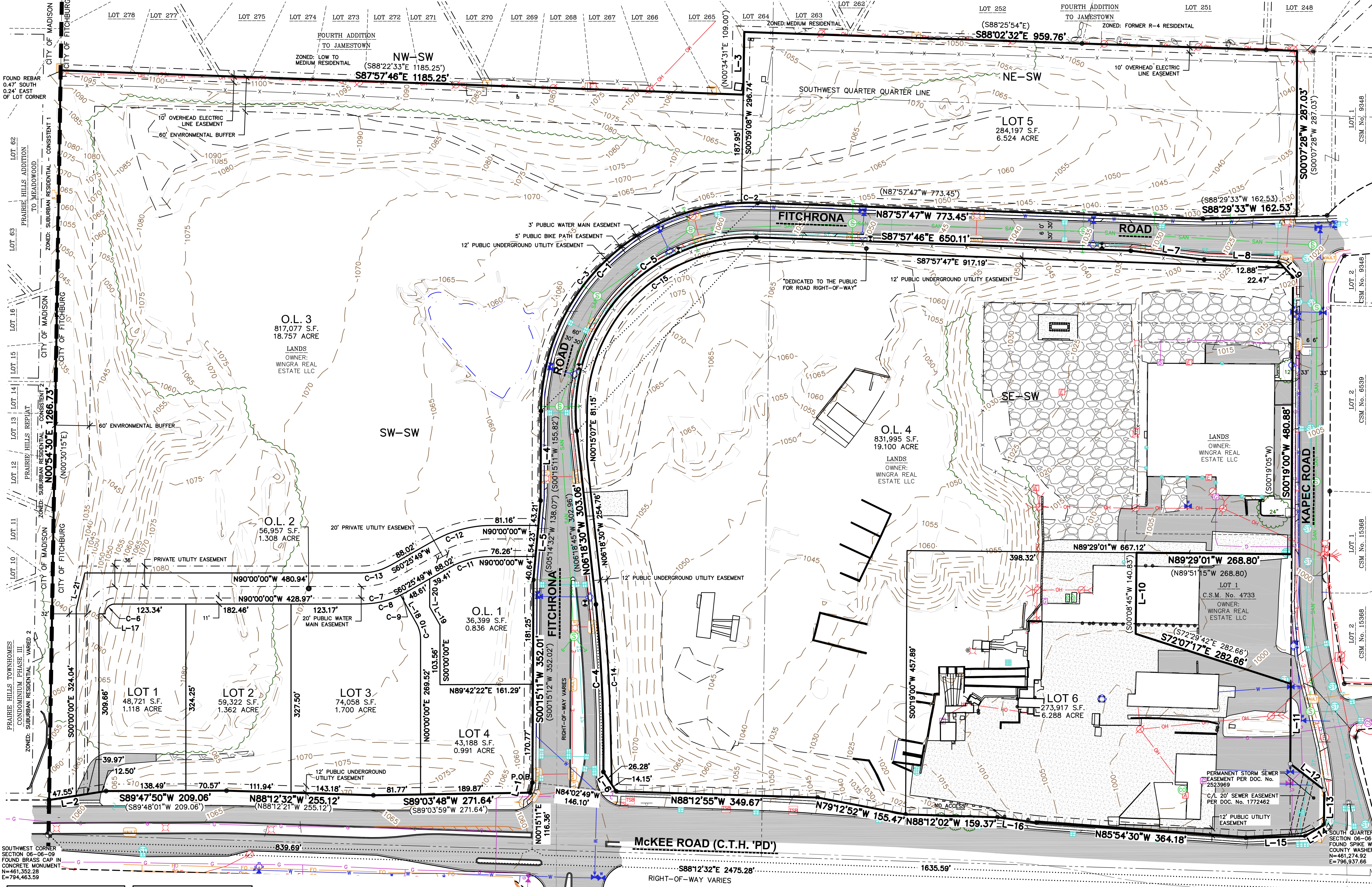
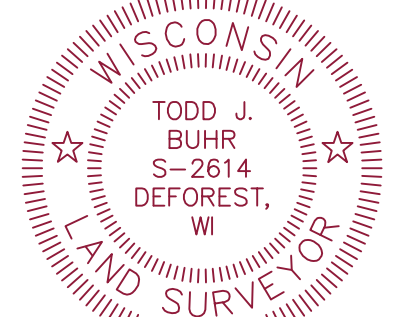
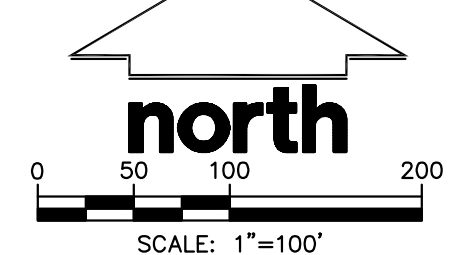
PART OF THE SOUTHWEST QUARTER OF SECTION 06, TOWNSHIP 06 NORTH, RANGE 09 EAST, CITY OF FITCHBURG, DANE COUNTY, WISCONSIN.



LOCATION MAP
NOT TO SCALE

LOT SUMMARY TABLE				
LOT	TYPE	ACREAGE	EXISTING ZONING	PROPOSED ZONING
LOT 1	COMMERCIAL	1.118	R-D	PDD-GP
LOT 2	COMMERCIAL	1.362	R-D	PDD-GP
LOT 3	COMMERCIAL	1.700	R-D	PDD-GP
LOT 4	COMMERCIAL	0.991	R-D	PDD-GP
LOT 5	MULTI FAMILY	6.524	R-D	PDD-GP
LOT 6	COMMERCIAL	6.289	R-D	R-D
OUTLOT 1	STORMWATER	0.836	R-D	PDD-GP
OUTLOT 2	PRIVATE DRIVE	1.308	R-D	PDD-GP
OUTLOT 3	FUTURE DEVELOPMENT	18.757	R-D	PDD-GP
OUTLOT 4	COMMERCIAL	19.100	R-D	R-D

- LEGEND**
- GOVERNMENT CORNER
 - 1" IRON PIPE FOUND
 - 3/4" REBAR FOUND
 - 3/4" x 24" REBAR SET (1.50 LBS/LF)
 - BENCHMARK
 - SIGN
 - SANITARY MANHOLE
 - HYDRANT
 - WATER VALVE
 - STORM MANHOLE
 - CURB INLET
 - LIGHT POLE
 - POWER POLE W/GUY
 - VAULT
 - TELEPHONE PEDESTAL
 - PARCEL BOUNDARY
 - SECTION LINE
 - RIGHT-OF-WAY LINE
 - CENTERLINE
 - CHORD LINE
 - PLATTED LOT LINE
 - EASEMENT LINE
 - CORPORATE LIMITS
 - LANDSCAPE LIMITS
 - FENCE LINE
 - EDGE OF WATER
 - CONCRETE CURB & GUTTER
 - EDGE OF GRAVEL
 - SANITARY SEWER
 - WATER LINE
 - STORM SEWER
 - NATURAL GAS
 - UNDERGROUND ELECTRIC
 - EDGE OF WOODS OR BRUSH
 - INDEX CONTOUR
 - INTERMEDIATE CONTOUR
 - BITUMINOUS PAVEMENT
 - RETAINING WALL
 - CONCRETE PAVEMENT
 - GRAVEL
 - END OF FLAGGED UTILITIES
 - DENOTES RECORD DATA DEPICTING THE SAME LINE ON THE GROUND AS RETRAINED BY THIS SURVEY



LINE TABLE			LINE TABLE		
LINE	BEARING	DISTANCE	LINE	BEARING	DISTANCE
L-1	S13°52'48"W	18.09'	L-12	S52°17'46"E	74.26'
L-2	S81°10'07"W	100.03'	L-13	S00°17'26"W	60.56'
L-3	N00°59'08"E	108.79'	L-14	S59°24'24"W	37.72'
L-4	S00°15'07"W	155.82'	L-15	S88°22'50"W	102.87'
L-5	S05°14'28"W	138.07'	L-16	N82°12'26"W	68.85'
L-6	N33°18'12"W	40.42'	L-17	N90°00'00"W	10.50'
L-7	S83°04'49"E	128.45'	L-18	N29°34'11"W	55.65'
L-8	S87°57'57"E	129.82'	L-19	S29°34'11"E	36.00'
L-9	S43°12'06"E	35.35'	L-20	S00°00'00"E	49.03'
L-10	S00°35'46"W	140.83'	L-21	S13°27'54"W	64.53'
L-11	S00°19'00"W	138.94'			

CURVE TABLE					
CURVE	LENGTH	RADIUS	DELTA	CHORD BEARING	CHORD
C-1	581.50'	363.00'	91°47'03"	S46°08'43"W	521.29'
C-2	28.25'	363.00'	4°27'34"	S89°48'28"W	28.25'
C-3	553.25'	363.00'	87°19'29"	S43°54'56"W	501.24'
C-4	291.15'	2530.00'	6°35'37"	N02°35'14"W	290.99'
C-5	520.04'	303.00'	98°20'14"	N42°52'32"E	458.52'
C-6	26.70'	17.00'	90°00'00"	S45°00'00"W	24.04'
C-7	78.76'	152.60'	29°34'11"	S75°12'54"W	77.88'
C-8	69.16'	152.60'	25°58'04"	S77°00'58"W	68.57'

CURVE TABLE					
CURVE	LENGTH	RADIUS	DELTA	CHORD BEARING	CHORD
C-9	9.59'	152.60'	3°36'08"	S62°13'52"W	9.59'
C-10	29.42'	57.00'	29°34'11"	N14°47'06"W	29.09'
C-11	76.37'	147.40'	29°41'06"	S75°16'22"W	75.52'
C-12	104.29'	201.40'	29°40'06"	S75°15'52"W	103.13'
C-13	50.89'	98.60'	29°34'11"	S75°12'54"W	50.32'
C-14	206.23'	2542.15'	4°38'53"	N03°33'41"W	206.17'
C-15	453.35'	283.00'	91°47'02"	N46°08'44"E	406.40'

NOTES

- FIELD WORK PERFORMED ON JUNE 21-24, AND JULY 06, 2022 AND SEPTEMBER 15, 2023 AND MAY 16-17 AND JUNE 5-7, 2024.
- BEARINGS FOR THIS SURVEY AND MAP ARE REFERENCED TO THE WISCONSIN COUNTY COORDINATE SYSTEM, DANE COUNTY. THE SOUTH LINE OF THE SOUTHWEST QUARTER OF SECTION 06-06-09, RECORDED AS S8812'32"E.
- ELEVATIONS ARE BASED ON THE NORTH AMERICAN VERTICAL DATUM OF 1988 (NAVD88). BENCHMARK IS A BRASS CAP IN CONCRETE MONUMENT MARKING THE SOUTHWEST CORNER OF SECTION 06, T06N, R09E, ELEVATION = 1058.3'.
- CONTOUR INTERVAL IS ONE FOOT.
- SUBSURFACE UTILITIES AND FEATURES SHOWN ON THIS MAP HAVE BEEN APPROXIMATED BY LOCATING SURFICIAL FEATURES AND APPURTENANCES, LOCATING DIGGERS HOTLINE FIELD MARKINGS AND BY REFERENCE TO UTILITY RECORDS AND MAPS. DIGGER'S HOTLINE TICKET No. 20222426576, WITH A CLEAR DATE OF JUNE 15, 2022.
- UTILITY COMPANIES CONTACTED THRU DIGGERS HOTLINE: CITY OF FITCHBURG, AT&T DISTRIBUTION, MGE (ELECTRIC AND GAS), CHARTER COMMUNICATIONS, WISCONSIN DOT-ITS EQUIPMENT ALLIANT ENERGY (ELECTRIC AND GAS), CITY OF MADISON ENGINEERING, MCI.
- "COUNTY TRUNK HIGHWAY "PD" IS A CONTROLLED ACCESS HIGHWAY PURSUANT TO CHAPTER 79, DANE COUNTY CODE OF ORDINANCES".
- THE FINAL GRADE OF UTILITY EASEMENTS SHALL NOT BE ALTERED BY MORE THAN SIX INCHES (6") WITHOUT WRITTEN CONSENT OF THE UTILITIES INVOLVED.
- CONTOURS ON SHEET 1 ARE SHOWN AT 5 FOOT INTERVALS, SHEETS 2 THROUGH 4 ARE SHOWN AT 1 FOOT INTERVAL.

SURVEYED FOR:
COLBURN HUNDLEY, INC.
80 OTTAWA AVENUE, NW STE 410
GRAND RAPIDS, MI 49503
(616) 742-5200

SURVEYED BY:
JSD PROFESSIONAL SERVICES, INC.
507 WEST VERONA AVENUE, SUITE 500
VERONA, WISCONSIN 53593
(608) 848-5060

PROJECT LOCATION:
SECTION 06, TOWNSHIP 06 NORTH, RANGE 09 EAST, CITY OF FITCHBURG, DANE COUNTY, WISCONSIN.

JSD CREATE THE VISION TELL THE STORY
jsdinc.com

PRELIMINARY PLAT OF JAMESTOWN QUARRY

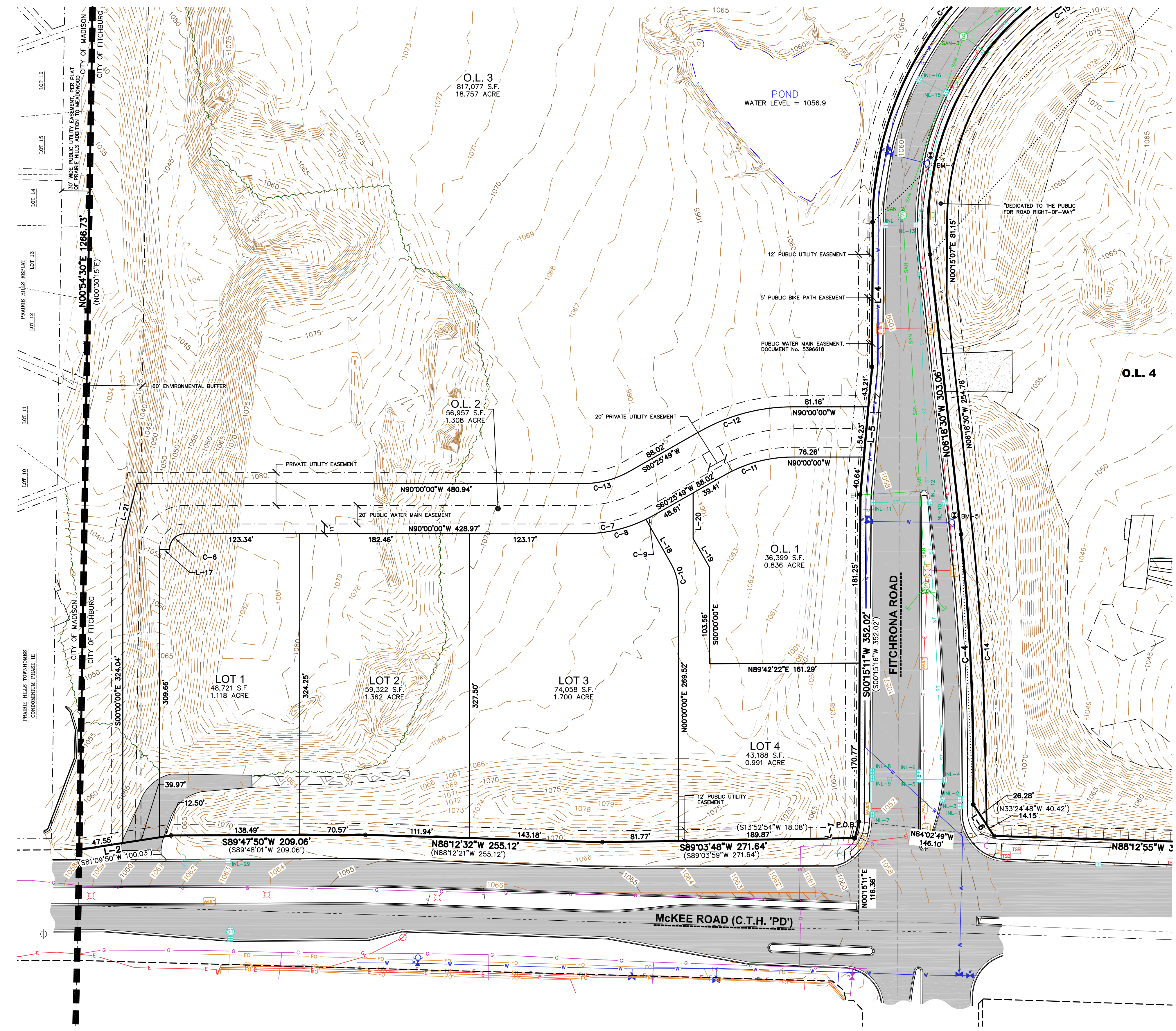
PROJECT NO: 22-11836 DRAWN BY: CMD INITIAL SUBMITTAL DATE: 04-23-2024 (CDP SUBMITTAL)
FIELDBOOK/PG: SURVEYED BY: CMD REVISION RESUBMITTAL DATE: 05-09-24 (CDP)

SHEET 1 OF 4

DRAFT

PRELIMINARY PLAT OF JAMESTOWN QUARRY

PART OF THE SOUTHWEST QUARTER OF SECTION 06, TOWNSHIP 06 NORTH, RANGE 09 EAST, CITY OF FITCHBURG, DANE COUNTY, WISCONSIN.



SURVEYOR'S CERTIFICATE

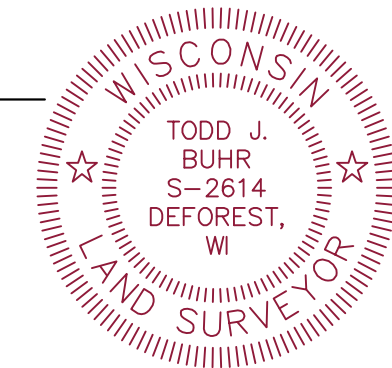
I, TODD BUHR, WISCONSIN PROFESSIONAL LAND SURVEYOR, HEREBY CERTIFY THAT IN FULL COMPLIANCE WITH THE PROVISIONS OF CHAPTER 236 OF THE WISCONSIN STATE STATUTES AND THE LAND DIVISION AND SUBDIVISION REGULATION OF FITCHBURG CODE OF ORDINANCES, AND BY THE DIRECTION OF COLBURN HUNDLEY, INC. I HAVE SURVEYED, DIVIDED AND MAPPED THE PLAT OF JAMESTOWN QUARRY IN THE FITCHBURG, DANE COUNTY, WISCONSIN, AND THAT SUCH PLAT IS A CORRECT REPRESENTATION OF THE EXTERIOR BOUNDARIES OF THE LANDS SURVEYED AND THE DIVISION THEREOF, DESCRIBED AS FOLLOWS:

PART OF THE SOUTHWEST QUARTER OF SECTION 06, TOWNSHIP 06 NORTH, RANGE 09 EAST, IN THE CITY OF FITCHBURG, DANE COUNTY, WISCONSIN, WHICH IS BOUNDED AND DESCRIBED AS FOLLOWS:

COMMENCING AT THE SOUTHWEST CORNER OF SAID SOUTHWEST QUARTER; THENCE S88°12'32"E ALONG THE SOUTH LINE OF SAID SOUTHWEST QUARTER A DISTANCE OF 639.69 FEET TO THE SOUTHERLY EXTENSION OF THE WEST RIGHT-OF-WAY LINE OF FITCHRONA ROAD; THENCE N00°15'11"E ALONG SAID LINE, 116.36 FEET TO THE POINT OF BEGINNING OF LANDS DESCRIBED HEREINAFTER; THENCE S13°52'48"W ALONG THE NORTH LINE OF MCKEE ROAD (C.T.H. 'PD'), 18.09 FEET; THENCE S89°03'48"W ALONG SAID NORTH LINE, 271.64 FEET; THENCE N88°12'32"E ALONG SAID NORTH LINE, 255.12 FEET; THENCE S89°47'50"W ALONG SAID NORTH LINE, 209.06 FEET; THENCE S81°10'07"W ALONG SAID NORTH LINE, 100.03 FEET TO THE WEST LINE OF THE SOUTHWEST QUARTER OF SECTION 06, AFORESAID; THENCE N00°54'30"E ALONG SAID WEST LINE, 1266.73 FEET TO A POINT IN THE SOUTH LINE OF FOURTH ADDITION TO JAMESTOWN; THENCE S87°57'46"E ALONG SAID SOUTH LINE, 1185.25 FEET; THENCE N00°59'08"E ALONG SAID SOUTH LINE, 108.79 FEET; THENCE S88°02'32"E ALONG SAID SOUTH LINE, 959.76 FEET; THENCE S00°07'28"W, 287.03 FEET TO A POINT ON THE NORTH LINE OF FITCHRONA ROAD; THENCE S88°29'33"W ALONG SAID NORTH LINE, 162.53 FEET; THENCE N87°57'47"W ALONG SAID NORTH LINE, 773.45 FEET TO A POINT OF CURVE; THENCE SOUTHWESTERLY, 581.50 FEET ALONG SAID NORTH LINE AND ARC OF A CURVE TO THE LEFT, HAVING A RADIUS OF 363.00 FEET, THE CHORD BEARS S46°08'43"W, 521.29 FEET; THENCE S00°15'07"W ALONG SAID NORTH LINE, 155.82 FEET; THENCE S05°14'28"W ALONG SAID NORTH LINE, 138.07 FEET; THENCE S00°15'11"W ALONG SAID NORTH LINE, 352.02 FEET; THENCE S84°02'49"E, 146.10 FEET TO THE NORTH LINE OF MCKEE ROAD (C.T.H. 'PD'); THENCE N33°18'12"W ALONG SAID LINE, 40.42 FEET TO THE CURVING EASTERLY RIGHT-OF-WAY LINE OF FITCHRONA ROAD; THENCE NORTHWESTERLY ALONG SAID LINE 291.15 FEET ALONG AN ARC OF A CURVE TO THE LEFT, HAVING A RADIUS OF 2530.00 FEET, THE CHORD BEARS N02°35'14"W, 290.99 FEET; THENCE N06°18'30"W ALONG SAID LINE, 303.06 FEET TO A POINT OF CURVE; THENCE NORTHEASTERLY 520.04 FEET ALONG SAID LINE AND ARC OF A CURVE TO THE RIGHT, HAVING A RADIUS OF 303.00 FEET, THE CHORD BEARS N42°52'32"E, 458.52 FEET; THENCE S87°57'46"E ALONG SAID LINE, 650.11 FEET; THENCE S83°04'49"E ALONG SAID LINE, 128.45 FEET; THENCE S87°57'57"E ALONG SAID LINE, 129.82 FEET TO THE WEST RIGHT-OF-WAY LINE OF KAPEC ROAD; THENCE S43°12'06"E ALONG SAID LINE, 35.35 FEET; THENCE S00°15'00"W ALONG SAID LINE, 480.88 FEET TO THE NORTHEAST CORNER OF LOT 1, CSM No. 4733; THENCE N89°29'01"W ALONG THE NORTH LINE OF SAID LOT 1, 268.80 FEET TO THE NORTHWEST CORNER OF SAID LOT; THENCE S00°35'46"W ALONG THE WEST LINE OF SAID LOT, 140.83 FEET TO THE SOUTHWEST CORNER OF SAID LOT; THENCE S72°07'17"E ALONG THE SOUTH LINE OF SAID LOT, 282.66 FEET TO THE WEST RIGHT-OF-WAY LINE OF KAPEC ROAD; THENCE S00°15'00"W ALONG SAID LINE, 138.94 FEET; THENCE S52°17'46"E ALONG SAID LINE, 74.26 FEET; THENCE S00°17'26"W ALONG SAID LINE, 60.56 FEET; THENCE S59°24'24"W ALONG SAID LINE, 37.72 FEET TO THE NORTH RIGHT-OF-WAY LINE OF MCKEE ROAD (C.T.H. 'PD'); THENCE S88°22'50"W ALONG SAID LINE, 102.87 FEET; THENCE N85°54'30"W ALONG SAID LINE, 364.18 FEET; THENCE N82°12'26"W ALONG SAID LINE, 68.85 FEET; THENCE N88°12'02"W ALONG SAID LINE, 159.37 FEET; THENCE N79°12'52"W ALONG SAID LINE, 155.47 FEET; THENCE N88°12'55"W ALONG SAID LINE, 349.67 FEET; THENCE N84°02'49"W, 146.10 FEET TO THE POINT OF BEGINNING.

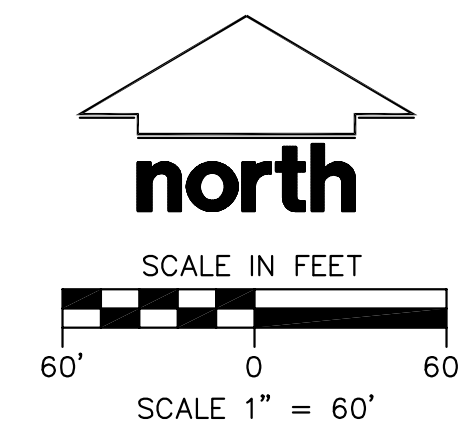
SAID DESCRIBED PARCEL OF LAND CONTAINS 2,559,672 SQUARE FEET OR 58.762 ACRES.

TODD J. BUHR, S-2614 DATE
PROFESSIONAL LAND SURVEYOR



BENCHMARKS		
BENCH MARK	ELEVATION	DESCRIPTION
BM-1	1036.54	BURY BOLT ON HYDRANT EAST OF INLET 22
BM-2	1052.66	BURY BOLT ON HYDRANT WEST OF INLET 20
BM-3	1063.46	BURY BOLT ON HYDRANT NORTHEAST OF INLET 17
BM-4	1062.07	BURY BOLT ON HYDRANT NORTH OF INLET 13
BM-5	1059.28	BURY BOLT ON HYDRANT SOUTH OF INLET 10

*JSD DOES NOT GUARANTEE THAT THE BENCHMARK ELEVATIONS LISTED ON THIS MAP HAVE NOT BEEN DISTURBED SINCE THE DATE OF THIS SURVEY AND SHOULD BE VERIFIED PRIOR TO CONSTRUCTION ACTIVITIES.



PROJECT LOCATION:
SECTION 06, TOWNSHIP 06 NORTH, RANGE 09 EAST, CITY OF FITCHBURG, DANE COUNTY, WISCONSIN.

JSD CREATE THE VISION TELL THE STORY
jsdinc.com

PRELIMINARY PLAT OF JAMESTOWN QUARRY

PROJECT NO: 22-11636	DRAWN BY: CMD	INITIAL SUBMITTAL DATE: 04-23-2024 (CDP SUBMITTAL)
FIELDBOOK/PG: -	SURVEYED BY: CMD	REVISION RESUBMITTAL DATE: 05-09-24 (CDP)
		REVISION RESUBMITTAL DATE: -

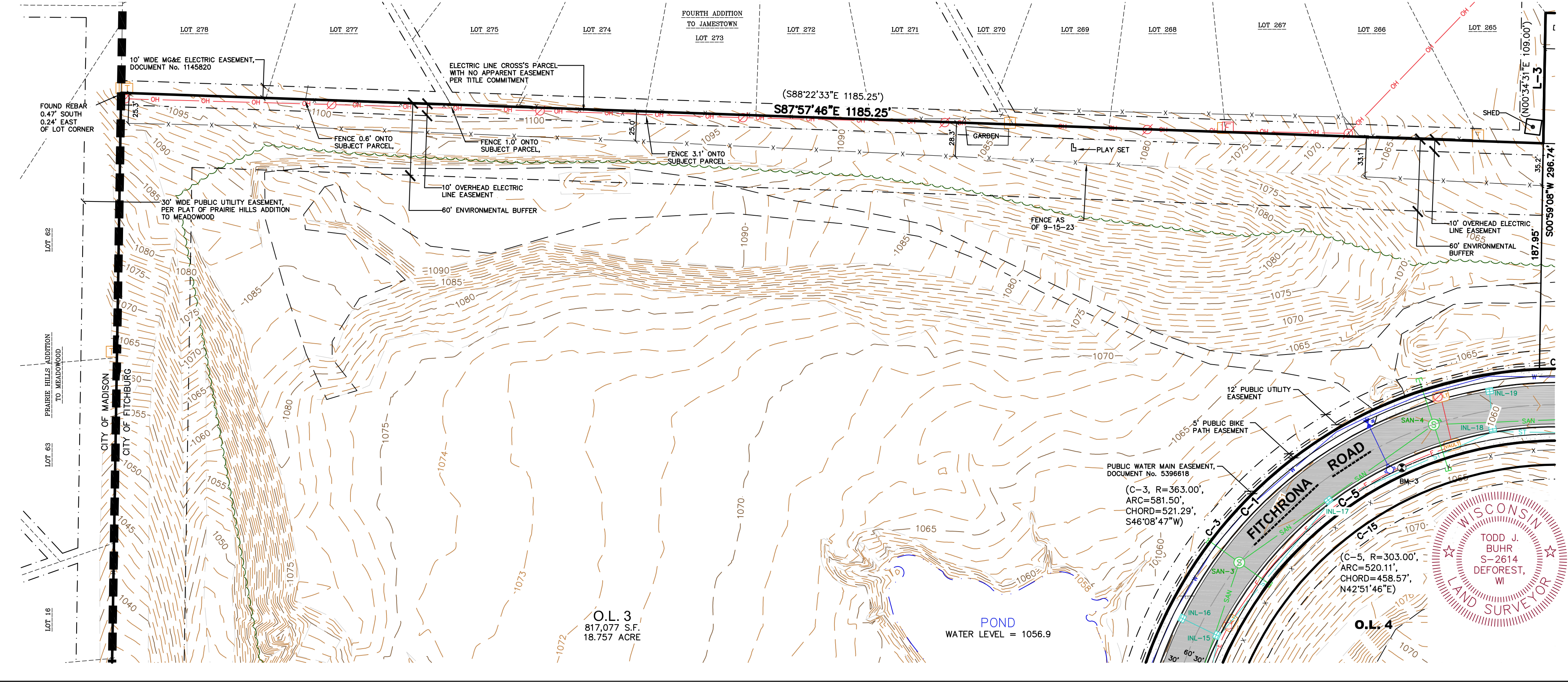
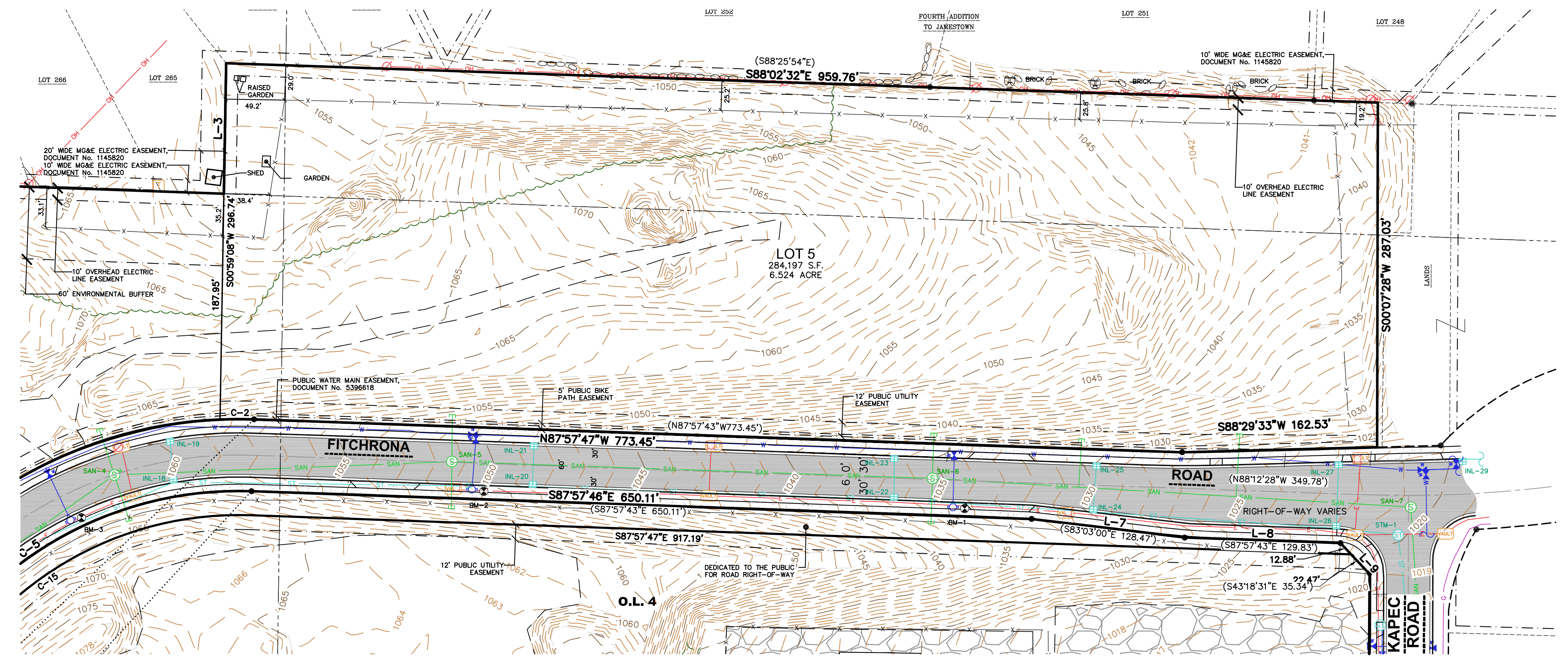
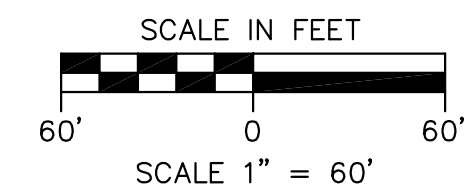
SHEET 2 OF 4

DRAFT

File: \\JSD\GIS\proj\2023\2211636\001\SURVEY_SHEETS\2211636_Prelim_Plat.dwg User: john.krebs PlotDate: Jun 27, 2024 - 3:07pm

PRELIMINARY PLAT OF JAMESTOWN QUARRY

PART OF THE SOUTHWEST QUARTER OF SECTION 06, TOWNSHIP 06 NORTH, RANGE 09 EAST, CITY OF FITCHBURG, DANE COUNTY, WISCONSIN.



STORM SEWER INLETS					
INLET ID	RIM ELEVATION	INVERT ELEVATION	PIPE SIZE	PIPE TYPE	
INL-1	1055.06	N 1051.36	12"	RCP	
INL-2	1055.00	S 1050.90	12"	RCP	
		W 1051.02	12"	RCP	
INL-3	1055.19	E 1050.84	12"	RCP	
		N 1050.79	24"	RCP	
INL-4	1055.29	S 1050.39	24"	RCP	
		W 1050.40	18"	RCP	
		N 1050.24	24"	RCP	
INL-5	1056.88	N 1051.98	12"	RCP	
INL-6	1056.24	S 1051.29	12"	RCP	
INL-7	1056.28	N 1051.29	12"	RCP	
		S 1051.31	12"	RCP	
		E 1051.22	18"	RCP	
INL-8	1056.26	S 1050.86	12"	RCP	
INL-9	1056.19	W 1050.62	18"	RCP	
		N 1050.81	12"	RCP	
		E 1050.58	24"	RCP	
INL-10	1057.08	W 1052.23	12"	RCP	
INL-11	1057.58	E 1053.45	12"	RCP	
INL-12	1057.46	S 1049.46	24"	RCP	
		E 1052.56	12"	RCP	
		W 1052.71	12"	RCP	
		N 1049.41	24"	RCP	
INL-13	1059.23	S 1048.52	24"	RCP	
		W 1055.03	12"	RCP	
		NE 1048.49	24"	RCP	
INL-14	1059.26	W 1055.56	12"	RCP	
INL-15	1060.01	SW 1048.07	24"	RCP	
		NW 1055.85	12"	RCP	
		NE 1048.02	24"	RCP	
INL-16	1060.04	SE 1056.31	12"	RCP	
INL-17	1060.91	SW 1047.71	24"	RCP	
		NE 1047.70	24"	RCP	
INL-18	1059.73	SW 1047.16	24"	RCP	
		N 1055.25	12"	RCP	
		E 1047.14	24"	RCP	
INL-19	1059.60	S 1055.73	12"	RCP	
INL-20	1048.26	W 1041.84	24"	RCP	
		N 1043.51	12"	RCP	
		E 1041.81	24"	RCP	
INL-21	1048.24	S 1044.48	12"	RCP	
INL-22	1036.18	W 1030.53	24"	RCP	
		N 1031.74	12"	RCP	
		E 1030.50	24"	RCP	
INL-23	1036.20	S 1032.65	12"	RCP	
INL-24	1029.46	W 1024.01	24"	RCP	
		N 1024.96	12"	RCP	
		E 1023.96	24"	RCP	
INL-25	1029.40	S 1025.63	12"	RCP	
INL-26	1021.81	W 1016.46	24"	RCP	
		N 1017.39	12"	RCP	
		E 1016.43	24"	RCP	
INL-27	1022.17	S 1018.10	12"	RCP	
INL-28	1019.61	E 1015.06	12"	RCP	
INL-29	1062.56	W 1059.06	12"	RCP	

STORM SEWER MANHOLES					
STRUCT. ID	RIM ELEVATION	INVERT ELEVATION	PIPE SIZE	PIPE TYPE	
STM-1	1020.23	W 1013.95	24"	RCP	
		S 1013.93	27"	RCP	

SANITARY SEWER MANHOLES					
STRUCT. ID	RIM ELEVATION	INVERT ELEVATION	PIPE SIZE	PIPE TYPE	
SAN-1	1057.71	SE 1041.71	8"	PVC	
		SW 1041.66	8"	PVC	
		N 1041.68	8"	PVC	
SAN-2	1059.63	S 1039.74	8"	PVC	
		E 1039.87	8"	PVC	
		W 1039.80	8"	PVC	
		NE 1039.70	8"	PVC	
SAN-3	1060.80	SW 1038.86	8"	PVC	
		E 1038.93	8"	PVC	
		W 1039.00	8"	PVC	
SAN-4	1061.01	NE 1038.84	8"	PVC	
		SW 1038.03	8"	PVC	
		SE 1038.05	8"	PVC	
		NW 1038.03	8"	PVC	
		E 1037.89	8"	PVC	
SAN-5	1051.37	W 1036.67	8"	PVC	
		S 1036.78	8"	PVC	
		N 1036.87	8"	PVC	
SAN-6	1035.34	E 1036.67	10"	PVC	
		W 1023.29	10"	PVC	
		S 1023.32	10"	PVC	
		N 1023.39	10"	PVC	
		E 1023.25	10"	PVC	
SAN-7	1020.58	W 1010.71	10"	PVC	
		N 1010.57	8"	PVC	
		S 1010.57	10"	PVC	

PROJECT LOCATION:
SECTION 06, TOWNSHIP 06
NORTH, RANGE 09 EAST,
CITY OF FITCHBURG, DANE
COUNTY, WISCONSIN.

JSD CREATE THE VISION TELL THE STORY
jsdinc.com

PRELIMINARY PLAT OF JAMESTOWN QUARRY

PROJECT NO: 22-11636 DRAWN BY: CMD INITIAL SUBMITTAL DATE: 04-23-2024 (CDP SUBMITTAL)
FIELDBOOK/PG: SURVEYED BY: CMD REVISION RESUBMITTAL DATE: 05-09-24 (CDP)
REVISION RESUBMITTAL DATE: REVISION RESUBMITTAL DATE:

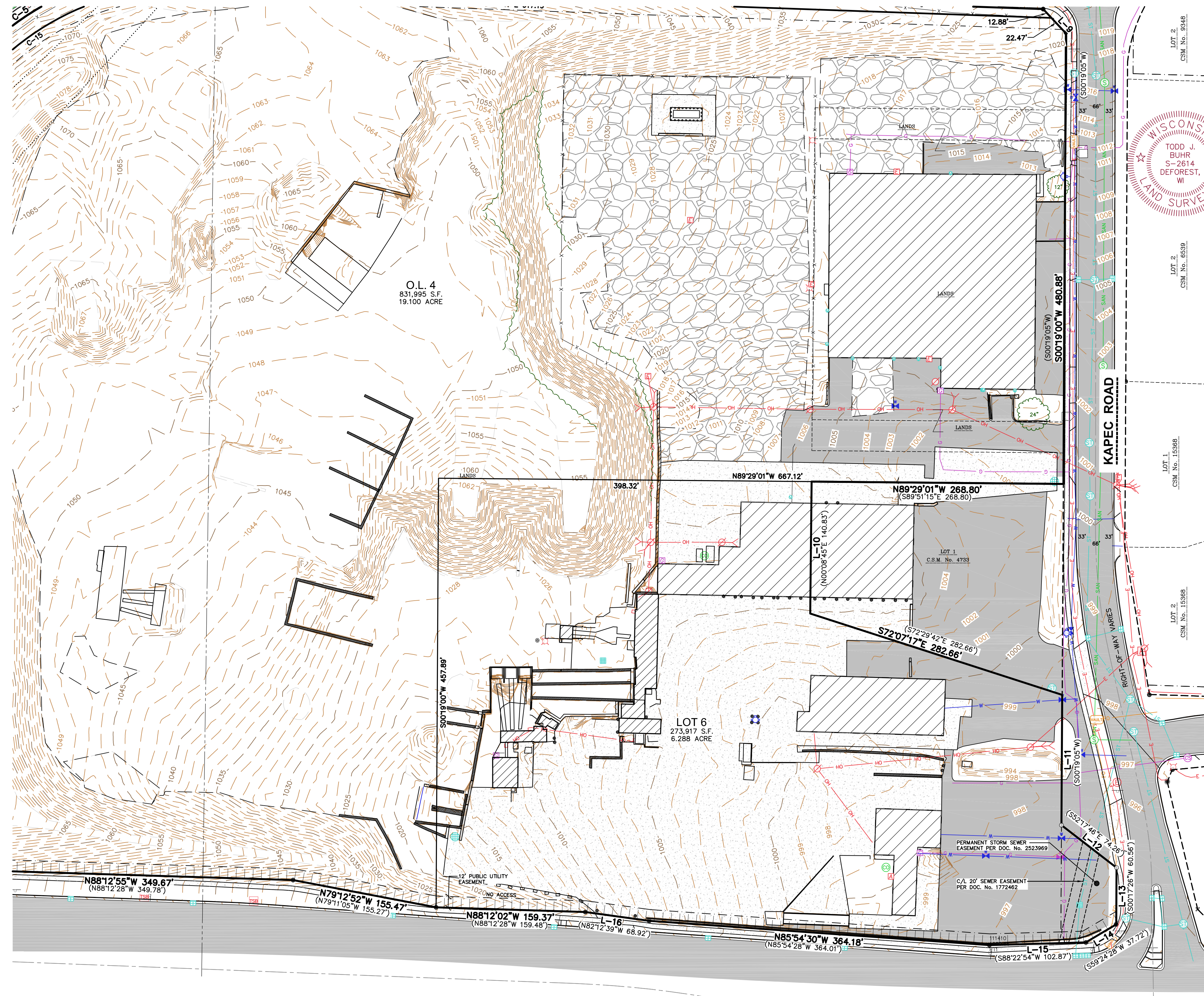
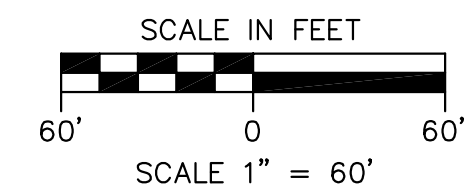
SHEET 3 OF 4

DRAFT

File: \\sdrmc\proj\2023\2211636\Draw\Survey\Sheet3.dwg (Survey_Sheet3) 2/21/2024 10:08:38 AM User: john.krebs PlotDate: Jun 27, 2024 3:08pm

PRELIMINARY PLAT OF JAMESTOWN QUARRY

PART OF THE SOUTHWEST QUARTER OF SECTION 06, TOWNSHIP 06 NORTH, RANGE 09 EAST, CITY OF FITCHBURG, DANE COUNTY, WISCONSIN.



STORM SEWER INLETS					
INLET ID	RIM ELEVATION	INVERT	ELEVATION	PIPE SIZE	PIPE TYPE
INL-1	1055.06	N	1051.36	12"	RCP
INL-2	1055.00	S	1050.90	12"	RCP
		W	1051.02	12"	RCP
INL-3	1055.19	E	1050.84	12"	RCP
		N	1050.79	24"	RCP
INL-4	1055.29	S	1050.39	24"	RCP
		W	1050.40	18"	RCP
		N	1050.24	24"	RCP
INL-5	1056.88	N	1051.98	12"	RCP
INL-6	1056.24	S	1051.29	12"	RCP
INL-7	1056.28	N	1051.29	12"	RCP
		S	1051.31	12"	RCP
		E	1051.22	18"	RCP
INL-8	1056.26	S	1050.86	12"	RCP
INL-9	1056.19	W	1050.62	18"	RCP
		N	1050.81	12"	RCP
		E	1050.58	24"	RCP
INL-10	1057.08	W	1052.23	12"	RCP
INL-11	1057.58	E	1053.45	12"	RCP
INL-12	1057.46	S	1049.46	24"	RCP
		E	1052.56	12"	RCP
		W	1052.71	12"	RCP
		N	1049.41	24"	RCP
INL-13	1059.23	S	1048.52	24"	RCP
		W	1055.03	12"	RCP
		NE	1048.49	24"	RCP
INL-14	1059.26	W	1055.56	12"	RCP
INL-15	1060.01	SW	1048.07	24"	RCP
		NW	1055.85	12"	RCP
		NE	1048.02	24"	RCP
INL-16	1060.04	SE	1056.31	12"	RCP
INL-17	1060.91	SW	1047.71	24"	RCP
		NE	1047.70	24"	RCP
INL-18	1059.73	SW	1047.16	24"	RCP
		N	1055.25	12"	RCP
		E	1047.14	24"	RCP
INL-19	1059.60	S	1055.73	12"	RCP
INL-20	1048.26	W	1041.84	24"	RCP
		N	1043.51	12"	RCP
		E	1041.81	24"	RCP
INL-21	1048.24	S	1044.48	12"	RCP
INL-22	1036.18	W	1030.53	24"	RCP
		N	1031.74	12"	RCP
		E	1030.50	24"	RCP
INL-23	1036.20	S	1032.65	12"	RCP
INL-24	1029.46	W	1024.01	24"	RCP
		N	1024.96	12"	RCP
		E	1023.96	24"	RCP
INL-25	1029.40	S	1025.63	12"	RCP
INL-26	1021.81	W	1016.46	24"	RCP
		N	1017.39	12"	RCP
		E	1016.43	24"	RCP
INL-27	1022.17	S	1018.10	12"	RCP
INL-28	1019.61	E	1015.06	12"	RCP
INL-29	1062.56	W	1059.06	12"	RCP

STORM SEWER MANHOLES					
STRUCT. ID	RIM ELEVATION	INVERT	ELEVATION	PIPE SIZE	PIPE TYPE
STM-1	1020.23	W	1013.95	24"	RCP
		S	1013.93	27"	RCP

SANITARY SEWER MANHOLES					
STRUCT. ID	RIM ELEVATION	INVERT	ELEVATION	PIPE SIZE	PIPE TYPE
SAN-1	1057.71	SE	1041.71	8"	PVC
		SW	1041.66	8"	PVC
		N	1041.68	8"	PVC
SAN-2	1059.63	S	1039.74	8"	PVC
		E	1039.87	8"	PVC
		W	1039.80	8"	PVC
		NE	1039.70	8"	PVC
SAN-3	1060.80	SW	1038.86	8"	PVC
		E	1038.93	8"	PVC
		W	1039.00	8"	PVC
		NE	1038.84	8"	PVC
SAN-4	1061.01	SW	1038.03	8"	PVC
		SE	1038.05	8"	PVC
		NW	1038.03	8"	PVC
		E	1037.89	8"	PVC
SAN-5	1051.37	W	1036.67	8"	PVC
		S	1036.78	8"	PVC
		N	1036.87	8"	PVC
		E	1036.67	10"	PVC
SAN-6	1035.34	W	1023.29	10"	PVC
		S	1023.32	10"	PVC
		N	1023.39	10"	PVC
		E	1023.25	10"	PVC
SAN-7	1020.58	W	1010.71	10"	PVC
		N	1010.57	8"	PVC
		S	1010.57	10"	PVC

PROJECT LOCATION:
SECTION 06, TOWNSHIP 06
NORTH, RANGE 09 EAST,
CITY OF FITCHBURG, DANE
COUNTY, WISCONSIN.

JSD CREATE THE VISION TELL THE STORY
jsdinc.com

PRELIMINARY PLAT OF JAMESTOWN QUARRY

PROJECT NO: 22-11636 DRAWN BY: CMD INITIAL SUBMITTAL DATE: 04-23-2024 (CDP SUBMITTAL)
FIELDBOOK/PAGE: SURVEYED BY: CMD REVISION RESUBMITTAL DATE: 05-09-24 (CDP)
REVISION RESUBMITTAL DATE: REVISION RESUBMITTAL DATE: REVISION RESUBMITTAL DATE:

SHEET 4 OF 4

DRAFT

File: \\sdbinc\proj\2022\2211636\DWG\SURVEY\Sheet 4 User: john.krebs PlotDate: Jun 27, 2024 - 8:39am



Legal Description

Part of the Southwest Quarter of Section 06, Township 06 North, Range 09 East, in the City of Fitchburg, Dane County, Wisconsin, which is bounded and described as follows:

Commencing at the Southwest corner of said Southwest Quarter; thence S88°12'32"E along the South line of said Southwest Quarter a distance of 839.69 feet to the Southerly extension of the West Right-of-Way line of Fitchrona Road; thence N00°15'11"E along said line, 116.36 feet to the Point of Beginning of lands described hereinafter; thence S13°52'48"W along the North line of McKee Road (C.T.H. 'PD'), 18.09 feet; thence S89°03'48"W along said North line, 271.64 feet; thence N88°12'32"W along said North line, 255.12 feet; thence S89°47'50"W along said North line, 209.06 feet; thence S81°10'07"W along said North line, 100.03 feet to the West line of the Southwest Quarter of Section 06, aforesaid; thence N00°54'30"E along said West line, 1266.73 feet to a point in the South line of the Fourth Addition to Jamestown; thence S87°57'46"E along said South line, 1185.25 feet; thence N00°59'08"E along said South line, 108.79 feet; thence S88°02'32"E along said South line, 959.76 feet; thence S00°07'28"W, 287.03 feet to a point on the North line of Fitchrona Road; thence S88°29'33"W along said North line, 162.53 feet; thence N87°57'47"W along said North line, 773.45 feet to a point of curve; thence Southwesterly, 581.50 feet along said North line and arc of a curve to the left, having a radius of 363.00 feet, the chord bears S46°08'43"W, 521.29 feet; thence S00°15'07"W along said North line, 155.82 feet; thence S05°14'28"W along said North line, 138.07 feet; thence S00°15'11"W along said North line, 352.02 feet; thence S84°02'49"E, 146.10 feet to the North line of McKee Road (C.T.H. 'PD'); thence N33°18'12"W along said line, 40.42 feet to the curving Easterly Right-of-Way line of Fitchrona Road; thence Northwesterly along said line 291.15 feet along an arc of a curve to the left, having a radius of 2530.00 feet, the chord bears N02°35'14"W, 290.99 feet; thence N06°18'30"W along said line, 303.06 feet to a point of curve; thence Northeasterly 520.04 feet along said line and arc of a curve to the right, having a radius of 303.00 feet, the chord bears N42°52'32"E, 458.52 feet; thence S87°57'46"E along said line, 650.11 feet; thence S83°04'49"E along said line, 128.45 feet; thence S87°57'57"E along said line, 129.82 feet to the West Right-of-Way line of Kapec Road; thence S43°12'06"E along said line, 35.35 feet; thence S00°19'00"W along said line, 480.88 feet to the Northeast corner of Lot 1, CSM No. 4733; thence N89°29'01"W along the North line of said Lot 1, 268.80 feet to the Northwest corner of said lot; thence S00°35'46"W along the West line of said lot, 140.83 feet to the Southwest corner of said lot; thence S72°07'17"E along the South line of said lot, 282.66 feet to the West Right-of-Way line of Kapec Road; thence S00°19'00"W along said line, 138.94 feet; thence S52°17'46"E along said line, 74.26 feet; thence S00°17'26"W along said line, 60.56 feet; thence S59°24'24"W along said line, 37.72 feet to the North Right-of-Way line of McKee Road (C.T.H. 'PD'); thence S88°22'50"W along said line, 102.87 feet; thence N85°54'30"W along said line, 364.18 feet; thence N82°12'26"W along said line, 68.85 feet; thence N88°12'02"W along said



line, 159.37 feet; thence N79°12'52"W along said line, 155.47 feet; thence N88°12'55"W along said line, 349.67 feet; thence N84°02'49"W, 146.10 feet to the point of beginning.

Said described parcel of land contains 2,559,672 square feet or 58.762 acres.