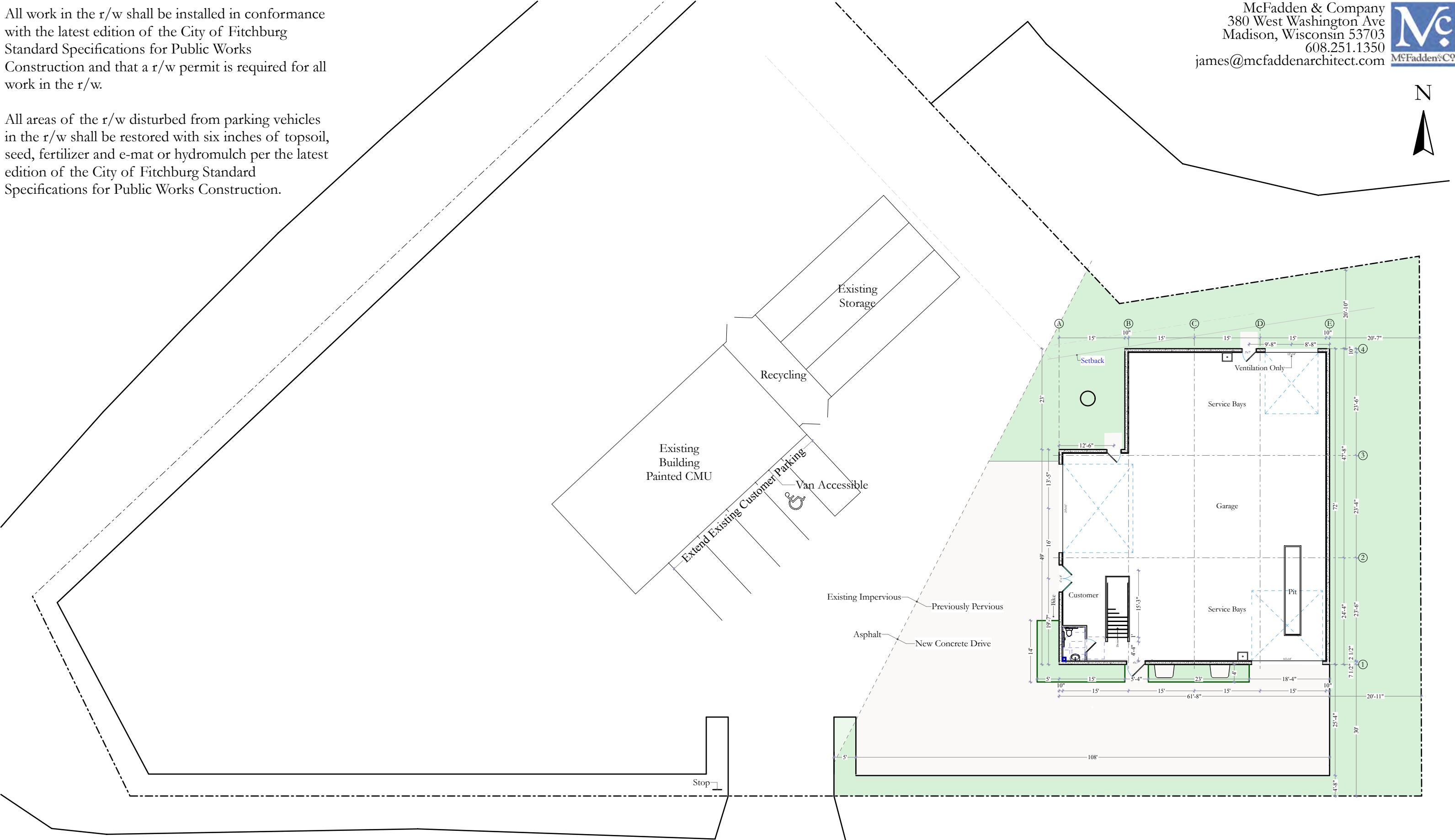




All work in the r/w shall be installed in conformance with the latest edition of the City of Fitchburg Standard Specifications for Public Works Construction and that a r/w permit is required for all work in the r/w.

All areas of the r/w disturbed from parking vehicles in the r/w shall be restored with six inches of topsoil, seed, fertilizer and e-mat or hydromulch per the latest edition of the City of Fitchburg Standard Specifications for Public Works Construction.



| | |
|-----------------------|------------------|
| Previously Impervious | 12,448 SF |
| Building | 4,096 SF - 32.9% |
| Pavement | 3,906 SF - 31.4% |
| Proposed Pervious | 4,440 SF - 35.7% |
| Proposed Impervious | 7,763 SF - 64.3% |

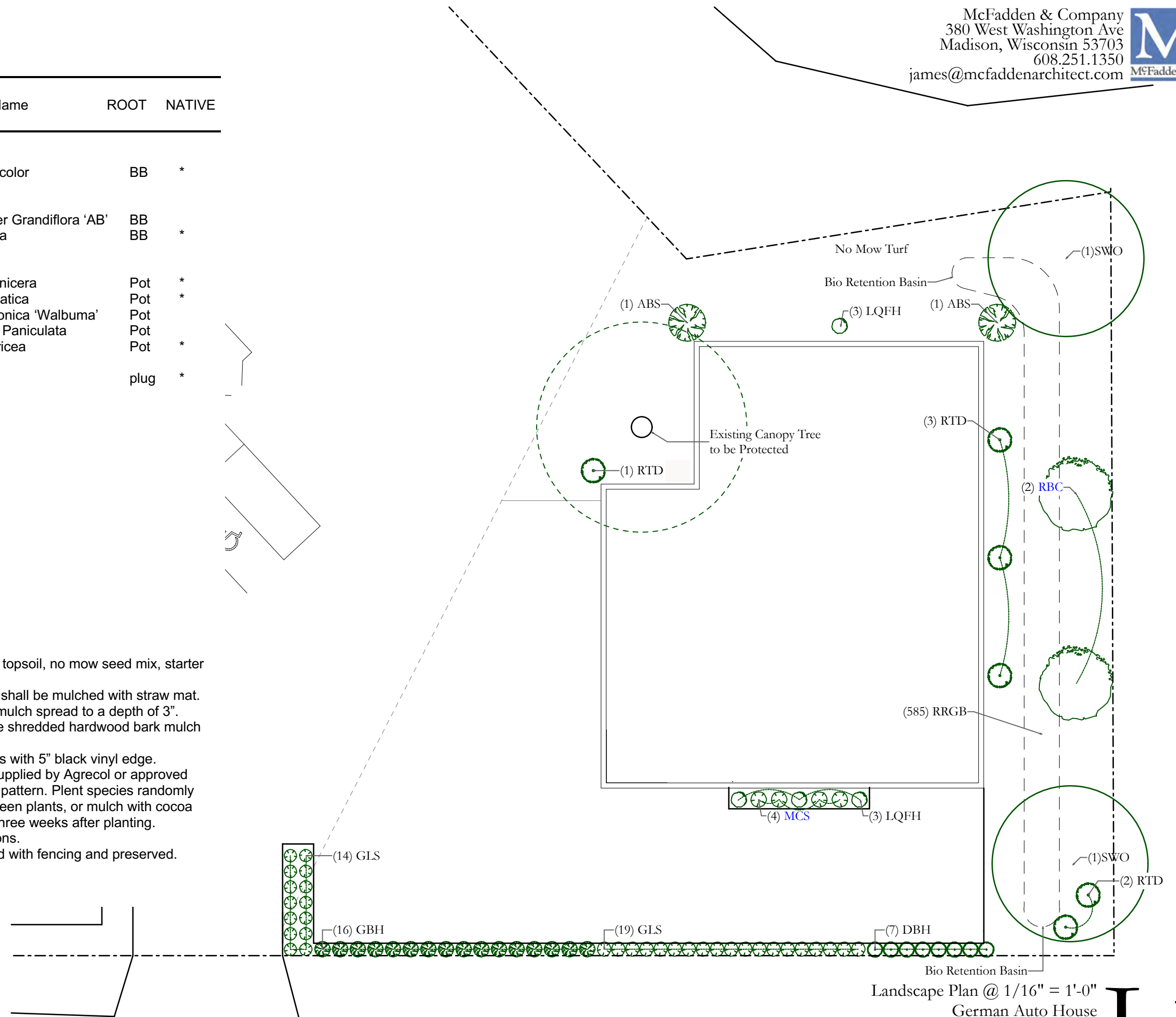
C1

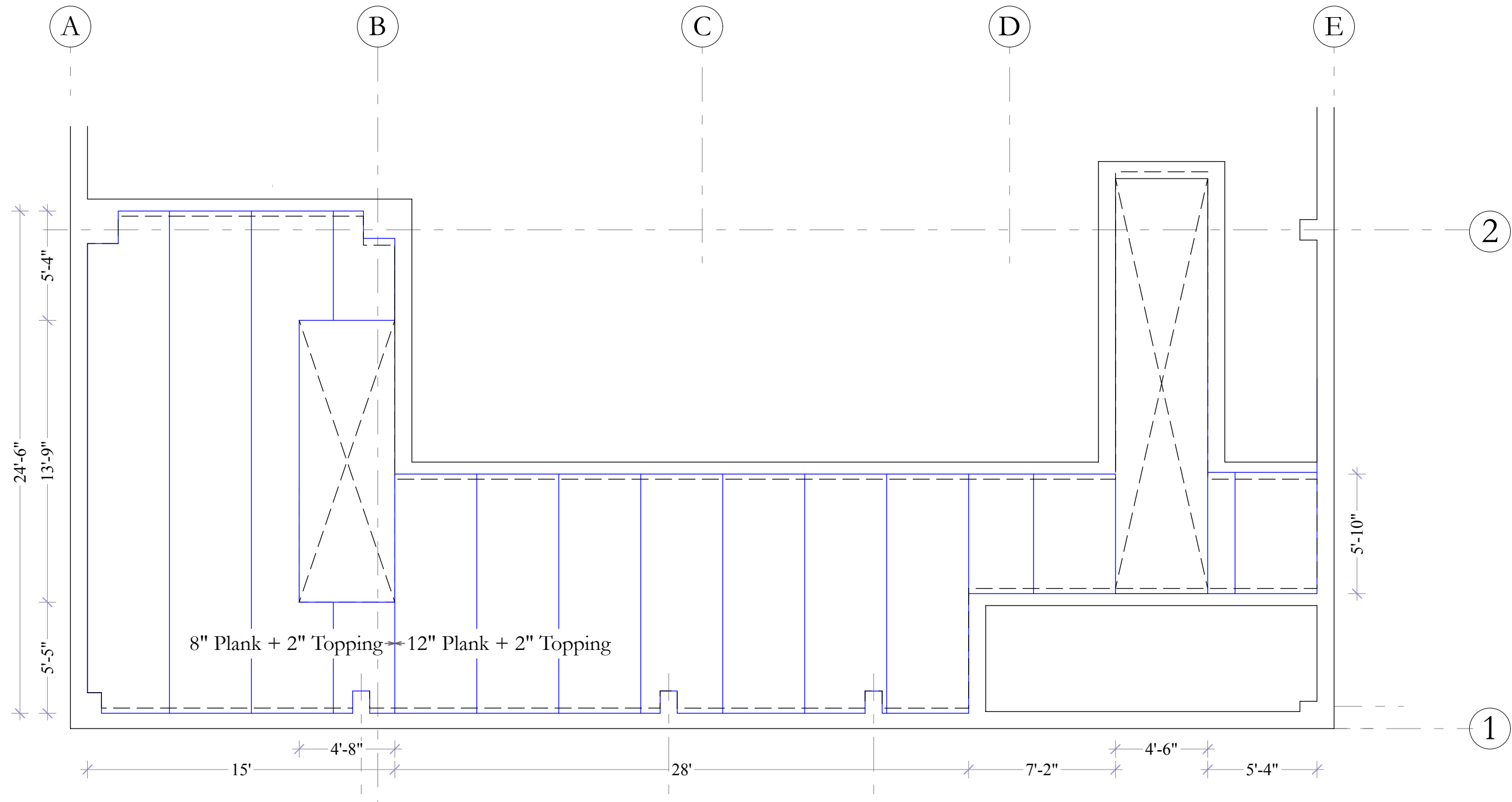
PLANT LIST

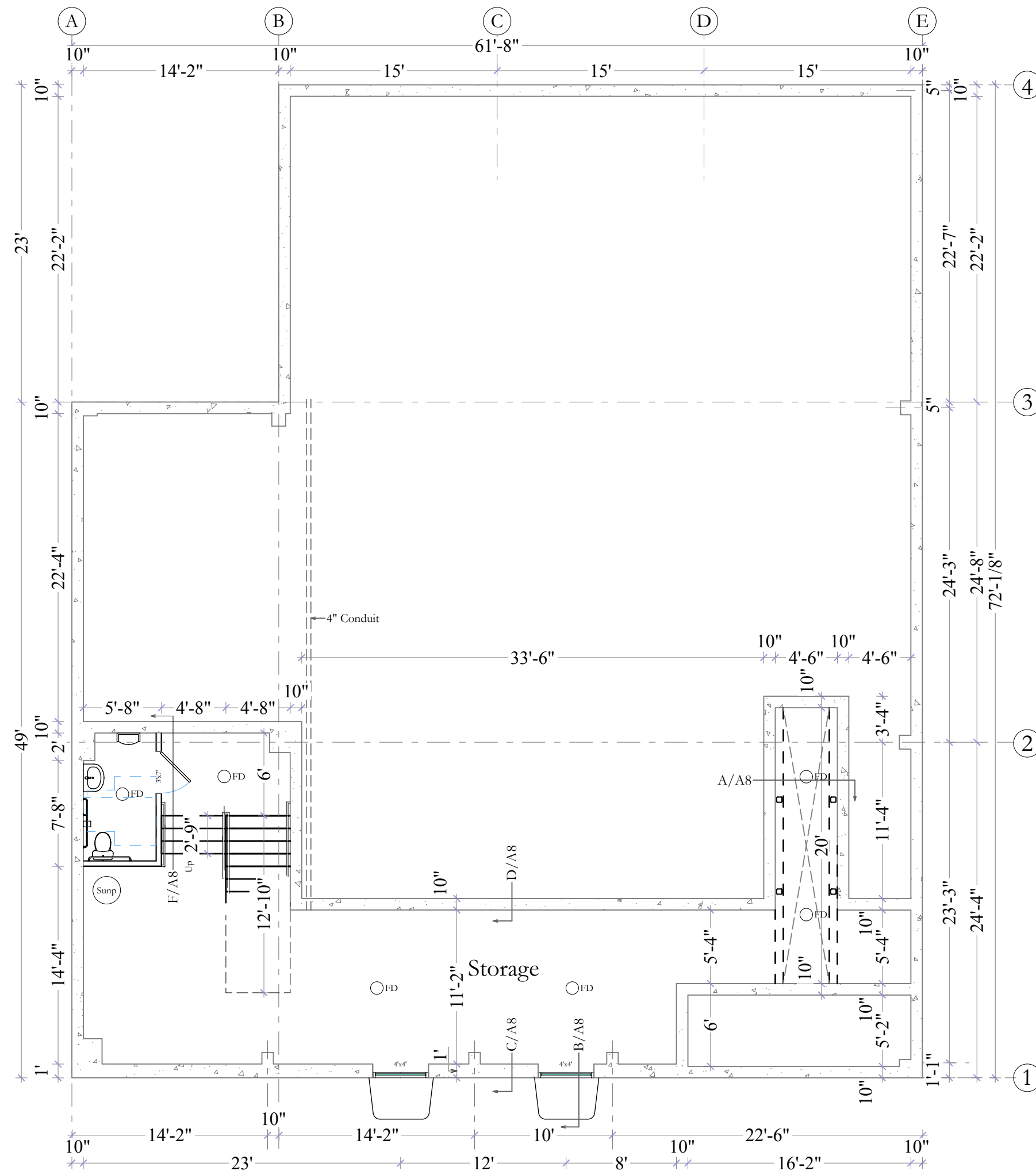
| KEY | QUAN | SIZE | COMMON NAME | Botanical Name | ROOT | NATIVE | |
|-----|-------|------|-------------------------------|------------------------------|--------------------------------|--------|------|
| SWO | (2) | 2" | Canopy Trees | | | | |
| | 2 | | Swamp White Oak | Quercus Bicolor | BB | * | |
| ABS | (5) | 6' | Understory Trees | | | | |
| | 3 | | Autum Brilliance Serviceberry | Amelanchier Grandiflora 'AB' | BB | | |
| | 2 | | River Birch Clump | Betula Nigra | BB | * | |
| DBH | (141) | 24" | Deciduous Shrubs | | | | |
| | 23 | | Dwarf Bush Honeysuckle | Diervilla Lonicera | Pot | * | |
| | 39 | | Gro Low Sumac | Rhus Aromatica | Pot | * | |
| | MCS | | 4 | Magic Carpet Spirea | Spirea Japonica 'Walbuma' | Pot | |
| | LQFH | | 3 | Little Quick Fire Hydrangea | Hydrangea Paniculata | Pot | |
| | RTD | | 6 | Red Twig Dogwood | Cornus Sericea | Pot | * |
| | RGP | | (585) | 2 1/2" | Bio-retention Plantings | | plug |
| | | | Common Blue Star | | | | |
| | | | Bottle Gentine | | | | |
| | | | Obedient Plant | | | | |
| | | | Columbine | | | | |
| | | | Switchgrass | | | | |
| | | | Black Eyed Susan | | | | |
| | | | Wild Iris | | | | |
| | | | Swamp Milkweed | | | | |
| | | | White Turtlehead | | | | |
| | | | Cardinal Flower | | | | |
| | | | Turk's Cap Lily | | | | |
| | | | Little Bluestem | | | | |
| | | | Canada Wild Rye | | | | |
| | | | Nodding Onion | | | | |

NOTES:

- 1) Designated no mow turf areas to receive a minimum of 4" of topsoil, no mow seed mix, starter fertilizer, and straw or straw mat mulch.
- 2) No mow turf areas in swales and on slopes greater than 3:1 shall be mulched with straw mat.
- 3) Planting beds to be mulched with shredded hardwood bark mulch spread to a depth of 3".
- 4) Individual trees and shrub groupings in lawn areas to receive shredded hardwood bark mulch plant rings (4' diameter) spread to a depth of 3".
- 5) Designated planting beds separated from lawn and turf areas with 5" black vinyl edge.
- 6) Bio-retention areas to be planted with 2" x 2" x 5" plugs as supplied by Agrecol or approved equal. Plugs to be installed 12" on center in a triangular grid pattern. Plant species randomly throughout specified areas. Apply bark mulch (2" thick) between plants, or mulch with cocoa mat fabric. Apply 1/2" water daily (in the absence of rain) for three weeks after planting.
- 7) Bio-retention areas to be constructed per WDNR specifications.
- 8) Existing canopy tree adjacent to new building to be protected with fencing and preserved.
- 9) Note: * denotes native plant.

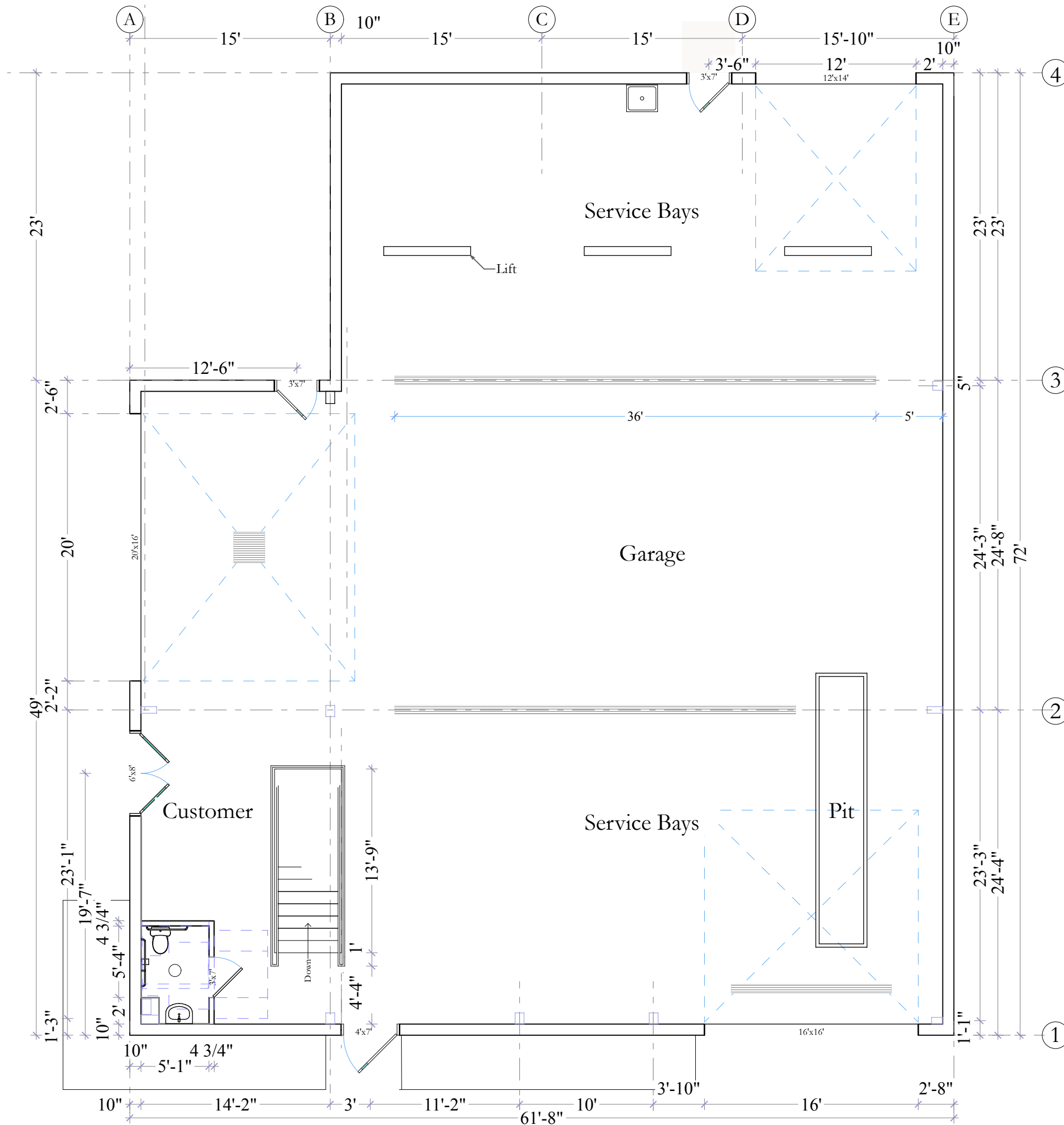






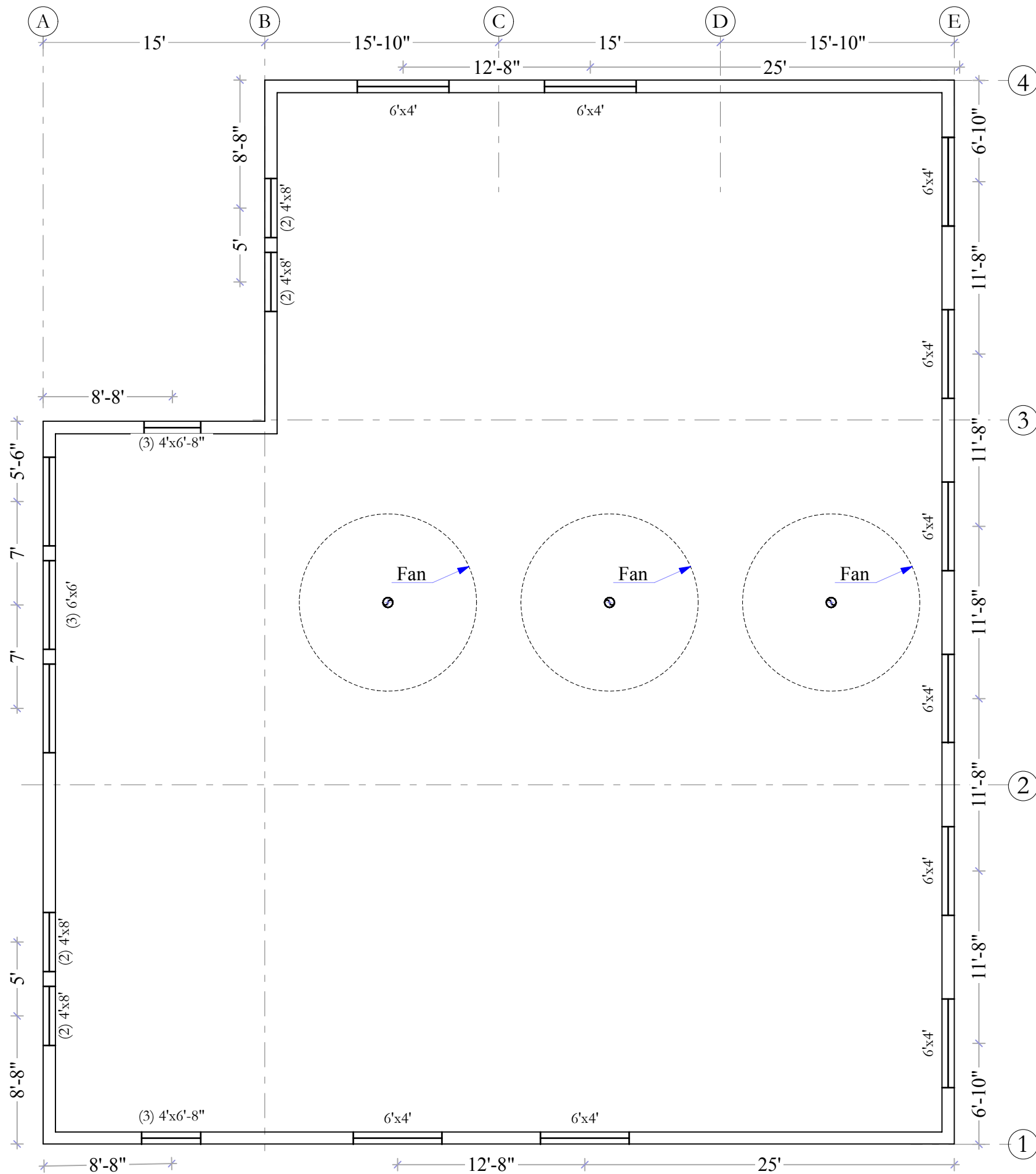
Lower Level Plan @ 1/8" = 1'-0"
 German Auto House
 3000 Rimrock Road, Fitchburg, WI
 September 30, 2025

A1



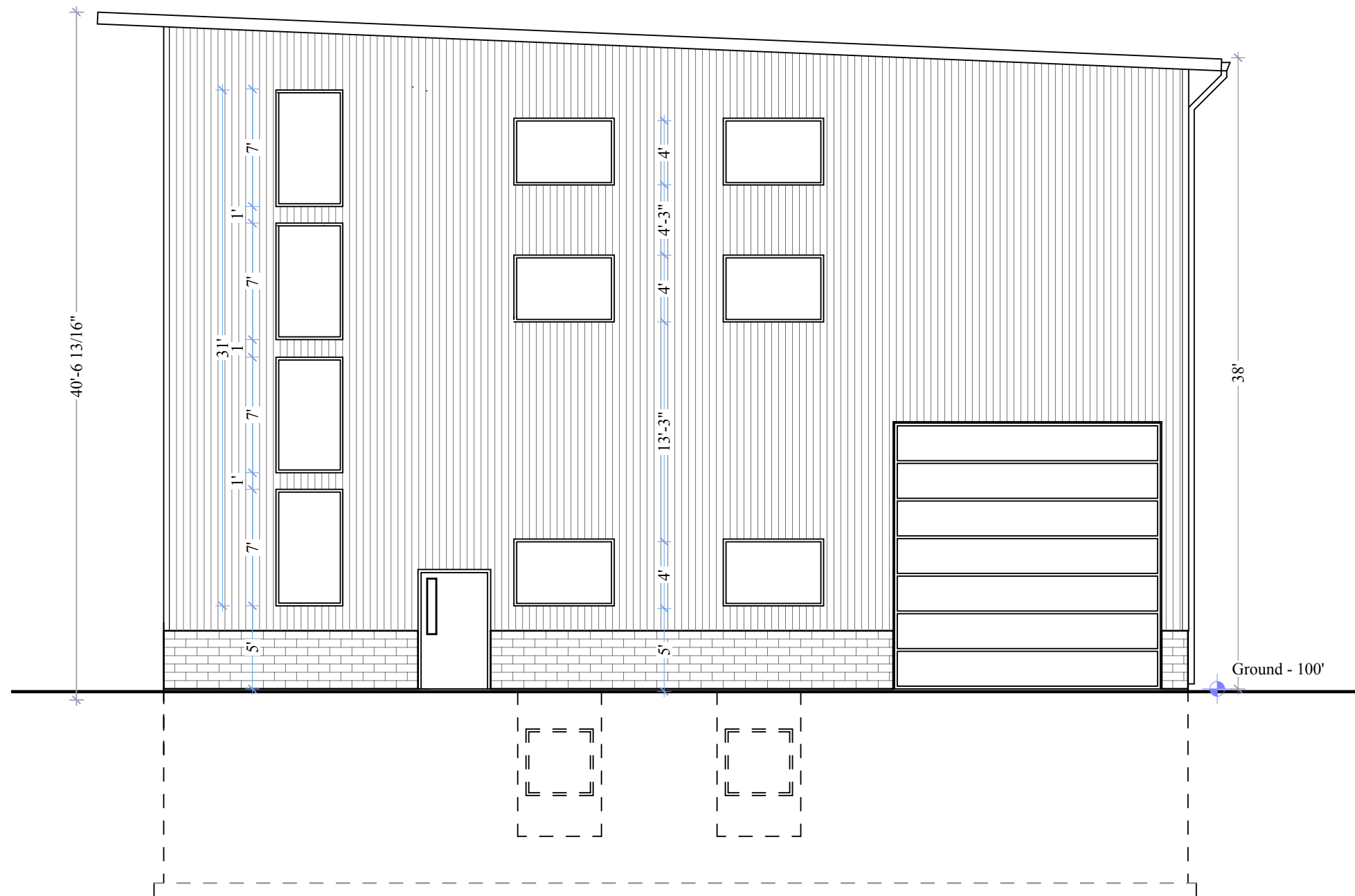
Ground Floor Plan @ 1/8" = 1'-0"
 German Auto House
 3000 Rimrock Road, Fitchburg, WI
 September 30, 2025

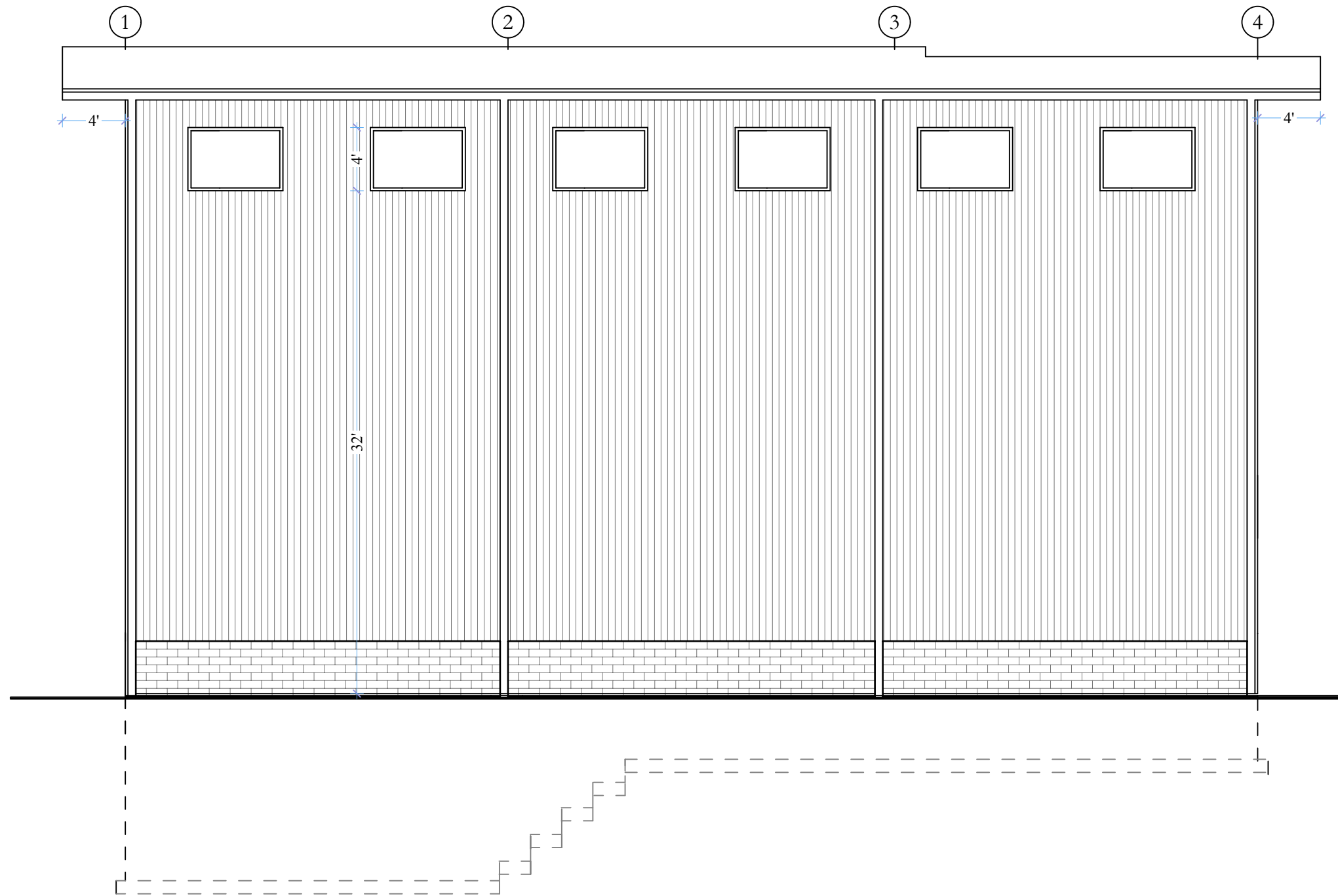
A2

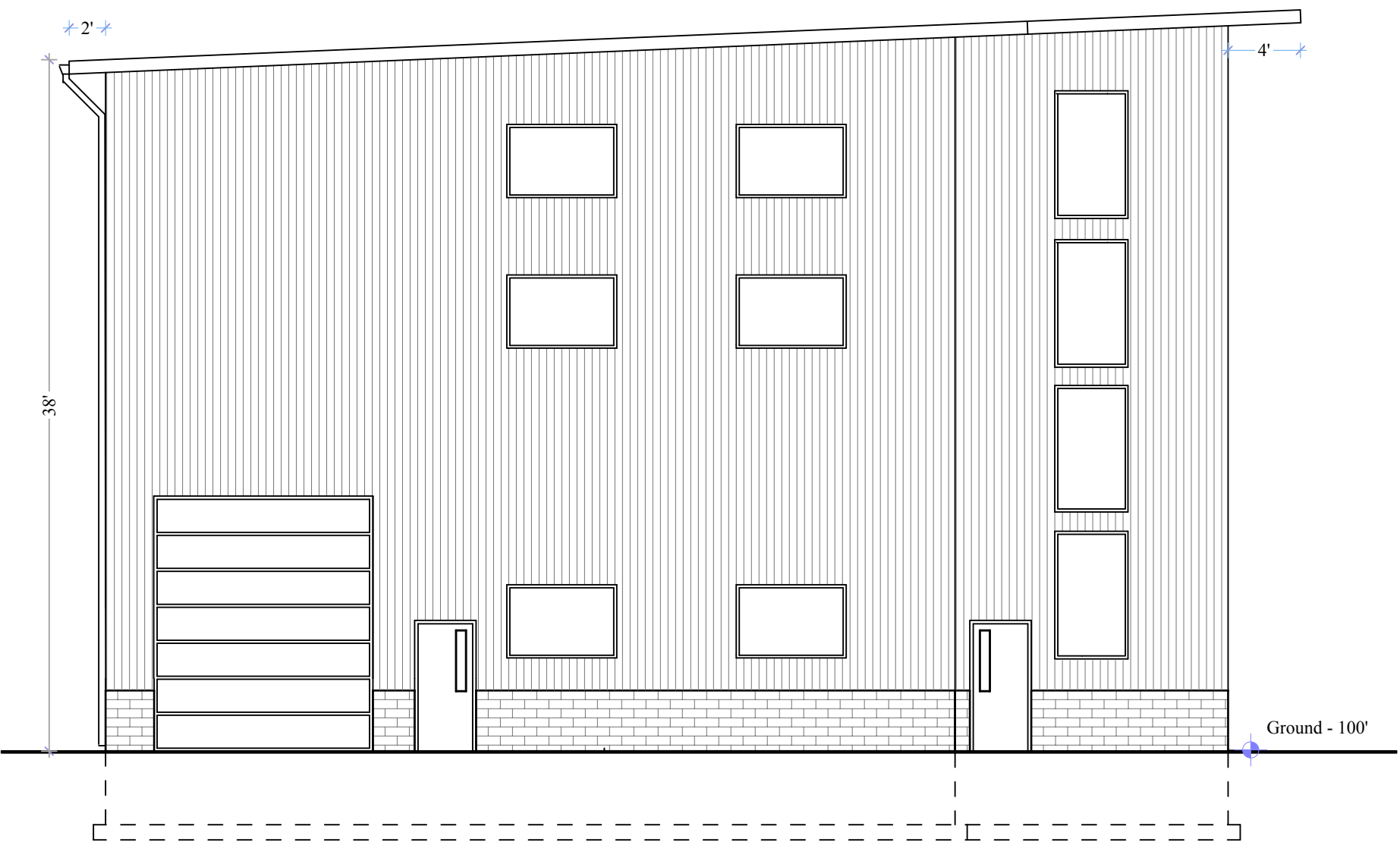




Fenestration:
Total Wall Area - 10,423 SF
Fenestration Area - 1,148 SF or 11%

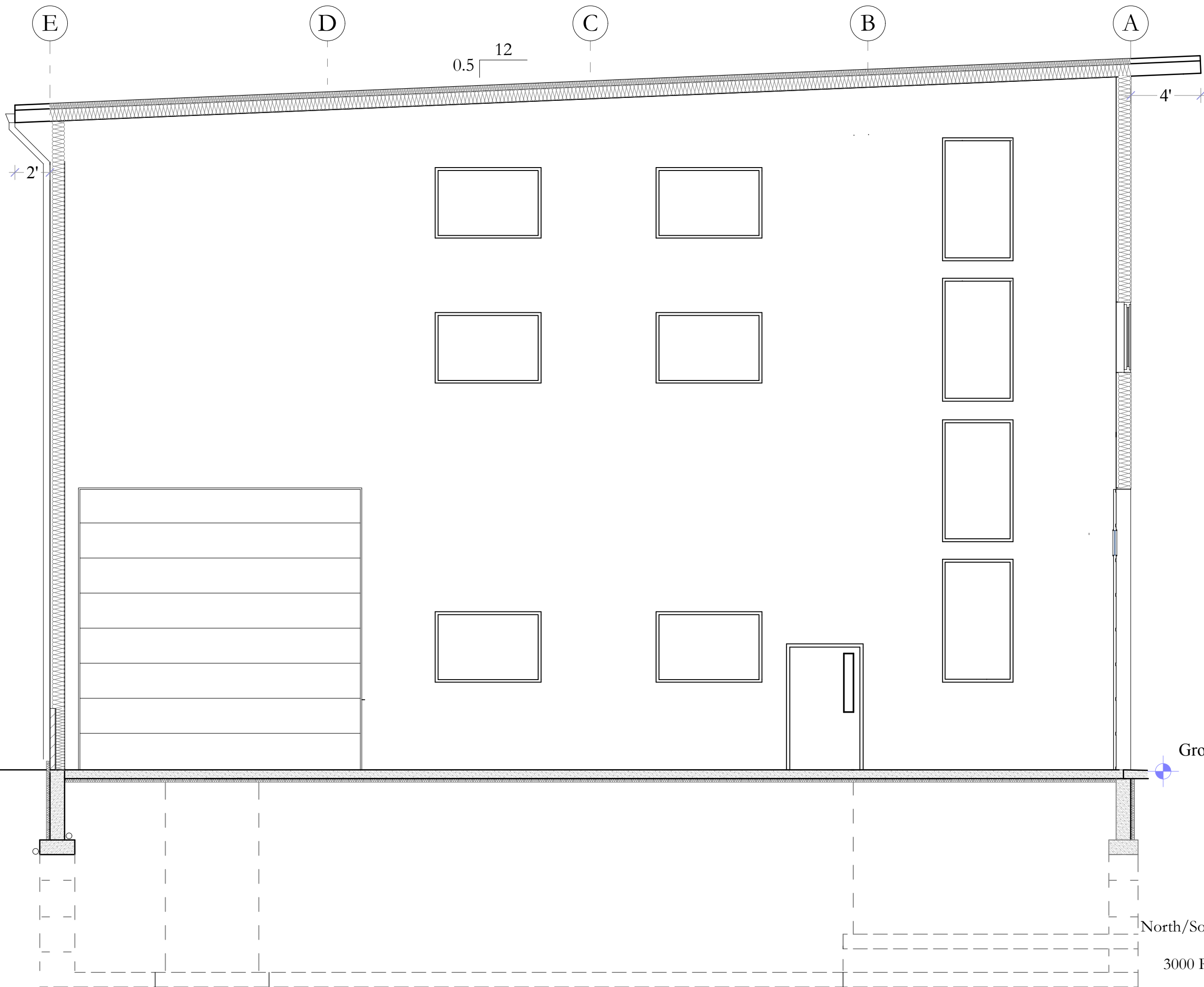






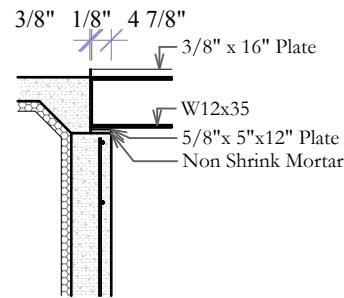
Prescriptive Building Envelope Requirements/Compliance

| Component | Required | Provided |
|---|--------------------|--------------------|
| Roof - Metal building (with R-5 thermal blocks) | U-0.035 | U-0.031 |
| Wall - Metal building | U-0.050 | U-0.033 |
| Floor - Heated Slab | R-15 for 36" below | R-15 for 48" below |
| | R-5 Full Slab | R-5 Full Slab |
| Doors - Swinging | U-0.37 | U-0.08 |
| Doors - Overhead | U-0.31 | U-0.20 |
| Fenestration - Storefront | U-0.36/0.38 SHGC | U-0.36/0.23 SHGC |
| Fenestration - Entry Doors | U-0.77 | U-0.70 |

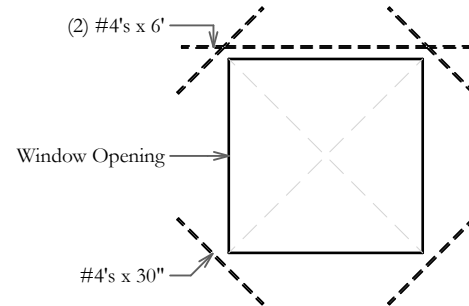


North/South Section @ 3/16" = 1'-0"
German Auto House
3000 Rimrock Road, Fitchburg, WI
September 30, 2025

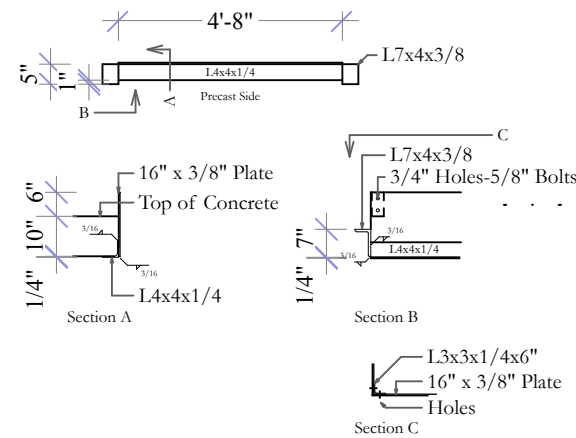
A8



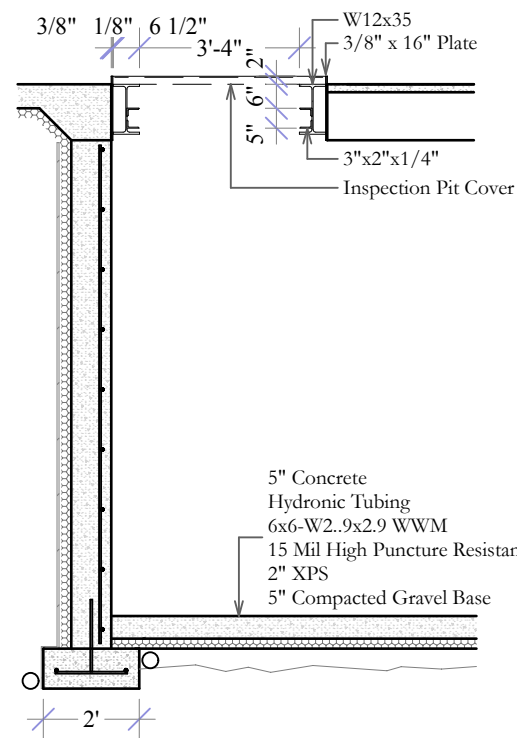
"G"- Pit End Wall



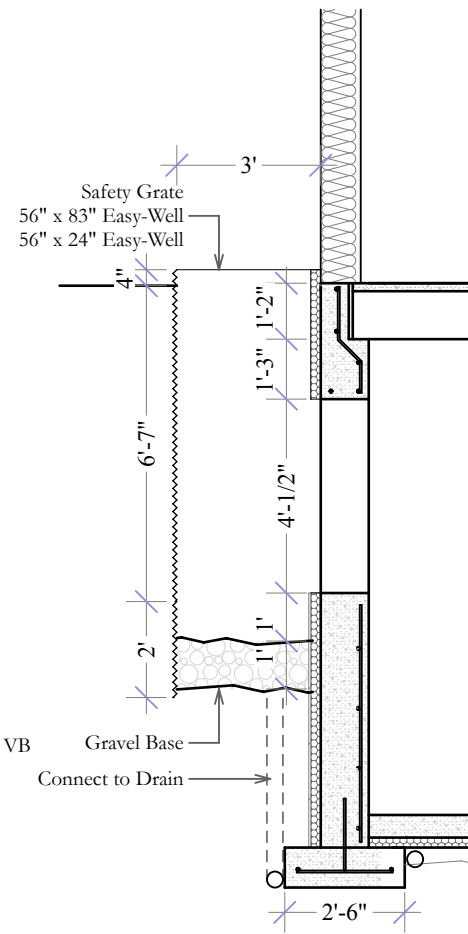
"H"- Basement Window



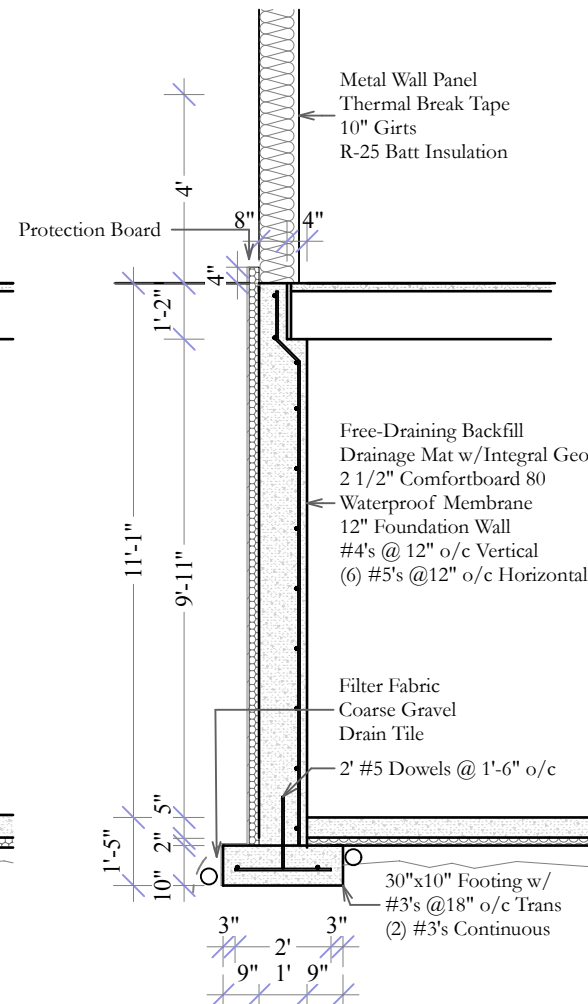
"I" Precast Saddle



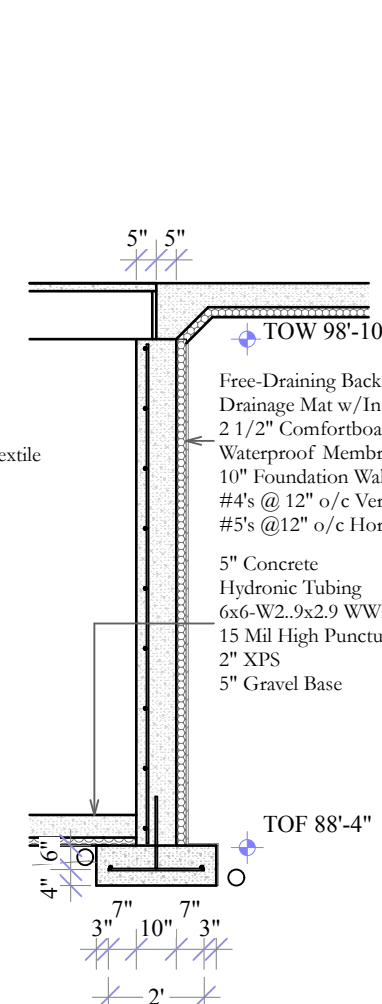
"A"- Service Pit



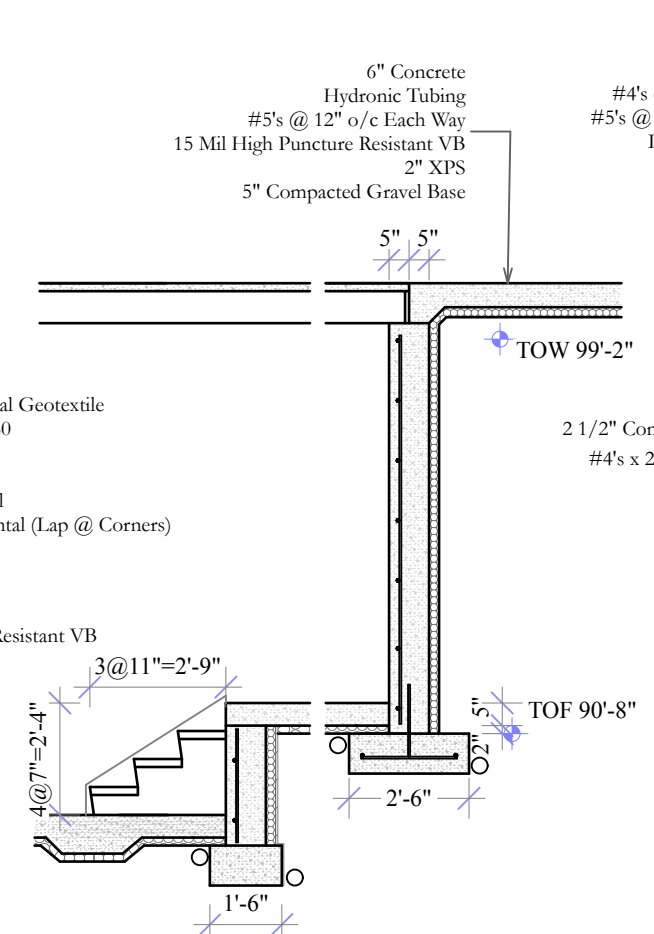
"B"- Area Well



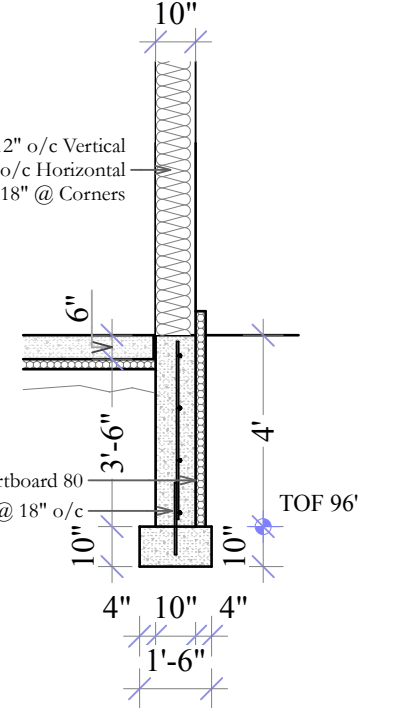
"C"- Basement Exterior



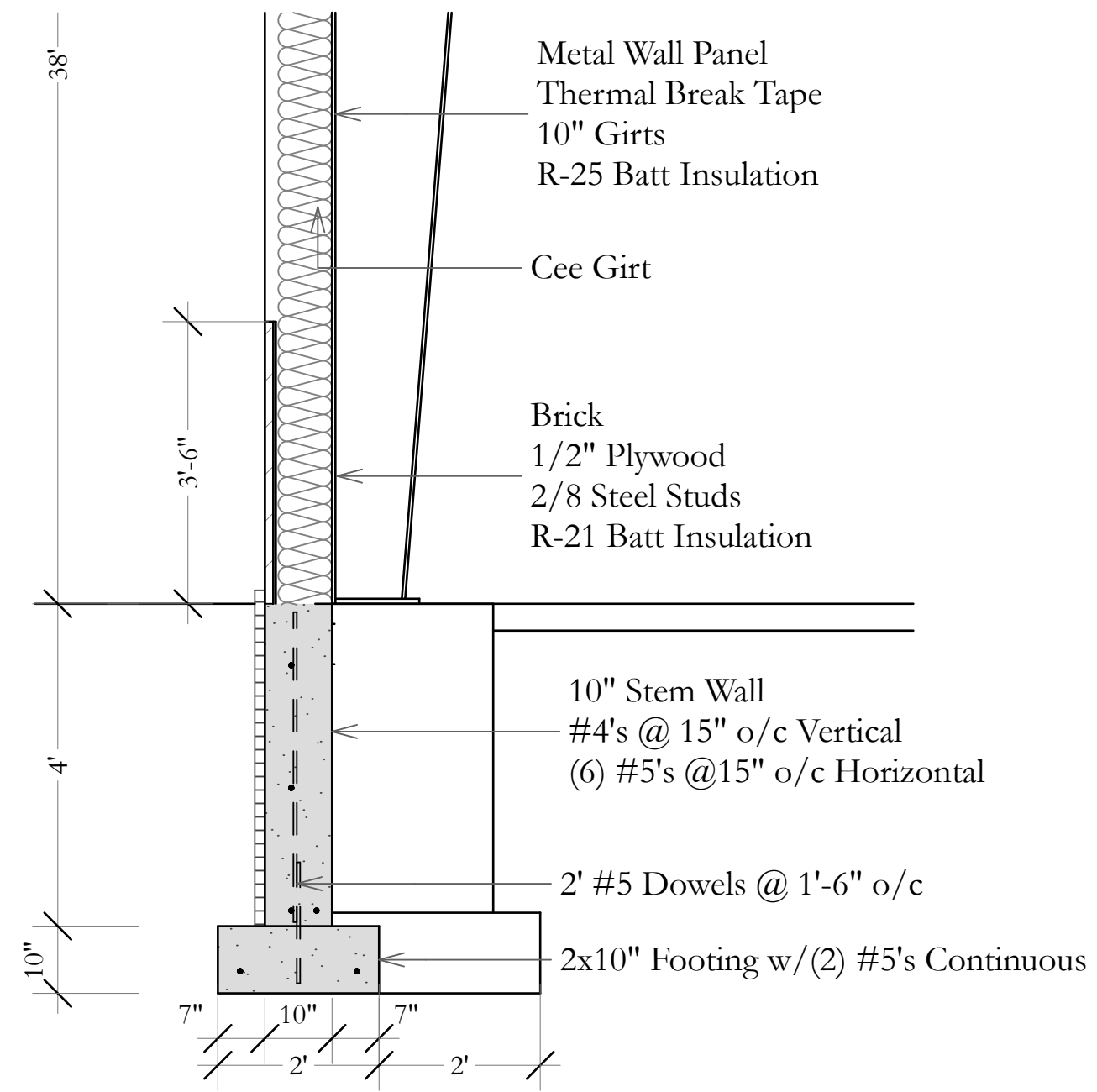
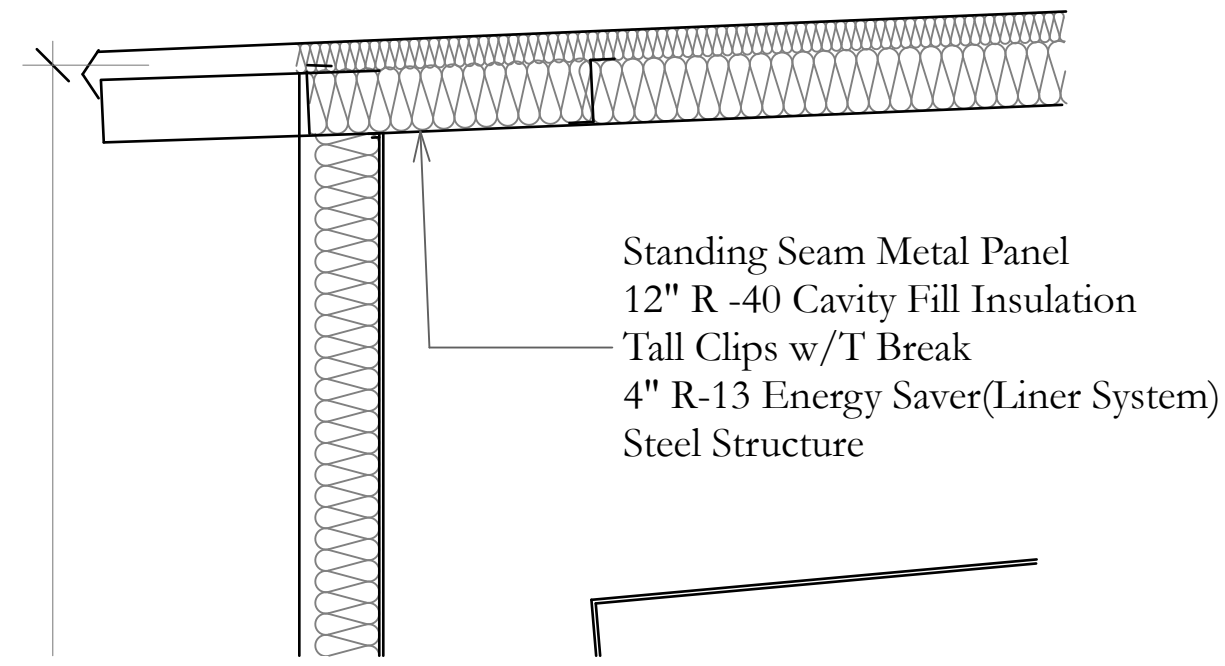
"D"- Basement Interior



"E"- Basement Landing



"F"- Exterior Wall/Slab



Wall Section @ 1/2" = 1'-0"
 German Auto House
 3000 Rimrock Road, Fitchburg, WI
 September 30, 2025

A11



Project Information:

Construct a new five bay service garage for the used vehicle dealership, German Auto House. The project will be located on the previously undeveloped 12,448 SF northeast portion of the property. The existing building and the remainder of the site will remain largely as is.

Site:

| | |
|-----------------------|------------------|
| Previously Impervious | 12,448 SF |
| Building | 4,096 SF - 32.9% |
| Pavement | 3,912 SF - 31.4% |
| Proposed Pervious | 4,440 SF - 35.7% |
| Proposed Impervious | 7,763 SF - 64.3% |

Building:

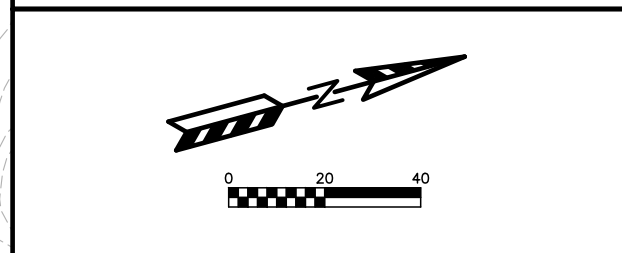
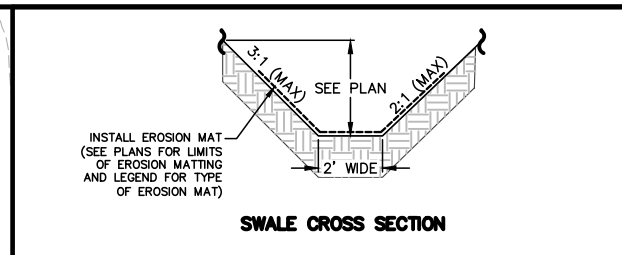
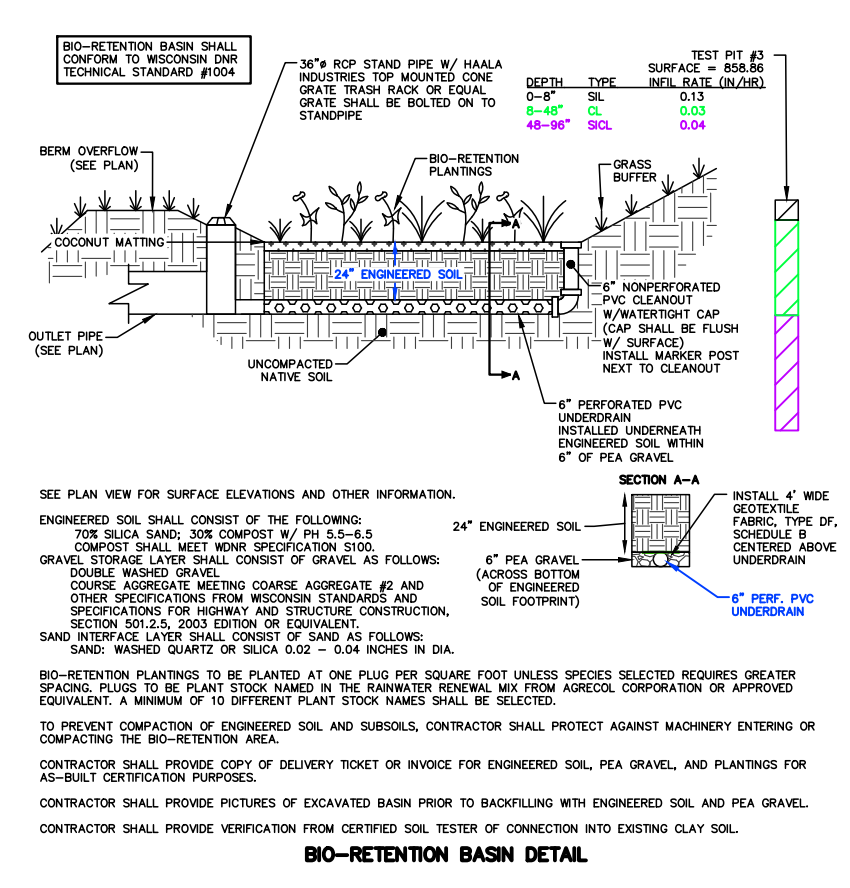
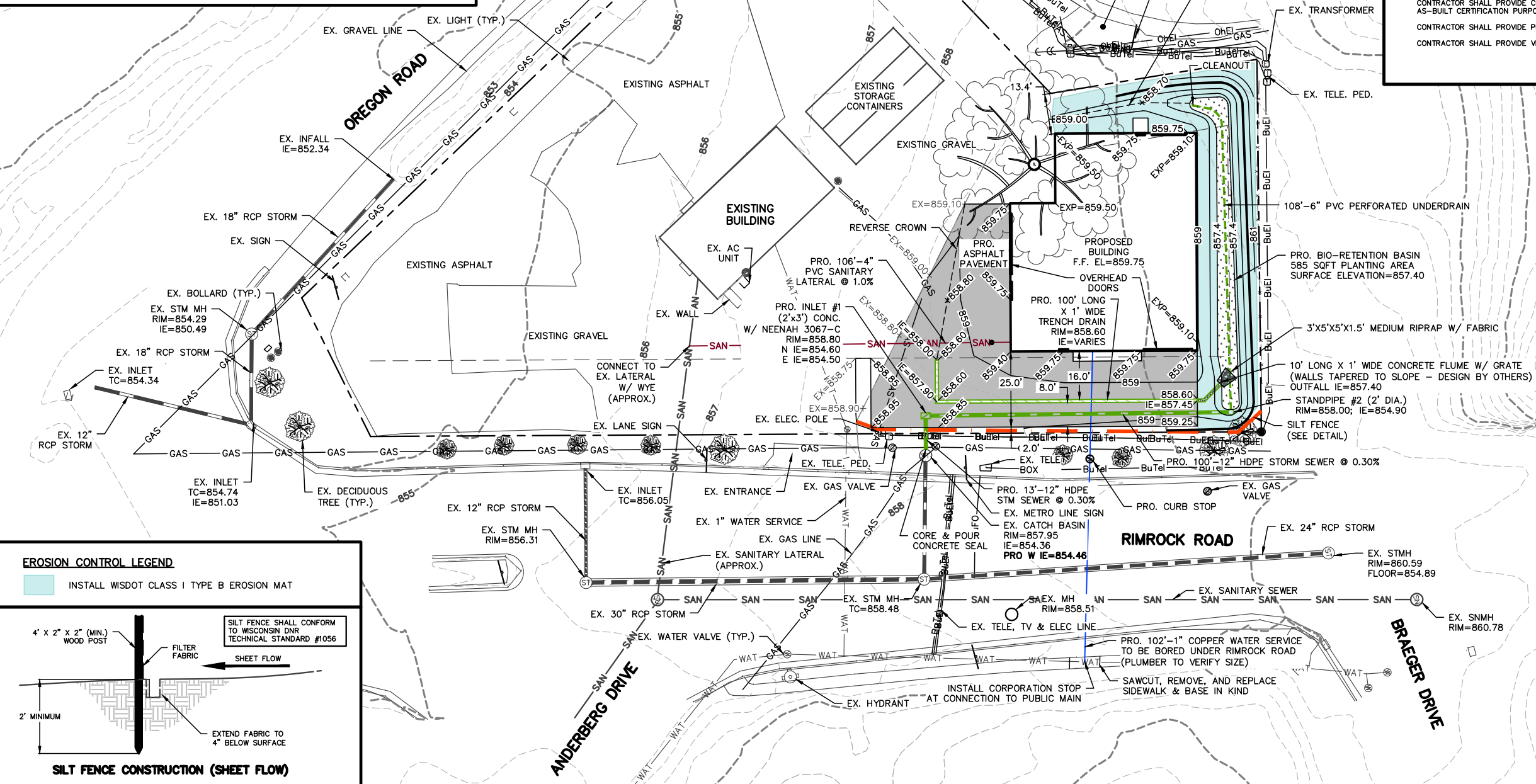
| | |
|---------------|-------------------|
| Foot Print | 4,096 SF |
| Floor Area: | |
| Basement | 900 SF |
| Ground | 4,096 SF |
| Mezzanine | 280 SF |
| Second | 1,726 SF |
| Total | 7,002 SF |
| Occupancy: | S-1 Repair Garage |
| Construction: | II-B Metal Frame |



EROSION NOTES:
 THE EXISTING DRIVEWAY SHALL BE MAINTAINED BY THE CONTRACTOR IN A CONDITION, WHICH WILL PREVENT THE TRACKING OF MUD OR DRY SEDIMENT ONTO THE PUBLIC STREET. SEDIMENT REACHING PUBLIC STREET SHALL BE REMOVED BY STREET CLEANING (NOT HYDRAULIC FLUSHING) BEFORE THE END OF EACH WORKDAY.
 EROSION CONTROL DEVICES SHALL BE INSTALLED PRIOR TO GRADING OPERATIONS AND SHALL BE PROPERLY MAINTAINED FOR MAXIMUM EFFECTIVENESS UNTIL VEGETATION IS ESTABLISHED. ALL EROSION CONTROL MEASURES AND STRUCTURES SERVING THE SITE MUST BE INSPECTED AT LEAST WEEKLY OR WITHIN 24 HOURS OF A 0.5 INCH RAIN EVENT. ALL MAINTENANCE WILL FOLLOW AN INSPECTION WITHIN 24 HOURS.
 CUT AND FILL SLOPES SHALL BE NO GREATER THAN 3:1.
 ALL DISTURBED AREAS MUST BE TEMPORARILY STABILIZED WITHIN 14 DAYS OF LAST ACTIVITY. ALL DISTURBED AREAS SHOULD BE STABILIZED WITHIN 7 DAYS OF FINAL GRADING.
 PERIMETER CONTROL SHALL BE INSTALLED AROUND STOCKPILES, AND STOCKPILES SHALL BE STABILIZED THAT WILL REMAIN INACTIVE FOR 7 DAYS OR LONGER.
 EROSION CONTROL IS THE RESPONSIBILITY OF THE CONTRACTOR UNTIL ACCEPTANCE OF THIS PROJECT. EROSION CONTROL MEASURES AS SHOWN SHALL BE THE MINIMUM PRECAUTIONS THAT WILL BE ALLOWED. THE CONTRACTOR SHALL BE RESPONSIBLE FOR RECOGNIZING AND CORRECTING ALL EROSION CONTROL PROBLEMS THAT ARE A RESULT OF CONSTRUCTION ACTIVITIES. ADDITIONAL EROSION CONTROL MEASURES, AS REQUESTED IN WRITING BY THE STATE OR LOCAL INSPECTORS, OR THE DEVELOPER'S ENGINEER, SHALL BE INSTALLED WITHIN 24 HOURS.

TIME SCHEDULE:
 x - y INSTALL INITIAL EROSION CONTROL DEVICES AND ROUGH GRADE SITE.
 y - z CONSTRUCT PROPOSED BUILDING AND ASPHALT AREAS.
 d APPLY/MAINTAIN EROSION MAT, TARP, WOODCHIPS, OR OTHER COVER TO PEROUS, DISTURBED AREAS THAT HAVE NOT BEEN RESTORED. (PER DNR TECH STANDARD 1058)
 z RESTORE ALL PEROUS DISTURBED AREAS, AND CONSTRUCT THE BIO-BASIN PER DETAILS.

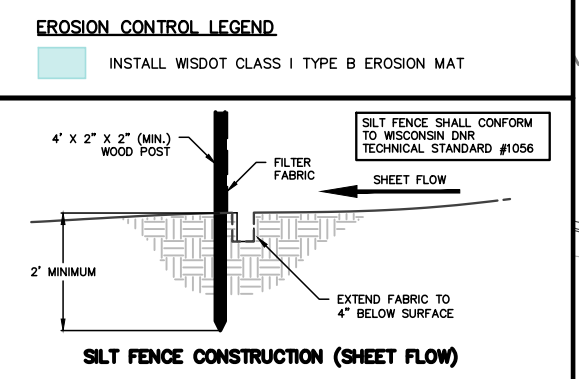
RESTORATION NOTES:
 RESTORATION SHALL OCCUR AS SOON AFTER THE DISTURBANCE AS PRACTICAL.
 ALL PEROUS DISTURBED AREAS SHALL RECEIVE A MINIMUM OF FOUR (4) INCHES OF TOPSOIL, SEED, AND MULCH. RESTORATION WILL OCCUR AS SOON AFTER THE DISTURBANCE AS PRACTICAL. THE BIO-RETENTION BASIN SHALL BE RESTORED PER THE BIO-RETENTION BASIN DETAIL. SEED MIXTURE 40 SHALL BE USED ON ALL OTHER DISTURBED AREAS. ALL SEED MIXTURES SHALL BE IN ACCORDANCE WITH SECTION 630 OF D.O.T. SPECIFICATIONS. AN EQUAL AMOUNT OF ANNUAL RYEGRASS SHALL BE ADDED TO THE MIX.
 ALL PEROUS DISTURBED AREAS SHALL RECEIVE FERTILIZER EXCEPT NATIVE PLANTING AREAS. FERTILIZER SHALL MEET THE FOLLOWING MINIMUM REQUIREMENTS: NITROGEN, NOT LESS THAN 16%, PHOSPHORIC ACID, NOT LESS THAN 8%, POTASH, NOT LESS THAN 8%. FERTILIZER SHALL BE APPLIED AT THE RATE OF FOUR (4) POUNDS PER 1,000 SQUARE FEET. SEED MIXTURE 40 SHALL BE APPLIED AT THE RATE OF FOUR (4) POUNDS PER 1,000 SQUARE FEET. MULCH SHALL CONSIST OF HAY OR STRAW APPLIED AT THE RATE OF TWO (2) TONS PER ACRE.
 SEEDING FROM SEPTEMBER 16 THROUGH NOVEMBER 15 IS TO BE AVOIDED TO PREVENT FREEZING OF NEW GROWTH. DORMANT SEEDING, IF NECESSARY, SHALL BE COMPLETED AFTER NOVEMBER 15. DORMANT SEEDING SHALL NOT BE APPLIED ON TOP OF SNOW. DISTURBED AREAS SHALL HAVE EROSION MAT APPLIED OVER DORMANT SEEDING. IF DORMANT SEEDING DOES NOT RESULT IN AT LEAST 70% COVER BY MAY 15, ADDITIONAL SEEDING SHALL BE REQUIRED.



TO OBTAIN LOCATION OF PARTICIPANTS' UNDERGROUND FACILITIES BEFORE YOU DIG IN WISCONSIN
CALL DIGGERS HOTLINE
 1-800-242-8511
 TOLL FREE
 TDD(FOR THE HEARING IMPAIRED)(800)542-2289
 WIS. STATUTE 182.0175 (1974)
 REQUIRES MIN. OF 3 WORK DAYS NOTICE BEFORE YOU EXCAVATE

GERMAN AUTO HOUSE II - CITY OF FITCHBURG
 PRELIMINARY GRADING AND EROSION CONTROL PLAN
 SHEET: C-2
 DATED: OCTOBER 21, 2024

QUAM ENGINEERING, LLC
 Residential and Commercial Site Design Consultants
 www.quamengineering.com
 4604 Siggekow Road, Suite A - McFarland, Wisconsin 53558
 Phone (608) 838-7750; Fax (608) 838-7752

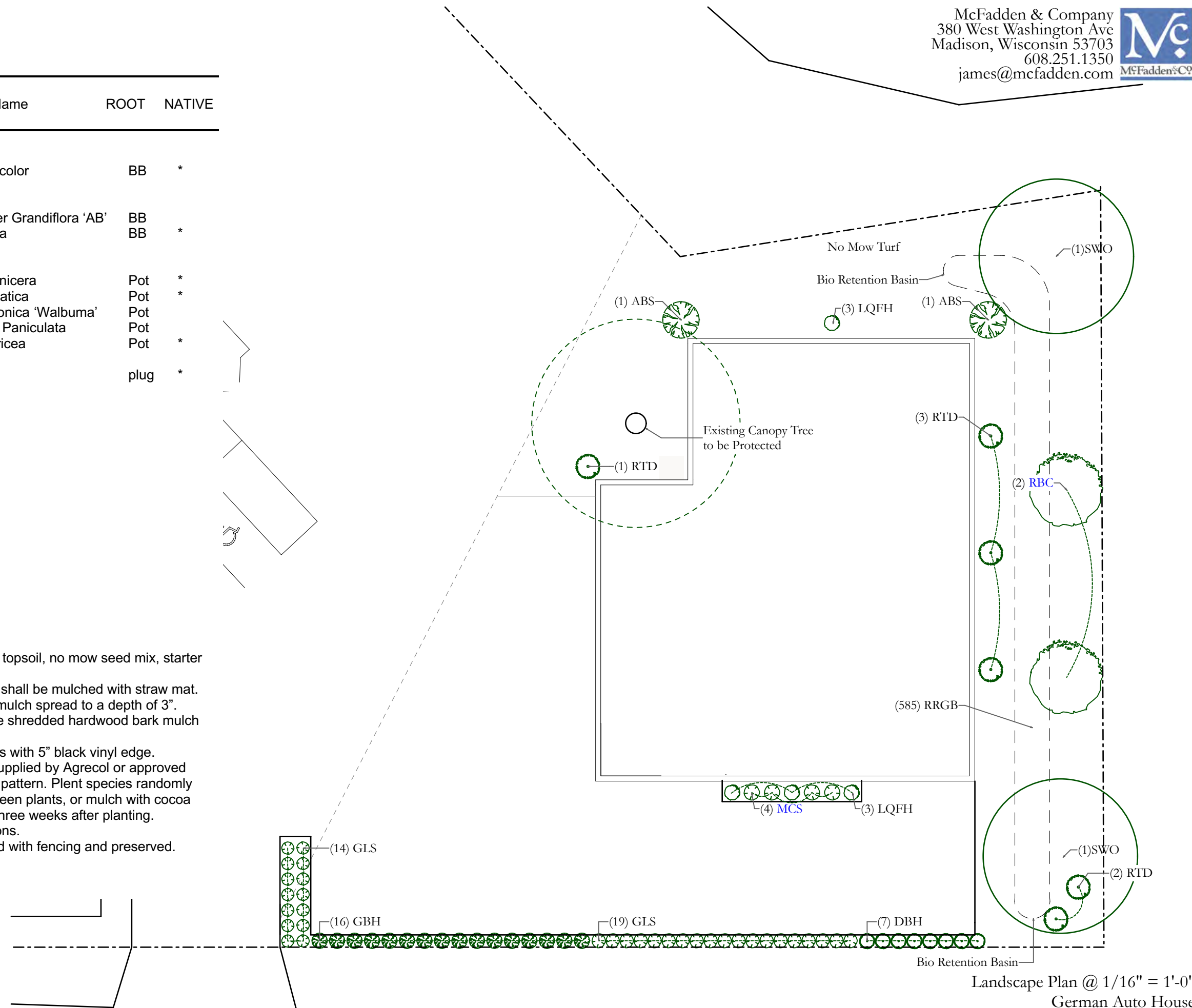


PLANT LIST

| KEY | QUAN | SIZE | COMMON NAME | Botanical Name | ROOT | NATIVE | |
|-----|-------|------|-------------------------------|------------------------------|--------------------------------|--------|------|
| SWO | (2) | 2" | <u>Canopy Trees</u> | | | | |
| | 2 | | Swamp White Oak | Quercus Bicolor | BB | * | |
| ABS | (5) | 6' | <u>Understory Trees</u> | | | | |
| | 3 | | Autum Brilliance Serviceberry | Amelanchier Grandiflora 'AB' | BB | | |
| | 2 | | River Birch Clump | Betula Nigra | BB | * | |
| DBH | (141) | 24" | <u>Deciduous Shrubs</u> | | | | |
| | 23 | | Dwarf Bush Honeysuckle | Diervilla Lonicera | Pot | * | |
| | 39 | | Gro Low Sumac | Rhus Aromatica | Pot | * | |
| | MCS | | 4 | Magic Carpet Spirea | Spirea Japonica 'Walbuma' | Pot | |
| | LQFH | | 3 | Little Quick Fire Hydrangea | Hydrangea Paniculata | Pot | |
| | RTD | | 6 | Red Twig Dogwood | Cornus Sericea | Pot | * |
| | RGP | | (585) | 2 1/2" | <u>Bio-retention Plantings</u> | | plug |
| | | | Common Blue Star | | | | |
| | | | Bottle Gentine | | | | |
| | | | Obedient Plant | | | | |
| | | | Columbine | | | | |
| | | | Switchgrass | | | | |
| | | | Black Eyed Susan | | | | |
| | | | Wild Iris | | | | |
| | | | Swamp Milkweed | | | | |
| | | | White Turtlehead | | | | |
| | | | Cardinal Flower | | | | |
| | | | Turk's Cap Lily | | | | |
| | | | Little Bluestem | | | | |
| | | | Canada Wild Rye | | | | |
| | | | Nodding Onion | | | | |

NOTES:

- 1) Designated no mow turf areas to receive a minimum of 4" of topsoil, no mow seed mix, starter fertilizer, and straw or straw mat mulch.
- 2) No mow turf areas in swales and on slopes greater than 3:1 shall be mulched with straw mat.
- 3) Planting beds to be mulched with shredded hardwood bark mulch spread to a depth of 3".
- 4) Individual trees and shrub groupings in lawn areas to receive shredded hardwood bark mulch plant rings (4' diameter) spread to a depth of 3".
- 5) Designated planting beds separated from lawn and turf areas with 5" black vinyl edge.
- 6) Bio-retention areas to be planted with 2" x 2" x 5" plugs as supplied by Agrecol or approved equal. Plugs to be installed 12" on center in a triangular grid pattern. Plant species randomly throughout specified areas. Apply bark mulch (2" thick) between plants, or mulch with cocoa mat fabric. Apply 1/2" water daily (in the absence of rain) for three weeks after planting.
- 7) Bio-retention areas to be constructed per WDNR specifications.
- 8) Existing canopy tree adjacent to new building to be protected with fencing and preserved.
- 9) Note: * denotes native plant.





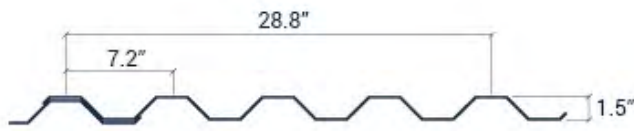
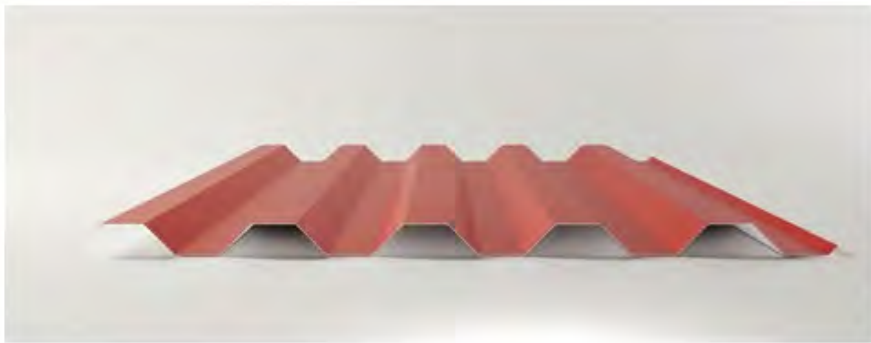
Roof

SUPER SEAM PLUS



Super Seam Plus is a mechanically seamed roof panel. It is available in 24 gauge only.

- UL Construction No. 180C, 287, 308A, 450, 538, 539, 540
- UL 580 Up-Lift tested / Class 90 Rated
- UL 2218 Hail Impact Resistant Tested
Inclined: Unlimited / Impact Class 4
- Florida Product Approval*



7.2N RIB FEATURES

| | |
|----------------|--------|
| Roofing | Yes |
| Siding | Yes |
| Coverage Width | 28.8" |
| Rib Spacing | 7.2" |
| Rib Height | 1-1/2" |
| Minimum Slope | 1/2:12 |

Wall



Wall

Galvalume Plus®



Doors

Steel Gray



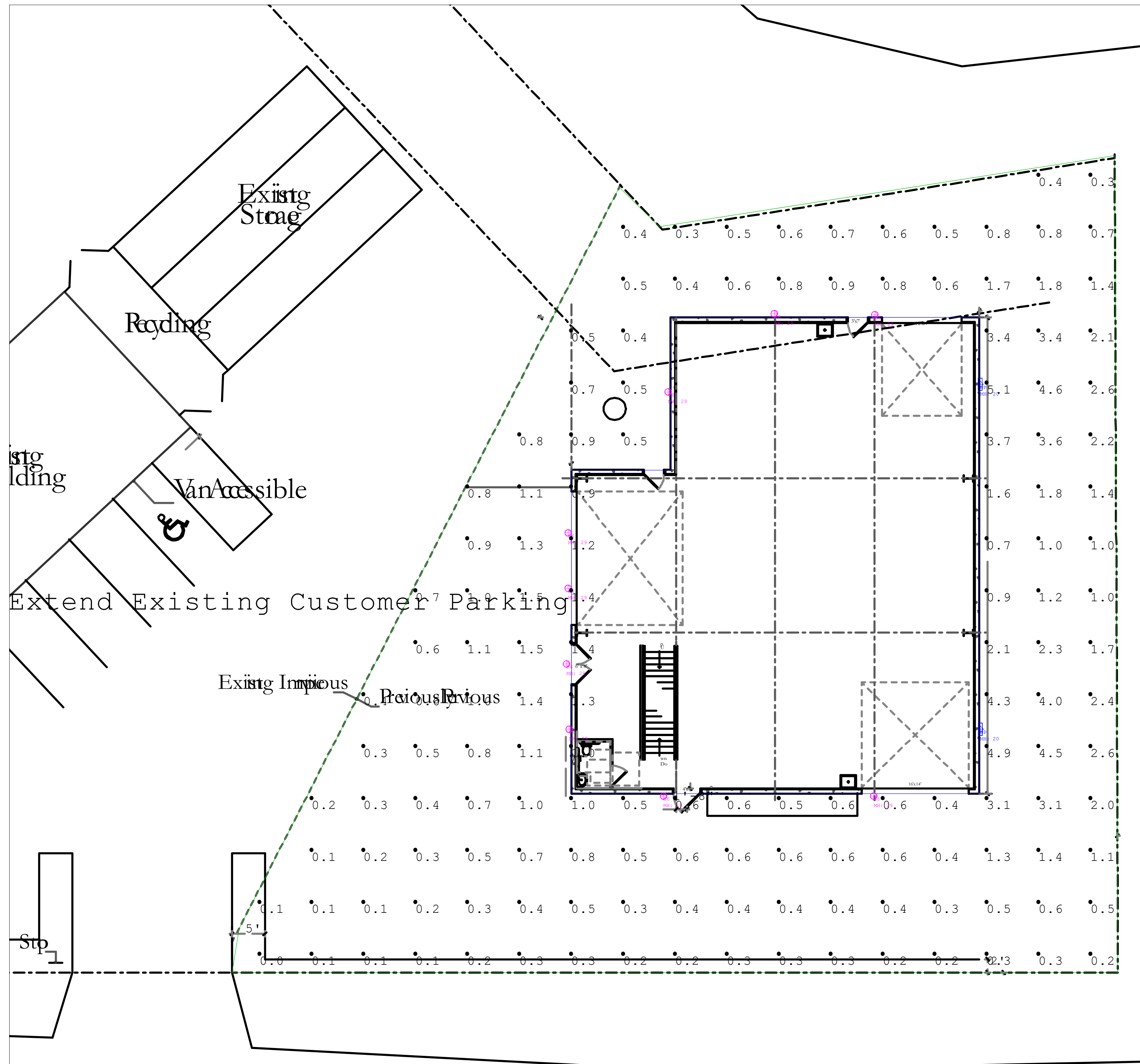
Window Frames

Black



Roof

Fern Green



| Symbol | Qty | Tag | Label | Arrangement | Description | [MANUFAC] | LLF | Luminaire Lumens | Luminaire Watts | Total Watts |
|--------|-----|-----|--------------|-------------|--------------|----------------------|-------|------------------|-----------------|-------------|
| ⊙ | 9 | S6 | 5006-CC | Single | 5006-CC | | 0.900 | 1234 | 14.1165 | 127.048 |
| ⊙ | 2 | WP | WPSLS-04L-50 | Single | WPSLS-04L-50 | LSI INDUSTRIES, INC. | 0.900 | 4394 | 37.05 | 74.1 |

| Calculation Summary | | | | | | | |
|---------------------|-------------|-------|------|-----|-----|---------|---------|
| Label | CalcType | Units | Avg | Max | Min | Avg/Min | Max/Min |
| Calc Pts_Floor | Illuminance | Fc | 1.03 | 5.1 | 0.0 | N.A. | N.A. |

1. Standard reflectance of 80/50/20 unless noted otherwise
2. Not a construction document, for design purposes only
3. Standard indoor calc points @ 30" AFF unless noted otherwise
4. Standard outdoor calc points @ grade unless noted otherwise
5. Visual Impact assumes no responsibility for installed light levels due to field conditions, etc.
6. Standard LLF of 0.90 unless noted otherwise

Visual Impact Lighting
 1724 Industrial Drive
 920-437-2069
 visualimpactlighting.com



| # | Date | Comments |
|---|------|----------|
| | | |
| | | |
| | | |

Revisions

Drawn By: ATH
 Checked By:
 Date: 11/1/2024

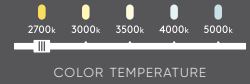
Scale:

German Auto Haus

Excel

LED panel lights are more accessible than ever before. The sleek and minimal construction allows for the easiest of installations.

UPGRADE



| Model | Size | Watts | Delivered lumens | CRI | Color °T | Standard voltage | Multi-voltage ⚡ |
|-------------------|------|-------|------------------|-----|--------------------------------|---------------------|-------------------------------------|
| 5003-CC | 3" | 8 W | 600 lm | 90 | 2700, 3000, 3500, 4000, 5000 K | 120V, Triac dimming | MV: 120 / 277 / 347V, 0-10V dimming |
| 5004-CC | 4" | 11 W | 800 lm | | | | |
| 5005-CC | 5" | 12 W | 900 lm | | | | |
| 5006-CC | 6" | 14 W | 1100 lm | | | | |
| 5004SQ-CC* | 4" | 11 W | 800 lm | | | | |

*Square model

Specifications

Every fixture includes a junction box with an integrated driver
 Over 50,000 hours of service life
 Can be daisy chained
 Minimal heat emission
 Edge lit technology
 Cast aluminum construction
 Switch-selectable CCT: 2700 K/3000 K/3500 K/4000 K/5000 K
 Very low profile
 IC certification (suitable for direct contact with insulation)
 Air-tight certified as per ASTM E283-04
 Suitable for wet locations
 Ideal operating temperature: -20° to 40° C
 Refer to website for dimmer compatibility
 5-year warranty

Finish

- **BK** Black
- **SN** Satin Nickel (5004-CC only)
- **WH** White

Multi-voltage ⚡

This product family offers multi-voltage drivers (120/277/347) that are dimmable using 0-10V dimming systems. Please note that longer lead times may apply for this option. Kindly reach out to your DALI representative for additional information and to confirm availability.

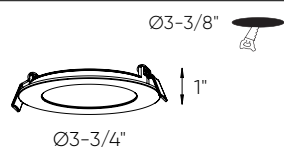
Note

Other color temperatures, finishes, and voltage options are available but may require minimum order quantities (MOQs) and longer lead times. Please contact your DALI representative for more information.

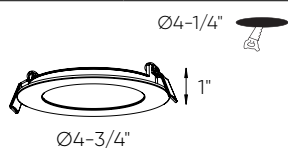
Accessories

- REC-TRIM4-BK (5004)**
4" recessed panel trim in black
- REC-TRIM4-GD (5004)**
4" recessed panel trim in gold
- REC-TRIM4-SN (5004)**
4" recessed panel trim in satin nickel
- REC-TRIM6-BK (5006)**
6" recessed panel trim in black
- REC-TRIM6-GD (5006)**
6" recessed panel trim in gold
- REC-TRIM6-SN (5006)**
6" recessed panel trim in satin nickel
- 5000-EXT8FT**
8-foot extension cable
- 5000-EXT20FT**
20-foot extension cable
- RFP-23 (5003)**
Rough-in plate
- RFP-46 (5004, 5006)**
Rough-in plate
- RFP-58 (5005)**
Rough-in plate
- RFP-UNI (5003, 5004, 5006)**
Universal rough-in plate

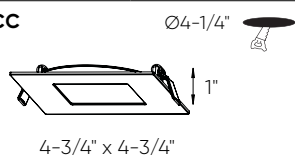
5003-CC



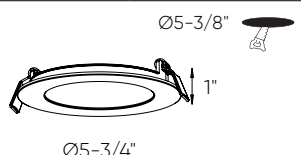
5004-CC



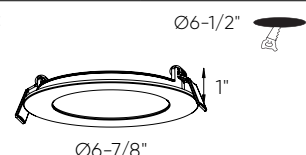
5004SQ-CC



5005-CC



5006-CC



4-1/8" x 2-1/2"
x 1-3/8"

4-1/8" x 2-1/2"
x 1-3/8"

5" x 2-13/16"
x 1-7/16"



Slim Wall Pack (WPSLS)

Small LED Slim Wall Pack



| OVERVIEW | |
|----------------------|---------------|
| Lumen Package (lm) | 1,000 - 4,000 |
| Wattage Range (W) | 12 - 40 |
| Efficacy Range (LPW) | 98 - 122 |
| Weight lbs (kg) | 3.8 (1.7) |

QUICK LINKS

FEATURES & SPECIFICATIONS

Construction

- Rigid Precision Die cast-aluminum housing for durability and consistency.
- Vertical fins serve as a heat sink and resist accumulation of dust and debris.
- The Patent Pending thermal stacking heat removal technology extracts heat from within the housing moving it away from LEDs and integral components.
- Luminaire hinges open from the bottom to prevent leakage.
- Luminaire is proudly manufactured and tested in the U.S.
- Fixtures are finished with LSI's DuraGrip® polyester powder coat finishing process. The DuraGrip finish withstands extreme weather changes without cracking or peeling. Other standard LSI finishes available. Consult factory.

Optical System

- High-performance Chip On Board (COB) LEDs behind clear tempered glass for maximum light output.
- 3000K | 4000K | 5000K color temperatures.
- Minimum CRI of 71.
- Zero uplight.

Electrical

- High-performance driver features over-voltage, under voltage, short-circuit and over temperature protection.
- 0-10 volt dimming (10% - 100%) standard.
- Standard Universal Voltage (120-277 Vac) Input 50/60 Hz
- L70 Calculated Life: >100k Hours
- Total harmonic distortion: <20%
- Power factor: >.85
- Input power stays constant over life.
- Driver Off-State Power is 0 watts.
- Chip On Board (COB) LEDs with integrated circuit board mounted directly to the housing to maximize heat dissipation and promote long life.
- Components are fully encased in potting material for moisture resistance. Driver complies with FCC standards. Driver and key electronic components can easily be accessed.
- Minimum 2.5kV surge rating
- Operating temperature: -40°C to +50°C (-40°F to +122°F).

Controls

- Optional 120V electronic button Photocontrol.
- Apertures for field or factory installed photocontrol.

Installation

- Surface mounts direct to J-box or wall.
- Features a bubble level and removable hinged face frame for ease of installation.

Warranty

- LSI luminaires carry a 5-year limited warranty. Refer to <https://www.lsicorp.com/resources/terms-conditions-warranty/> for more information.
- 1 Year warranty on optional Button Photocell.

Listings

- Listed to UL 1598 and UL 8750.
- American Recovery and Reinvestment Act Funding Compliant.
- CSA Listed
- RoHS Compliant.
- State of California Title 24.
- Suitable For Wet Locations.
- DesignLights Consortium® (DLC) Premium qualified product. Not all versions of this product may be DLC Premium qualified. Please check the DLC Qualified Products List at www.designlights.org/QPL to confirm which versions are qualified.



Slim Wall Pack (WPSLS)

Type: _____

 **Have questions?** Call us at (800) 436-7800

ORDERING GUIDE

| TYPICAL ORDER EXAMPLE: WPSLS LED 1L UNV DIM 30 PCI 120 BZA | | | | |
|--|---|---|--|---|
| Prefix | Lumen Package | Color Temperature | Controls | Finish |
| WPSLS - Small Slim Wall Pack | 1L - 1,000 2L - 2,000 4L - 4,000 | 50 - 5000K 40 - 4000K 30 - 3000K | PCI 120 - 120V Photocontrol PCI 208-277 - 208-277V Photocontrol | WHT - White BLK - Black BRZ - Bronze |



Need more information?
[Click here for our glossary.](#)

Have additional questions?
 Call us at (800) 436-7800



PERFORMANCE

| Delivered Lumens | | | | | | | |
|------------------|------------------|----------|------------------|----------|------------------|----------|---------|
| Lumen Package | 3000K | | 4000K | | 5000K | | Wattage |
| | Delivered Lumens | Efficacy | Delivered Lumens | Efficacy | Delivered Lumens | Efficacy | |
| 1L | 1206 | 97.79 | 1206 | 97.79 | 1366 | 111.11 | 12 |
| 2L | 2125 | 107.2 | 2125 | 107.2 | 2418 | 121.97 | 20 |
| 4L | 3712 | 100.18 | 3712 | 100.18 | 4394 | 116.21 | 40 |

| LED | | HID | | | Annual Savings |
|-----------|-------------|----------------|--------------------|-------------|----------------|
| Wattage | Annual Cost | Source Wattage | Total Wattage Used | Annual Cost | |
| 12 | \$5 | 50 | 72 | \$52 | \$47 |
| | | 70 | 90 | \$59 | \$54 |
| 20 | \$9 | 50 | 72 | \$52 | \$43 |
| | | 70 | 90 | \$59 | \$50 |
| | | 100 | 129 | \$77 | \$68 |
| 40 | \$18 | 100 | 129 | \$77 | \$59 |
| | | 150 | 185 | \$100 | \$82 |
| | | 175 | 210 | \$112 | \$94 |

Slim Wall Pack (WPSLS)

Type : _____

 Have questions? Call us at (800) 436-7800

PHOTOMETRICS

Luminaire photometry has been conducted by a NVLAP accredited testing laboratory in accordance with IESNA LM-79-08. As specified by IESNA LM-79-08 the entire luminaire is tested as the source resulting in a luminaire efficiency of 100%.

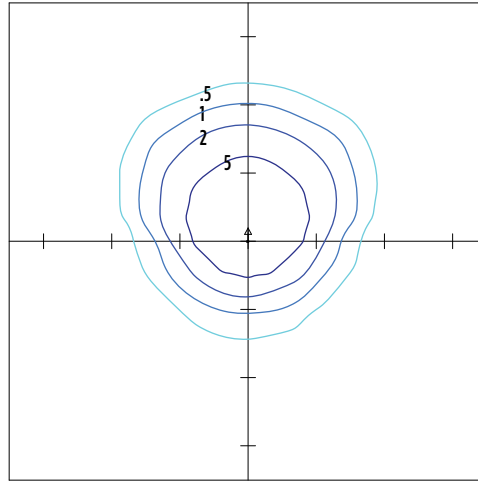
See the individual product page on <https://www.lsicorp.com/> for detailed photometric data.

WPSLS-4L-40

| Luminaire Data | |
|--------------------------|-----------------------|
| Wide Distribution | |
| Description | 4000 Kelvin, 70 CRI |
| Delivered Lumens | 4,053 |
| Watts | 37.0 |
| Efficacy | 109 |
| IES Type | Type III - Very Short |
| BUG Rating | B1-U0-G1 |

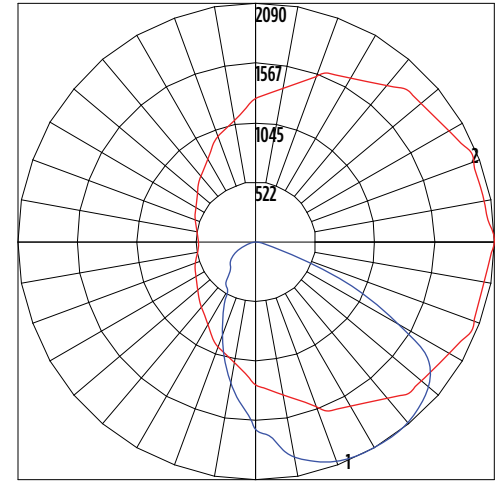
| Zonal Lumen Summary | | |
|---------------------|---------------|-------------|
| Zone | Lumens | % Luminaire |
| Low (0-30°) | 1239.6 | 30.6% |
| Medium (30-60°) | 2246.2 | 55.4% |
| High (60-80°) | 559.6 | 13.8% |
| Very High (80-90°) | 7.3 | 0.2% |
| Uplight (90-180°) | 0.0 | 0.0% |
| Total Flux | 4052.7 | 100% |

ISO Footcandle



10' Mounting Height / 10' Grid Spacing
 10 FC 5 FC 2 FC 1 FC

Polar Curve



Vertical Plane Horizontal Cone

PRODUCT DIMENSIONS

