



October 10, 2025

City of Fitchburg
Attn: Ms. Deanna Schmidt
Planner & Zoning Administrator
5520 Lacy Road
Fitchburg, WI 53711

RE: The Lido - Major Construction Early Start Request

Ms. Schmidt,

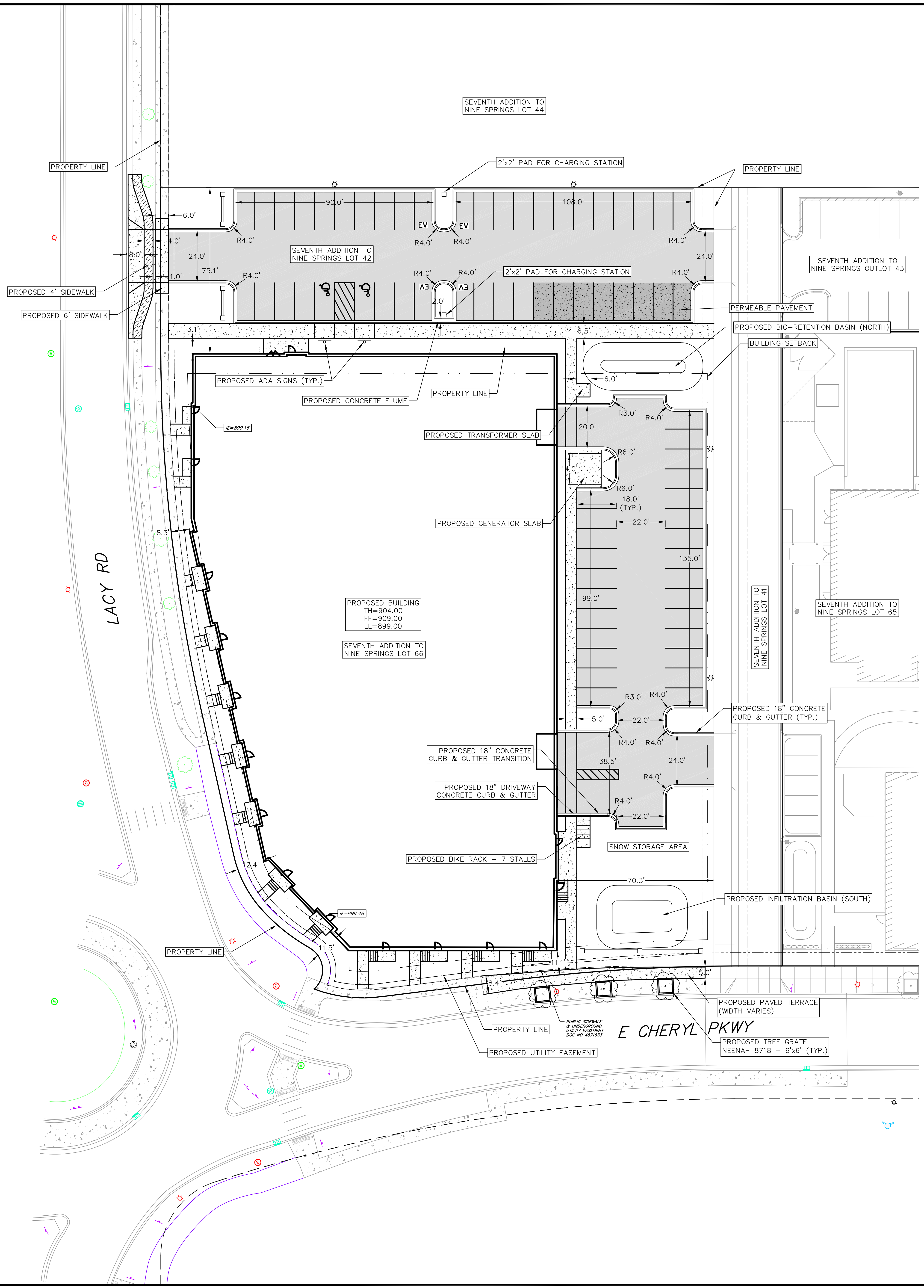
On behalf of Chris Armstrong and Avante Properties, Vierbicher is requesting to be on the next agenda for application for Major Construction Early Start for The Lido (Lot 66 and OL 42 of Seventh Addition to Nine Springs Plat). The project will be submitted for E-Plan Exam shortly. Attached are the Civil Site Plan, Landscape Plan, and Architectural Building Elevations.

Please contact me if you need any additional information.

Sincerely,

Sarah V. Church, PE
Project Manager

Enclosures: Civil Site Plan
Landscape Plan
Architectural Building Elevations



SITE PLAN LEGEND

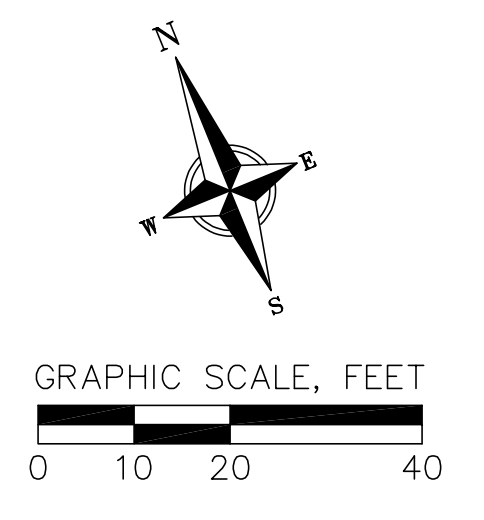
- PROPERTY BOUNDARY
- ▨ CURB AND GUTTER (REVERSE CURB HATCHED)
- PROPOSED CHAIN LINK FENCE
- PROPOSED WOOD FENCE
- ▒ PROPOSED CONCRETE
- ▓ PROPOSED LIGHT-DUTY ASPHALT
- ▔ PROPOSED PERMEABLE PAVEMENT
- ▭ PROPOSED BUILDING
- ☆ PROPOSED SIGN
- ★ PROPOSED LIGHT POLE
- PROPOSED BOLLARD
- ▭ PROPOSED ADA DETECTABLE WARNING FIELD
- ♿ PROPOSED HANDICAP PARKING

- SITE PLAN NOTES:**
1. CONCRETE TO BE 5" THICK, CONSTRUCTED ON A BASE OF 4" COMPACTED SAND OR CRUSHED STONE.
 2. CONCRETE FOR DRIVEWAYS AND SIDEWALK AT DRIVEWAY ENTRANCES SHALL BE 7" THICK, CONSTRUCTED ON A BASE OF 5" COMPACTED SAND OR CRUSHED STONE.
 3. ALL DIMENSIONS WITH CURB & GUTTER ARE REFERENCED TO THE FACE OF CURB.
 4. CONTRACTOR SHALL DEEP TILL ANY DISTURBED AREAS AFTER CONSTRUCTION IS COMPLETE AND BEFORE RESTORING.
 5. CONTRACTOR TO OBTAIN ANY NECESSARY DRIVEWAY CONNECTION, RIGHT OF WAY AND EXCAVATION PERMITS PRIOR TO CONSTRUCTION.
 6. ANY SIDEWALK AND CURB & GUTTER ABUTTING THE PROPERTY SHALL BE REPLACED IF IT IS DAMAGED DURING CONSTRUCTION OR IF THE CITY ENGINEERING DEPARTMENT DETERMINES THAT IT IS NOT AT A DESIRABLE GRADE, REGARDLESS OF WHETHER THE CONDITION EXISTED PRIOR TO BEGINNING CONSTRUCTION.

SITE PLAN DATA TABLE

TRANSECT ZONE	T5
SITE SIZE (LOT66/OL42)	83,995 SF
LOT COVERAGE ¹	82.63% (69,375 SF)
IMPERVIOUS AREA	68,304 SF
PARKING STALLS	171 TOTAL (5 ADA)

¹ ASSUMES PERMEABLE PAVEMENT DOES NOT COUNT TOWARDS LOT COVERAGE AREA



REVISIONS		NO.	DATE	REMARKS

DATE: 9/26/2025
DRAFTER: JGOL
CHECKED: JZAM
PROJECT NO.: 170229

NOT FOR CONSTRUCTION

GENERAL NOTES

- A) Areas labeled "Red B Processed Mulch" to receive a mixture of recycled wood mulch, un-dyed, spread to a 3" depth over pre-emergent herbicide.
- B) Individual trees (and shrub groupings) found along perimeter of property as well as those found within lawn areas to receive Red B Processed Mulch rings consisting of a mixture of recycled wood mulch, un-dyed, spread to a minimum 3" depth (3' wide beds for shrub groupings).
- C) "Vinyl Edging" to be Valley View Black Diamond Vinyl Edging or equivalent.
- D) Areas labeled "Washed Stone" to receive 1-1/2" Washed Stone spread to a 3" depth over fabric weed barrier.
- E) Areas labeled "Eau Claire Stone" to receive 1-1/2" Eau Claire Stone spread to a 3" depth over fabric weed barrier.
- F) Areas labeled "Compost Blanket Seed" shall receive the following:
 1. Grade area to approximately 4" below finish grade.
 2. Spread topsoil to within 1" of finish grade.
 3. Compost is applied uniformly to entire area at 1" depth. Seed, water-holding polymer and starter fertilizer are incorporated into compost layer.
- G) "Compost Blanket Seed" areas shall be seeded at a rate of 4 lbs. per 1,000 sq. ft., polymer applied at 3 lbs. per 1,000 sq. ft. and starter fertilizer applied at 4 lbs. per 1,000 sq. ft.
- H) "Seed" areas shall be finish-graded and seeded at a rate of 4 lbs. per 1,000 sq. ft.
- I) Seed shall consist of the following mixture:
 - 10% Palmer IV Perennial Ryegrass
 - 20% Dragon Kentucky Bluegrass
 - 20% Diva Kentucky Bluegrass
 - 20% Foxy II Creeping Red Fescue
 - 15% Vail II Perennial Ryegrass
 - 15% Ginney Kentucky Bluegrass
- J) Areas labeled "Seed/Mat" shall be seeded with the above-noted premium lawn seed mixture and overlaid with DS75 straw erosion control netting that is then pegged into the soil with metal staples.
- K) Plant beds in parking islands and adjacent to building foundation to be mulched with 1-1/2" diameter washed stone mulch spread to a 3" depth over fabric weed barrier.

BIO-RETENTION / INFILTRATION DEVICE PLANT LIST

Quantity Common Name Scientific Name Planting Size Plant Spacing
(Total Basin Area = 1,450 SF)
(Planting schedule based on 12" on center spacing)

GRASSES AND SEDGES

128	VIRGINIA WILD RYE	ELYMUS VIRGINICUS	2.5" POT	12" O.C. Rect. Spacing
128	SWITCH GRASS	PANICUM VIRGATUM	2.5" POT	12" O.C. Rect. Spacing
128	LITTLE BLUESTEM	SCHIZACHYRIUM SCOPARIUM	2.5" POT	12" O.C. Rect. Spacing
128	INDIAN GRASS	SORGHASTRUM NUTANS	2.5" POT	12" O.C. Rect. Spacing
128	FOX SEDGE	CAREX VULPINOIDEA	2.5" POT	12" O.C. Rect. Spacing

FORBS

64	NEW ENGLAND ASTER	ASTER NOVAE-ANGLIAE	2.5" POT	12" O.C. Rect. Spacing
64	PRAIRIE BLAZING STAR	LIATRIS PYCNOSTACHYA	2.5" POT	12" O.C. Rect. Spacing
64	FALSE SUNFLOWER	HELIOPSIS HELIANTHOIDES	2.5" POT	12" O.C. Rect. Spacing
128	WILD IRIS	IRIS VIRGINIANA SHREVEI	2.5" POT	12" O.C. Rect. Spacing
64	CARDINAL FLOWER	LOBELIA CARDINALIS	2.5" POT	12" O.C. Rect. Spacing
64	BERGAMOT	MONARDA FISTULOSA	2.5" POT	12" O.C. Rect. Spacing
64	SWEET BLACK-EYED SUSAN	RUDBECKIA SUBTOMENTOSA	2.5" POT	12" O.C. Rect. Spacing
64	STIFF GOLDENROD	SOLIDAGO RIGIDA	2.5" POT	12" O.C. Rect. Spacing
64	IRONWEED	VERONIA FASCICULATA	2.5" POT	12" O.C. Rect. Spacing
64	BLUE LOBELIA	LOBELIA SIPHILITICA	2.5" POT	12" O.C. Rect. Spacing
64	MARSH MILKWEED	ASCLEPIAS INCARNATA	2.5" POT	12" O.C. Rect. Spacing
64	JOE PYE WEED	EUTROCHUM PURPUREUM	2.5" POT	12" O.C. Rect. Spacing

Plants List - Ground Level

Shade Trees-01				
Number	Abbreviation	Species	Common Name	Pot Size Symbol
3	FFM	Acer Saccharum 'bailista'	Fall Fiesta Sugar Maple	2" B&B
5	CHB	Celtis Occidentalis 'chicagoland'	Chicagoland Hackberry	2" B&B
3	NPOA	Quercus Ellipsoidalis	Northern Pin Oak	2" B&B
5	CSO	Quercus X Bimundorum 'crimschmidt'	Crimson Spire Oak	2" B&B
Shrubs-03				
Number	Abbreviation	Species	Common Name	Pot Size Symbol
9	IBBC	Aronia Melanocarpa 'morton'	Iroquois Beauty Black Chokeberry	#3 CONT.
8	FD	Cornus Sericea 'bailadeline'	Firedance Dogwood	#2 CONT.
4	BBH	Hydrangea Macro 'blushing Bride'	Blushing Bride Hydrangea	#2 CONT.
10	SBSH	Hydrangea Paniculata 'rensun'	Strawberry Sundae Hydrangea	#5 CONT.
11	AJN	Physocarpus Opulifolius 'jefam'	Amber Jubilee Ninebark	#5 CONT.
Arboretum-07				
Number	Abbreviation	Species	Common Name	Pot Size Symbol
10	EA	Thuja Occidentalis 'smaragd'	Emerald Arborvitae	6' B&B

Perennials-11				
Number	Abbreviation	Species	Common Name	Pot Size Symbol
27	BFH	Agastache 'blue Fortune'	Blue Fortune Anise Hyssop	45 CONT.
30	SBA	Allium 'summer Beauty'	Summer Beauty Onion	#1 CONT.
9		Astilbe Chinensis 'vision In Pink'	Vision In Pink Astilbe	#1 CONT.
18	PCF	Echinacea Purpurea	Purple Coneflower	#1 CONT.
13	SSG	Panicum Virgatum 'shenandoah'	Shenandoah Switch Grass	#1 CONT.
11	CCPH	Phlox Paniculata 'ditromfav'	Cotton Candy Phlox	#1 CONT.
8	BLP	Phlox Paniculata Luminary 'backlight'	Backlight Garden Phlox	#1 CONT.
27	GBES	Rudbeckia Ful Var Sullivan 'goldsturm'	Goldsturm Black-Eyed Susan	#1 CONT.
10	BTF	Salvia 'back To The Fuchsia'	Back To The Fuchsia Sage	#1 CONT.
23	LBS	Schizachyrium Scoparium	Little Bluestem	#1 CONT.
47	PRD	Sporobolus Heterolepis	Prairie Dropseed	#1 CONT.



SYMBOL LEGEND

Downspout	Access Cover	Satellite Dish
Electric Meter	Condenser	Stump
Electric Outlet	Drain	Transformer
Gas Meter	Fire Hydrant	Utility Pedestal
Hose Bib	Light Pole	Utility Pole
Phone/Cable	Located Stake	Valve
Sump Drain	Mailbox	Well
Siding Drop	Pipe	+ (100.00) Existing Elevation
Vent	Post	+ 100.00 Proposed Elevation
Building Light	Landscape Light	

WISCONSIN LANDSCAPE ARCHITECTS
 RICHARD J. STROHMENGER
 LA-85 OREGON, WI
 [Signature]

SCALE: 1"=20'-0"

the bruce company
 LANDSCAPE ARCHITECTS
 LANDSCAPE CONTRACTORS
 2830 PARKER STREET
 P.O. BOX 620330
 MIDDLTON, WI 53562-0330
 TEL: (608) 836-7041
 FAX: (608) 831-6266

THE LIDO
 Lacy Rd and E Cheryl Pkwy
 Fitchburg, Wisconsin
 53711

Checked By: ----
 Drawn By: HC 8/25/25

Revised: Revised: Revised: Revised: Revised: Revised: Revised: Revised: Revised: Revised:

L100

This plan made exclusively for the project named in the title block. It remains the property of The Bruce Company of Wisconsin, Inc. and may not be reproduced in whole or part by any method without prior written consent of The Bruce Company of Wisconsin, Inc.

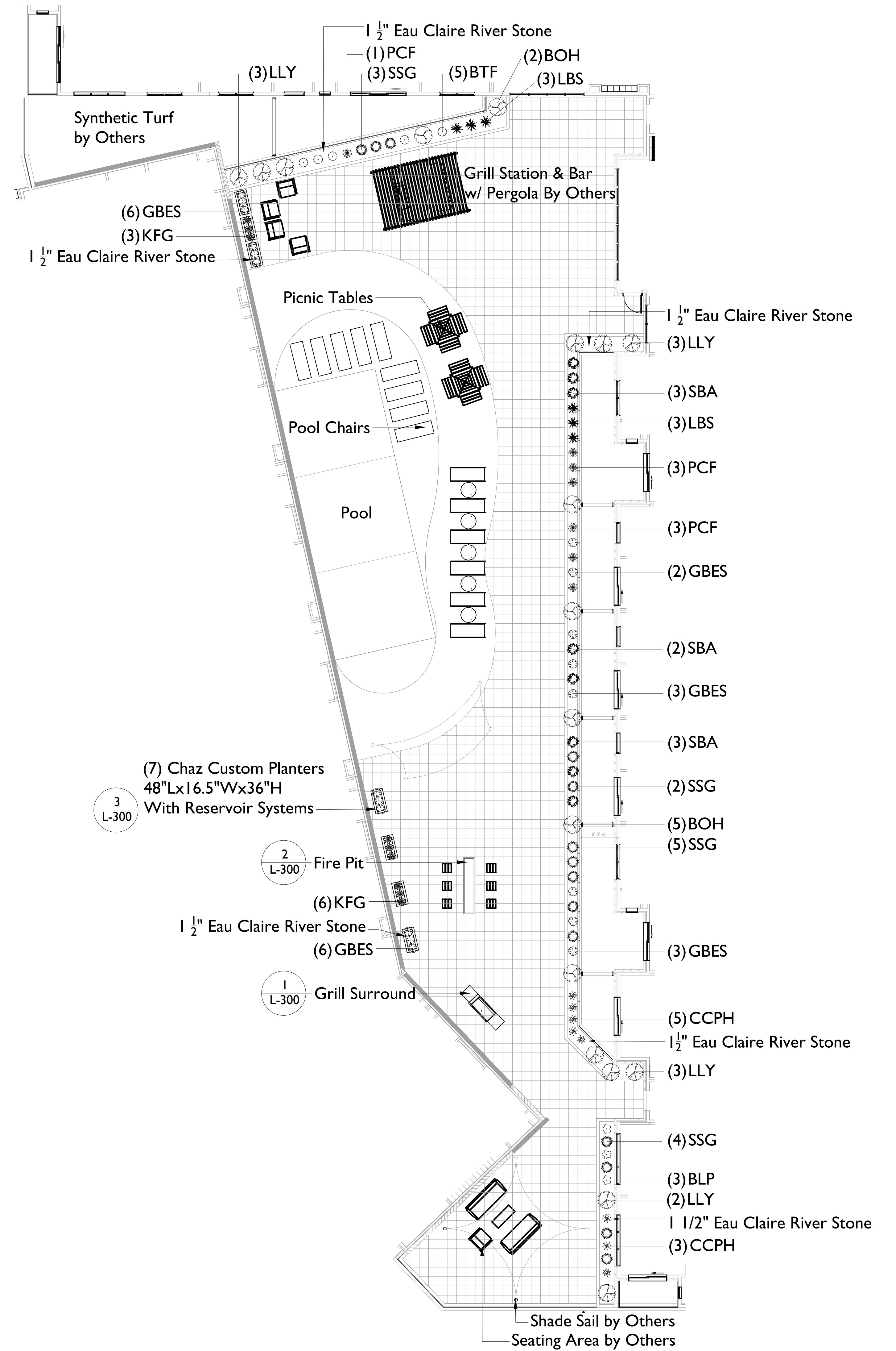
Plants List - Courtyard

Shrubs-03

Number	Abbreviation	Species	Common Name	Pot Size	Symbol
7	BOH	Hydrangea Paniculata 'ilvobo'	Bobo Hardy Hydrangea	#3 CONT.	
11	LYB	Hydrangea Paniculata 'jane'	Little Lime Hydrangea	#3 CONT.	

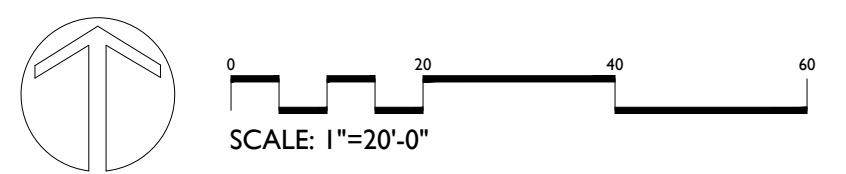
Perennials-11

Number	Abbreviation	Species	Common Name	Pot Size	Symbol
8	SBA	Allium 'summer Beauty'	Summer Beauty Onion	#1 CONT.	
9	KFG	Calamagrostis Acutiflora 'karl Foerster'	Karl Foerster's Feather Reed G	#1 CONT.	
7	PCF	Echinacea Purpurea	Purple Coneflower	#1 CONT.	
14	SSG	Panicum Virgatum 'shenandoah'	Shenandoah Switch Grass	#1 CONT.	
8	CCPH	Phlox Paniculata 'ditomfav'	Cotton Candy Phlox	#1 CONT.	
3	BLP	Phlox Paniculata Luminary 'backlight'	Backlight Garden Phlox	#1 CONT.	
20	GBES	Rudbeckia Ful Var Sullivan 'goldsturm'	Goldsturm Black-Eyed Susan	#1 CONT.	
5	BTF	Salvia 'back To The Fuchsia'	Back To The Fuchsia Sage	#1 CONT.	
6	LBS	Schizachyrium Scoparium	Little Bluestem	#1 CONT.	



SYMBOL LEGEND

Downspout	Access Cover	Satellite Dish
Electric Meter	Condenser	Stump
Electric Outlet	Drain	Transformer
Gas Meter	Fire Hydrant	Utility Pedestal
Hose Bib	Light Pole	Utility Pole
Phone/Cable	Located Stake	Valve
Sump Drain	Mailbox	Well
Siding Drop	Pipe	+ (100.00) Existing Elevation
Vent	Post	+ 100.00 Proposed Elevation
Building Light	Landscape Light	

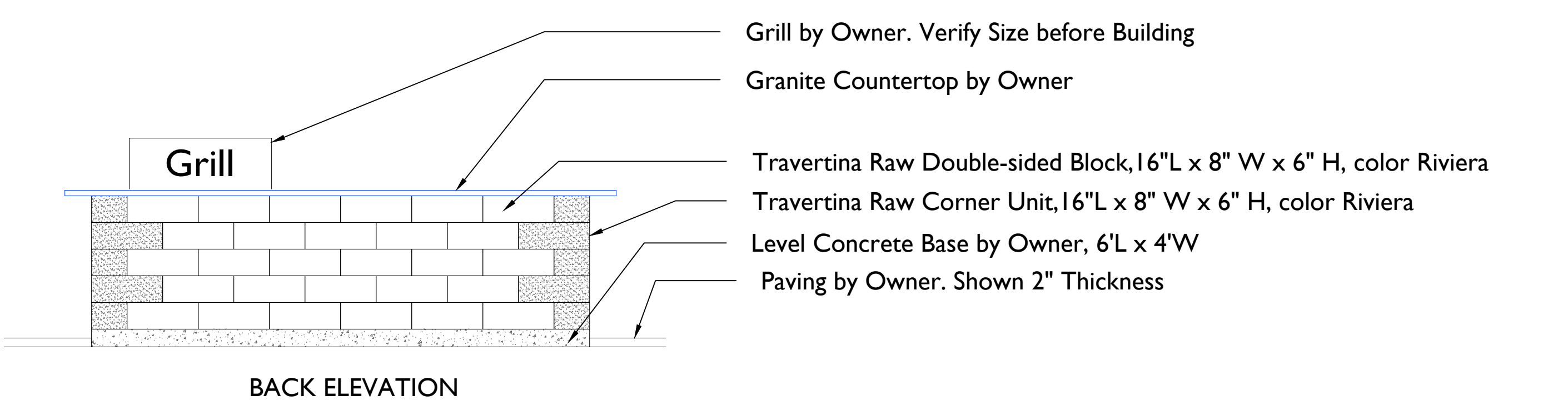


Checked By: ----
 Drawn By: HC 8/25/25

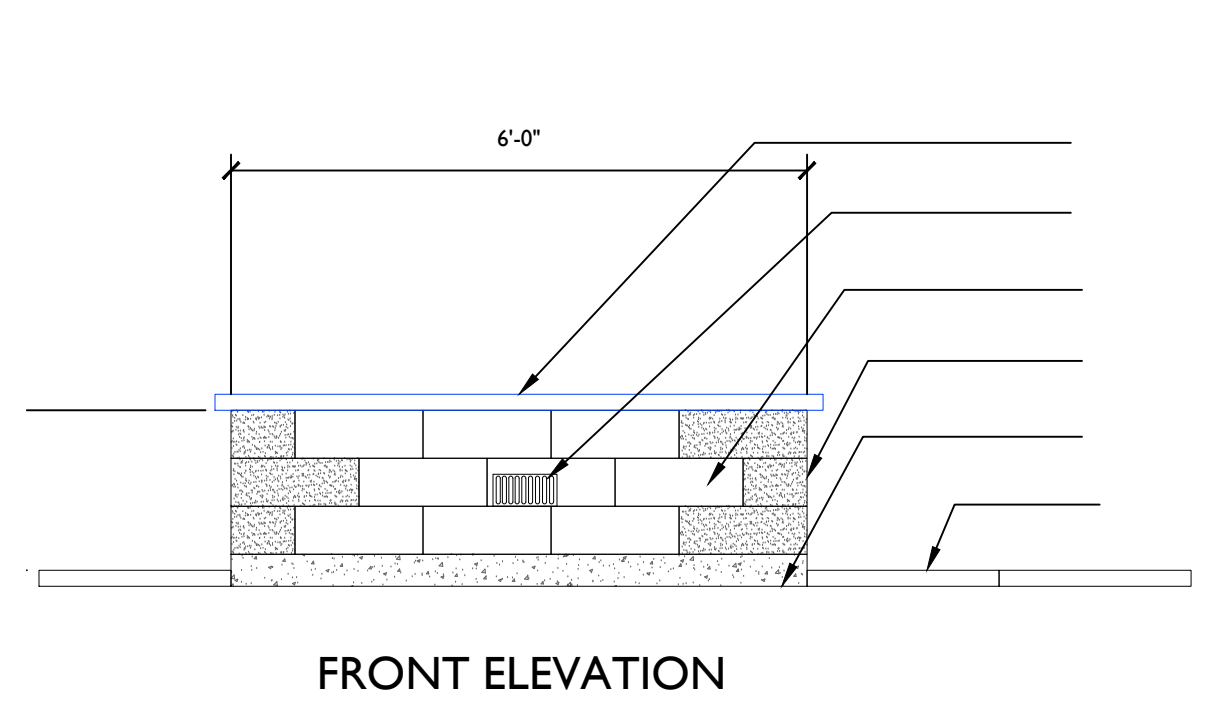
Revised:
 Revised:
 Revised:
 Revised:
 Revised:
 Revised:
 Revised:
 Revised:

L200

This plan made exclusively for the particular site shown. It remains the property of The Bruce Company of Wisconsin, Inc. and may not be reproduced by any means in whole or part by any method without prior written consent of The Bruce Company of Wisconsin, Inc.

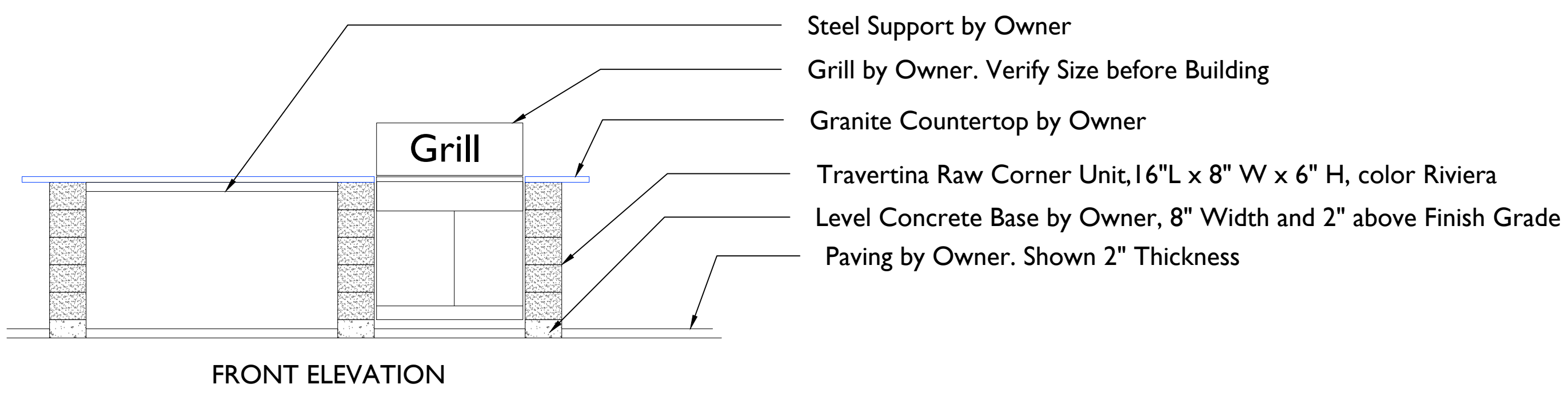


BACK ELEVATION

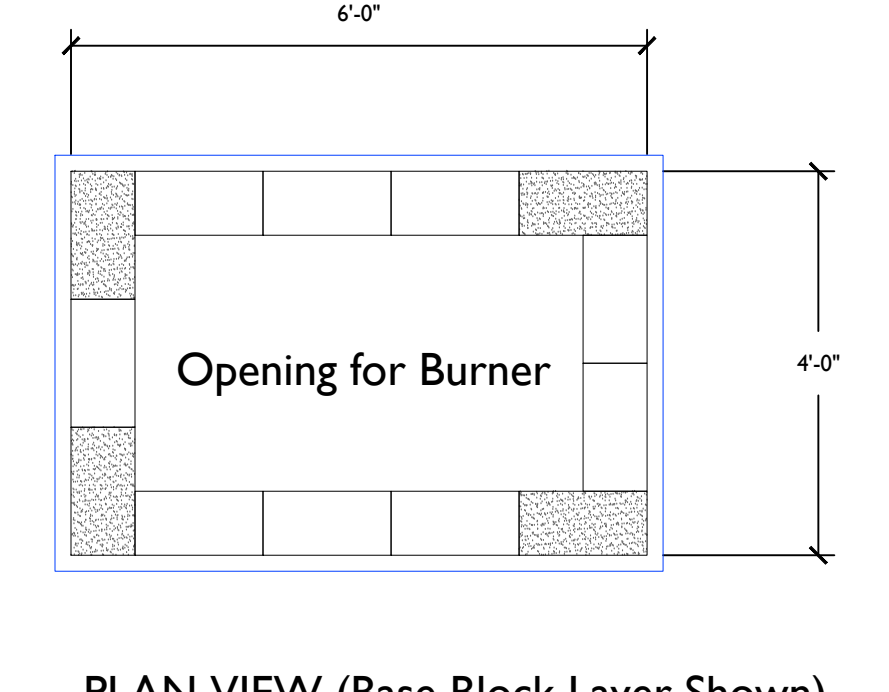


FRONT ELEVATION

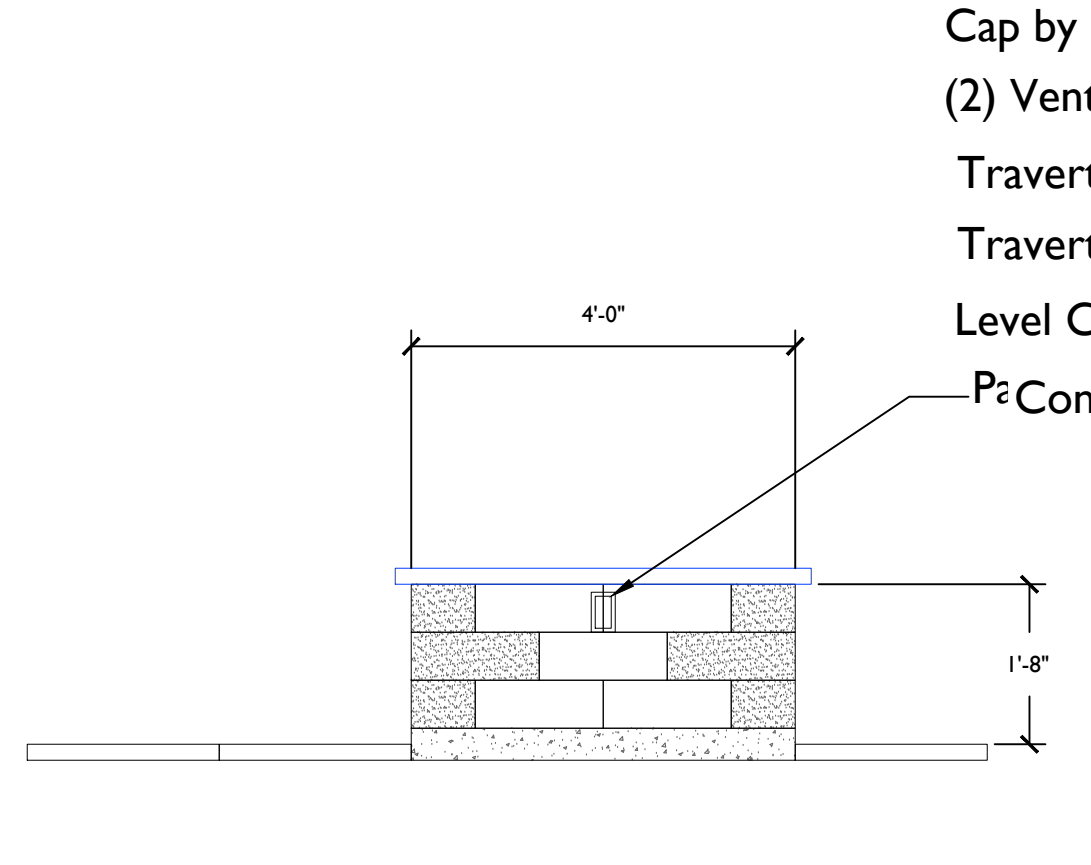
Note: Also by Owner are Spark Arrester, Burner and Accessories



FRONT ELEVATION



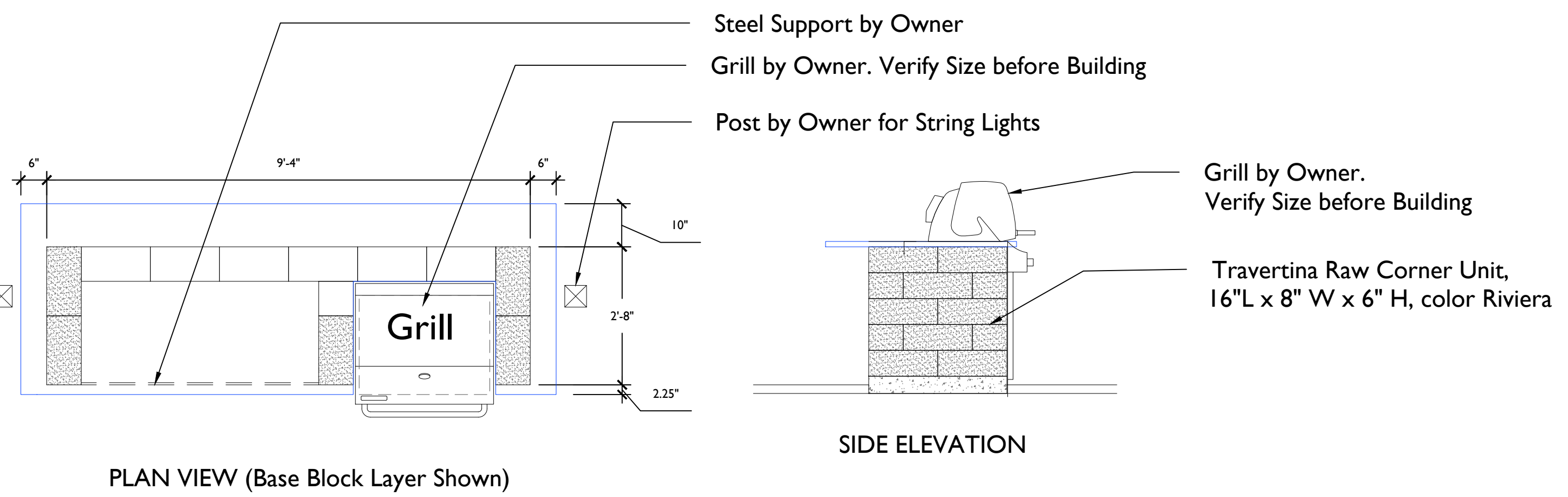
PLAN VIEW (Base Block Layer Shown)



SIDE ELEVATION

Cap by Owner. Shown 2" Thickness
(2) Vents on Opposite Sides. Provided by Owner
Travertina Raw Double-sided Block, 16"L x 8" W x 6" H, color Riviera
Travertina Raw Corner Unit, 16"L x 8" W x 6" H, color Riviera
Level Concrete Base by Owner, 6'L x 4'W, Top to be 2" above Finish Grade
P Control Box by Owner 2" Thickness

2 FIRE PIT SURROUND
L-300
1/4" = 1'-0"



PLAN VIEW (Base Block Layer Shown)

SIDE ELEVATION

1 GRILL SURROUND
L-300
1/4" = 1'-0"



GRILL SURROUND



FIRE PIT

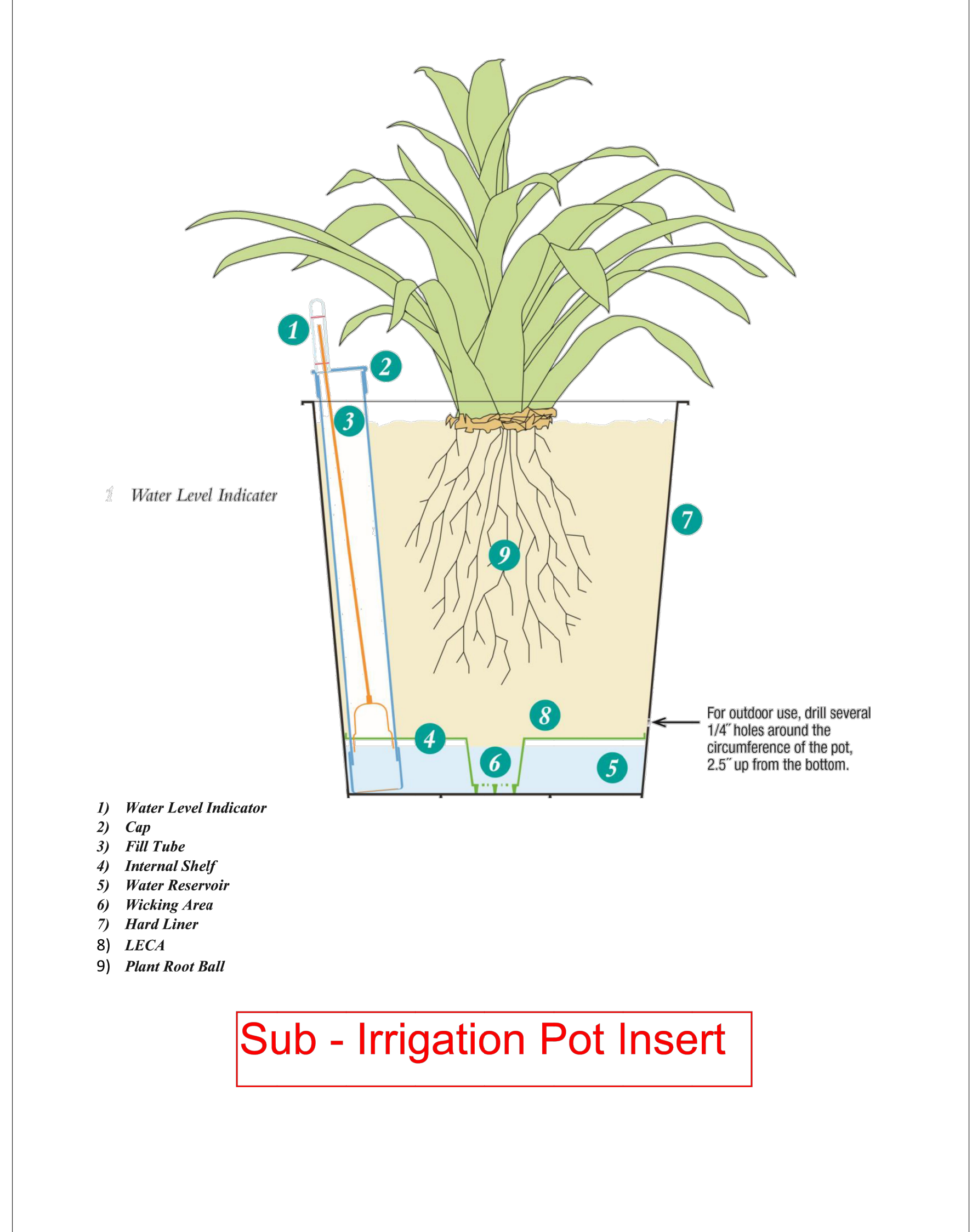
DAWN Enterprises
Specification Sheet
Chaz Series Fiberglass Planters—Round, Square or Rectangular

Height 36 inch
Length 48 inch
Width 16.5 inch
Color Charcoal PD 19

Specifications:

- Dimensions: Varies but toe kick typically 2" x 2" unless otherwise specified
- Weight: Varies by size
- Materials: Constructed of glass fiber reinforced impregnated with a polyester resin
- Construction: Products are molded construction consisting of chopped fiberglass strands, impregnated with a thermosetting resin, constructed into one piece. All exterior surfaces have a homogenized polyester coating of uniform color. The finish is impervious to all common stains and solvents. The surface thickness shall be 5/16 thick or greater. Gussets will be provided as needed for strength and structure.
- Color/Finish Options: Reference color/finish sheet.
- Additional Options: Drain holes available **upon request only**. (Manufacturer recommends drain holes for any planters that will be used outside in freezing climates to avoid cracking.)

275 Progress Drive, Suite B, Manchester, CT 06042 www.godawn.com



3 RESERVOIR for CHAZ PLANTERS
L-300



CHAZ PLANTERS

3 CHAZ PLANTER
L-300

THE LIDO
Lacy Rd and E Cheryl Pkwy
Fitchburg, Wisconsin
53711

Checked By: ---
Drawn By: HC 8/25/25

Revised:
Revised:
Revised:
Revised:
Revised:
Revised:
Revised:

L300

This plan made exclusively for the project named in the title block. It remains the property of The Bruce Company of Wisconsin, Inc. and may not be reproduced by any means in whole or part by any method without prior written consent of The Bruce Company of Wisconsin, Inc.

EXTERIOR ELEVATION NOTES AND KEY	
1.	COORDINATE WITH ARCHITECT THE LOCATION OF ALL MEP-RELATED PENETRATIONS OF THE EXTERIOR ENVELOPE.
2.	COORDINATE WITH ARCHITECT THE LOCATION OF ALL EXTERIOR MATERIAL PANEL JOINTS, CONTROL JOINTS, AND EXPANSION JOINTS. GC SHALL INCLUDE DIMENSIONED JOINT LOCATIONS AS PART OF SHOP DRAWINGS.
3.	EXTERIOR MATERIALS TO BE BID AND INSTALLED AS SHOWN IN DRAWINGS WITH REGARDS TO SIZE, LOCATION, AND COLOR.

EXTERIOR MATERIALS SCHEDULE							
MARK	DESCRIPTION	MANUFACTURER	TYPE / STYLE	DIMENSIONS	COLOR	NOTES	
1	ALUMINUM STOREFRONT SYSTEM	KAWNEER - OR EQUAL	PREFINISHED ALUMINUM		BLACK		
2	ALUMINUM STOREFRONT ENTRANCE	KAWNEER - OR EQUAL	PREFINISHED ALUMINUM		BLACK		
3	VINYL WINDOWS	ANDERSEN WINDOWS & DOORS	TBD	SEE WINDOW SCHEDULE	BLACK		
4	FIXED VINYL WINDOWS	ANDERSEN WINDOWS & DOORS	TBD	SEE WINDOW SCHEDULE	BLACK		
5	VINYL SLIDING PATIO DOORS	ANDERSEN WINDOWS & DOORS	TBD	SEE WINDOW SCHEDULE	BLACK		
6	VINYL LITE ENTRANCE DOOR	ANDERSEN WINDOWS & DOORS	TBD	SEE DOOR SCHEDULE	BLACK		
7	STEEL ENTRANCE DOOR	TBD	TBD	SEE DOOR SCHEDULE	MATCH ADJACENT CLADDING		
8	OVERHEAD PANEL DOOR	TBD	TBD	SEE DOOR SCHEDULE	TBD		FROST GLASS AT DOOR
9	MASONRY LIGHT	TBD	TBD	NORMAN	PACIFIC PEARL		
10	MASONRY DARK	TBD	TBD	KING	WINTER FIELD		
11	FIBER CEMENT LAP SIDING 1	JAMES HARDIE	PLANK LAP SIDING	7' EXPOSURE	WOODTONE RUSTIC SERIES - SAND CASTLE		
12	FIBER CEMENT 1 - SIDING 2	JAMES HARDIE	ARTISAN SQUARE CHANNEL SIDING		MONTEREY TAUPÉ		
13	FIBER CEMENT PANEL 1	JAMES HARDIE	PANEL SIDING - SMOOTH FINISH	4' x 10' MAX	ARCTIC WHITE		SEE EXTERIOR ELEVATIONS FOR REVEAL LOCATIONS
14	FIBER CEMENT PANEL 2	JAMES HARDIE	PANEL SIDING - SMOOTH FINISH	4' x 10' MAX	ARCTIC WHITE		SEE EXTERIOR ELEVATIONS FOR REVEAL LOCATIONS
15	HPL PANEL	TRESPA	PANEL - MATTE FINISH	7' x 12' MAX	METEON WOOD DECORS - WESTERN RED CEDAR NW81		SEE EXTERIOR ELEVATIONS FOR REVEAL LOCATIONS
16	FASCA LIGHT	JAMES HARDIE	FIBER CEMENT TRIM - SMOOTH FINISH	SEE DETAILS	ARCTIC WHITE		
17	FASCA DARK	JAMES HARDIE	FIBER CEMENT TRIM - SMOOTH FINISH	SEE DETAILS	MIDNIGHT BLACK		
18	PRECAST BAND	TBD	TBD	SEE PRECAST PROFILES	TBD		
19	PRECAST SILL LUNTEL	TBD	TBD	SEE PRECAST PROFILES	MATCH ADJACENT MASONRY		
20	SOLDER COURSE LUNTEL	TBD	TBD	KING	WINTER FIELD		
21	METAL CORNING GRAVEL STOP	TBD	PREFINISHED ALUMINUM	SEE PLANS AND DETAILS	MATCH ADJACENT CLADDING		
22	WALK UP RAILING	TBD	POWDER COATED ALUMINUM	SEE PLANS	TBD		
23	CABLE BALCONY RAILING	TBD	POWDER COATED ALUMINUM	SEE PLANS	TBD		
24	GLASS COURTYARD POOL RAILING	TBD	TBD	SEE PLANS	TBD		
25	MESH PATIO RAILING	TBD	POWDER COATED ALUMINUM	SEE PLANS	TBD		
26	PREFABRICATED METAL HUNG BALCONY	TBD	TBD	SEE PLANS AND DETAILS	TBD		
27	PREFABRICATED METAL ENTRANCE CANOPY	TBD	TBD	SEE PLANS AND DETAILS	TBD		
28	SIGNAGE	TBD	TBD	TBD	TBD		
29	EXTERIOR UNIT ENTRY LIGHT	MODERN FORMS	MIDNIGHT LIGHT FIXTURE	26"	TBD		
30	PREFINISHED MECHANICAL LOUVER	TBD	EXTRUDED ALUMINUM	TBD	PAINT TO MATCH ADJACENT MATERIALS		
31	RESIDENTIAL HVAC LOUVER / GRILLE	TBD	EXTRUDED ALUMINUM	TBD	PAINT TO MATCH ADJACENT MATERIALS		
32	ART PANEL	TBD	TBD	TBD	TBD		
33	PRIVACY WALL	TBD	TBD	SEE PLANS AND DETAILS	TBD		



JLA PROJECT NUMBER: W24-1219

THE LIDO - AVANTE PROPERTIES
INTERNAL PROGRESS SET

PROGRESS DOCUMENTS
These documents reflect progress and intent and may be subject to change, including additional detail. These are not final construction documents and should not be used for final bidding or construction-related purposes.

The seal & signature by the Architect of Record for this sheet is affixed to Sheet C001, which identifies this sheet as part of the sealed & signed document set in the set's index list.

DATE OF ISSUANCE: 10/03/2025

REVISION SCHEDULE		
Mark	Description	Date

SHEET TITLE
EXTERIOR ELEVATIONS

SHEET NUMBER
A200

EXTERIOR ELEVATION NOTES AND KEY	
1.	COORDINATE WITH ARCHITECT THE LOCATION OF ALL MEP-RELATED PENETRATIONS OF THE EXTERIOR ENVELOPE.
2.	COORDINATE WITH ARCHITECT THE LOCATION OF ALL EXTERIOR MATERIAL PANEL JOINTS, CONTROL JOINTS, AND EXPANSION JOINTS. GC SHALL INCLUDE DIMENSIONED JOINT LOCATIONS AS PART OF SHOP DRAWINGS.
3.	EXTERIOR MATERIALS TO BE BID AND INSTALLED AS SHOWN IN DRAWINGS WITH REGARDS TO SIZE, LOCATION, AND COLOR.

EXTERIOR MATERIALS SCHEDULE							
MARK	DESCRIPTION	MANUFACTURER	TYPE / STYLE	DIMENSIONS	COLOR	NOTES	
1	ALUMINUM STOREFRONT SYSTEM	KAWNEER - OR EQUAL	PREFINISHED ALUMINUM		BLACK		
2	ALUMINUM STOREFRONT ENTRANCE	KAWNEER - OR EQUAL	PREFINISHED ALUMINUM		BLACK		
3	VINYL WINDOWS	ANDERSEN WINDOWS & DOORS	TBD	SEE WINDOW SCHEDULE	BLACK		
4	FIXED VINYL WINDOWS	ANDERSEN WINDOWS & DOORS	TBD	SEE WINDOW SCHEDULE	BLACK		
5	VINYL SLIDING PATIO DOORS	ANDERSEN WINDOWS & DOORS	TBD	SEE WINDOW SCHEDULE	BLACK		
6	VINYL LIFT ENTRANCE DOOR	ANDERSEN WINDOWS & DOORS	TBD	SEE DOOR SCHEDULE	BLACK	FROST GLASS AT DOOR	
7	STEEL ENTRANCE DOOR	TBD	TBD	SEE DOOR SCHEDULE	MATCH ADJACENT CLADDING		
8	OVERHEAD PANEL DOOR	TBD	TBD	SEE DOOR SCHEDULE	TBD		
9	MASONRY LIGHT	TBD	TBD	NORMAN	PACIFIC PEARL		
10	MASONRY DARK	TBD	TBD	KING	WINTER FIELD		
11	FIBER CEMENT LAP SIDING 1	JAMES HARDIE	PLANK LAP SIDING	7' EXPOSURE	WOODSTONE RUSTIC SERIES - SAND CASTLE		
12	FIBER CEMENT SIDING 2	JAMES HARDIE	ARTISAN SQUARE CHANNEL SIDING		MONTEREY TAUPÉ		
13	FIBER CEMENT PANEL 1	JAMES HARDIE	PANEL SIDING - SMOOTH FINISH	4' x 10' MAX	ARCTIC WHITE	SEE EXTERIOR ELEVATIONS FOR REVEAL LOCATIONS	
14	FIBER CEMENT PANEL 2	JAMES HARDIE	PANEL SIDING - SMOOTH FINISH	4' x 10' MAX	ARCTIC WHITE	SEE EXTERIOR ELEVATIONS FOR REVEAL LOCATIONS	
15	TRUSPA PANEL	TRESPA	PANEL - MATTE FINISH	7' x 14' MAX	METEON WOOD DECORS - WESTERN RED CEDAR NW01	SEE EXTERIOR ELEVATIONS FOR REVEAL LOCATIONS	
16	FASCIA LIGHT	JAMES HARDIE	FIBER CEMENT TRIM - SMOOTH FINISH	SEE DETAILS	ARCTIC WHITE		
17	FASCIA DARK	JAMES HARDIE	FIBER CEMENT TRIM - SMOOTH FINISH	SEE DETAILS	MIDNIGHT BLACK		
18	PRECAST BAND	TBD	TBD	SEE PRECAST PROFILES	TBD		
19	PRECAST SILL LINTEL	TBD	TBD	SEE PRECAST PROFILES	MATCH ADJACENT MASONRY		
20	SOLDER COURSE LINTEL	TBD	TBD	KING	WINTER FIELD		
21	METAL CORNING GRAVEL STOP	TBD	PREFINISHED ALUMINUM	SEE PLANS AND DETAILS	MATCH ADJACENT CLADDING		
22	WALK UP RAILING	TBD	POWDER COATED ALUMINUM	SEE PLANS	TBD		
23	CABLE BALCONY RAILING	TBD	POWDER COATED ALUMINUM	SEE PLANS	TBD		
24	GLASS COURTYARD POOL RAILING	TRESPA	TBD	SEE PLANS	TBD		
25	MESH PATIO RAILING	TBD	POWDER COATED ALUMINUM	SEE PLANS	TBD		
26	PREFABRICATED METAL HUNG BALCONY	TBD	TBD	SEE PLANS AND DETAILS	TBD		
27	PREFABRICATED METAL ENTRANCE CANOPY	TBD	TBD	SEE PLANS AND DETAILS	TBD		
28	SIGNAGE	TBD	TBD	TBD	TBD		
29	EXTERIOR ENTRY LIGHT	MODERN FORMS	MIDNIGHT LIGHT FIXTURE	26"	TBD		
30	PREFINISHED MECHANICAL LOUVER	TBD	EXTRUDED ALUMINUM	TBD	PAINT TO MATCH ADJACENT MATERIALS		
31	RESIDENTIAL HVAC LOUVER / GRILLE	TBD	EXTRUDED ALUMINUM	TBD	PAINT TO MATCH ADJACENT MATERIALS		
32	ART PANEL	TBD	TBD	TBD	TBD		
33	PRIVACY WALL	TBD	TBD	SEE PLANS AND DETAILS	TBD		



JLA
ARCHITECTS
MADISON | MILWAUKEE | DENVER
JLA-AP.COM

JLA PROJECT NUMBER: W24-1219

THE LIDO - AVANTE
PROPERTIES
INTERNAL PROGRESS SET

PROGRESS DOCUMENTS

These documents reflect progress and intent and may be subject to change, including additional detail. These are not final construction documents and should not be used for final bidding or construction-related purposes.

The seal & signature by the Architect of Record for this sheet is affixed to Sheet C001, which identifies this sheet as part of the sealed & signed document set in the set's index list.

DATE OF ISSUANCE: 10/03/2025

REVISION SCHEDULE		
Mark	Description	Date

SHEET TITLE

EXTERIOR
ELEVATIONS

SHEET NUMBER

A201

EXTERIOR ELEVATION NOTES AND KEY

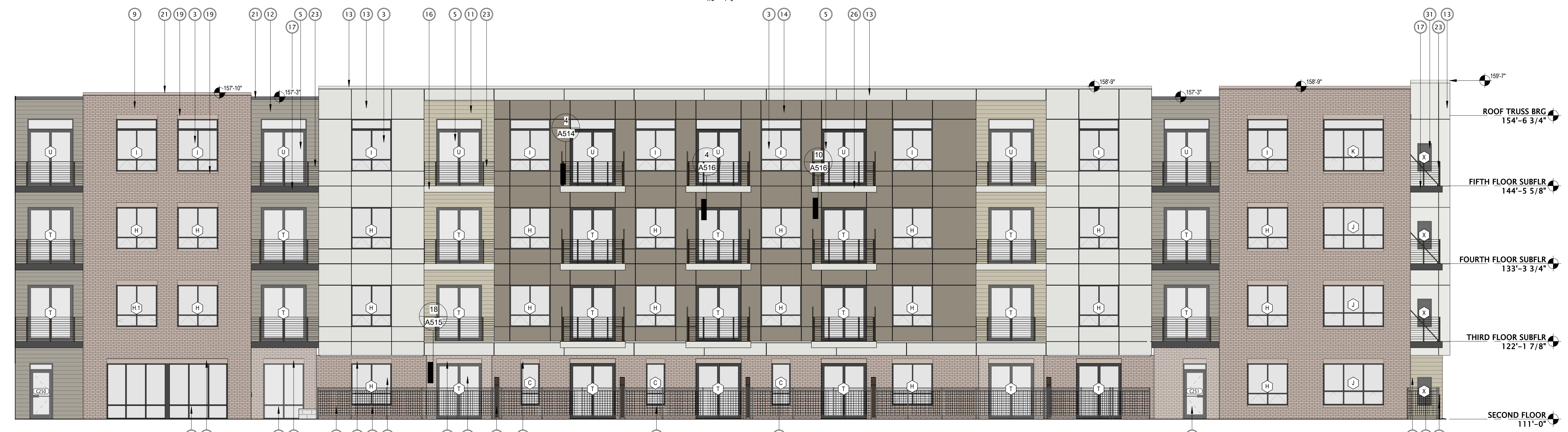
- COORDINATE WITH ARCHITECT THE LOCATION OF ALL MEP-RELATED PENETRATIONS OF THE EXTERIOR ENVELOPE.
- COORDINATE WITH ARCHITECT THE LOCATION OF ALL EXTERIOR MATERIAL PANEL JOINTS, CONTROL JOINTS, AND EXPANSION JOINTS. GC SHALL INCLUDE DIMENSIONED JOINT LOCATIONS AS PART OF SHOP DRAWINGS.
- EXTERIOR MATERIALS TO BE BID AND INSTALLED AS SHOWN IN DRAWINGS WITH REGARDS TO SIZE, LOCATION, AND COLOR.

EXTERIOR MATERIALS SCHEDULE

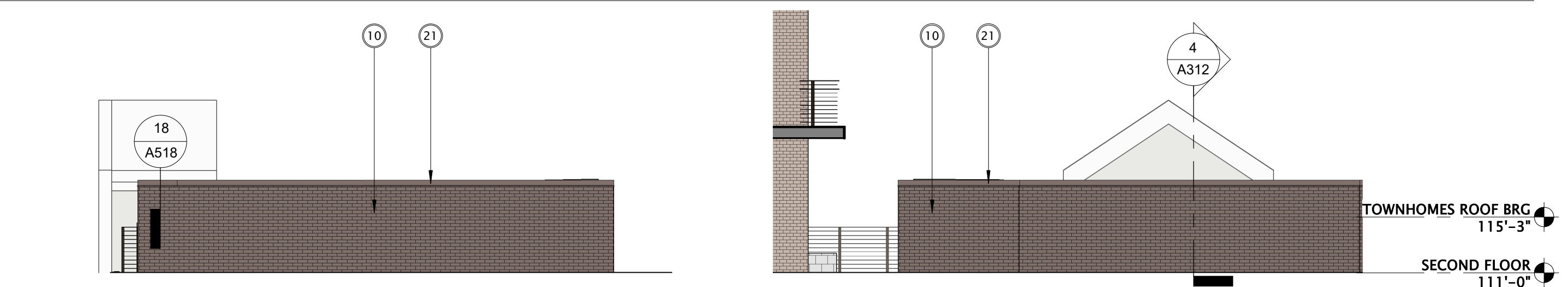
MARK	DESCRIPTION	MANUFACTURER	TYPE / STYLE	DIMENSIONS	COLOR	NOTES
1	ALUMINUM STOREFRONT SYSTEM	KAWNEER - OR EQUAL	PREFINISHED ALUMINUM		BLACK	
2	ALUMINUM STOREFRONT ENTRANCE	KAWNEER - OR EQUAL	PREFINISHED ALUMINUM		BLACK	
3	VINYL WINDOWS	ANDERSEN WINDOWS & DOORS	TBD	SEE WINDOW SCHEDULE	BLACK	
4	FIXED VINYL WINDOWS	ANDERSEN WINDOWS & DOORS	TBD	SEE WINDOW SCHEDULE	BLACK	
5	VINYL SLIDING PATIO DOORS	ANDERSEN WINDOWS & DOORS	TBD	SEE WINDOW SCHEDULE	BLACK	
6	VINYL LITE ENTRANCE DOOR	ANDERSEN WINDOWS & DOORS	TBD	SEE DOOR SCHEDULE	BLACK	FROST GLASS AT DOOR
7	STEEL ENTRANCE DOOR	TBD	TBD	SEE DOOR SCHEDULE	MATCH ADJACENT CLADDING	
8	OVERHEAD PANEL DOOR	TBD	TBD	SEE DOOR SCHEDULE	TBD	
9	MASONRY LIGHT	TBD	TBD	NORMAN	PACIFIC PEARL	
10	MASONRY DARK	TBD	TBD	KING	WINTER FIELD	
11	FIBER CEMENT LAP SIDING 1	JAMES HARDIE	PLANK LAP SIDING	7' EXPOSURE	WOODSTONE RUSTIC SERIES - SAND CASTLE	
12	FIBER CEMENT SIDING 2	JAMES HARDIE	ARTISAN SQUARE CHANNEL SIDING		MONTREY TAUPÉ	
13	FIBER CEMENT PANEL 1	JAMES HARDIE	PANEL SIDING - SMOOTH FINISH	4' x 10' MAX	ARCTIC WHITE	SEE EXTERIOR ELEVATIONS FOR REVEAL LOCATIONS
14	FIBER CEMENT PANEL 2	JAMES HARDIE	PANEL SIDING - SMOOTH FINISH	4' x 10' MAX	ARCTIC WHITE	SEE EXTERIOR ELEVATIONS FOR REVEAL LOCATIONS
15	SPK PANEL	TRESPA	PANEL - MATTE FINISH	7' x 10' MAX	METEON WOOD DECORS - WESTERN RED CEDAR NW31	SEE EXTERIOR ELEVATIONS FOR REVEAL LOCATIONS
16	FASCIA LIGHT	JAMES HARDIE	FIBER CEMENT TRIM - SMOOTH FINISH	SEE DETAILS	ARCTIC WHITE	
17	FASCIA DARK	JAMES HARDIE	FIBER CEMENT TRIM - SMOOTH FINISH	SEE DETAILS	MIDNIGHT BLACK	
18	PRECAST BAND	TBD	TBD	SEE PRECAST PROFILES	TBD	
19	PRECAST SILL LINTEL	TBD	TBD	SEE PRECAST PROFILES	MATCH ADJACENT MASONRY	
20	SOLDER COURSE LINTEL	TBD	TBD	KING	WINTER FIELD	
21	METAL CORNING GRAVEL STOP	TBD	PREFINISHED ALUMINUM	SEE PLANS AND DETAILS	MATCH ADJACENT CLADDING	
22	WALK UP RAILING	TBD	POWDER COATED ALUMINUM	SEE PLANS	TBD	
23	CABLE BALCONY RAILING	TBD	POWDER COATED ALUMINUM	SEE PLANS	TBD	
24	GLASS COURTYARD POOL RAILING	TBD	TBD	SEE PLANS	TBD	
25	MESH PATIO RAILING	TBD	POWDER COATED ALUMINUM	SEE PLANS	TBD	
26	PREFABRICATED METAL HUNG BALCONY	TBD	TBD	SEE PLANS AND DETAILS	TBD	
27	PREFABRICATED METAL ENTRANCE CANOPY	TBD	TBD	SEE PLANS AND DETAILS	TBD	
28	SIGNAGE	TBD	TBD	TBD	TBD	
29	EXTERIOR UNIT ENTRY LIGHT	MODERN FORMS	MIDNIGHT LIGHT FIXTURE	26"	TBD	
30	PREFINISHED MECHANICAL LOUVER	TBD	EXTRUDED ALUMINUM	TBD	PAINT TO MATCH ADJACENT MATERIALS	
31	RESIDENTIAL HVAC LOUVER / GRILLE	TBD	EXTRUDED ALUMINUM	TBD	PAINT TO MATCH ADJACENT MATERIALS	
32	ART PANEL	TBD	TBD	TBD	TBD	
33	PRIVACY WALL	TBD	TBD	SEE PLANS AND DETAILS	TBD	



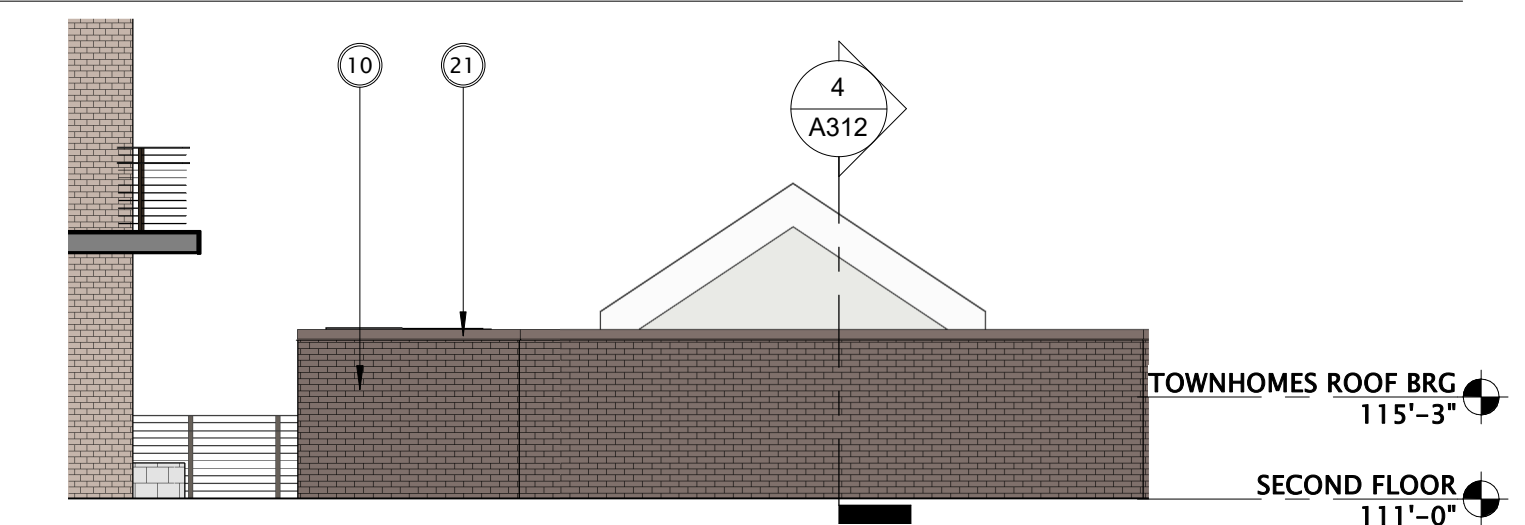
1 COURTYARD SOUTH ELEVATION
1/8" = 1'-0"



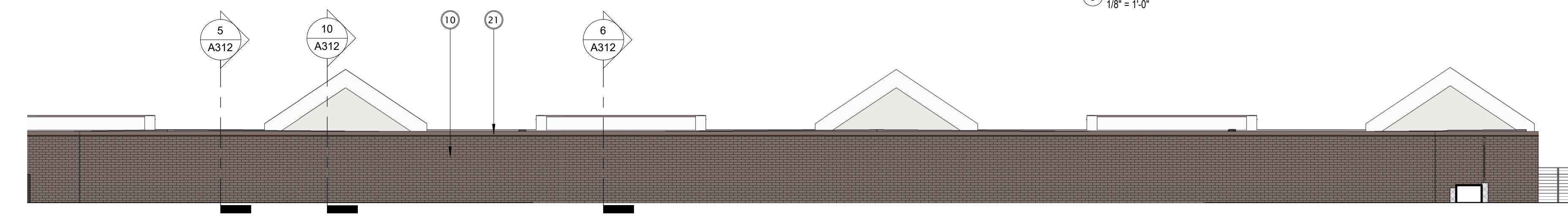
2 COURTYARD WEST ELEVATION
1/8" = 1'-0"



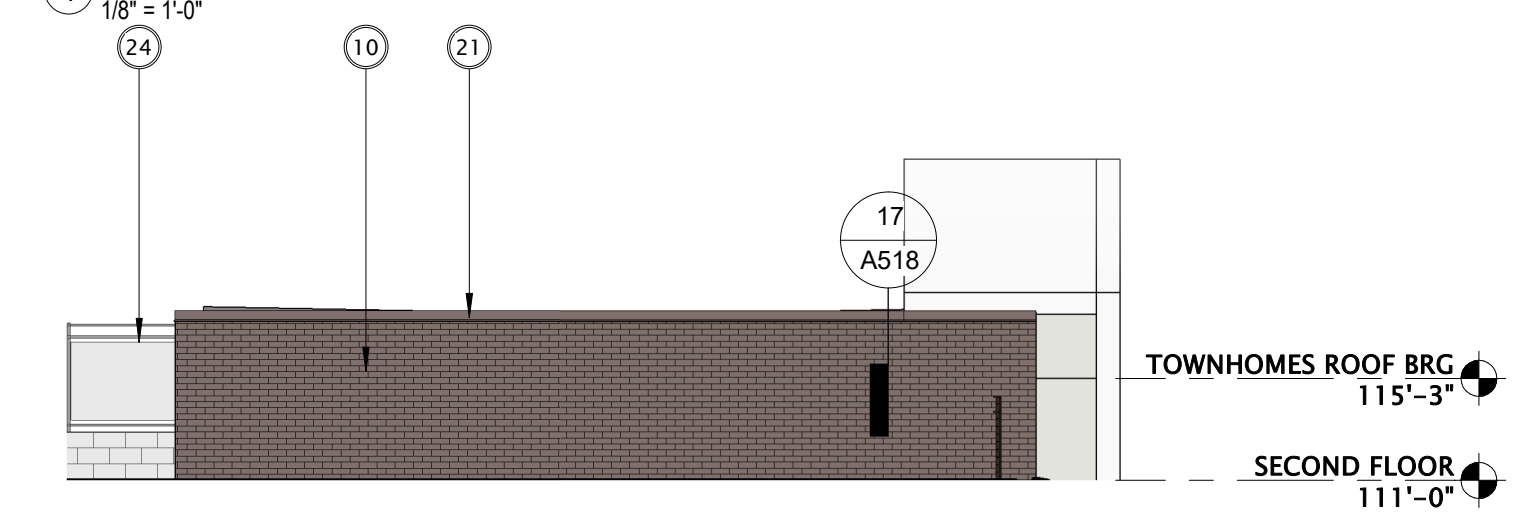
3 TOWNHOME SOUTH ELEVATION
1/8" = 1'-0"



4 TOWNHOME EAST ELEVATION 1
1/8" = 1'-0"



5 TOWNHOME EAST ELEVATION 2
1/8" = 1'-0"



6 TOWNHOME NORTH ELEVATION
1/8" = 1'-0"



JLA
ARCHITECTS
MADISON | MILWAUKEE | DENVER
JLA-AP.COM

JLA PROJECT NUMBER: W24-1219

THE LIDO - AVANTE
PROPERTIES
INTERNAL PROGRESS SET

PROGRESS DOCUMENTS

These documents reflect progress and intent and may be subject to change, including additional detail. These are not final construction documents and should not be used for final bidding or construction-related purposes.

The seal & signature by the Architect of Record for this sheet is affixed to Sheet C001, which identifies this sheet as part of the sealed & signed document set in the set's index list.

DATE OF ISSUANCE: 10/03/2025

REVISION SCHEDULE

Mark	Description	Date

SHEET TITLE

EXTERIOR
ELEVATIONS

SHEET NUMBER

A202