

### EXISTING CONDITIONS LEGEND

- GOVERNMENT CORNER
- 3/4" x 24" REBAR SET (1.5 LBS/LF)
- 1" IRON PIPE FOUND
- 1/4" REBAR FOUND
- 3/8" REBAR FOUND
- BENCHMARK
- CONTROL POINT
- POST
- SIGN
- POWER POLE W/ GUY
- TELEPHONE PEDESTAL
- DECIDUOUS TREE W/ DIA.
- CONIFEROUS TREE W/ DIA.
- ENDWALL/END OF PIPE
- SQUARE CASTED INLET
- PARCEL BOUNDARY
- SECTION LINE
- CENTERLINE
- RIGHT-OF-WAY LINE
- PROPERTY LINE
- EASEMENT LINE
- AGRICULTURAL FIELD LIMITS
- FENCE LINE
- GUARD OR SAFETY RAIL
- RETAINING WALL
- EDGE OF GRAVEL
- EDGE OF BITUMINOUS
- NATURAL GAS
- OVERHEAD ELECTRIC
- UNDERGROUND ELECTRIC
- STORM SEWER / CULVERT
- FIBER OPTIC
- EDGE OF WOODS OR BRUSH
- RAILROAD TRACKS
- BITUMINOUS PAVEMENT
- CONCRETE PAVEMENT
- GRAVEL
- TWO-TRACK DIRT PATH
- INDEX CONTOUR
- INTERMEDIATE CONTOUR
- END OF FLAGGED UTILITIES

**DIGGERS HOTLINE**  
 Dial 811 or (800)242-8511  
 www.DiggersHotline.com

NORTH

ATTENTION: ALL UTILITY LOCATIONS ARE SHOWN FROM FIELD OBSERVATION BASED UPON LOCATES AND/OR INFORMATION RECEIVED FROM OTHER SURVEYS AND VARIOUS UTILITY COMPANIES. BEFORE THE START OF ANY EXCAVATION, A COMPLETE LOCATE OF ALL UTILITIES WITHIN THE CONSTRUCTION AREA SHOULD BE COMPLETED. SOME OF THE UTILITIES ON THE FACILITY GROUNDS ARE PRIVATELY OWNED UTILITIES AND WILL NOT BE IDENTIFIED BY DIGGERS HOTLINE. IF THE OWNER IS UNABLE TO IDENTIFY THE LINES, ACQUIRE THE SERVICE OF A PRIVATE MARKING COMPANY TO IDENTIFY ALL LINES.

### SHEET LAYOUT OVERVIEW



**B W B R**  
 1 South Pinney Street, Ste. 500  
 Madison, WI 53703  
 608.629.3701  
 bwr.com

BWBR  
 Commission Number: P.2300288.00  
 Consultant:

**Kapur**  
 4654 S BILTMORE LN  
 MADISON, WI 53703  
 608.673.4400  
 KAPURINC.COM

This document may be an electronic file or may be printed from an electronic file provided to the user. It is the sole responsibility of the user to ensure that the content and quality is consistent with the content and quality of the original documents on file at BWBR.

State of Wisconsin  
 Department of Administration  
 Division of Facilities Development

FITCHBURG, WI

**TYPE 1 JUVENILE CORRECTIONAL FACILITY  
 DEPARTMENT OF CORRECTIONS  
 DANE COUNTY, WISCONSIN**

Sheet Title  
 EXISTING CONDITIONS PLAN - AREA E

Revisions:		
Item	Date	Description


NOT FOR CONSTRUCTION FOR REFERENCE ONLY

Graphic Scale: 0 15 30 45  
 DFD Project Number: 23G1L  
 Set Type: PRELIMINARY DESIGN  
 Date Issued: 09/12/2025  
 Sheet Number: C100E










1 South Pinney Street, Ste. 500  
Madison, WI 53703  
608.829.3701  
bwbr.com

---

BWBR  
Commission  
Number P.2300288.00  
Consultant

---



4654 B BILTMORE LN  
MADISON, WI 53703  
608.673.4400  
KAPURINC.COM


---

This document may be an electronic file or may be printed from an electronic file provided to the user. It is the sole responsibility of the user to ensure that the content and quality of the original documents on file at BWBR.

---


State of Wisconsin  
Department of Administration  
Division of Facilities Development

---




FITCHBURG, WI

---



Dial 811 or (800)242-8511  
www.DiggersHotline.com

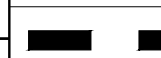
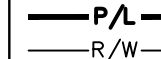
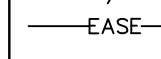
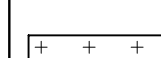
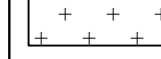
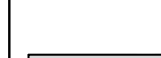




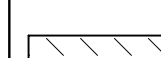
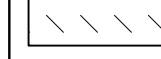
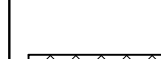


NORTH



### DEMOLITION NOTES

1. CONSULT WITH OWNER TO DETERMINE A SAFE STORAGE LOCATION OF ITEMS SPECIFICALLY CALLED OUT TO BE SALVAGED FOR OWNER REUSE. EXERCISE CARE DURING REMOVAL AND TRANSPORT TO PREVENT DAMAGE.
2. THE UNDERGROUND AND OVERHEAD UTILITY INFORMATION AS SHOWN HEREON IS BASED, IN PART, UPON INFORMATION FURNISHED BY UTILITY COMPANIES, LOCAL MUNICIPALITY, PROPERTY OWNER, AND DIGGERS HOTLINE. WHILE THIS INFORMATION IS BELIEVED TO BE RELIABLE, ITS ACCURACY AND COMPLETENESS CANNOT BE GUARANTEED NOR CERTIFIED TO.
3. GENERAL CONTRACTOR OR THEIR SUB CONTRACTORS SHALL APPLY FOR AND OBTAIN ALL THEIR REQUIRED PERMITS AND APPROVALS PRIOR TO THE START OF THEIR WORK. CONSULT WITH AND OBTAIN FROM ENGINEER COPIES OF ENGINEERING DESIGN APPROVAL PERMITS, INCLUDING BUT NOT LIMITED TO WDR, STATE OR LOCAL PLUMBING, WOOD, COUNTY, AND STORM WATER MANAGEMENT.
4. GENERAL CONTRACTOR OR THEIR SUB CONTRACTORS SHALL CONTACT DIGGERS HOTLINE TO ALLOW THEM SUFFICIENT TIME TO LOCATE EXISTING UTILITIES PRIOR TO COMMENCEMENT OF WORK.
5. GENERAL CONTRACTOR OR THEIR SUB CONTRACTORS ARE RESPONSIBLE FOR COORDINATING THEIR WORK WITH ALL OTHER CONTRACTORS.
6. GENERAL CONTRACTOR OR THEIR SUB CONTRACTORS ARE RESPONSIBLE FOR VERIFYING OWNERSHIP OF AND COORDINATING THE DEMOLITION AND / OR RELOCATION / ELEVATION ADJUSTMENT OF ALL EXISTING PUBLIC OR PRIVATE UTILITIES WITHIN THE PROJECT LIMITS THAT MAY BE AFFECTED BY TOPOGRAPHICAL CHANGES, UTILITIES, OR OTHER PROPOSED CONSTRUCTION ON THE PROJECT, INCLUDING BUT NOT LIMITED TO ELECTRICAL / FIBER OPTIC / TELEPHONE / CABLE / GAS / WATER / SANITARY / STORM DEMOLITION / RELOCATION OF THIS UTILITY WORK MUST BE IN ACCORDANCE WITH ALL STATE, FEDERAL, LOCAL, AND UTILITY OWNER REGULATIONS.
7. FOR ALL WORK, GENERAL CONTRACTOR OR THEIR SUB CONTRACTORS ARE RESPONSIBLE FOR REVIEWING BID DOCUMENTS, VERIFYING THE VERTICAL AND HORIZONTAL LOCATION OF ALL EXISTING UTILITIES WITHIN THE PROJECT LIMITS, AND INCLUDE IN THEIR CONTRACT THE RELOCATION OF SAID UTILITIES (NOTED OR NOT ON THE BID DOCUMENTS) AS NECESSARY TO PROVIDE PROPER DEPTH/CLEARANCE PER UTILITY OWNER'S REQUIREMENTS.

### KEY INDEX

-  PROJECT LIMITS
-  PROPERTY LINE
-  RIGHT OF WAY LINE
-  EASEMENT LINE
-  CASE
-  VEGETATION TO BE REMOVED & DISPOSED OF OFFSITE. IF SUITABLE FOR REUSE, TOPSOIL TO BE STOCKPILED. UNUSED & UNSUITABLE TOPSOIL TO BE REMOVED OFFSITE. TOPSOIL THICKNESS MAY VARY. REFER TO GEOTECHNICAL REPORT.
-  ASPHALT PAVEMENT & BASE MATERIAL TO BE REMOVED TO SUB-BASE & DISPOSED OF OFFSITE. PAVEMENT & BASE THICKNESS MAY VARY. REFER TO GEOTECHNICAL REPORT.
-  CONCRETE & BASE MATERIAL TO BE REMOVED TO SUB-BASE & DISPOSED OF OFFSITE. CONCRETE & BASE THICKNESS MAY VARY. REFER TO GEOTECHNICAL REPORT.
-  GRAVEL MATERIAL TO BE REMOVED & DISPOSED OF OFFSITE. IF SUITABLE FOR REUSE, GRAVEL TO BE STOCKPILED. UNUSED GRAVEL MATERIAL TO BE REMOVED OFFSITE. GRAVEL THICKNESS MAY VARY. REFER TO GEOTECHNICAL REPORT.
-  CLEAR & GRUB VEGETATION, REMOVE ROOTS & STUMPS. REMOVE & DISPOSE OF OFFSITE.
-  SAWCUT FULL DEPTH
-  TREES & STUMPS TO BE REMOVED
-  DENOTES UTILITIES TO BE ABANDONED & REMOVED.
-  CAUTION  
KNOWN UTILITY AND POTENTIAL CONFLICT EXIST
-  UTILITY STRUCTURE  
REMOVAL/ABANDONMENT

TYPE 1 JUVENILE CORRECTIONAL FACILITY  
DEPARTMENT OF CORRECTIONS  
DANE COUNTY, WISCONSIN

Sheet Title  
OVERALL SITE DEMOLITION PLAN

---

Revisions:

Item	Date	Description

---

Graphic Scale: 0 90' 180' 180'

DFD Project Number: 23G1L

Set Type: PRELIMINARY DESIGN

Date Issued: 09/12/2025

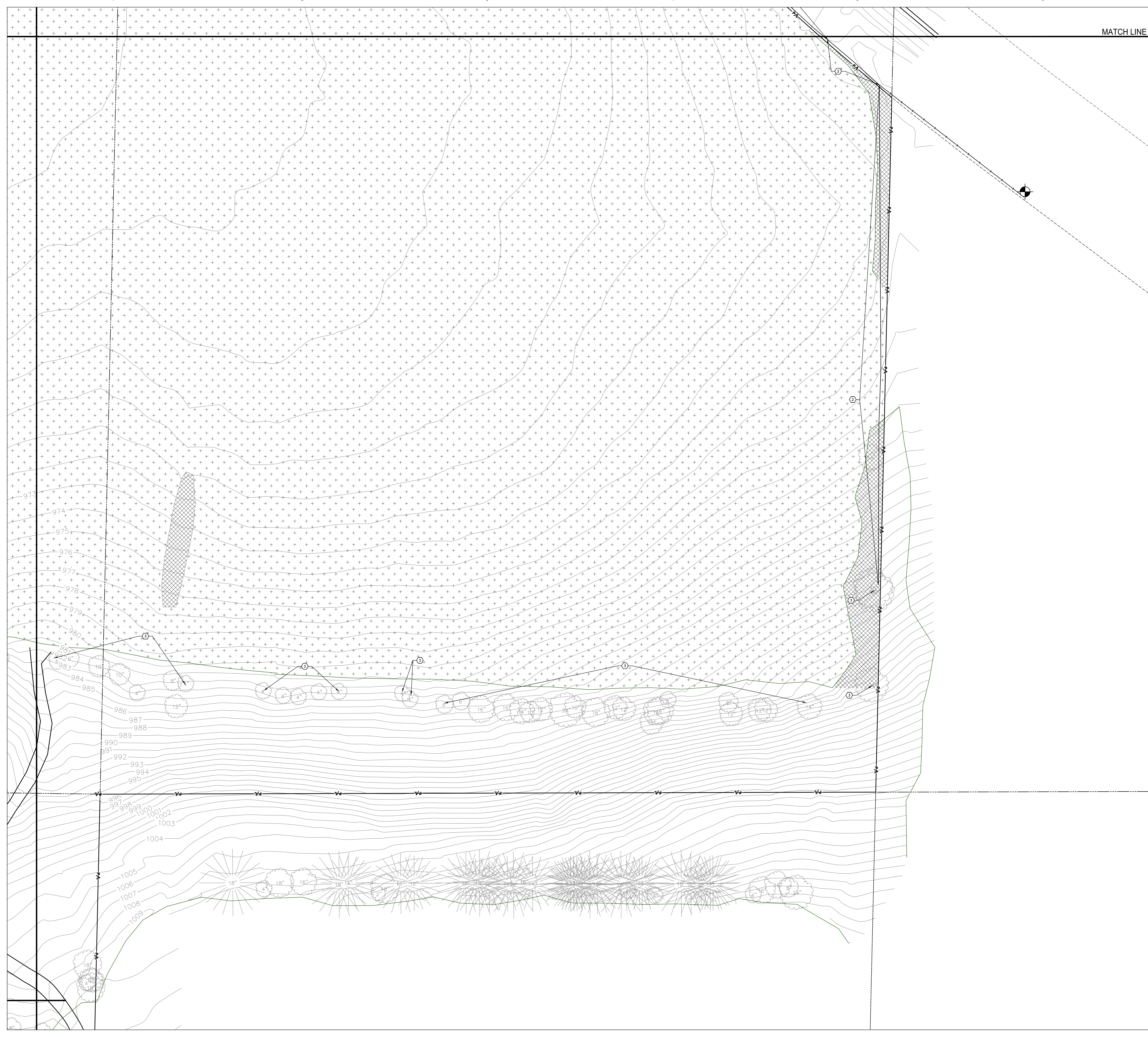
Sheet Number: C200

NOT FOR CONSTRUCTION  
FOR REFERENCE ONLY









MATCH LINE

NORTH

### DEMOLITION NOTES

- CONSULT WITH OWNER TO DETERMINE A SAFE STORAGE LOCATION OF ITEMS SPECIFICALLY CALLED OUT TO BE SALVAGED FOR OWNER REUSE. EXERCISE CARE DURING REMOVAL AND TRANSPORT TO PREVENT DAMAGE.
- THE UNDERGROUND AND OVERHEAD UTILITY INFORMATION AS SHOWN HEREON IS BASED, IN PART, UPON INFORMATION FURNISHED BY UTILITY COMPANIES, LOCAL MUNICIPALITY, PROPERTY OWNER, AND DIGGERS HOTLINE. WHILE THIS INFORMATION IS BELIEVED TO BE RELIABLE, ITS ACCURACY AND COMPLETENESS CANNOT BE GUARANTEED NOR CERTIFIED TO.
- GENERAL CONTRACTOR OR THEIR SUB CONTRACTORS SHALL APPLY FOR AND OBTAIN ALL THEIR REQUIRED PERMITS AND APPROVALS PRIOR TO THE START OF THEIR WORK. CONSULT WITH AND OBTAIN FROM ENGINEER COPIES OF ENGINEERING DESIGN APPROVAL PERMITS, INCLUDING BUT NOT LIMITED TO WDR, STATE OR LOCAL PLUMBING, WDOT, COUNTY, AND STORM WATER MANAGEMENT.
- GENERAL CONTRACTOR OR THEIR SUB CONTRACTORS SHALL CONTACT DIGGER'S HOTLINE TO ALLOW THEM SUFFICIENT TIME TO LOCATE EXISTING UTILITIES PRIOR TO COMMENCEMENT OF WORK.
- GENERAL CONTRACTOR OR THEIR SUB CONTRACTORS ARE RESPONSIBLE FOR COORDINATING THEIR WORK WITH ALL OTHER CONTRACTORS.
- GENERAL CONTRACTOR OR THEIR SUB CONTRACTORS ARE RESPONSIBLE FOR VERIFYING OWNERSHIP OF AND COORDINATING THE DEMOLITION AND / OR RELOCATION / ELEVATION ADJUSTMENT OF ALL EXISTING PUBLIC OR PRIVATE UTILITIES WITHIN THE PROJECT LIMITS THAT MAY BE AFFECTED BY TOPOGRAPHICAL CHANGES, UTILITIES, OR OTHER PROPOSED CONSTRUCTION ON THE PROJECT, INCLUDING BUT NOT LIMITED TO ELECTRICAL / FIBER / OPTIC / TELEPHONE / CABLE / GAS / WATER / SANITARY / STORM. DEMOLITION / RELOCATION OF THIS UTILITY WORK MUST BE IN ACCORDANCE WITH ALL STATE, FEDERAL, LOCAL, AND UTILITY OWNER REGULATIONS.
- FOR ALL WORK, GENERAL CONTRACTOR OR THEIR SUB CONTRACTORS ARE RESPONSIBLE FOR REVIEWING BID DOCUMENTS, VERIFYING THE VERTICAL AND HORIZONTAL LOCATION OF ALL EXISTING UTILITIES WITHIN THE PROJECT LIMITS, AND INCLUDE IN THEIR CONTRACT THE RELOCATION OF SAID UTILITIES (NOTED OR NOT ON THE BID DOCUMENTS) AS NECESSARY TO PROVIDE PROPER DEPTH/CLEARANCE PER UTILITY OWNER'S REQUIREMENTS.

### KEY INDEX

	PROJECT LIMITS
	PROPERTY LINE
	RIGHT OF WAY LINE
	EASEMENT LINE
	VEGETATION TO BE REMOVED & DISPOSED OF OFFSITE. IF SUITABLE FOR REUSE, TOPSOIL TO BE STOCKPILED. UNUSED & UNSUITABLE TOPSOIL TO BE REMOVED OFFSITE. TOPSOIL THICKNESS MAY VARY. REFER TO GEOTECHNICAL REPORT.
	ASPHALT PAVEMENT & BASE MATERIAL TO BE REMOVED TO SUB-BASE & DISPOSED OF OFFSITE. PAVEMENT & BASE THICKNESS MAY VARY. REFER TO GEOTECHNICAL REPORT.
	CONCRETE & BASE MATERIAL TO BE REMOVED TO SUB-BASE & DISPOSED OF OFFSITE. CONCRETE & BASE THICKNESS MAY VARY. REFER TO GEOTECHNICAL REPORT.
	GRAVEL MATERIAL TO BE REMOVED & DISPOSED OF OFFSITE. IF SUITABLE FOR REUSE, GRAVEL TO BE STOCKPILED. UNUSED GRAVEL MATERIAL TO BE REMOVED OFFSITE. GRAVEL THICKNESS MAY VARY. REFER TO GEOTECHNICAL REPORT.
	CLEAR & GRUB VEGETATION. REMOVE ROOTS & STUMPS. REMOVE & DISPOSE OF OFFSITE.
	SAWCUT FULL DEPTH
	TREES & STUMPS TO BE REMOVED
	DENOTES UTILITIES TO BE ABANDONED & REMOVED.
	KNOWN UTILITY AND POTENTIAL CONFLICT EXIST
	UTILITY STRUCTURE REMOVAL/ABANDONMENT
	SAWCUT APPROXIMATELY 2' OF ASPHALT PAVEMENT OFF THE EDGE OF THE ROADWAY TO PROVIDE A SMOOTH EDGE FOR INSTALLATION OF NEW PAVEMENT.
	REMOVE & DISPOSE OF EXISTING CHAIN-LINK FENCE, INCLUDING POSTS & FOOTINGS.
	EXISTING TREE TO REMAIN. CONTRACTOR TO PROTECT THROUGHOUT CONSTRUCTION.
	REMOVE & RELOCATE EXISTING PEDESTAL. COORDINATE RELOCATION WITH EXISTING UTILITY OWNER.

1 South Providence Street, Ste. 500  
Madison, WI 53703  
608.829.3701  
bwbr.com

BWBR  
Commission Number: P.2300288.00

4654 S BILL MADRE LN  
MADISON, WI 53703  
608.873.4400  
KAPURINC.COM

This document may be an electronic file or may be printed from an electronic file provided to the user. It is the sole responsibility of the user to ensure that the content and quality is consistent with the content and quality of the original documents on file at BWBR.

State of Wisconsin  
Department of Administration  
Division of Facilities Development

FITCHBURG, WI

## TYPE 1 JUVENILE CORRECTIONAL FACILITY DEPARTMENT OF CORRECTIONS DANE COUNTY, WISCONSIN

Sheet Title  
SITE DEMOLITION PLAN - AREA D

Revisions:	Item	Date	Description

NOT FOR CONSTRUCTION  
FOR REFERENCE ONLY

Graphic Scale:	0 50' 100' 150'
DFD Project Number:	23G1L
Set Type:	PRELIMINARY DESIGN
Date Issued:	09/12/2025
Sheet Number:	C200D













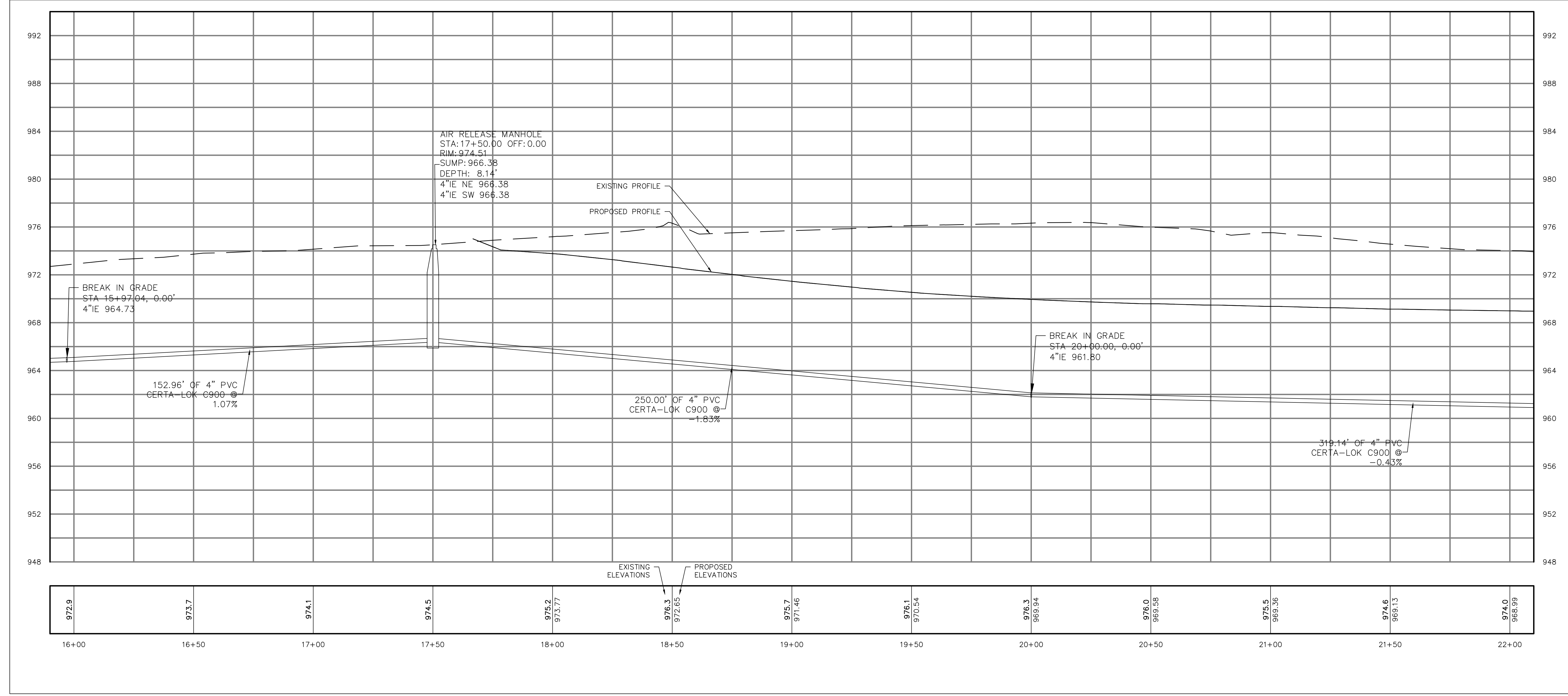
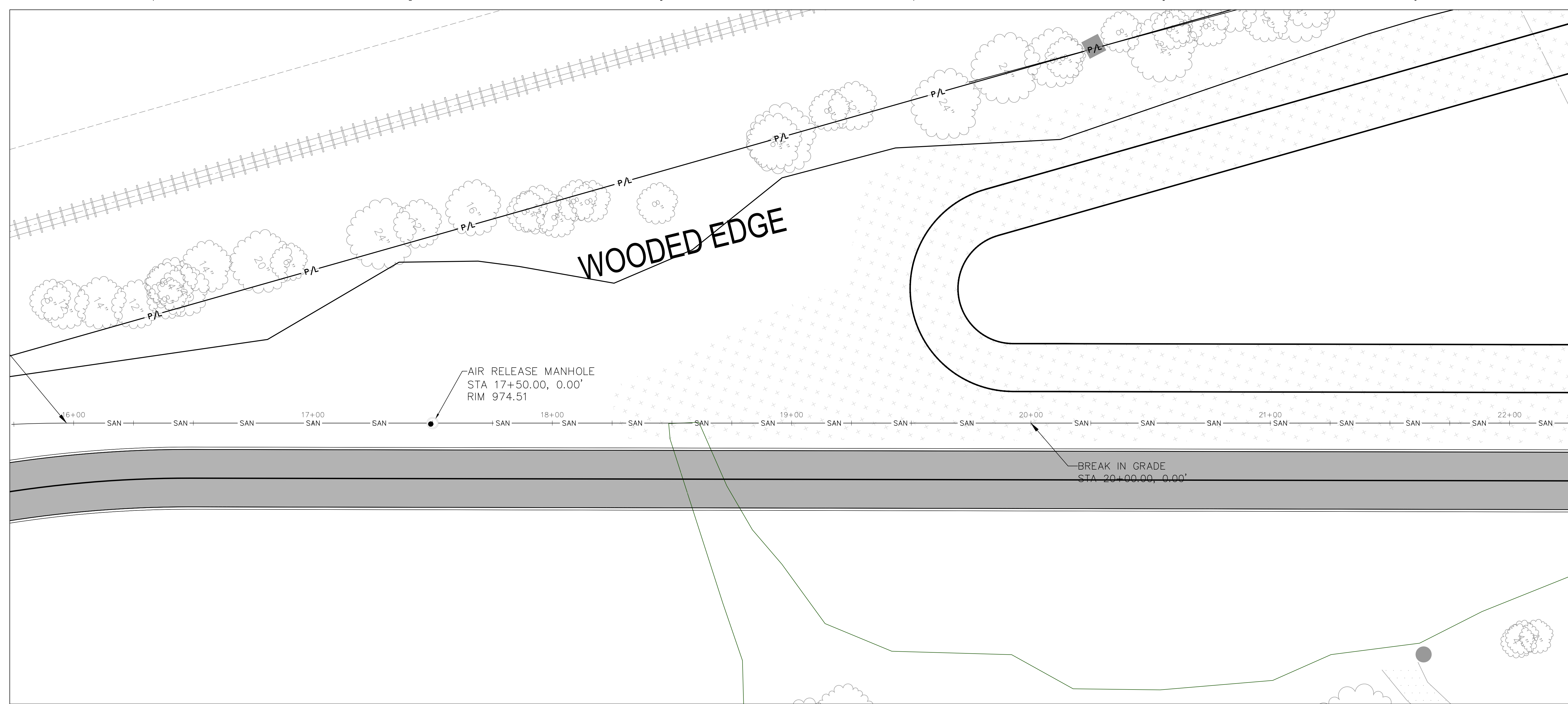




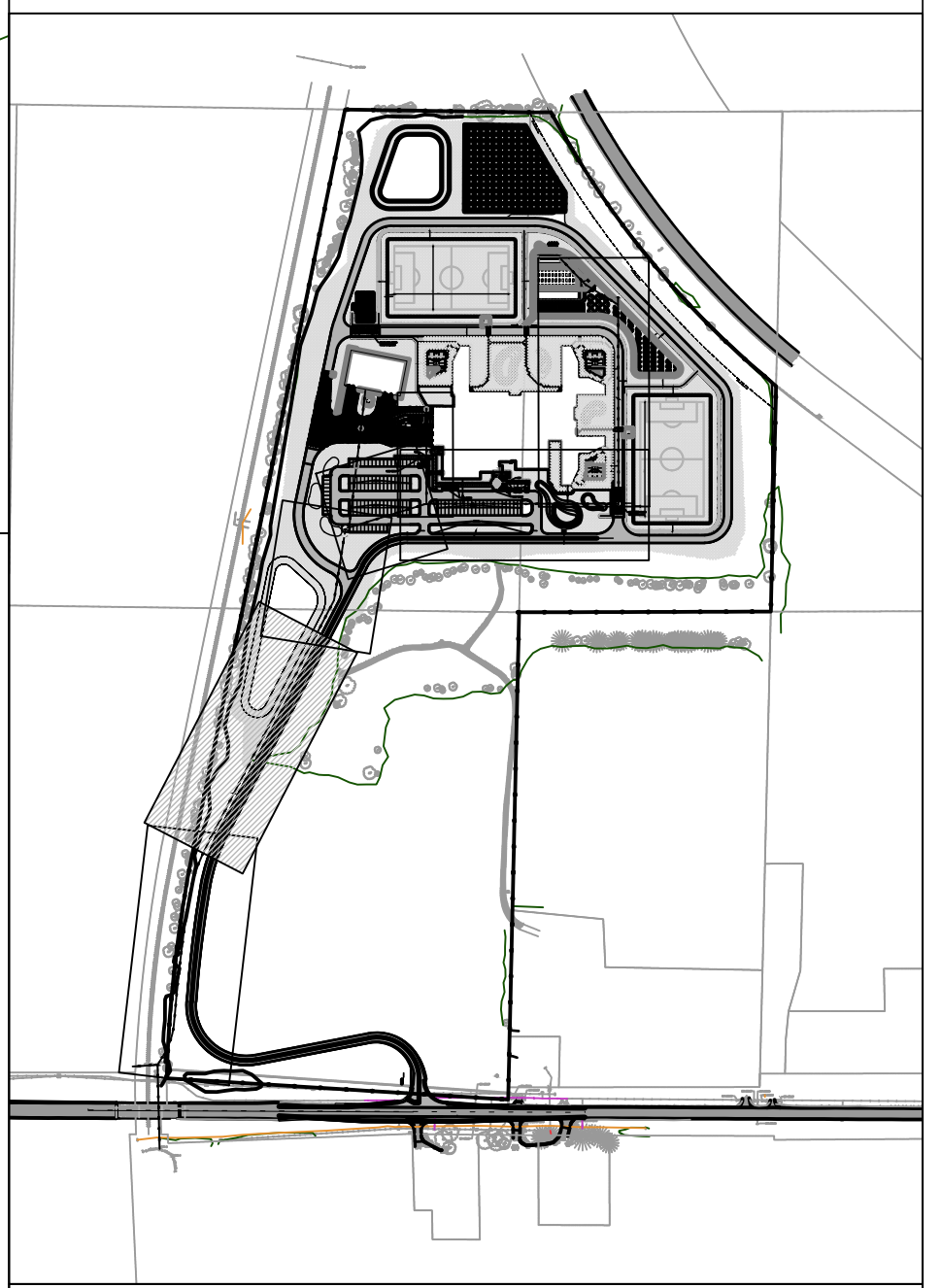








**DIGGERS HOTLINE**  
 Dial 811 or (800)242-8511  
 www.DiggersHotline.com



**LEGEND**

- SANITARY SEWER PIPE
- SANITARY CLEANOUT
- SANITARY MANHOLE

**SEWER NOTES**

- ALL GRAVITY SANITARY SEWER MAIN AND LATERALS SHALL BE PVC SDR-35, ASTM D-3034. ALL SANITARY FORCE MAIN SHALL BE HDPE DR11, AWWA C906.
- ALL UTILITY TRENCH BACKFILL MATERIAL SHALL BE GRANULAR.
- ALL RIM ELEVATIONS, STATIONS & OFFSETS PROVIDED ARE TO CENTER OF STRUCTURE/FITTING.
- SANITARY PIPE LENGTHS ARE MEASURED FROM CENTER OF STRUCTURE TO CENTER OF STRUCTURE.
- ALL PIPE SLOPES PROVIDED ARE CALCULATED FROM END OF PIPE TO END OF PIPE.
- ALL SANITARY MANHOLES SHALL HAVE A NEENAH R-1550, WITH TYPE B LID.

Revisions:

Item	Date	Description

Graphic Scale: 0 50' 100' 150'

DFD Project Number: 23G1L

Set Type: PRELIMINARY DESIGN

Date Issued: 09/12/2025

Sheet Number: C612

**BWBR**  
 1 South Pinckney Street, Ste. 500  
 Madison, WI 53703  
 608.629.3701  
 bwbr.com

Commission Number: P.2300288.00

**Kapur**  
 4654 B MILLMORE LN  
 MADISON, WI 53703  
 608.673.4400  
 KAPURINC.COM

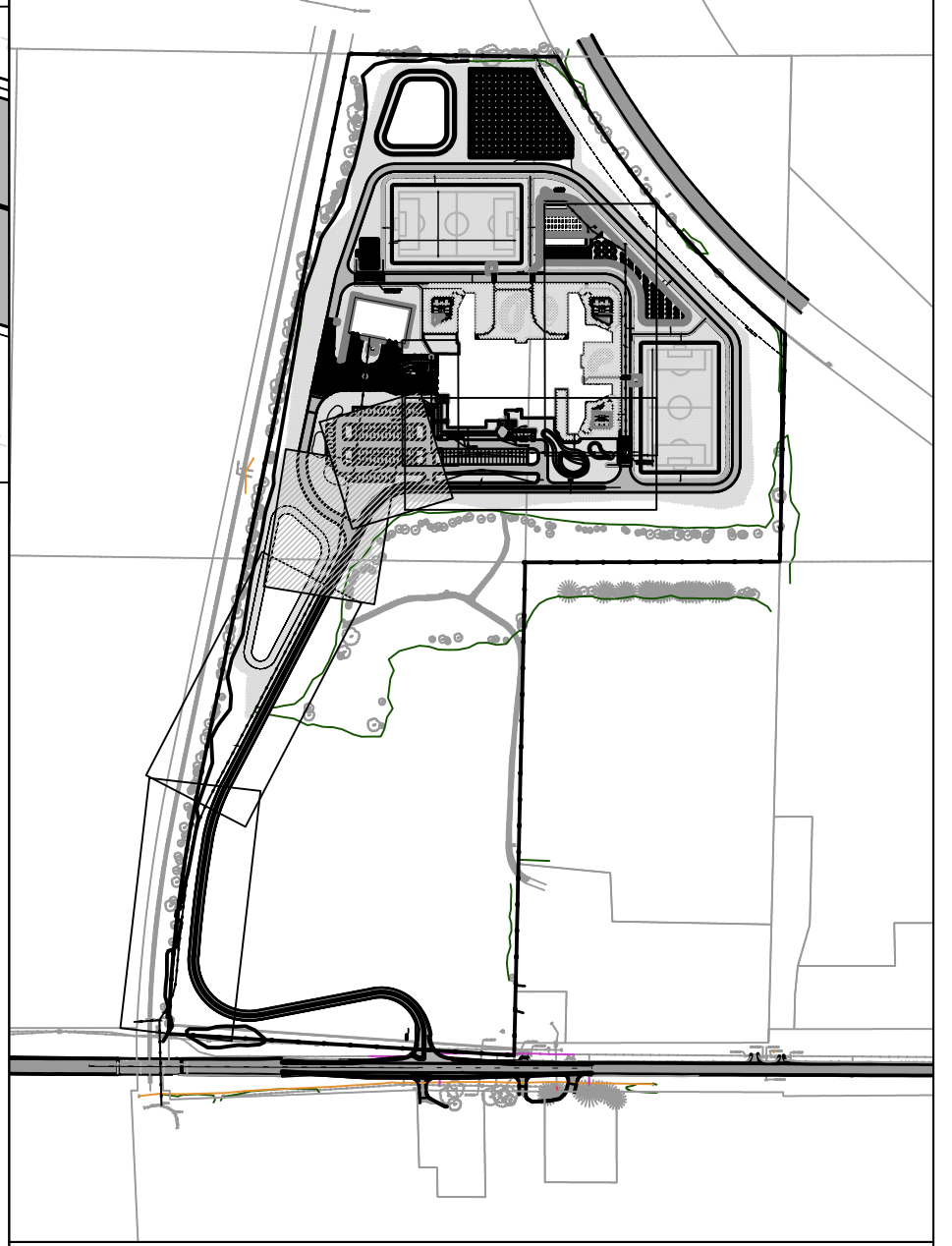
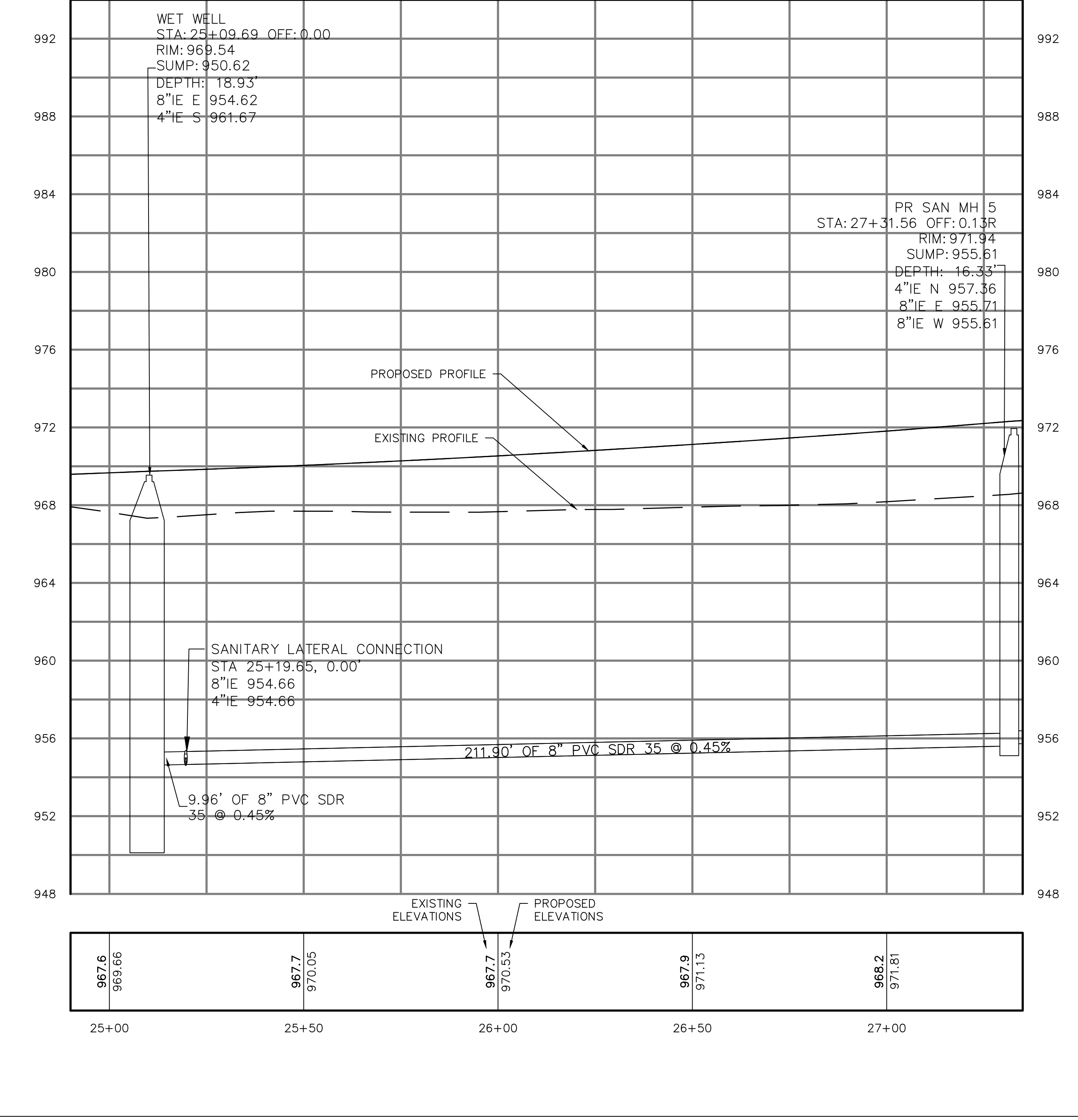
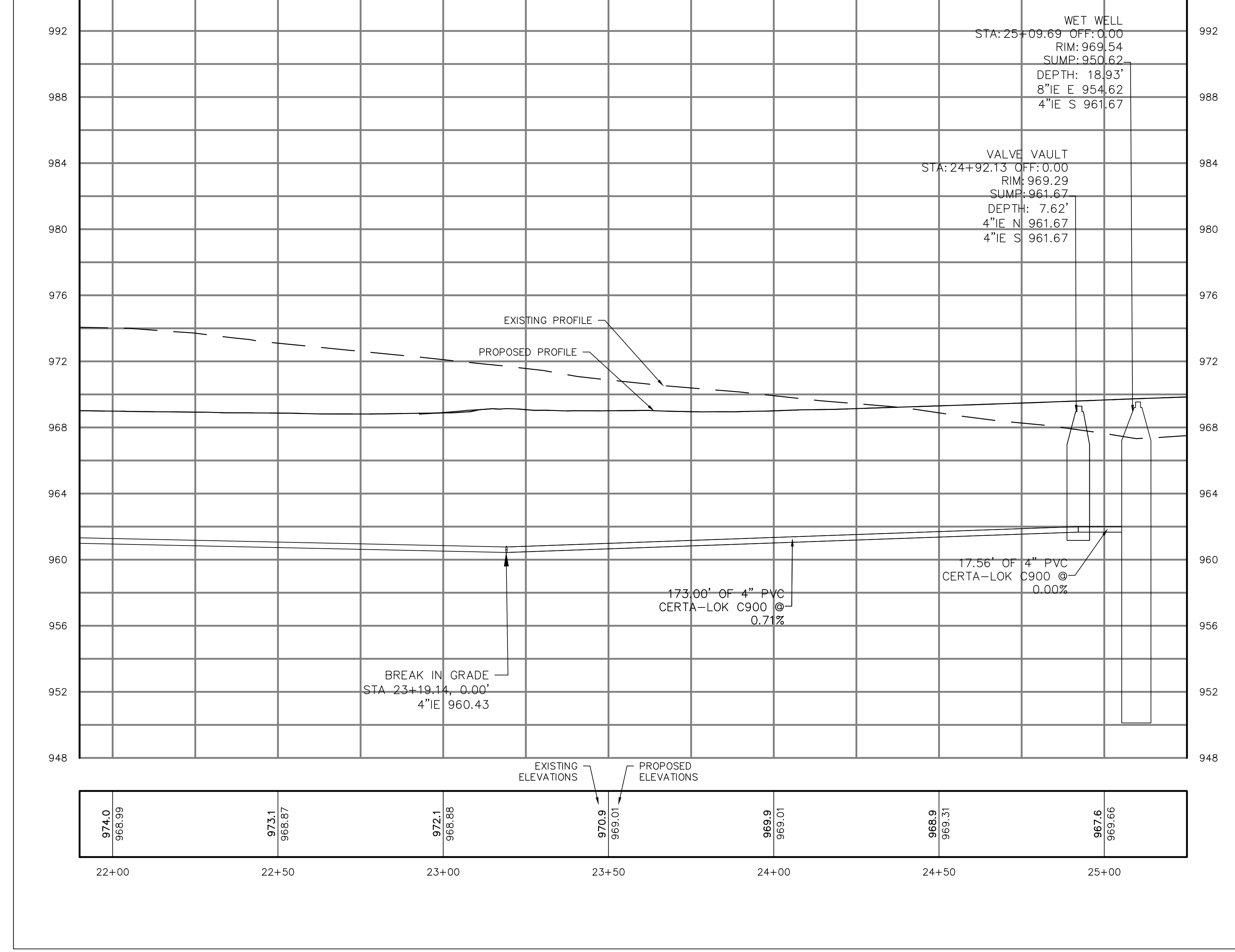
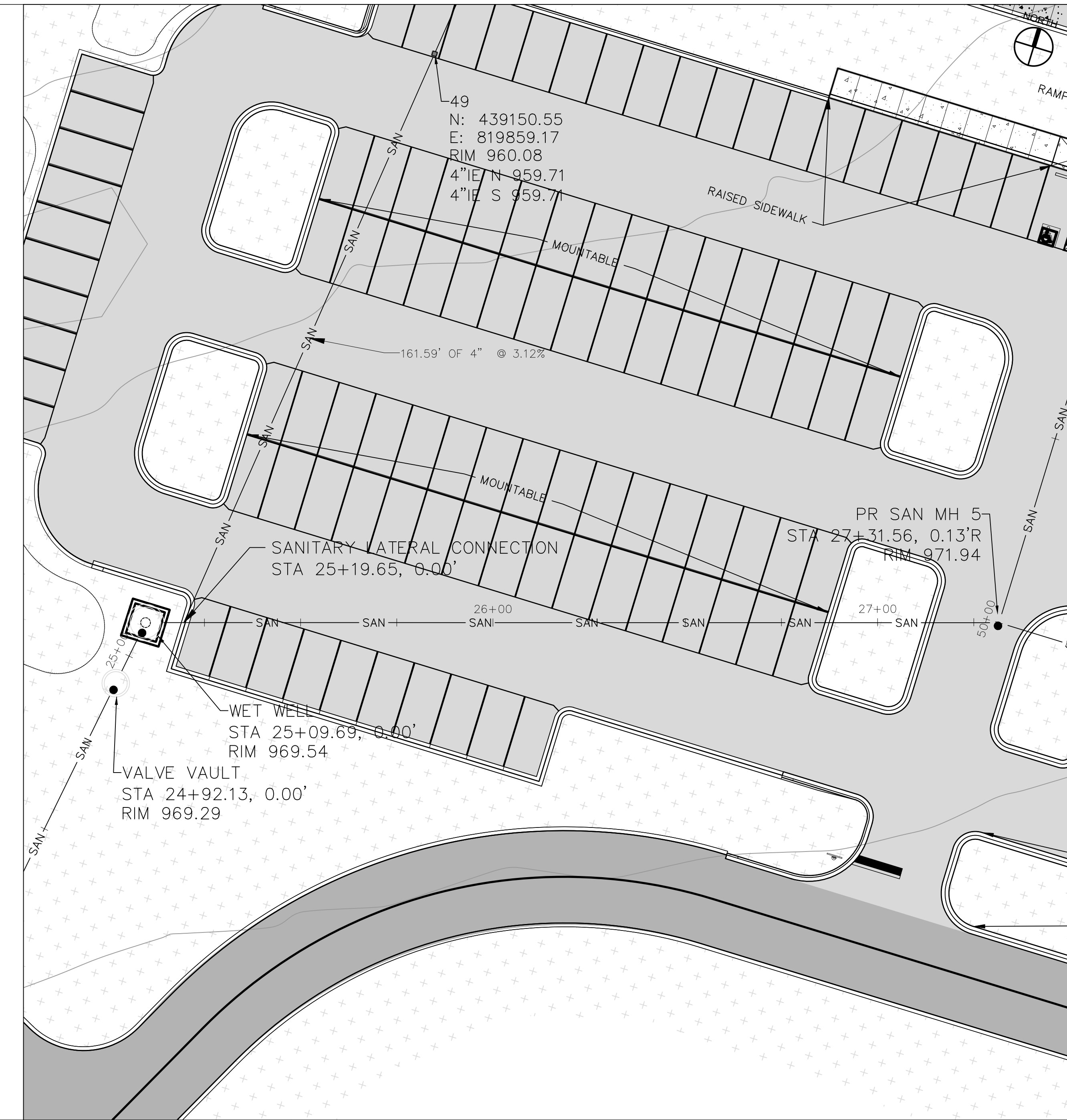
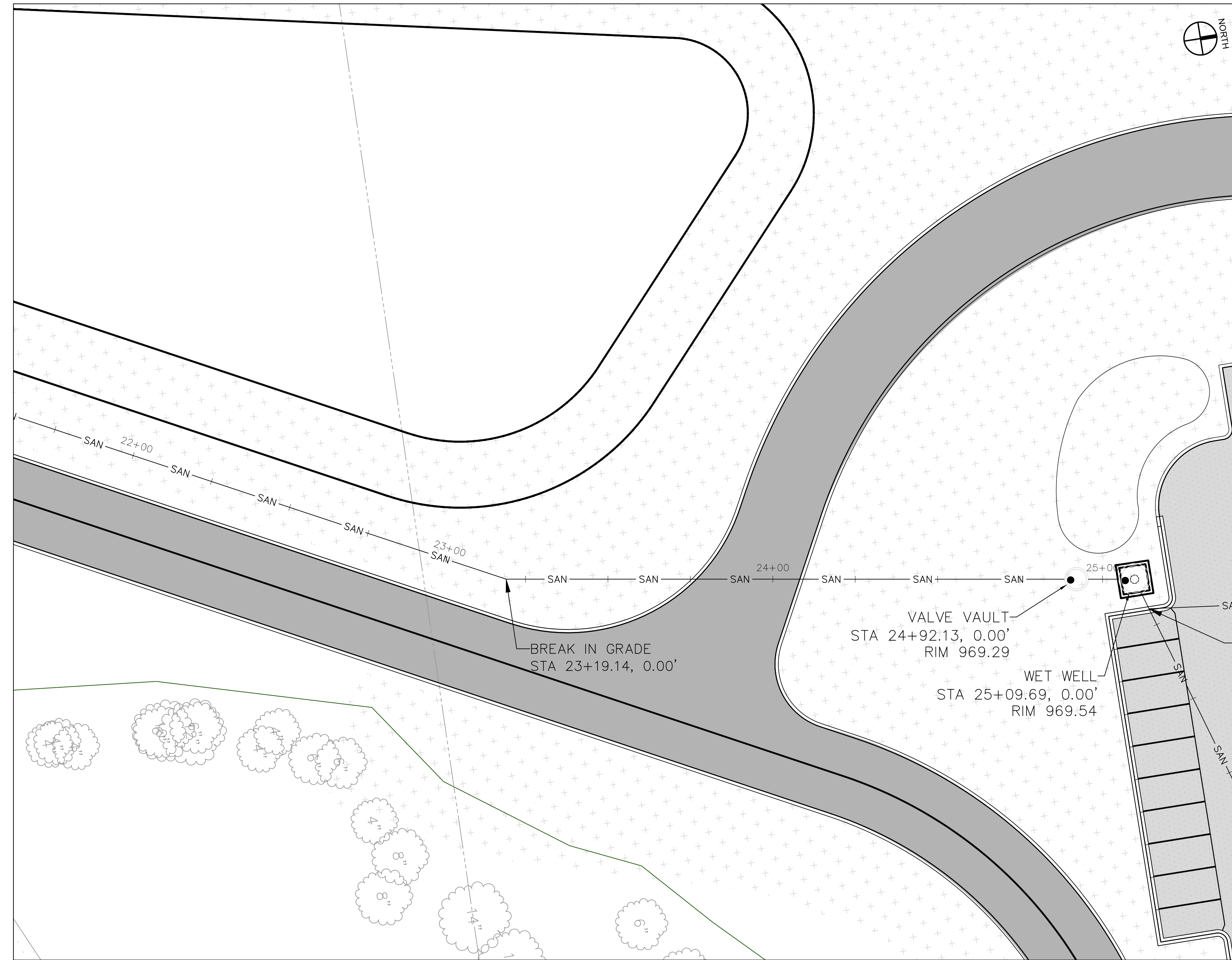
This document may be an electronic file or may be printed from an electronic file provided to the user. It is the sole responsibility of the user to ensure that the content and quality is consistent with the content and quality of the original documents on file at BWBR.

State of Wisconsin  
 Department of Administration  
 Division of Facilities Development

**TYPE 1 JUVENILE CORRECTIONAL FACILITY  
 DEPARTMENT OF CORRECTIONS  
 DANE COUNTY, WISCONSIN**

Sheet Title: SANITARY SEWER PLAN & PROFILE

NOT FOR CONSTRUCTION  
 FOR REFERENCE ONLY



**LEGEND**

- SANITARY SEWER PIPE
- SANITARY CLEANOUT
- SANITARY MANHOLE

- SEWER NOTES**
- ALL GRAVITY SANITARY SEWER MAIN AND LATERALS SHALL BE PVC SDR-35, ASTM D-3034. ALL SANITARY FORCEMAIN SHALL BE HDPE DR11, AWWA C906.
  - ALL UTILITY TRENCH BACKFILL MATERIAL SHALL BE GRANULAR.
  - ALL RIM ELEVATIONS, STATIONS & OFFSETS PROVIDED ARE TO CENTER OF STRUCTURE/FITTING. SANITARY PIPE LENGTHS ARE MEASURED FROM CENTER OF STRUCTURE TO CENTER OF STRUCTURE.
  - ALL PIPE SLOPES PROVIDED ARE CALCULATED FROM END OF PIPE TO END OF PIPE.
  - ALL SANITARY MANHOLES SHALL HAVE A NEENAH R-1550, WITH TYPE B LID.

**Revisions:**

Item	Date	Description

Graphic Scale: 0 50' 100' 150'

DFD Project Number: 23G1L

Set Type: PRELIMINARY DESIGN

Date Issued: 09/12/2025

Sheet Number: C613

**BWBR**  
1 South Pinney Street, Ste. 600  
Madison, WI 53703  
608.629.3701  
bwbr.com

Commission Number: P.2300288.00

**Kapur**  
4654 B BILTMORE LN  
MADISON, WI 53703  
608.673.4400  
KAPURINC.COM

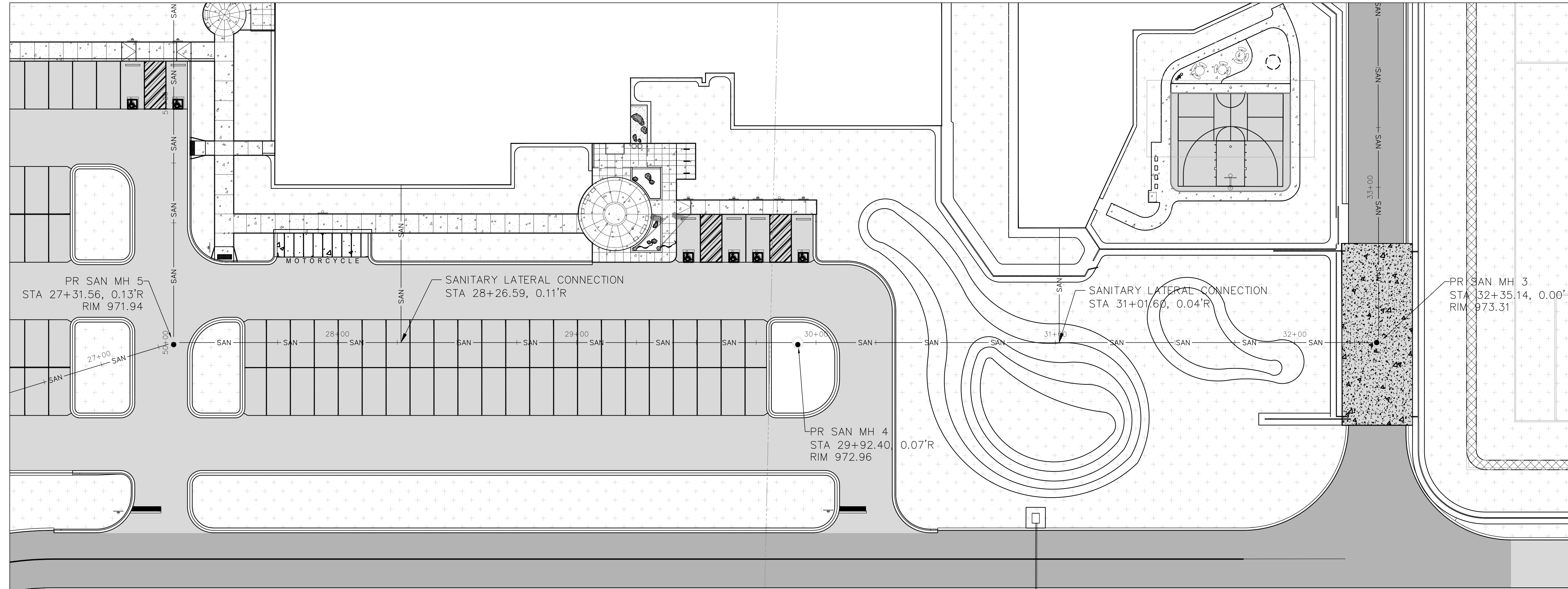
This document may be an electronic file or may be printed from an electronic file provided to the user. It is the sole responsibility of the user to ensure that the content and quality is consistent with the content and quality of the original documents on file at BWBR.

State of Wisconsin  
Department of Administration  
Division of Facilities Development

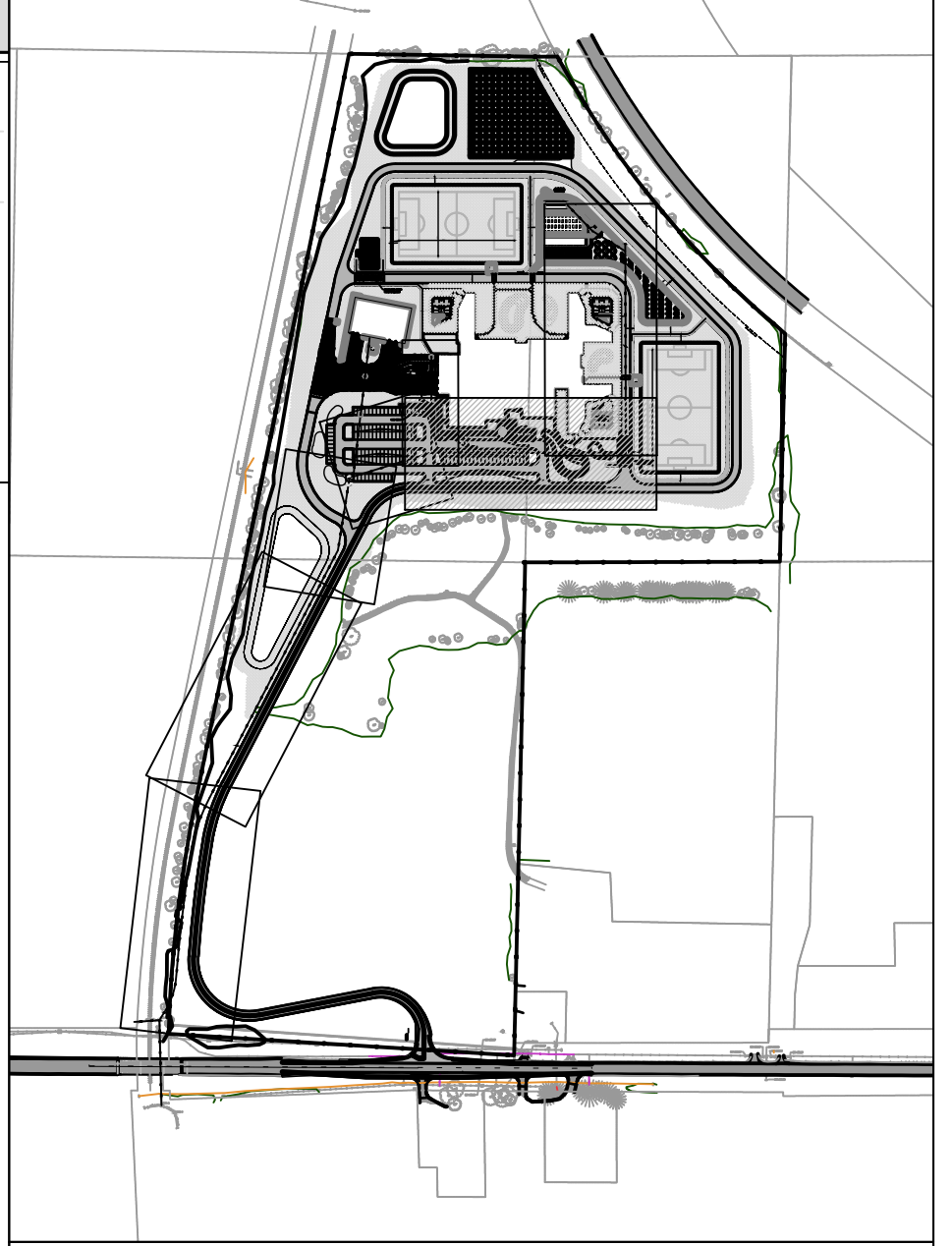
**TYPE 1 JUVENILE CORRECTIONAL FACILITY  
DEPARTMENT OF CORRECTIONS  
DANE COUNTY, WISCONSIN**

Sheet Title: SANITARY SEWER PLAN & PROFILE

NOT FOR CONSTRUCTION  
FOR REFERENCE ONLY



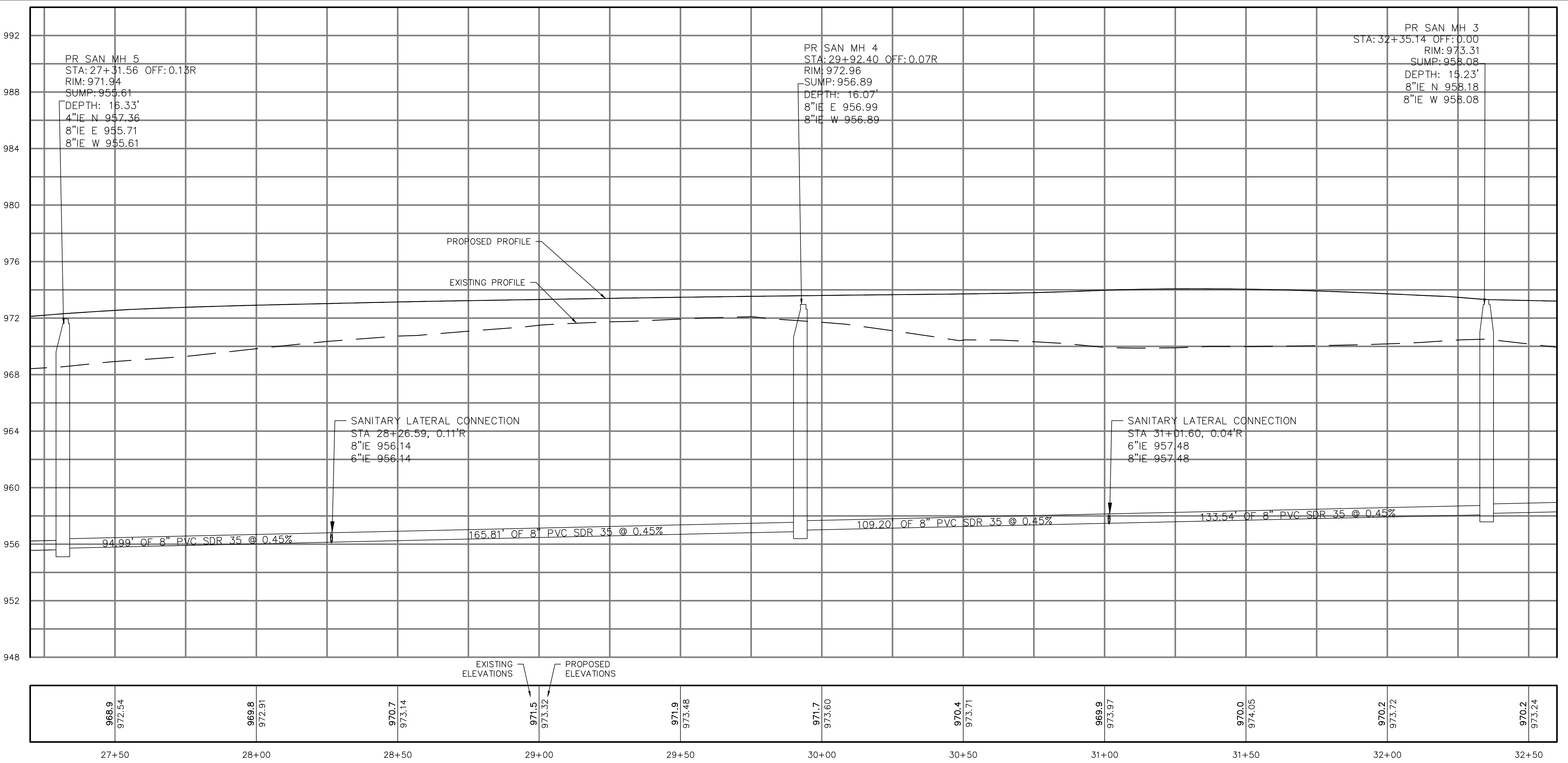
**DIGGERS HOTLINE**  
 Dial 811 or (800)242-8511  
 www.DiggersHotline.com



**LEGEND**

- SANITARY SEWER PIPE
- SANITARY CLEANOUT
- SANITARY MANHOLE

- SEWER NOTES**
- ALL GRAVITY SANITARY SEWER MAIN AND LATERALS SHALL BE PVC SDR-35, ASTM D-3034. ALL SANITARY FORCEMAIN SHALL BE HDPE DRI1-AWMA C906
  - ALL UTILITY TRENCH BACKFILL MATERIAL SHALL BE GRANULAR.
  - ALL RIM ELEVATIONS, STATIONS & OFFSETS PROVIDED ARE TO CENTER OF STRUCTURE/FITTING.
  - SANITARY PIPE LENGTHS ARE MEASURED FROM CENTER OF STRUCTURE TO CENTER OF STRUCTURE.
  - ALL PIPE SLOPES PROVIDED ARE CALCULATED FROM END OF PIPE TO END OF PIPE.
  - ALL SANITARY MANHOLES SHALL HAVE A NEENAH R-1550, WITH TYPE B LID



**BWBR**  
 1 South Pinney Street, Ste. 500  
 Madison, WI 53703  
 608.629.3701  
 bwbr.com

Commission Number: P.2300288.00

**Kapur**  
 4654 B MILLMORE LN  
 MADISON, WI 53703  
 608.673.4400  
 KAPURINC.COM

This document may be an electronic file or may be printed from an electronic file provided to the user. It is the sole responsibility of the user to ensure that the content and quality is consistent with the content and quality of the original documents on file at BWBR.

State of Wisconsin  
 Department of Administration  
 Division of Facilities Development

FITCHBURG, WI

**TYPE 1 JUVENILE CORRECTIONAL FACILITY  
 DEPARTMENT OF CORRECTIONS  
 DANE COUNTY, WISCONSIN**

Sheet Title: SANITARY SEWER PLAN & PROFILE

Item	Date	Description
NOT FOR CONSTRUCTION FOR REFERENCE ONLY		

Graphic Scale: 0 50' 100' 150'

DFD Project Number: 23G1L  
 Set Type: PRELIMINARY DESIGN  
 Date Issued: 09/12/2025  
 Sheet Number: C614















