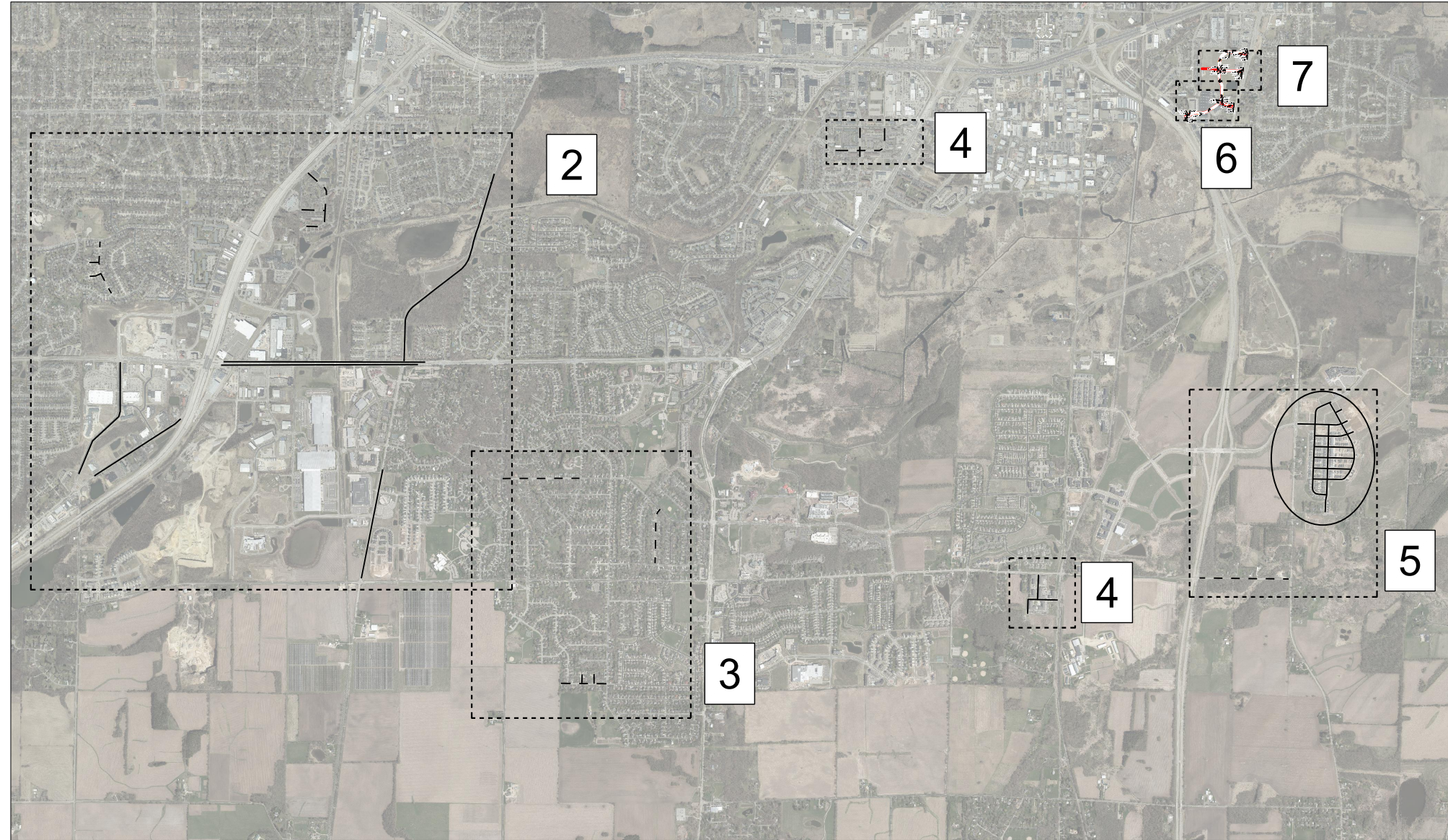


# 2025 SURFACE MAINTENANCE

CITY OF FITCHBURG, WISCONSIN

SHEET NO.	SHEET DESCRIPTION
0	TITLE SHEET
1	GENERAL NOTES
2	SHEET 2
3	SHEET 3
4	SHEET 4
5	SHEET 5
6	PAVEMENT MARKING 1
7	PAVEMENT MARKING 2



I:\PUBLIC WORKS\ENGINEERING\TRANS\PROJ\2025 STREETS PROGRAM\2025 SURFACE MAINTENANCE\CAD\GENERAL NOTES MAINTENANCE.DWG

PROJECT CONTACTS

CITY OF FITCHBURG PUBLIC WORKS

ZAC LAUNDRIE  
ROW ENGINEER  
5520 LACY ROAD  
FITCHBURG, WI 53711  
PHONE: 608-270-4263  
EMAIL: ZAC.LAUNDRIE@FITCHBURGWI.GOV

SAM HAGEMAN  
ENGINEERING TECHNICIAN  
5520 LACY ROAD  
FITCHBURG, WI 53711  
PHONE: 608-206-3109  
EMAIL: SAMANTHA.HAGEMAN@FITCHBURGWI.GOV

ROSS KAHLER  
SENIOR TRANSPORTATION ENGINEER  
5520 LACY ROAD  
FITCHBURG, WI 53711  
PHONE: 608-270-4266  
EMAIL: ROSS.KAHLER@FITCHBURGWI.GOV

GENERAL NOTES

1. ALL WORK SHALL BE COMPLETED IN ACCORDANCE WITH THE LATEST EDITIONS OF THE SPECIAL PROVISIONS FOR THIS PROJECT, "CITY OF FITCHBURG STANDARD SPECIFICATIONS FOR PUBLIC WORKS CONSTRUCTION", AND THE STATE OF WISCONSIN "STANDARD SPECIFICATIONS FOR HIGHWAY AND STRUCTURE CONSTRUCTION".
2. ALL STREET DIMENSIONS ARE MEASURED TO THE EDGE OF PAVEMENT UNLESS SPECIFIED ELSEWHERE.
3. PAVEMENT MAINTENANCE EXTENTS ARE TO 1' PAST EXISTING MATCH LINES UNLESS OTHERWISE NOTED OR DIRECTED BY ENGINEER.
4. ALL EXISTING PAVEMENT MARKING ON CHIPSEAL ROADS IS TO BE REMOVED PRIOR TO CRACKSEAL AND CHIPSEAL WORK.
5. PAVEMENT MARKING ON TOP OF NEW CHIPSEAL IS TO BE LATEX PAINT. ALL OTHER PAVEMENT MARKING IS TO BE EPOXY PAINT.
6. THE CRACK BETWEEN THE PAVEMENT AND ADJACENT CURB AND GUTTER IS TO BE CRACKFILLED AS IF IT WERE A REGULAR STREET CRACK, UNLESS OTHERWISE SPECIFIED BY THE ENGINEER. WHEN CRACKFILLING THE CRACK BETWEEN THE PAVEMENT AND THE CURB, CONTINUE FOR ENTIRE STREET SECTION.



2025 SURFACE MAINTENANCE

GENERAL NOTES

DRAWN BY: ZJL  
DATE: 4/23/2025  
REVISED:

SHEET NO.:

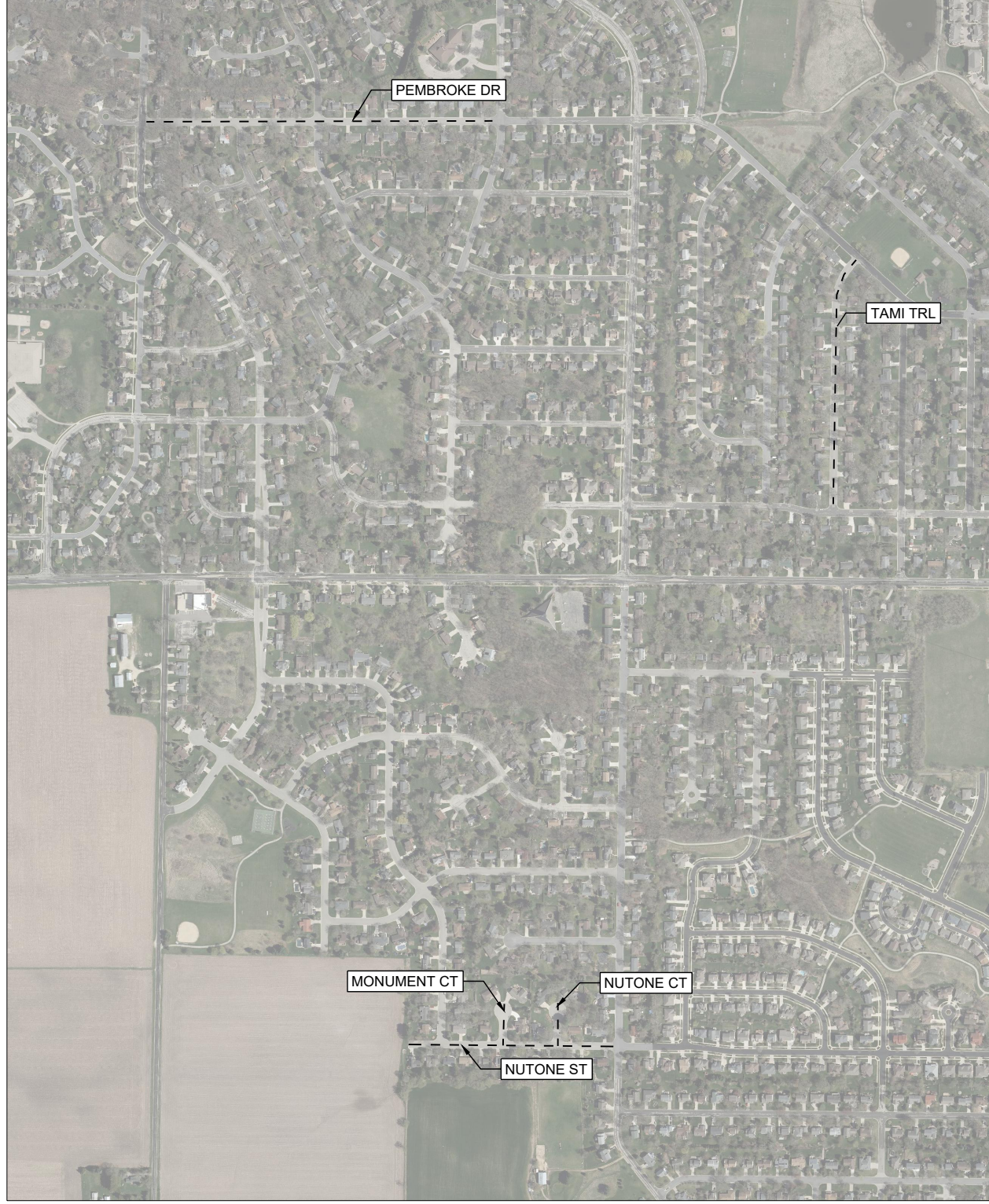
1



Sheet #	Street	To/from	Width (ft)	Length (ft)	Surface Area (SY)	Action
2	Fitchrona Rd	Nesbitt Rd to McKee Rd	52	3013	17408	Crack
2	Nesbitt Rd	Fitchrona Rd to 1400' S of McKee Rd	22	2474	6048	Crack
2	Seminole Hwy	McKee Rd to City Limits	34	5308	20052	Crack
2	Seminole Hwy	600' S of Schuman to Lacy RAB	34	2400	9067	Crack
2	McKee Rd WB lanes	500' E of Seminole Hwy to 250' E of USH 18	50	4806	26700	Crack
2	McKee Rd EB lanes	300' E of Seminole Hwy to 250' E of USH 19	50	4700	26111	Crack
2	Chesapeake Dr	Williamsburg Way to Danville Dr	30	527	1757	Crack, Chip
2	Chester Cir	Entire	28	260	809	Crack, Chip
2	Chesapeake Cir	Entire	28	200	622	Crack, Chip
2	Chalet Gardens Rd	Private Dr to Verona Frontage Rd	28	1726	5370	Crack, Chip
2	Chalet Gardens Ct	Entire	28	728	2265	Crack, Chip

LEGEND	
	CRACK SEAL
	CHIP SEAL, CRACK SEAL





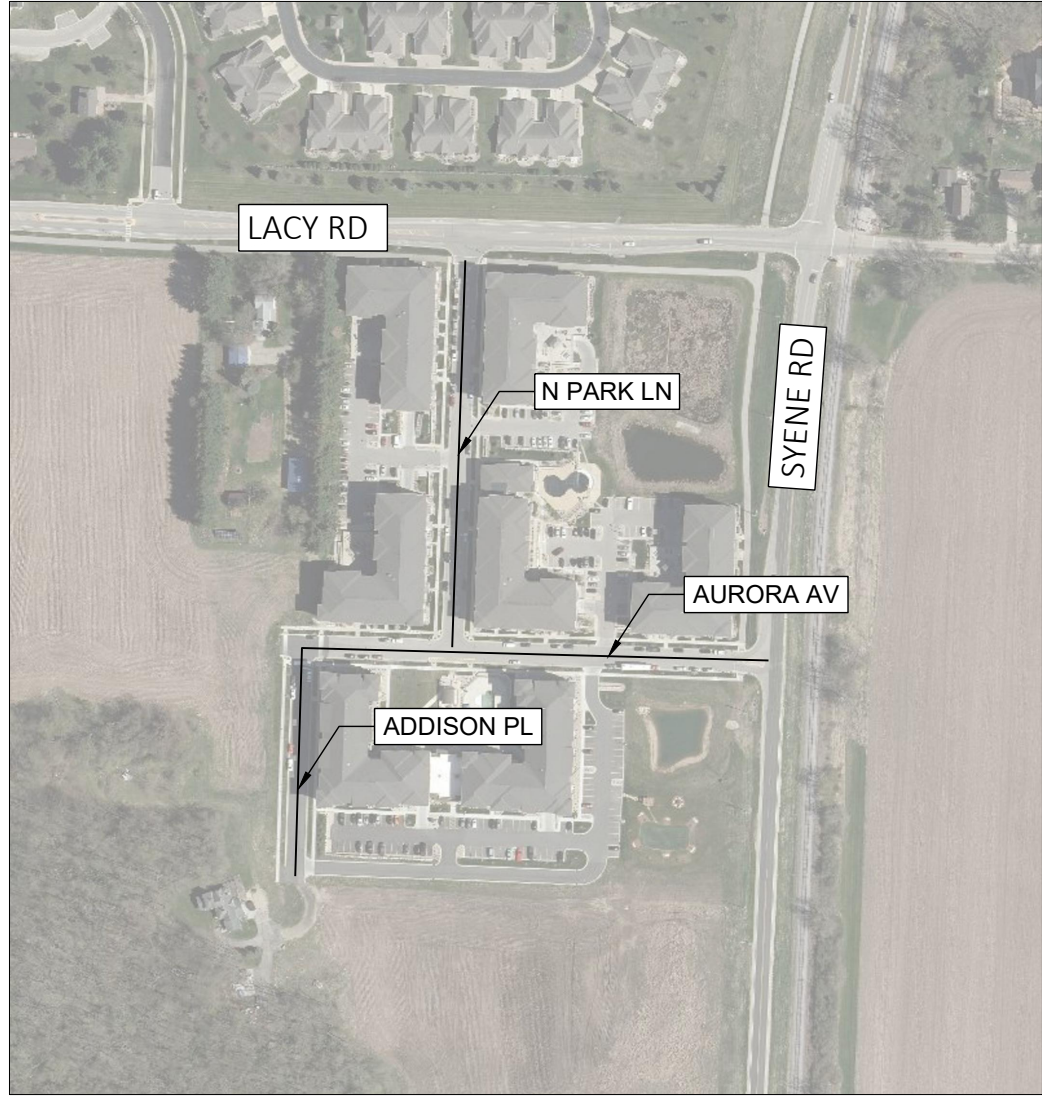
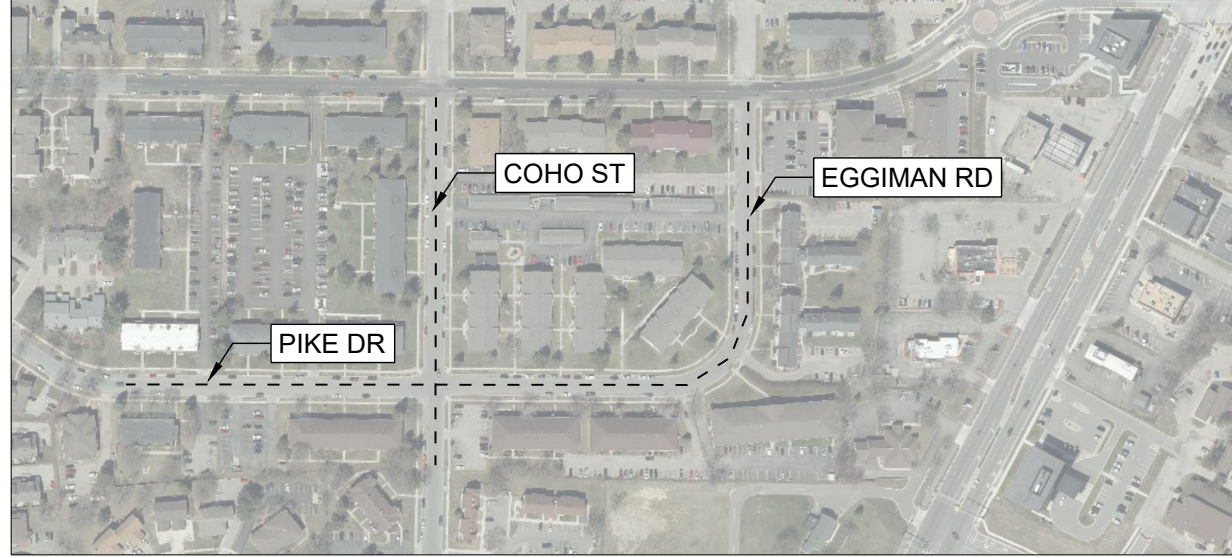
Sheet #	Street	To/from	Width (ft)	Length (ft)	Surface Area (SY)	Action
3	Tami Trl	Cheryl Dr to Barbara Dr	36	1387	5548	Crack, Chip
3	Pembroke Dr	Osmundsen Rd to Raritan Rd	36	1826	7304	Crack, Chip
3	Nutone St	Richardson to W end	36	1080	4320	Crack, Chip
3	Nutone Ct	Entire	36	225	900	Crack, Chip
3	Monument Ct	Entire	36	225	900	Crack, Chip

LEGEND	
—	CRACK SEAL
- - -	CHIP SEAL, CRACK SEAL

2025 SURFACE MAINTENANCE

DRAWN BY: ZJL  
 DATE: 4/23/2025  
 REVISED:

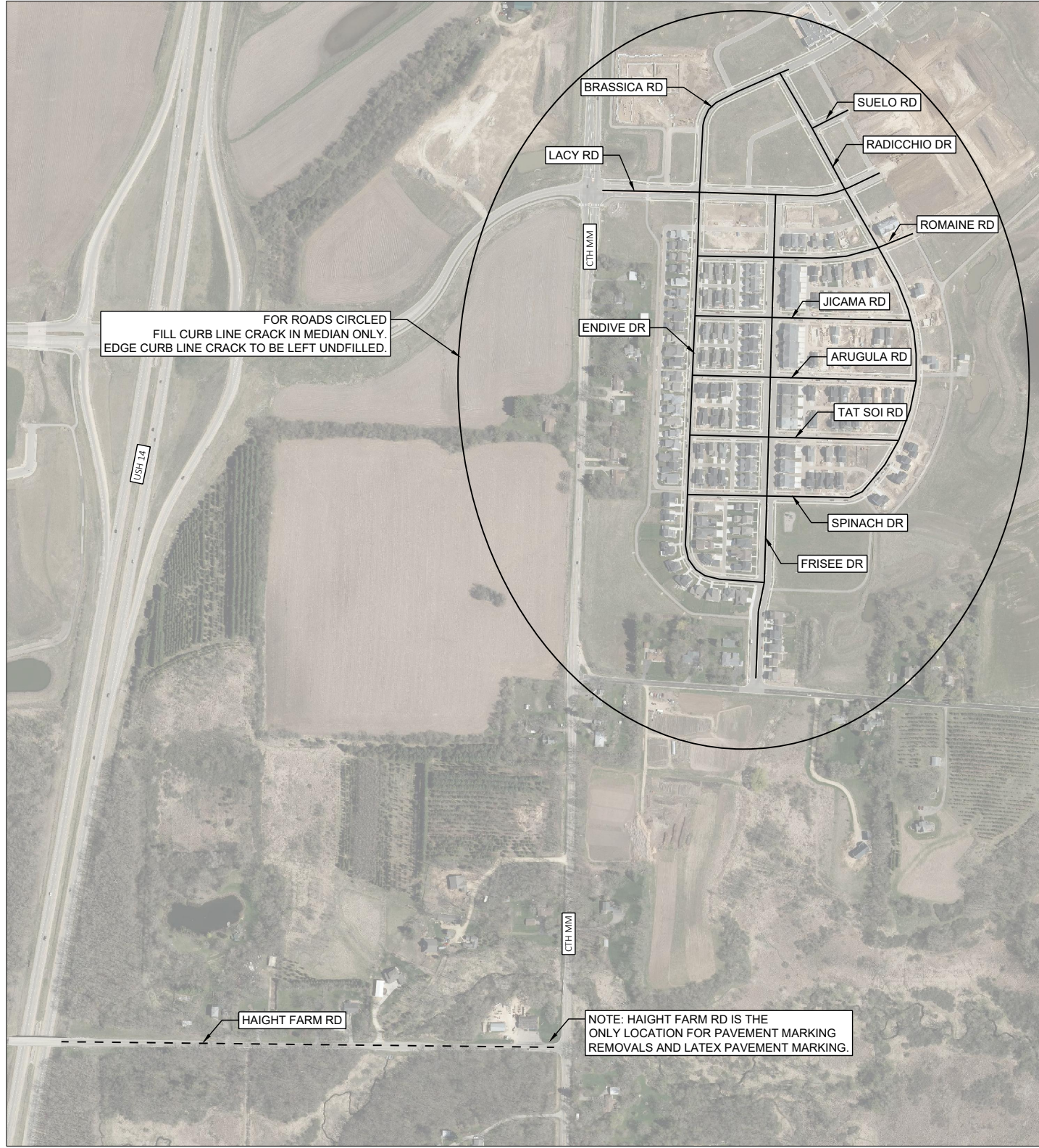




Sheet #	Street	To/from	Width (ft)	Length (ft)	Surface Area (SY)	Action
4	Pike Dr and Eggiman Rd	230' E of Turbot Dr to Greenway Cross	36	1673	6692	Crack, Chip
4	Coho St	Greenway Cross to 130' S of Pike Dr	36	716	2864	Crack, Chip
4	N Park Ln	Lacy Rd to Aurora Av	30	590	1967	Crack
4	Aurora Av	Addison Pl to Syene Rd	30	710	2367	Crack
4	Addison Pl	Aurora Av to End	28	350	1089	Crack

LEGEND	
—	CRACK SEAL
- - -	CHIP SEAL, CRACK SEAL





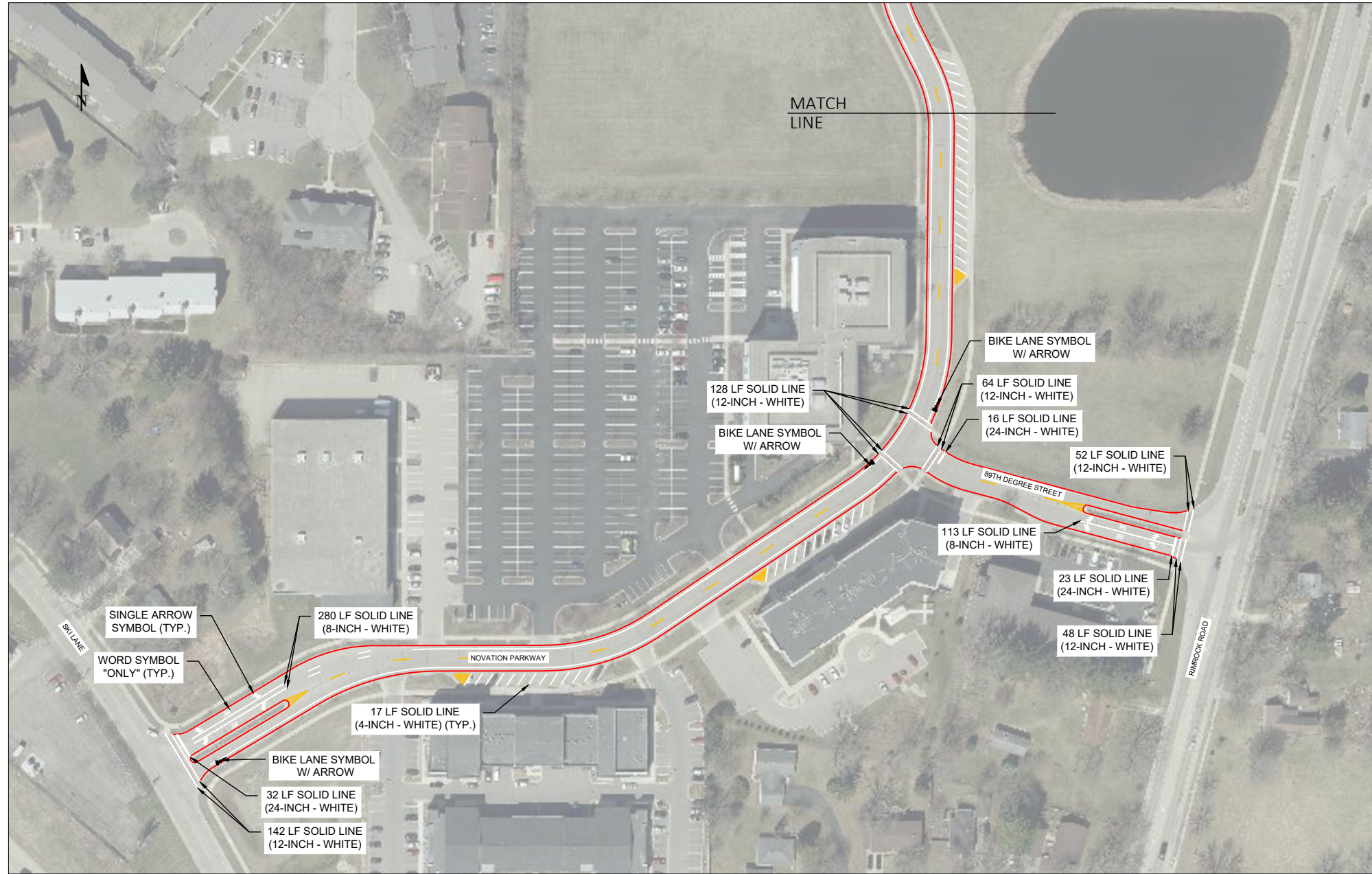
Sheet #	Street	To/from	Width (ft)	Length (ft)	Surface Area (SY)	Action
5	Haight Farm Rd	US 14 Bridge to CTH MM	26	2250	6500	Crack, Chip
5	Lacy Rd	MM to 150' E of Radicchio	54	1217	7302	Crack
5	Brassica Rd	Lacy to Radicchio	30	752	2507	Crack
5	Endive Dr	Lacy to Frisee	24	1950	5200	Crack
5	Spinach Dr	Endive to Radicchio	24	700	1867	Crack
5	Tat Soi Rd	Endive to Radicchio	24	900	2400	Crack
5	Arugula Rd	Endive to Radicchio	24	966	2576	Crack
5	Jicama Rd	Endive to Radicchio	24	930	2480	Crack
5	Frisee Dr	Lacy Rd to Goodland Park Rd	40	2093	9302	Crack
5	Romaine Rd	Endive Dr to 150' E of Radicchio	24	950	2533	Crack
5	Radicchio Dr	Brassica Rd to Spinach	24	2076	5536	Crack
5	Suelo Rd	Radicchio Dr to 150' E of Radicchio	30	150	500	Crack

LEGEND	
—	CRACK SEAL
- - -	CHIP SEAL, CRACK SEAL

Sheet #	Street	To/from	400 4" Paint Removal	508 4-Inch Latex Paint
5	Haight Farm Rd	US 14 Bridge to CTH MM	9000	9000



Sheet #	Street	To/from	500 4-Inch Epoxy Paint	501 8-Inch Epoxy Paint	502 12-Inch Epoxy Paint	503 24-Inch Epoxy Paint	504 Epoxy Bike Lane Symbol w/ Arrow	505 Epoxy Single Arrow Symbol	506 Epoxy Double Arrow Symbol	507 Epoxy Word Symbol
6 and 7	Novation Pkwy	Ski Ln/Oregon Rd to Rimrock Rd	8172	420	428	60	6	6	2	3
6	89th Degree St	Novation to Rimrock	1030	113	164	39		4	0	2



Sheet #	Street	To/from	500 4-Inch Epoxy Paint	501 8-Inch Epoxy Paint	502 12-Inch Epoxy Paint	503 24-Inch Epoxy Paint	504 Epoxy Bike Lane Symbol w/ Arrow	505 Epoxy Single Arrow Symbol	506 Epoxy Double Arrow Symbol	507 Epoxy Word Symbol
6 and 7	Novation Pkwy	Ski Ln/Oregon Rd to Rimrock Rd	8172	420	428	60	6	6	2	3
7	Latitude 43 St	End to Rimrock	140	152	388	61	0	0	0	0

