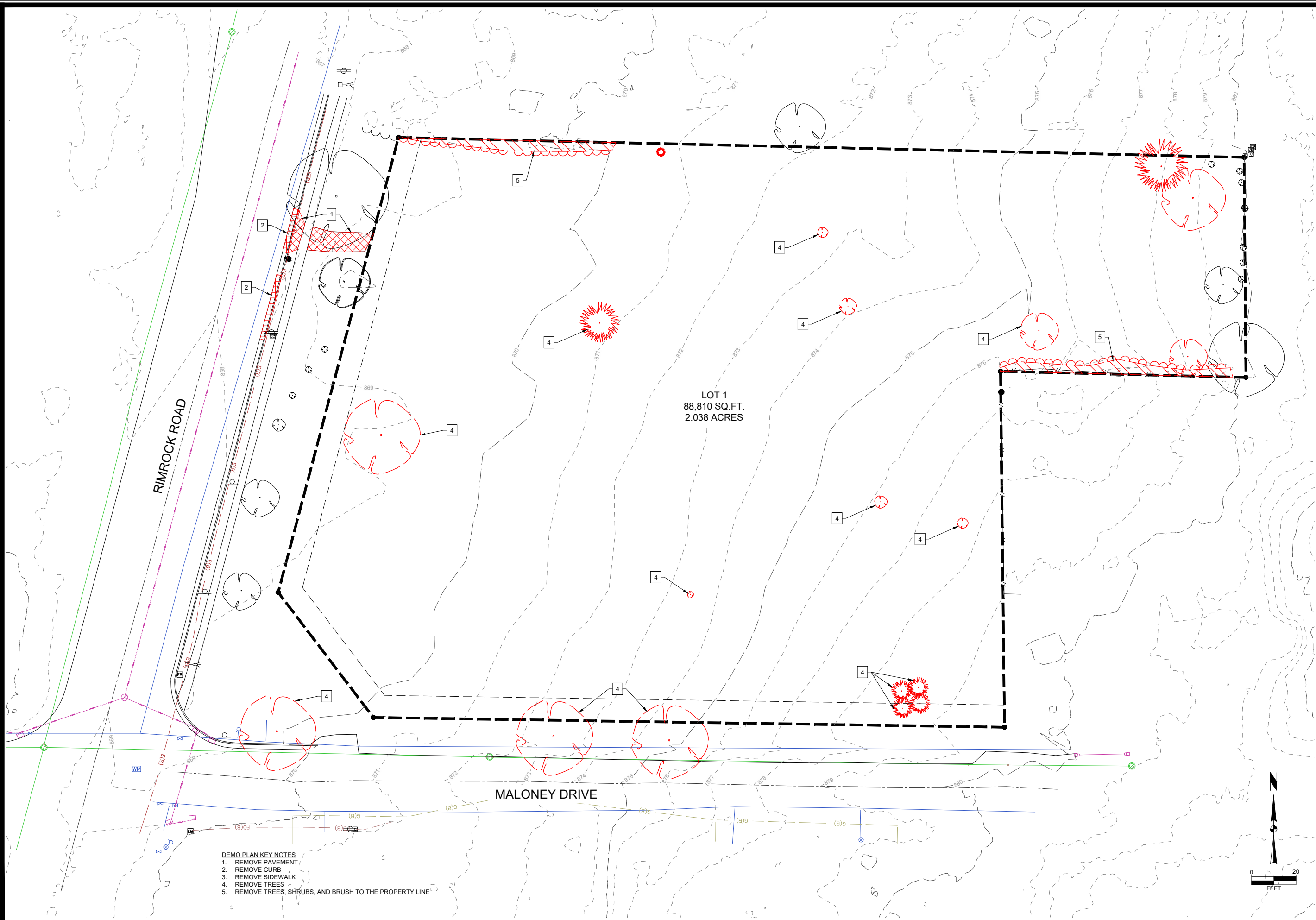


U:\proj\1241205\1241205_1205_1205\1241205_Plan.dwg, DAVID SHOW, EXISTING CONDITIONS & DEMO PLAN, 2024/11/09, 11:24 AM, ANSI FULL BLEED @ 17.00 X 11.00 INCHES

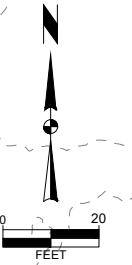


LOT 1
88,810 SQ.FT.
2.038 ACRES

RIMROCK ROAD

MALONEY DRIVE

- DEMO PLAN KEY NOTES
1. REMOVE PAVEMENT
 2. REMOVE CURB
 3. REMOVE SIDEWALK
 4. REMOVE TREES
 5. REMOVE TREES, SHRUBS, AND BRUSH TO THE PROPERTY LINE



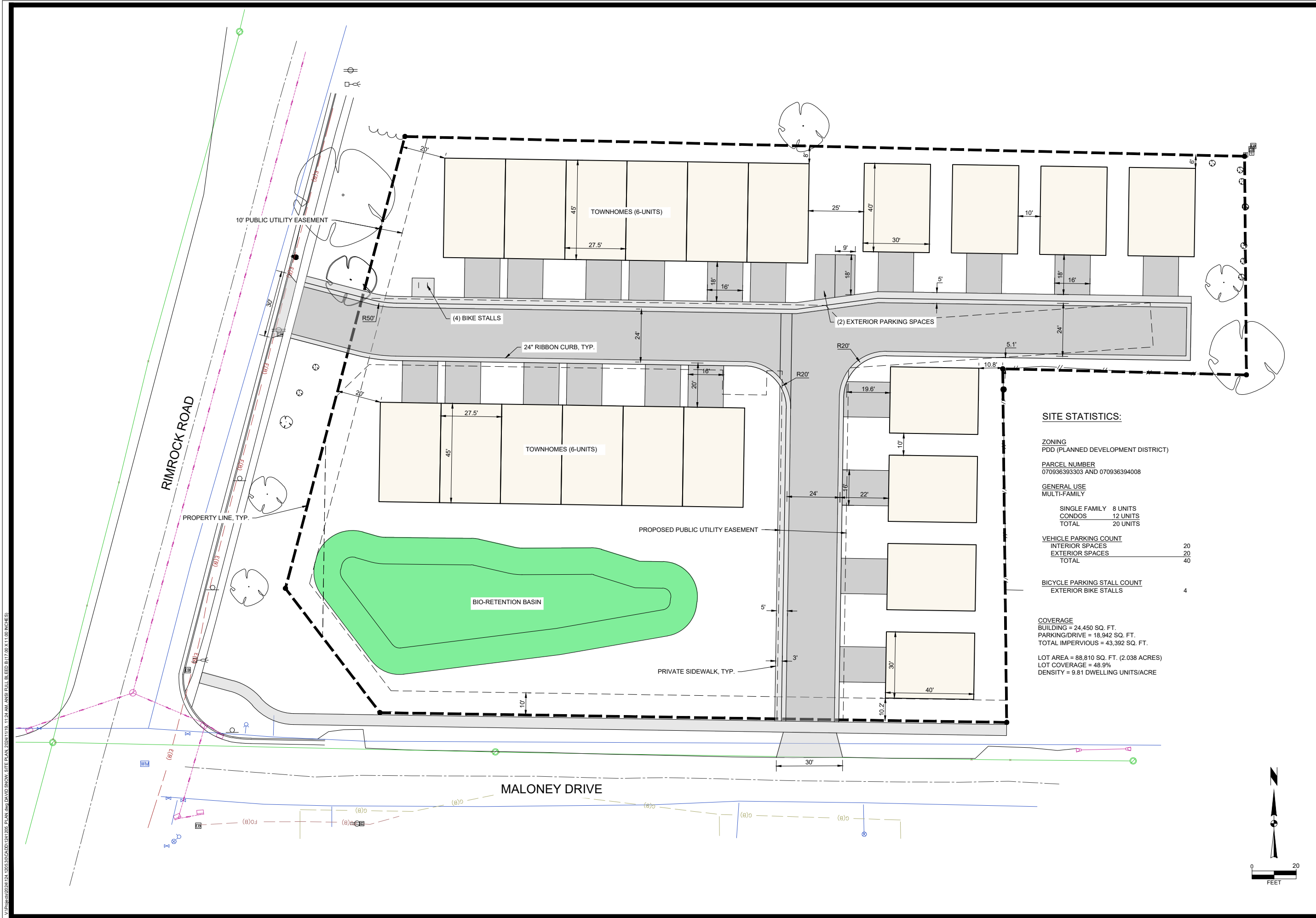
MARK	REVISION	DATE	BY
Engineer: BCA	Checked By: MLC	Scale: 1" = 20'	
Technician: DMS	Date: 11-04-2024	T-R-S: TTN+RRW+SS	
Project No.: 124.1205.30			Sheet C200

OLIVE TREE RESIDENCES
EXISTING CONDITIONS & DEMO PLAN CITY OF FITCHBURG, DANE COUNTY, WISCONSIN
SNYDER & ASSOCIATES, INC.

5010 VOGES ROAD
MADISON, WISCONSIN 53718
608-838-0444 | www.snyder-associates.com



I:\Projects\124.1205.30\124.1205.30\CD\124.1205.30_Plan.dwg, DAVID SNYDER, SITE PLAN, 2024/11/09, 11:24 AM, ANSI EPLI, BLEED, B (17.00 X 11.00 INCHES)



SITE STATISTICS:

ZONING
PDD (PLANNED DEVELOPMENT DISTRICT)

PARCEL NUMBER
070936393303 AND 070936394008

GENERAL USE
MULTI-FAMILY

SINGLE FAMILY	8 UNITS
CONDOS	12 UNITS
TOTAL	20 UNITS

VEHICLE PARKING COUNT

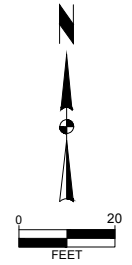
INTERIOR SPACES	20
EXTERIOR SPACES	20
TOTAL	40

BICYCLE PARKING STALL COUNT

EXTERIOR BIKE STALLS	4
----------------------	---

COVERAGE
 BUILDING = 24,450 SQ. FT.
 PARKING/DRIVE = 18,942 SQ. FT.
 TOTAL IMPERVIOUS = 43,392 SQ. FT.

LOT AREA = 88,810 SQ. FT. (2.038 ACRES)
 LOT COVERAGE = 48.9%
 DENSITY = 9.81 DWELLING UNITS/ACRE



<h1>OLIVE TREE RESIDENCES</h1> <h2>SITE PLAN</h2>	<h1>CITY OF FITCHBURG, DANE COUNTY, WISCONSIN</h1> <h2>SNYDER & ASSOCIATES, INC.</h2>
<p>SNYDER & ASSOCIATES</p>	<p>5010 VOGES ROAD MADISON, WISCONSIN 53718 608-838-0444 www.snyder-associates.com</p>
<p>Project No: 124.1205.30</p> <p>Sheet C300</p>	<p>Project No: 124.1205.30</p> <p>Sheet C300</p>

\\p001\proj\2024\124.1205\3D\CADD\124.1205_Plan.dwg, DAVID SNYDER, GRADING PLAN, 2024/11/19, 11:24 AM, ANS FULL BLEED (17.00 X 11.00 INCHES)



OLIVE TREE RESIDENCES

GRADING PLAN

CITY OF FITCHBURG, DANE COUNTY, WISCONSIN

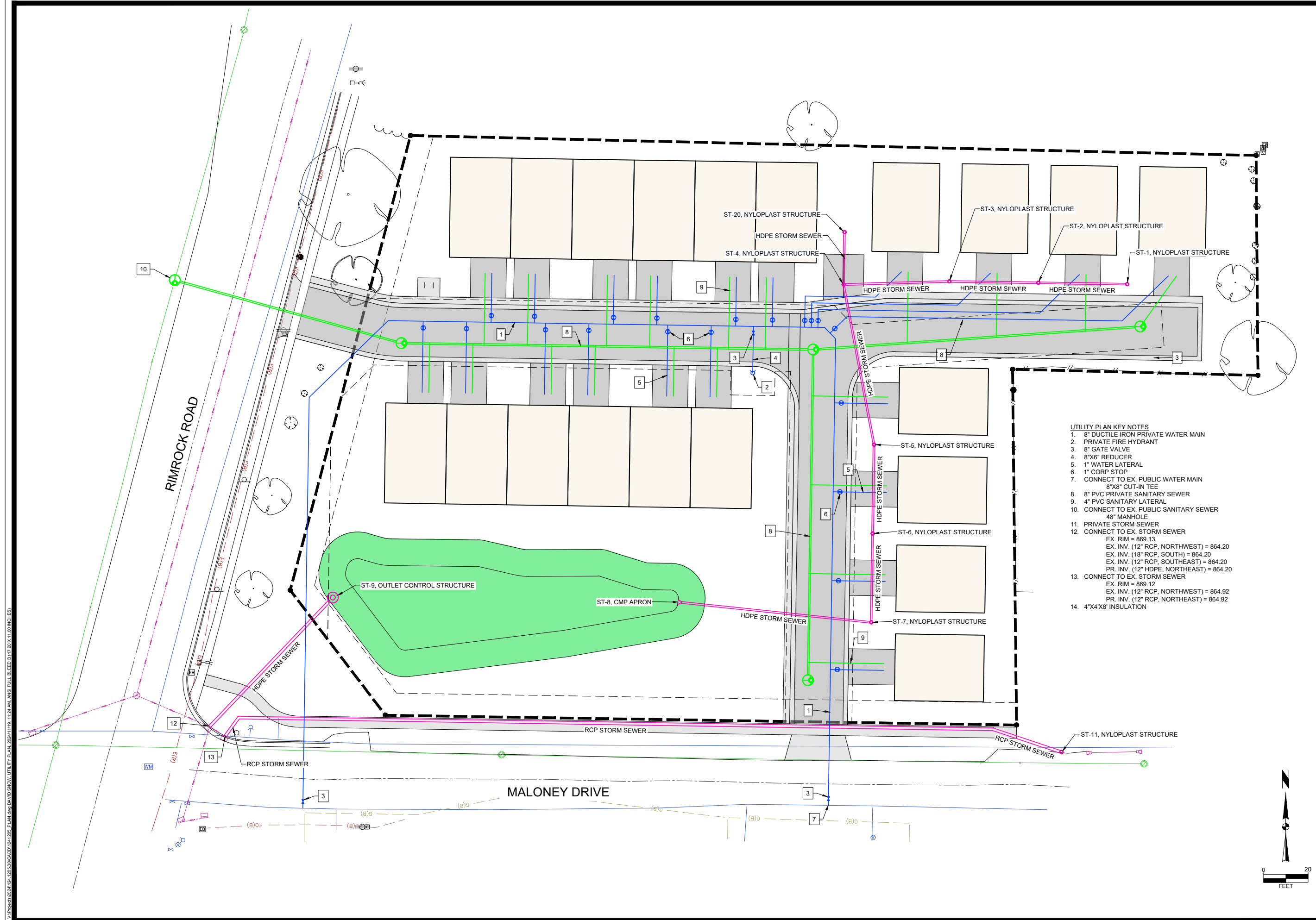


Project No: 124.1205.30
Sheet C400

SNYDER & ASSOCIATES, INC.

5010 VOGES ROAD
MADISON, WISCONSIN 53718
608-838-0444 | www.snyder-associates.com

MARK	REVISION	DATE	BY
Engineer: BCA	Checked By: MLC	Scale: 1" = 20'	
Technician: DMS	Date: 11-04-2024	T-R-S: TN+RRW+SS	
Project No: 124.1205.30			Sheet C400



- UTILITY PLAN KEY NOTES**
1. 8" DUCTILE IRON PRIVATE WATER MAIN
 2. PRIVATE FIRE HYDRANT
 3. 8" GATE VALVE
 4. 8"x8" REDUCER
 5. 1" WATER LATERAL
 6. 1" CORP STOP
 7. CONNECT TO EX. PUBLIC WATER MAIN
8"x8" CUT-IN TEE
 8. 8" PVC PRIVATE SANITARY SEWER
 9. 4" PVC SANITARY LATERAL
 10. CONNECT TO EX. PUBLIC SANITARY SEWER
48" MANHOLE
 11. PRIVATE STORM SEWER
 12. CONNECT TO EX. STORM SEWER
EX. RIM = 869.13
EX. INV. (12" RCP, NORTHWEST) = 864.20
EX. INV. (18" RCP, SOUTH) = 864.20
EX. INV. (12" RCP, SOUTHEAST) = 864.20
PR. INV. (12" HDPE, NORTHEAST) = 864.20
 13. CONNECT TO EX. STORM SEWER
EX. RIM = 869.12
EX. INV. (12" RCP, NORTHWEST) = 864.92
PR. INV. (12" RCP, NORTHEAST) = 864.92
 14. 4"x4"x8" INSULATION

MARK	REVISION	DATE	BY
Engineer: BCA	Checked By: MLC	Scale: 1" = 20'	
Technician: DMS	Date: 11-04-2024	T-R-S: TTN-RRW-SS	

OLIVE TREE RESIDENCES
UTILITY PLAN
 CITY OF FITCHBURG, DANE COUNTY, WISCONSIN
SNYDER & ASSOCIATES, INC.

Project No: 124.1205.30
 Sheet C500

Project No: 124.1205.30
 Sheet C500

5010 VOGES ROAD
 MADISON, WISCONSIN 53718
 608-835-0444 | www.snyder-associates.com

V:\p\241205\124.1205.30\CD\124.1205.PLAN.dwg, DAVID SNYDER, UTILITY PLAN, 2024/11/09, 11:24 AM, ANSI FULL BLEED B (17.00 X 11.00 INCHES)