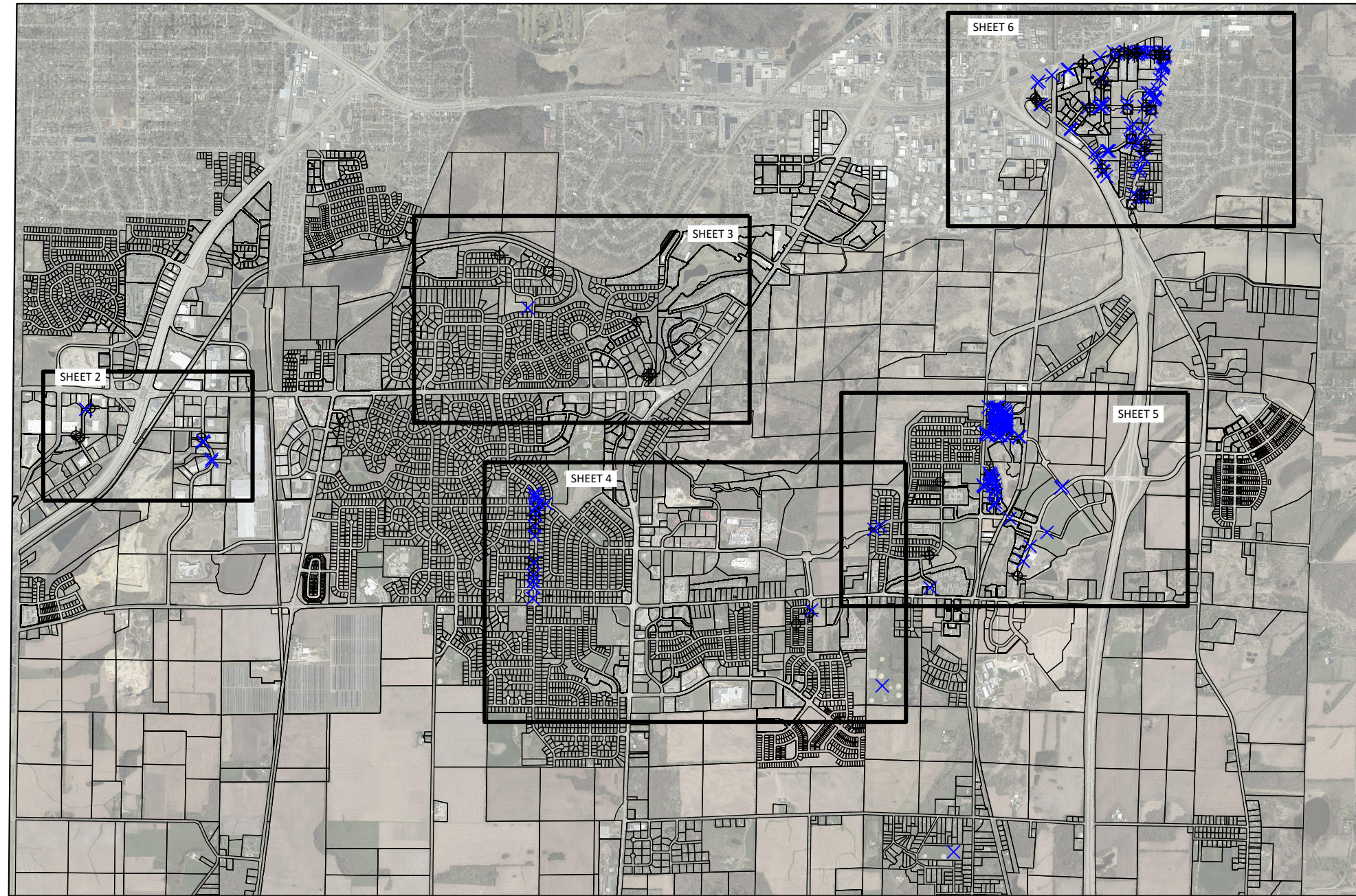


2024 SIDEWALK AND RELATED CONCRETE

CITY OF FITCHBURG, WISCONSIN

SHEET NO.	SHEET DESCRIPTION
0	TITLE SHEET
1	GENERAL NOTES
2	WEST END
3	NORTH END
4	CENTRAL SECTION
5	EAST END
6	NORTHEAST CORNER
7	DETAILS
8	DETAILS



2024 SIDEAWALK AND RELATED CONCRETE
TITLE SHEET

DRAWN BY: ZJL

DATE: 05/29/2024

SHEET NO.:

0

I:\PUBLIC WORKS\ENGINEERING\TRANS\PROJ\2024 STREET-MAINT\2024 SIDEWALK AND RELATED CONCRETE\CIV\3\GENERAL NOTES 24 SIDEWALK.DWG

PROJECT CONTACTS

CITY OF FITCHBURG PUBLIC WORKS
5520 LACY ROAD
FITCHBURG, WI 53711

ROSS KAHLER
SENIOR TRANSPORTATION ENGINEER
PHONE: 608-270-4266
EMAIL: ROSS.KAHLER@FITCHBURGWI.GOV

ZAC LAUNDRIE
ROW ENGINEER
PHONE: 608-270-4263
EMAIL: ZAC.LAUNDRIE@FITCHBURGWI.GOV

SAM HAGEMAN
ENGINEERING TECHNICIAN
PHONE: 608-206-3109
EMAIL: SAMANTHA.HAGEMAN@FITCHBURGWI.GOV

GENERAL NOTES

1. ALL WORK SHALL BE COMPLETED IN ACCORDANCE WITH THE LATEST EDITIONS OF THE SPECIAL PROVISIONS FOR THIS PROJECT, "CITY OF FITCHBURG STANDARD SPECIFICATIONS FOR PUBLIC WORKS CONSTRUCTION", AND THE LATEST EDITION OF THE STATE OF WISCONSIN "STANDARD SPECIFICATIONS FOR HIGHWAY AND STRUCTURE CONSTRUCTION".
2. ALL SIDEWALK DIMENSIONS ARE MEASURED FROM JOINT TO JOINT UNLESS OTHERWISE SPECIFIED.
3. EXPANSION JOINT IS REQUIRED BETWEEN ALL NEW CONCRETE AND EXISTING CONCRETE.
4. DETECTABLE WARNING FIELDS ARE ASSUMED TO BE 5'X2'. ANY SMALLER DWF LOCATIONS MUST BE APPROVED BY ENGINEER.
5. INSTALL TWO #4 12" LONG EPOXY COATED REBAR TIE BARS DRILLED HALFWAY INTO EXISTING CONCRETE SIDEWALK AT ALL LOCATIONS WHERE REPLACEMENT SIDEWALK MEETS EXISTING SIDEWALK.
6. RESIDENTS/OWNERS MUST BE NOTIFIED BY DOOR HANGER OF ALL SIDEWALK REMOVALS AT LEAST 48 HOURS PRIOR TO WORK. RESIDENTS THAT WILL NOT BE ABLE TO ACCESS THEIR DRIVEWAY MUST BE ALLOWED TO MOVE THEIR VEHICLES PRIOR TO WORK BEGINNING.
7. A DYNAMIC MAP WITH PICTURES OF EVERY REPLACEMENT AND NEW LOCATION ARE ONLINE AT: <https://tinyurl.com/2j2dvsaw> THE ONLINE MAP SUPERCEDES THE 2024 SIDEWALK AND RELATED CONCRETE DRAWINGS.



2024 SIDEAWALK AND RELATED CONCRETE

GENERAL NOTES

DRAWN BY: ZJL

DATE: 05/29/2024

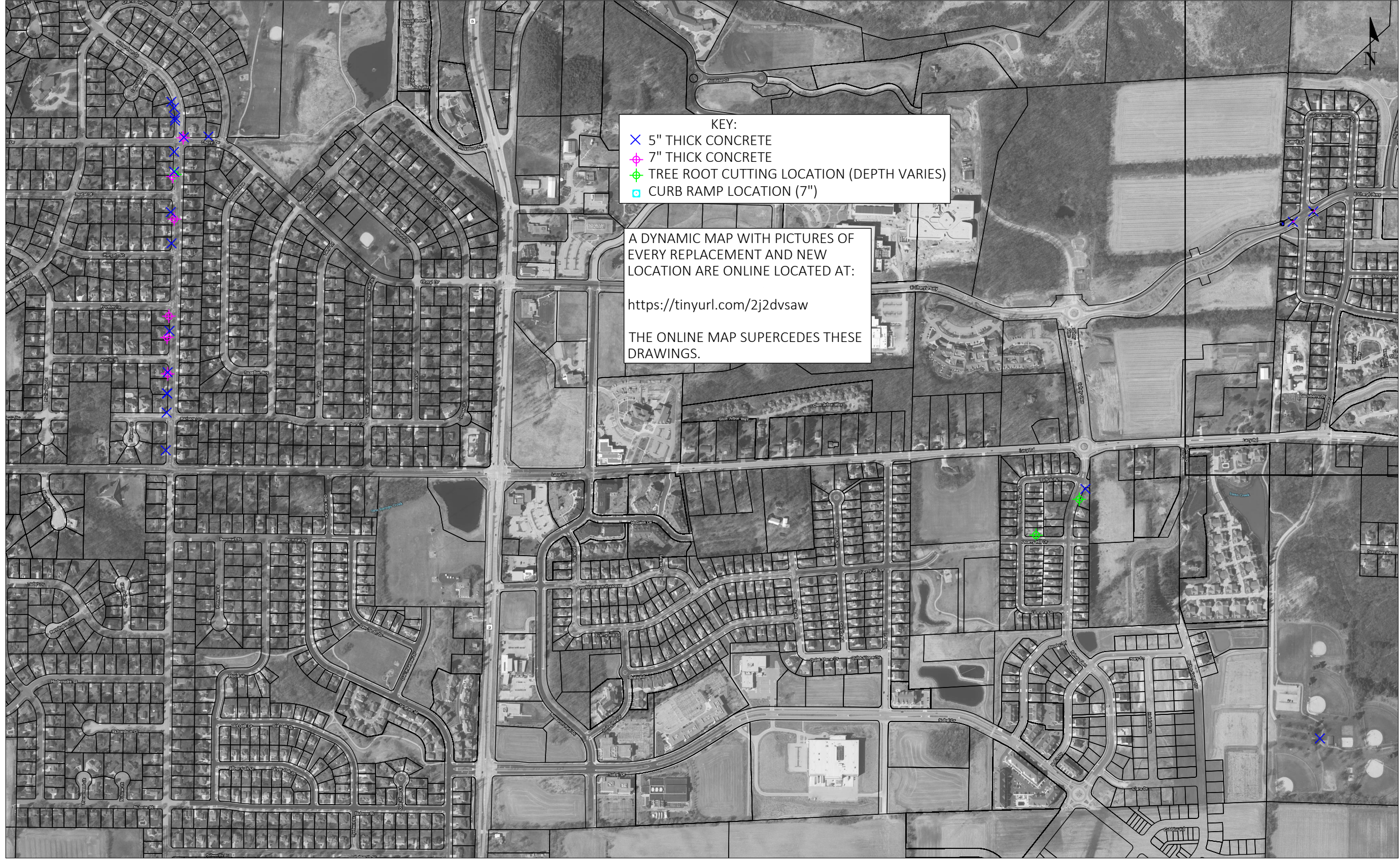
SHEET NO.:

1



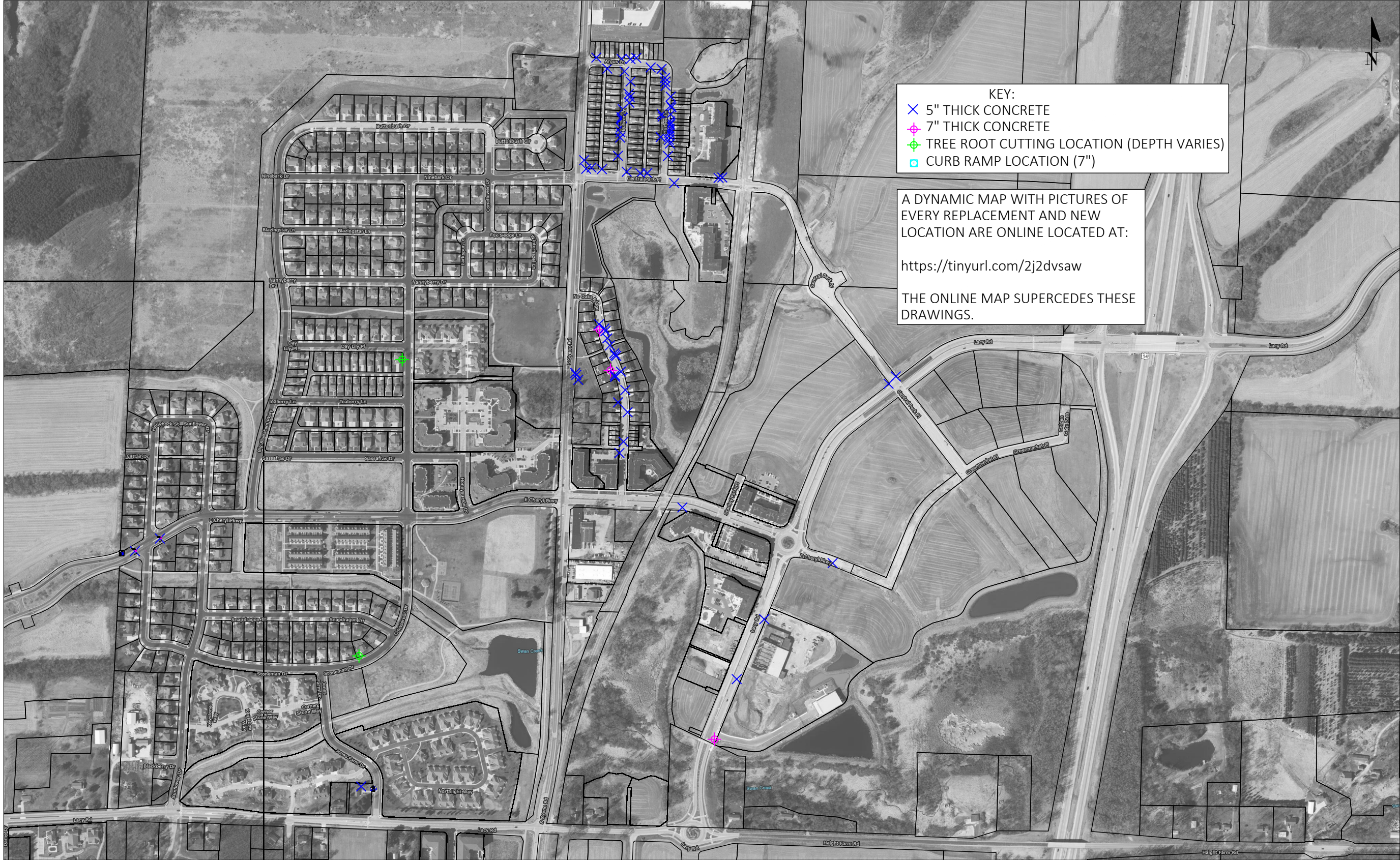
KEY:
 X 5" THICK CONCRETE
 ◆ 7" THICK CONCRETE
 ⊕ TREE ROOT CUTTING LOCATION (DEPTH VARIES)
 □ CURB RAMP LOCATION (7")

A DYNAMIC MAP WITH PICTURES OF EVERY REPLACEMENT AND NEW LOCATION ARE ONLINE LOCATED AT:
<https://tinyurl.com/2j2dvsaw>
 THE ONLINE MAP SUPERCEDES THESE DRAWINGS.



KEY:
 X 5" THICK CONCRETE
 ◆ 7" THICK CONCRETE
 ◆ TREE ROOT CUTTING LOCATION (DEPTH VARIES)
 □ CURB RAMP LOCATION (7")

A DYNAMIC MAP WITH PICTURES OF EVERY REPLACEMENT AND NEW LOCATION ARE ONLINE LOCATED AT:
<https://tinyurl.com/2j2dvsaw>
 THE ONLINE MAP SUPERCEDES THESE DRAWINGS.



- KEY:
- ✕ 5" THICK CONCRETE
 - ◆ 7" THICK CONCRETE
 - ⊕ TREE ROOT CUTTING LOCATION (DEPTH VARIES)
 - ◻ CURB RAMP LOCATION (7")

A DYNAMIC MAP WITH PICTURES OF EVERY REPLACEMENT AND NEW LOCATION ARE ONLINE LOCATED AT:
<https://tinyurl.com/2j2dvsaw>
 THE ONLINE MAP SUPERCEDES THESE DRAWINGS.

2024 SIDEWALK AND RELATED CONCRETE
 EAST END

DRAWN BY: ZJL
 DATE: 05/29/2024

SHEET NO.:
 5



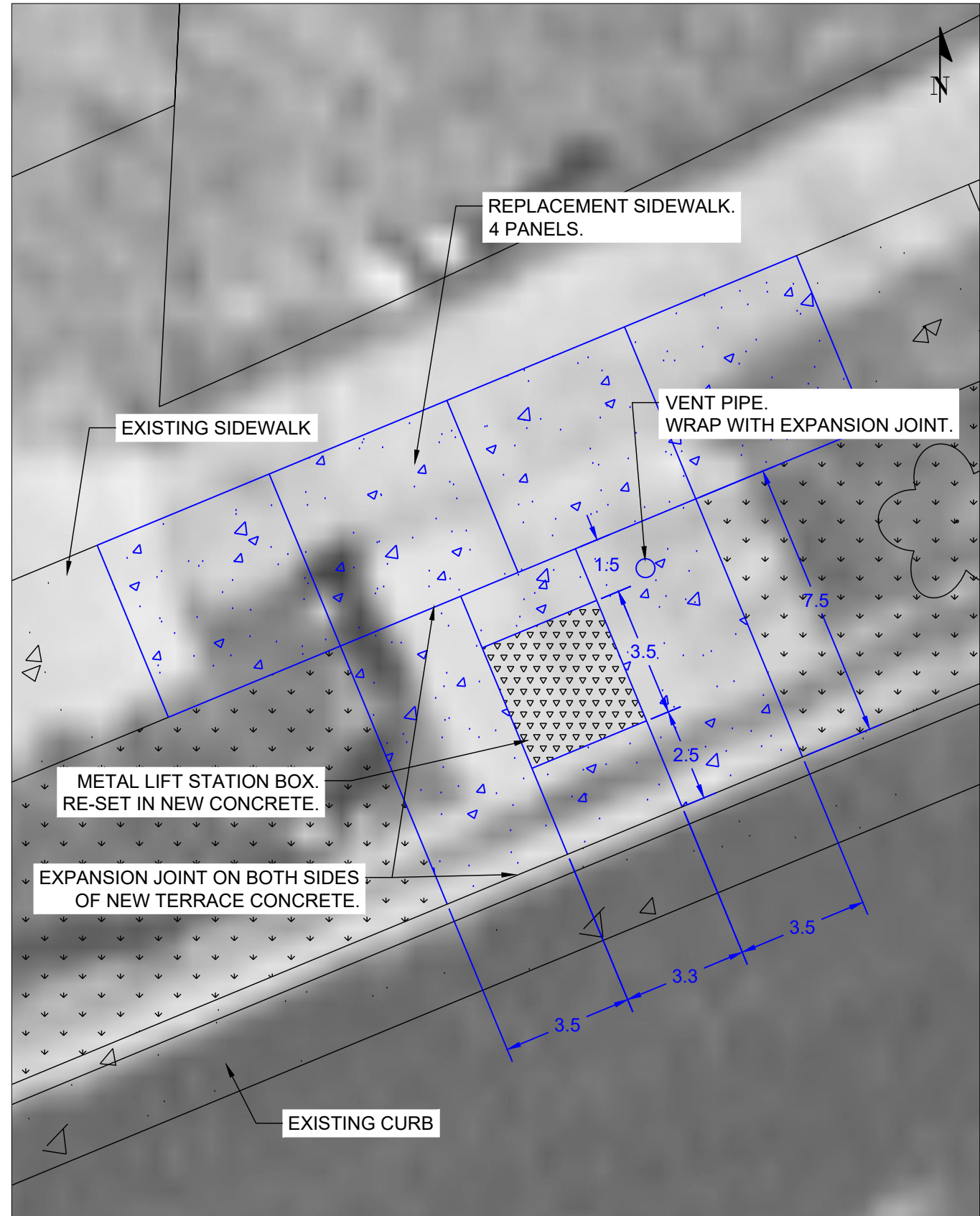
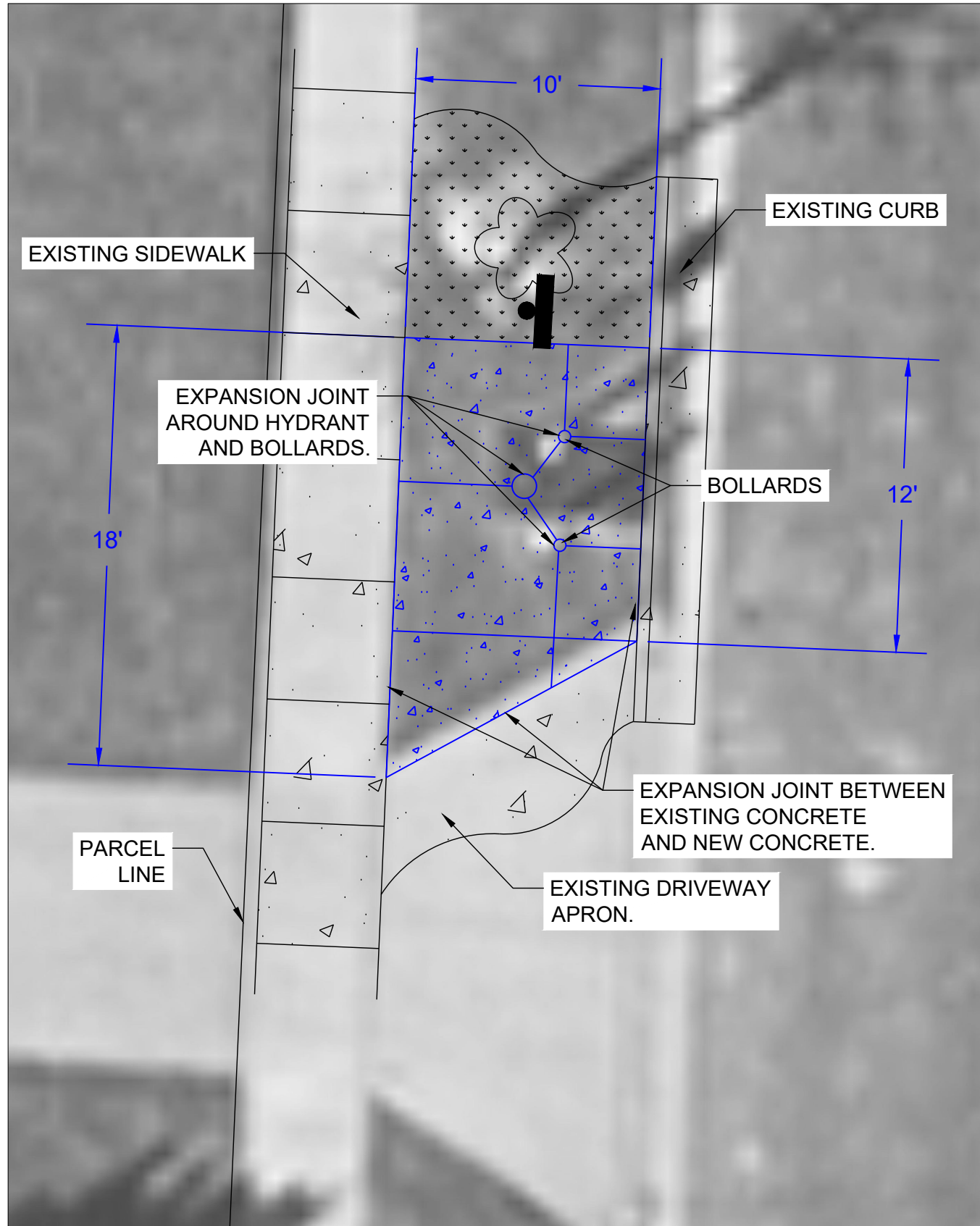
A DYNAMIC MAP WITH PICTURES OF EVERY REPLACEMENT AND NEW LOCATION ARE ONLINE LOCATED AT:

<https://tinyurl.com/2j2dvsaw>

THE ONLINE MAP SUPERCEDES THESE DRAWINGS.

KEY:
X 5" THICK CONCRETE
+ 7" THICK CONCRETE
+ TREE ROOT CUTTING LOCATION (DEPTH VARIES)
C CURB RAMP LOCATION (7")

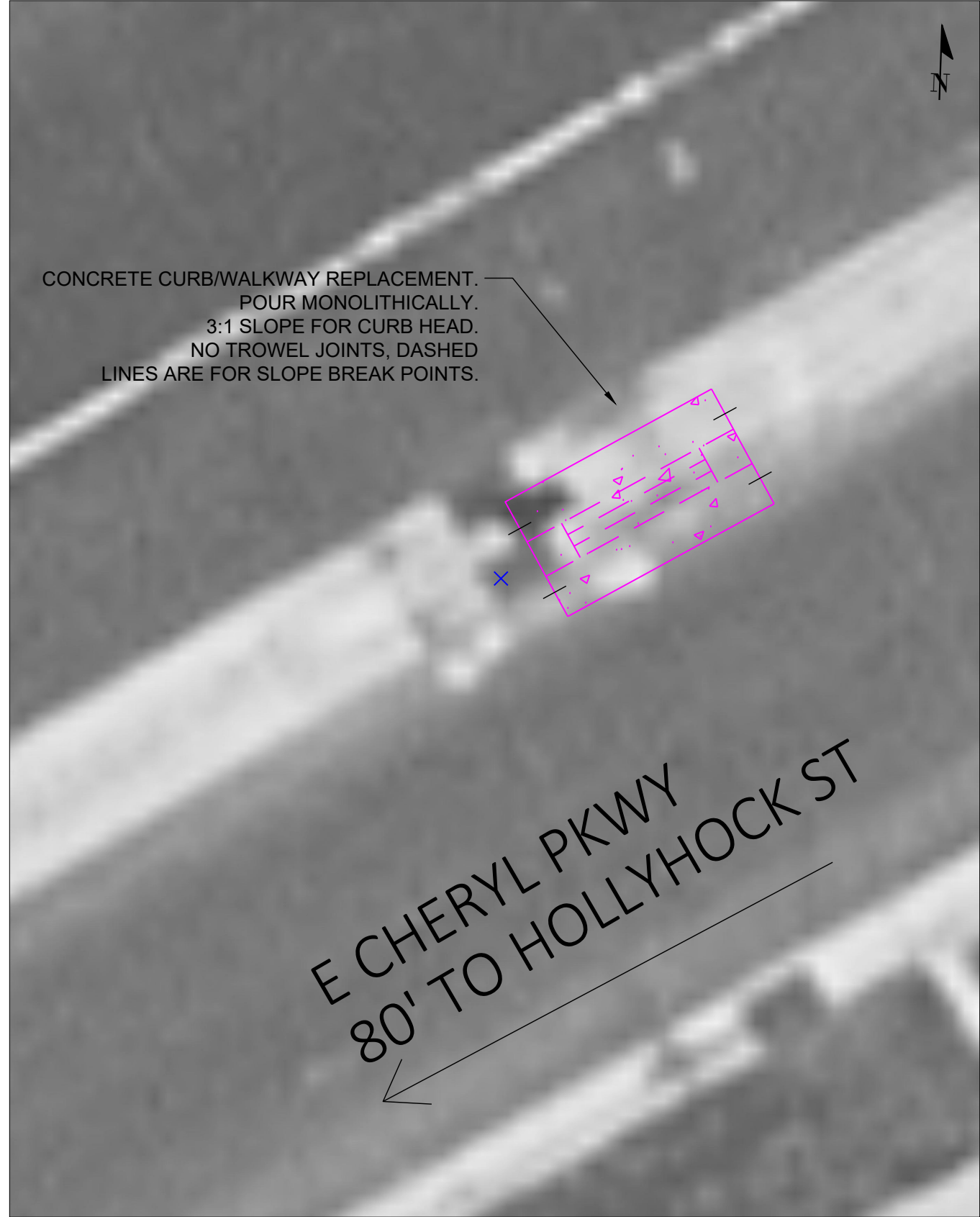






CONCRETE RIBBON CURB/WALKWAY REPLACEMENT.
 POUR MONOLITHICALLY.
 DOWEL INTO ADJACENT CURB.
 NO TROWEL JOINTS, DASHED
 LINES ARE FOR SLOPE BREAK POINTS.

E CHERYL PKWY
 90' TO HOLLYHOCK ST



CONCRETE CURB/WALKWAY REPLACEMENT.
 POUR MONOLITHICALLY.
 3:1 SLOPE FOR CURB HEAD.
 NO TROWEL JOINTS, DASHED
 LINES ARE FOR SLOPE BREAK POINTS.

E CHERYL PKWY
 80' TO HOLLYHOCK ST