

In This Issue

1. [Fitchburg Draft Sustainability Plan Released](#)
2. [EV 101 at Fitchburg Public Library](#)
3. [More Bicycle-Friendly Businesses in Fitchburg](#)
4. [Free Native Plants for Schools and Communities](#)
5. [Pollinator Week](#)
6. [June Observances](#)
7. [Upcoming Events](#)

Fitchburg Draft Sustainability Plan Released

<https://www.fitchburgwi.gov/2877/Fitchburg-Sustainability-Plan>

Phase 2 of Fitchburg’s Sustainability Plan is now complete, with the City, its volunteer planning team, and consultant Pale Blue Dot having created a draft plan for public and municipal review.



Whether you had a chance to fill out the survey or contribute to the first two phases in other ways, we would love to get your feedback now that the draft plan is in place. You can find the draft plan on the project website at <https://palebluedot.llc/fitchburg-sustainability>, or through the same link on the City’s page linked above.



Thanks to everybody who completed the survey or otherwise has participated in the process so far! Now please take a chance to review the [Draft Sustainability Plan](#), and provide feedback on individual topic areas or the plan as a whole, using forms on each section as you click through them. As always, you can also reach out to the City’s Sustainability Specialist (phil.grupe@fitchburgwi.gov) if you have questions or would like to offer input, and look for coming public sessions where the draft plan will be presented and time set aside for questions and other feedback.

EV 101 at Fitchburg Public Library

Interested in learning more about Electric Vehicles? Join Fitchburg's Resource Conservation Commission at the Fitchburg Public Library (5530 Lacy Dr.) on Wed., June 12, from 6:00-7:30 PM. Meet inside for a short presentation, learn the basics about EVs, and then talk with a dozen EV owners and check out their vehicles that will be parked in the Library parking lot.



More Bicycle-Friendly Businesses in Fitchburg

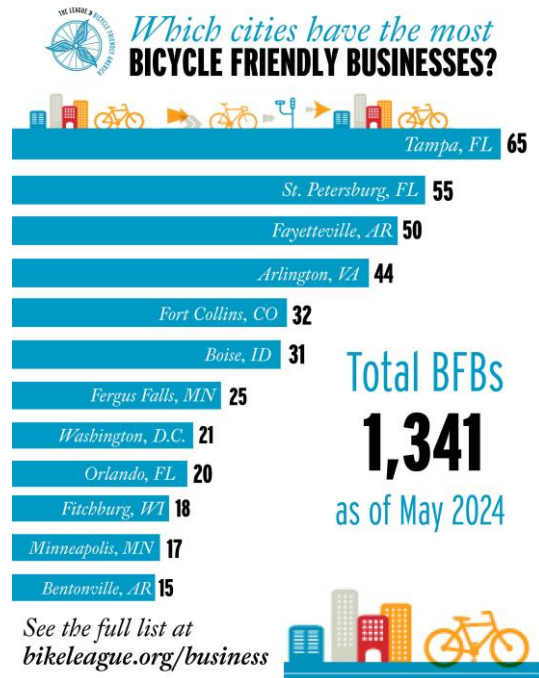
From Bike Fitchburg's media release at <https://bikefitchburg.org/images/Media%20release%202024-05-09.pdf>

On May 9, the League of American Bicyclists recognized five Fitchburg businesses and non-profits with Bicycle Friendly Business (BFB) awards, earning them a place alongside more than 1,300 organizations across the country contributing to the movement to build a more Bicycle Friendly America.

Congratulations to the five new Bronze-designated Fitchburg businesses: The Boys and Girls Club of Dane County McKenzie Regional Workforce Center, Chocolate Shoppe Ice Cream Co., Encompass Health Rehabilitation Hospital of Fitchburg, Hop Haus Fitchburg Brewpub, and Rutabaga Paddlesports. The Thirsty Goat also received an honorable mention.

"We're proud to celebrate this round of new and renewing Bicycle Friendly Businesses who are investing their resources to not only build up bicycling in the workplace but in their communities as well," said Bill Nesper, executive director of the League of American Bicyclists. "It takes collaboration to build an America where every person can safely and easily choose to bike, and we applaud these Fitchburg businesses pedaling alongside us to power this movement."

With these five new designees, the number of bicycle-friendly businesses as recognized by the League of American Bicyclists is at 18 (including the Gold-designated City of Fitchburg Civic Campus), placing 10th in the nation for cities of all sizes:



Free Native Plants for Schools and Communities

<https://lwr.danecounty.gov/grants-and-costshare/free-plants>

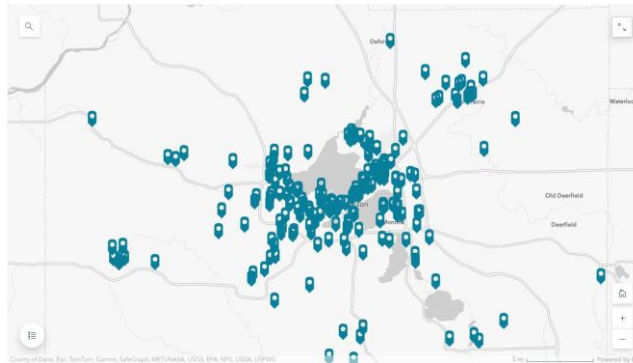
Native plants have tremendous water quality benefits and increase habitat and food sources for pollinators. Because of this, the Dane County Land and Water Resources Department has started a native plant growing program to provide a source of free native plants to help schools and community groups in Dane County. These plants will be available in spring and summer each year. Spring plants are donated from community members through the Plant Dane! plant sale and fall plants are grown by local volunteers.



Since the program began in 2016, more than 36,000 plants have been distributed to 178 different groups, including schools, neighborhood associations and community centers.

Find eligibility information, application instructions, and more at <https://lwr.danecounty.gov/grants-and-costshare/free-plants>, and submit your application by July 19!

For an interactive story map, or to learn more about volunteering to grow plants that will be distributed through this program, click [this program link](#) or the map image below.



Pollinator Week

<https://www.pollinator.org/pollinator-week>



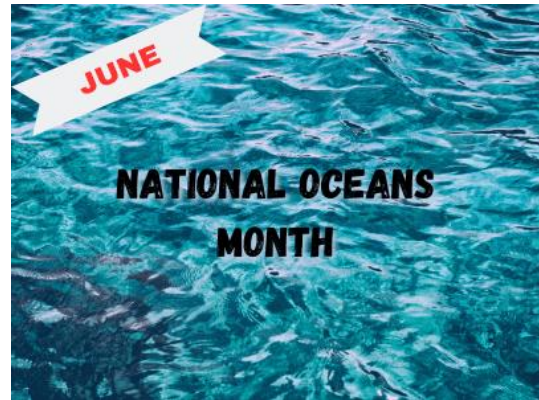
With the conclusion of Low-Mow May, a common question is, “what can I do now to keep helping native species that extends beyond the month of May?” This is a great topic to think about, as native species and ecosystems could use our help throughout the year! The City’s website has information and resources to help you think about benefiting native species throughout the year: <https://www.fitchburgwi.gov/2861/Natural-Lawns-and-Low-Mow-May>. Many of the practices you might have employed during May are appropriate year-round, from increasing the

number of native plant species on your property to reducing your mowing frequency to setting up bee hotels to cutting back on your use of chemical pesticides/herbicides/fertilizers.

For another observance celebrating our invertebrate neighbors, as well as another fantastic list of resources for how you can benefit local pollinators and other species, the international organization Pollinator Partnership celebrates Pollinator Week the third week of June each year, which this year is June 17-23.

“Pollinator Week 2024 is a celebration of the vital role that pollinators play in our ecosystems, economies, and agriculture. Under the inspiring theme “Vision 2040: Thriving ecosystems, economies, and agriculture,” this year’s event urges us to envision a future where pollinators not only survive but thrive ... Popular events include planting for pollinators, hosting garden tours, participating in online bee and butterfly ID workshops, and so much more. However you choose to celebrate this year, be sure to register your event on [our online map], and share your story with us by tagging us on social media using the hashtag #PollinatorWeek.”

June Observances



Upcoming Events

Fitchburg Draft Sustainability Plan Open House and Community Sessions

TBD

keep an eye on <https://www.fitchburgwi.gov/2877/Fitchburg-Sustainability-Plan> for updates

Sustain Dane Recycling Stewards training

Thursdays, July 11 and 18, 6:30-8:00pm

<https://sustaindane.org/eventbrite-event/recycle-better-2/>

Other Local Events

UW Clean Energy Community Initiative: <https://ceci.wisc.edu/events/category/ceci-seminar-series/>

Upper Sugar River Watershed Association:
https://uppersugar.org/Calendar_of_Events



Dane County Land & Water Resources Department:
<https://lwr.d.countyofdane.com/Events?id=12>

Rock River Coalition: <https://rockrivercoalition.org/events/month/>

UW Nelson Institute for Environmental Studies:
<https://nelson.wisc.edu/environmental-events/>

Share the News

Tell your friends to subscribe to Green Fitchburg on the city website
<http://www.fitchburgwi.gov/list.aspx> > Green Fitchburg

- a. Visit Fitchburg's "Notify Me®" web page:
<http://www.fitchburgwi.gov/list.aspx>
- b. Type your email address in the box and select "Sign In"
- c. To receive text messages enter your phone number and select "Save"
- d. Click  (to subscribe/unsubscribe to emails) and/or  (to subscribe/unsubscribe) next to the lists to which you wish to subscribe / unsubscribe (e.g. "Green Fitchburg" is the mailing list for environmentally friendly suggestions or events)

Please contact Phil Grupe, Sustainability Specialist, at phil.grupe@fitchburgwi.gov or (608) 270-4259, if you have any questions, comments, and/or suggestions for future Green E-News topics.

