



City of Fitchburg  
 Planning/Zoning Department  
 5520 Lacy Road  
 Fitchburg, WI 53711  
 (608-270-4200)

# ARCHITECTURAL & DESIGN REVIEW APPLICATION

**Applicant/Contact Person:** Sarah Church (Vierbicher)

**Address:** 999 Fourier Drive, Suite 201 **Phone Number of Contact Person:** 608-821-3943

**City, State, Zip Code:** Madison, WI 53717 **Email of Contact Person:** schu@vierbicher.com

**Project Address:** 5535 Nobel Drive **Lot:** \_\_\_\_\_ **Subdivision:** \_\_\_\_\_

**Project Type:** \_\_\_\_\_ **Multi-Family** \_\_\_\_\_ **Commercial** \_\_\_\_\_ **Industrial** \_\_\_\_\_ **Rehab. Hospital** \_\_\_\_\_ **Other**  
 **New** \_\_\_\_\_ **Addition**

**Impervious Surface Ratio (ISR):** 53.3% (City Standard: maximum 65% ISR)

All items listed below must be included with the application to be considered complete. If an item is not included with the application, the applicant must provide in writing the basis for not including it. Building and site plans submitted to the Fitchburg Plan Commission for architectural and design review shall contain the following information:

**Site Data:**

- 1. Lot or property dimensions.
- 2. Orientation (to north).
- 3. Adjacent highways, roads, drive, etc.
- 4. Existing natural features (rivers, ponds, wetlands).
- 5. Existing buildings and/or improvements.
- 6. Existing and proposed site drainage.
- 7. Utility plans, including main/lateral sizes and existing fire hydrants on site or within 300 feet of the site
- 8. ISR shall be indicated on all plans.
- 9. Stormwater management plans and details, including grading plan.
- 10. Lighting plan in footcandles and light fixture cut sheets.

**Building:**

- 1. Building size, configuration and orientation.
- 2. Distance from lot lines.
- 3. Distance from other buildings, improvements and natural features.
- 4. Location of well, septic tank, drainfield, etc. (if applicable)
- 5. Additional proposed additions or new structures, including trash/recycling enclosure(s).
- 6. Construction type (wood frame, structural steel, etc.).
- 7. Foundation type (full basement, slab on grade, etc.).
- 8. Number of levels.
- 9. Siding/exterior covering type, color, texture, etc.
- 10. Roof type (gable, hip, shed, flat, etc.) and pitch.
- 11. Roofing material type, color, texture, etc.
- 12. Exterior door and window location, size, type, etc.
- 13. Fire protection sprinklers or fire alarm systems.

**Ingress, Egress, Parking:**

- 1. Location of highway and road access points.
- 2. Location, size, configuration of drivers and walks.
- 3. Number, size, location of parking spaces.
- 4. Location of handicapped parking and accessible building entrances.
- 5. Bicycle rack(s).

**Landscaping:**

- 1. Location, species, size of existing trees, shrubs, and plantings.
- 2. Location, species, size of proposed plantings.
- 3. Location and size of all paved, seeded/sodded and gravelled areas.
- 4. Location of all retaining walls, fences, berms and other landscape features.

**\*It is highly recommended that an applicant hold at least one neighborhood meeting prior to submitting an ADR application to identify any concerns or issues of surrounding residents.**

The preceding information is considered to be the minimum information for submission, and the City may require additional information for its review. Any interpretations provided by city officials as the result of submitting the attached information are based on the submitted plans, and any plan changes, may affect the interpretations.

It is the responsibility of the owner/applicant to insure compliance with all local and state requirements. The below signed applicant acknowledges the above information and hereby submits the attached information for the City's Architectural and Design Review Process.

Signed: *Sarah V. Church* Date: 8/22/22  
Applicant or Authorized Agent

**\*\*\* Application shall be accompanied by one (1) sets of full-size plans, two (2) sets no larger than 11"x17", and one (1) pdf document of the complete submittal to [planning@fitchburgwi.gov](mailto:planning@fitchburgwi.gov). Applications are due at least 4 weeks prior to the desired Plan Commission Meeting. The time frame assumes a complete set of plans is provided, and if it is not provided the Plan Commission date will be adjusted.**

---

---

**FOR CITY USE ONLY**

Date Received: \_\_\_\_\_ Plan Commission Date: \_\_\_\_\_

**Comments:**

---

---

---

---

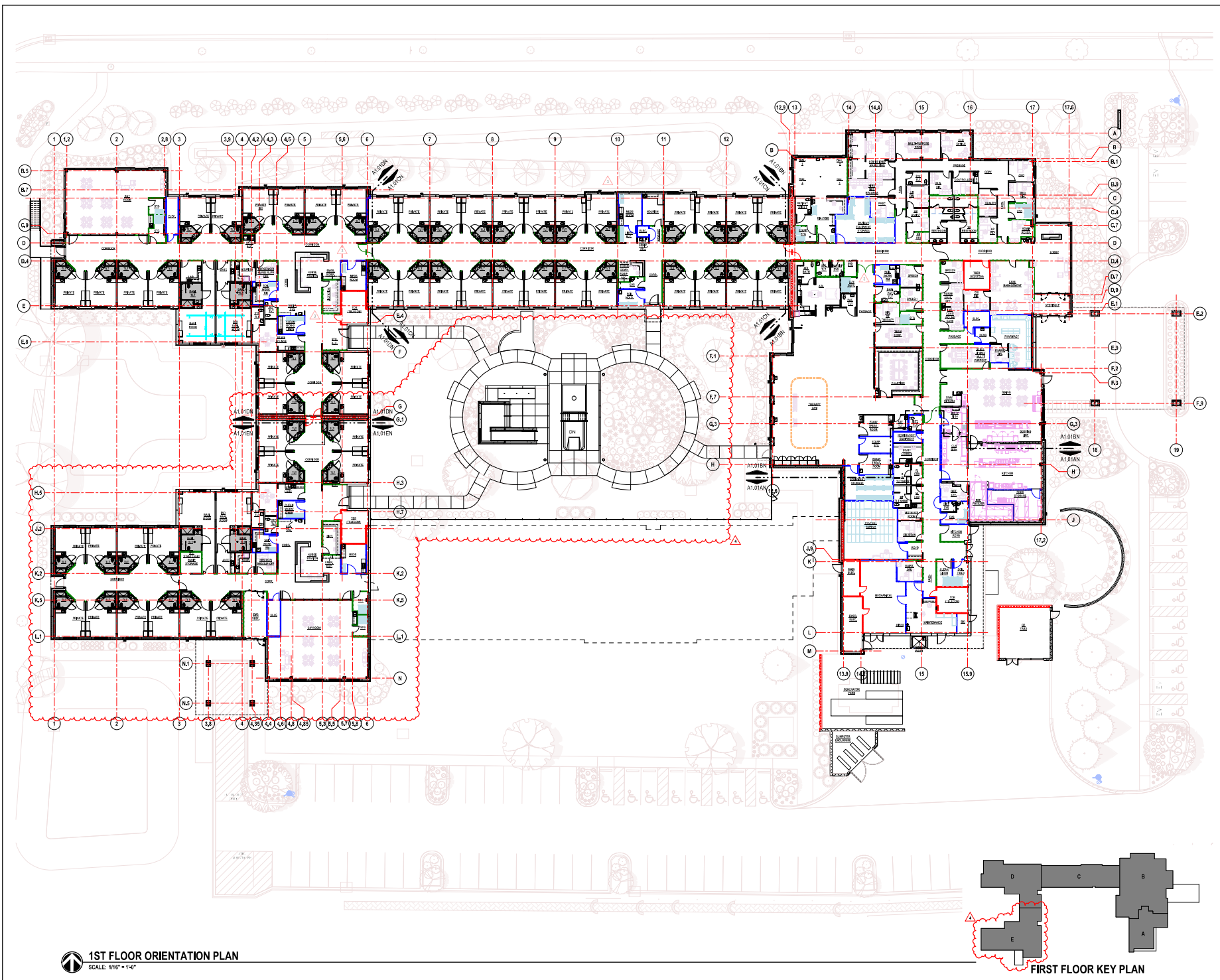
---

---

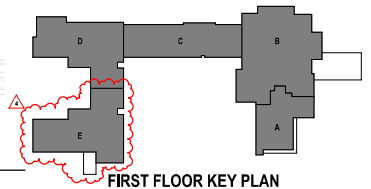
SHEET HAS BEEN OPTIMIZED FOR COLOR PRINTING

SHEET HAS BEEN OPTIMIZED FOR COLOR PRINTING

- GRAPHIC SCALE: 1/8" = 1'-0"
- GRAPHIC SCALE: 1/4" = 1'-0"
- GRAPHIC SCALE: 3/8" = 1'-0"
- GRAPHIC SCALE: 1/2" = 1'-0"
- GRAPHIC SCALE: 5/8" = 1'-0"
- GRAPHIC SCALE: 3/4" = 1'-0"
- GRAPHIC SCALE: 7/8" = 1'-0"
- GRAPHIC SCALE: 1" = 1'-0"



**1ST FLOOR ORIENTATION PLAN**  
SCALE: 1/8" = 1'-0"



**ESA**  
Earl Swenson Associates, Inc.  
1033 Swenson Street  
Suite 600  
Nashville, Tennessee 37203  
615-255-8445

This drawing and the design shown is the property of the architect. The reproduction, copying or use of the drawing without the written consent is prohibited and any infringement of it is subject to legal action.  
© Earl Swenson Associates, Inc. 2020



**NEW REHABILITATION FACILITY FOR  
Encompass Rehabilitation Hospital of Fitchburg**  
Fitchburg, WI

DOCUMENT CHANGES	Date
REV 3 - EHC UPDATES	2022-05-13
REV 4 - 16 BED EXP.	2022-06-21

Issue Description	CONS. DOCUMENTS
Original Issue Date	2024/14/20
Project No	2024/10
Drawn By	WJK
Checked By	CS
Drawing Title	

ORIENTATION PLAN

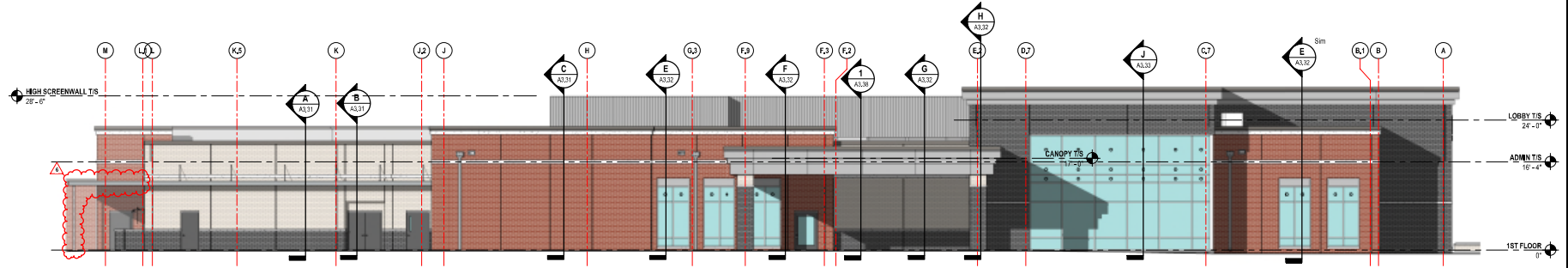
Sheet Number  
**A1.01**



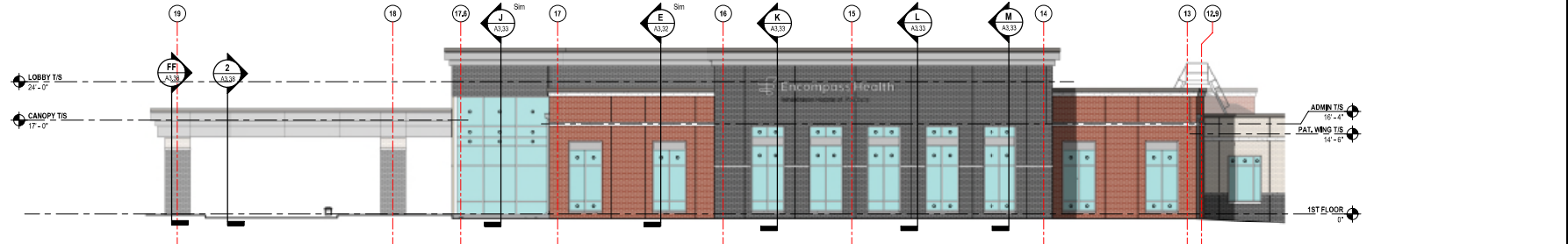
SHEET HAS BEEN OPTIMIZED FOR COLOR PRINTING

SHEET HAS BEEN OPTIMIZED FOR COLOR PRINTING

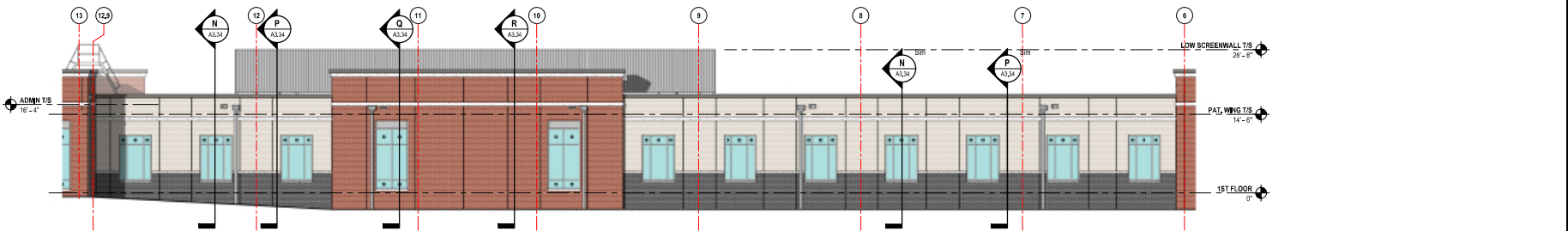
GRAPHIC SCALE: 1/32" = 1'-0"  
 GRAPHIC SCALE: 1/16" = 1'-0"  
 GRAPHIC SCALE: 3/32" = 1'-0"  
 GRAPHIC SCALE: 1/8" = 1'-0"  
 GRAPHIC SCALE: 3/16" = 1'-0"  
 GRAPHIC SCALE: 1/4" = 1'-0"  
 GRAPHIC SCALE: 3/8" = 1'-0"  
 GRAPHIC SCALE: 1/2" = 1'-0"  
 GRAPHIC SCALE: 5/8" = 1'-0"  
 GRAPHIC SCALE: 3/4" = 1'-0"  
 GRAPHIC SCALE: 7/8" = 1'-0"  
 GRAPHIC SCALE: 1" = 1'-0"



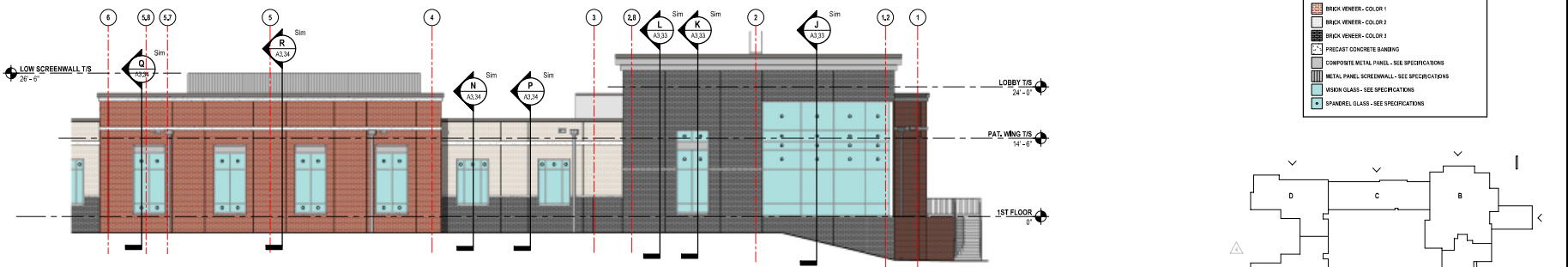
**(A) EAST ELEVATION**  
 SCALE: 1/8" = 1'-0"



**(B) NORTH ELEVATION - PART B**  
 SCALE: 1/8" = 1'-0"

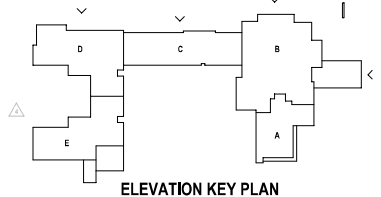


**(C) NORTH ELEVATION - PART C**  
 SCALE: 1/8" = 1'-0"



**(D) NORTH ELEVATION - PART D**  
 SCALE: 1/8" = 1'-0"

EXTERIOR MATERIAL LEGEND	
[Brick symbol]	BRICK VENEER - COLOR 1
[Brick symbol]	BRICK VENEER - COLOR 2
[Brick symbol]	BRICK VENEER - COLOR 3
[Concrete symbol]	PREFCAST CONCRETE BANKING
[Metal symbol]	COMPOSITE METAL PANEL - SEE SPECIFICATIONS
[Metal symbol]	METAL PANEL SCREENWALL - SEE SPECIFICATIONS
[Glass symbol]	MIRROR GLASS - SEE SPECIFICATIONS
[Glass symbol]	SPANDREL GLASS - SEE SPECIFICATIONS



Revision	Description	Date
REV 4	16 BED EXP.	2022-06-21
REV 5		2022-06-03

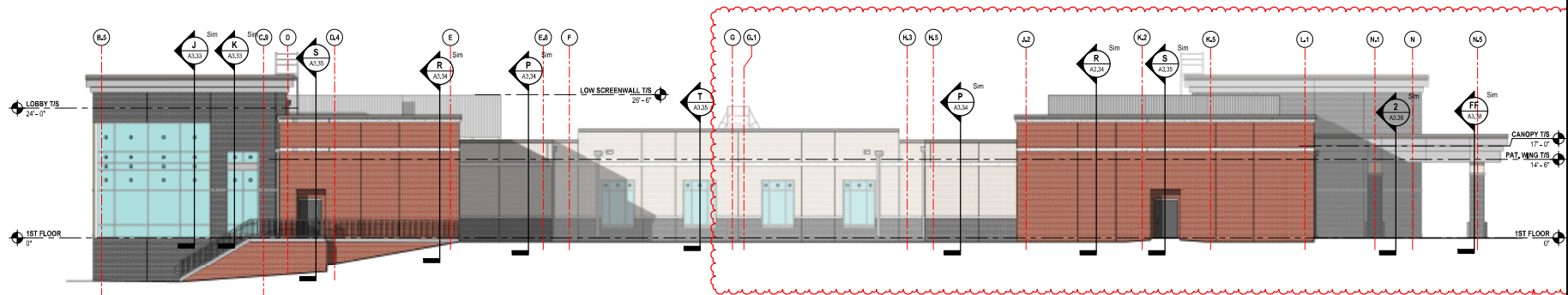
Issue Description	CONS. DOCUMENTS
Original Issue Date	2022-04-03
Project No.	2204103
Drawn By	WJH
Checked By	CS

**EXTERIOR ELEVATIONS**

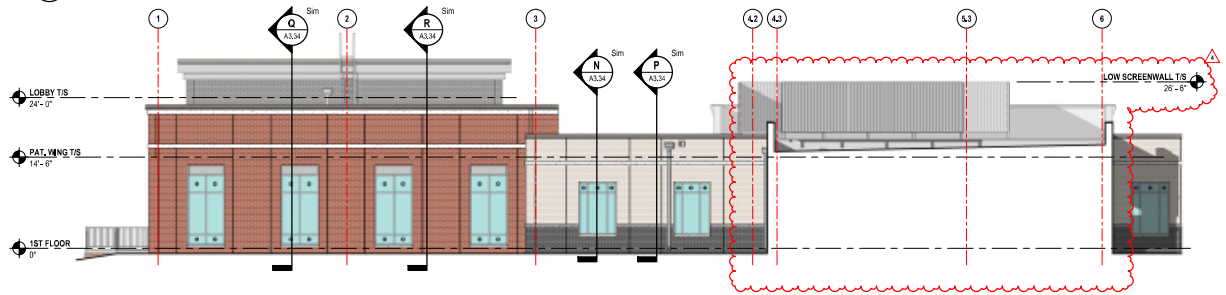
SHEET HAS BEEN OPTIMIZED FOR COLOR PRINTING

SHEET HAS BEEN OPTIMIZED FOR COLOR PRINTING

GRAPHIC SCALE: 1/8" = 1'-0"  
GRAPHIC SCALE: 1/8" = 1'-0"  
GRAPHIC SCALE: 3/32" = 1'-0"  
GRAPHIC SCALE: 3/16" = 1'-0"  
GRAPHIC SCALE: 1/4" = 1'-0"  
GRAPHIC SCALE: 3/8" = 1'-0"  
GRAPHIC SCALE: 1/2" = 1'-0"  
GRAPHIC SCALE: 3/4" = 1'-0"  
GRAPHIC SCALE: 1" = 1'-0"  
6/23/2022 10:21 AM W:\Projects\2022\16 Bed Bed Exp\16 Bed Bed Exp\16 Bed Bed Exp.dwg



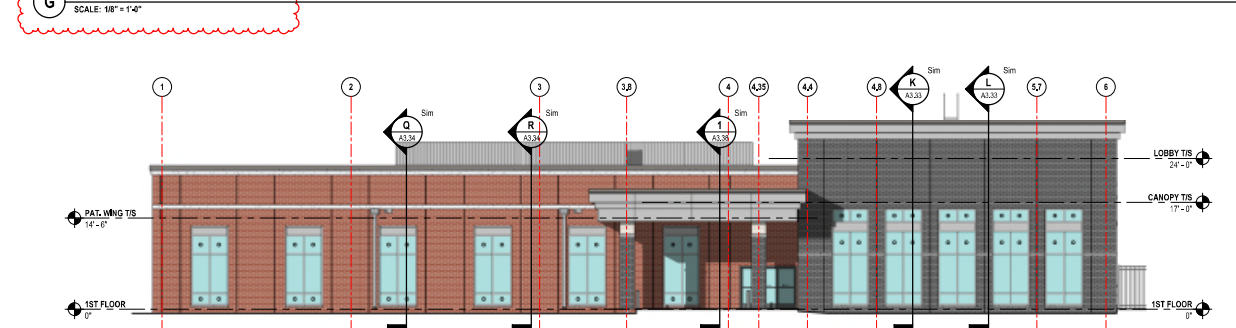
**E WEST ELEVATION - PART D & E**  
SCALE: 1/8" = 1'-0"



**F SOUTH ELEVATION - PART D**  
SCALE: 1/8" = 1'-0"

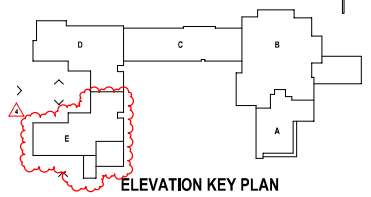


**G NORTH ELEVATION - PART E**  
SCALE: 1/8" = 1'-0"



**H SOUTH ELEVATION - PART E**  
SCALE: 1/8" = 1'-0"

EXTERIOR MATERIAL LEGEND	
[Pattern]	BRICK VENEER - COLOR 1
[Pattern]	BRICK VENEER - COLOR 2
[Pattern]	BRICK VENEER - COLOR 3
[Pattern]	PRECAST CONCRETE BANDING
[Pattern]	COMPOSITE METAL PANEL - SEE SPECIFICATIONS
[Pattern]	METAL PANEL SCREENWALL - SEE SPECIFICATIONS
[Pattern]	VIBRON GLASS - SEE SPECIFICATIONS
[Pattern]	SPANDREL GLASS - SEE SPECIFICATIONS



**ESA**  
Earl Swenson Associates, Inc.  
1033 Deaconbrun Street  
Suite 600  
Nashville, Tennessee 37203  
615-325-8445

This drawing and the design shown is the property of the architect. The reproduction, copying or use of the drawing without the written consent is prohibited and any infringement of this subject to legal action.  
© Earl Swenson Associates, Inc. 2022



**Encompass Health**

**NEW REHABILITATION FACILITY FOR**  
**Encompass Rehabilitation Hospital of Fitchburg**  
Fitchburg, WI

Revision	Description	Date
REV 4 - 16 BED EXP.		2022-06-21

Issue Description	Original Issue Date	Original Issue

Drawn By: [Signature] Checked By: [Signature]  
Drawing Title: EXTERIOR ELEVATIONS  
Sheet Number: **A2.02**



DOCUMENT CHANGES	
Rev	Description
REV 4 - 16	BED EXP. 2022-06-21

Issue Description	CONS. DOCUMENTS
Original Issue Date	2024/11/05
Project No.	2204/10
Drawn By	WJK
Checked By	CS
Drawing Title	

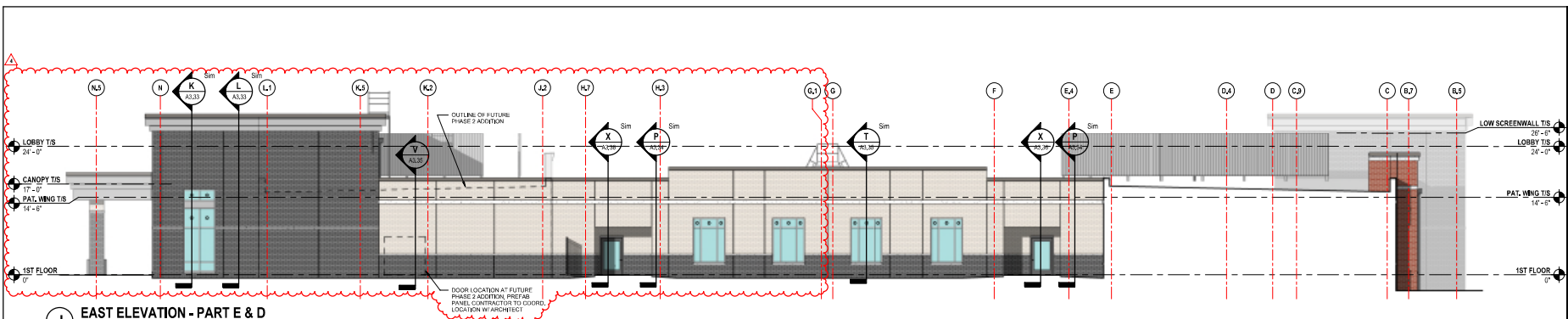
SHEET HAS BEEN OPTIMIZED FOR COLOR PRINTING

GRAPHIC SCALE: 1/32" = 1'-0"

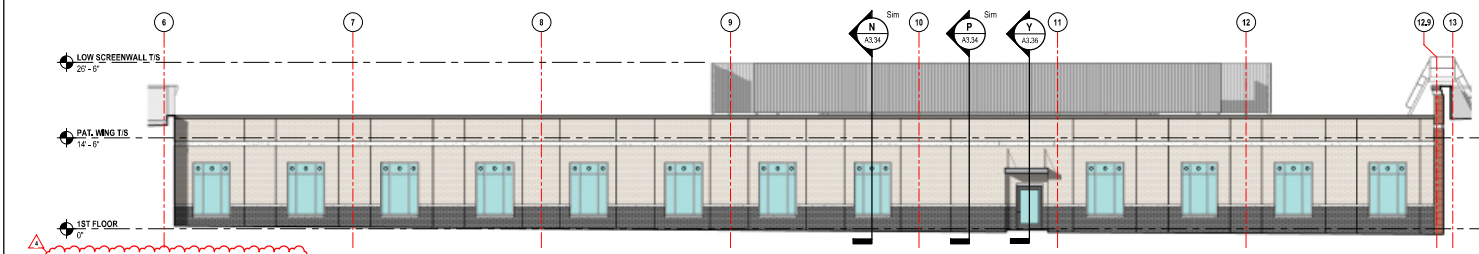
GRAPHIC SCALE: 1/8" = 1'-0"

GRAPHIC SCALE: 3/16" = 1'-0"

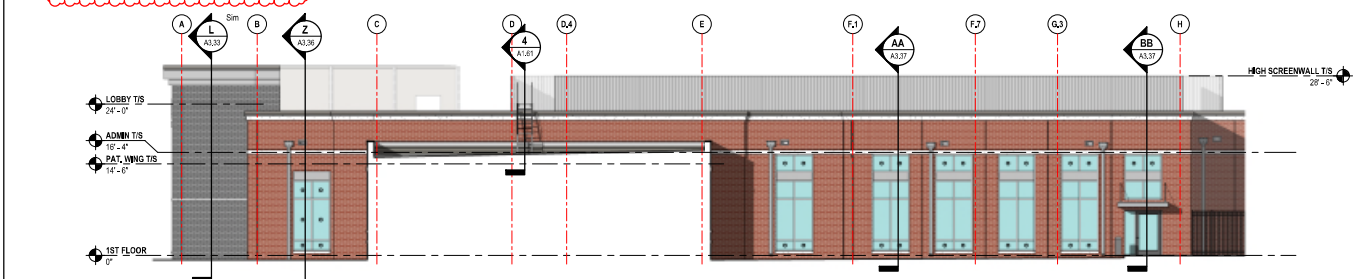
SHEET HAS BEEN OPTIMIZED FOR COLOR PRINTING



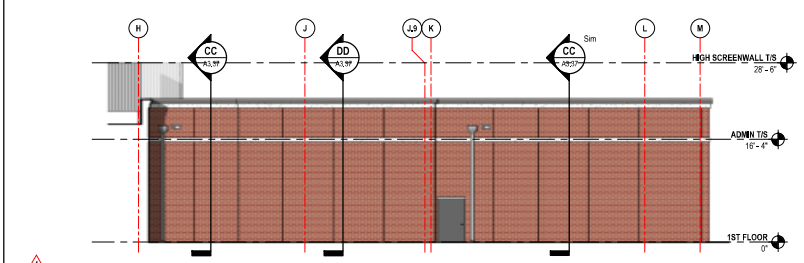
**J EAST ELEVATION - PART E & D**  
SCALE: 1/8" = 1'-0"



**K SOUTH ELEVATION - PART C**  
SCALE: 1/8" = 1'-0"



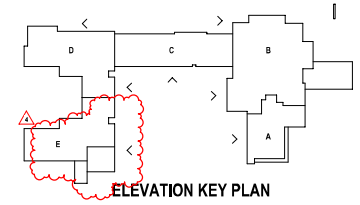
**L WEST ELEVATION - PART B**  
SCALE: 1/8" = 1'-0"



**M WEST ELEVATION - PART A**  
SCALE: 1/8" = 1'-0"

**EXTERIOR MATERIAL LEGEND**

- BRICK VENEER - COLOR 1
- BRICK VENEER - COLOR 2
- BRICK VENEER - COLOR 3
- PRECAST CONCRETE FINISHING
- COMPOSITE METAL PANEL - SEE SPECIFICATIONS
- METAL PANEL SCREENWALL - SEE SPECIFICATIONS
- VISION GLASS - SEE SPECIFICATIONS
- SPANDREL GLASS - SEE SPECIFICATIONS



**ELEVATION KEY PLAN**

SHEET HAS BEEN OPTIMIZED FOR COLOR PRINTING

SHEET HAS BEEN OPTIMIZED FOR COLOR PRINTING

GRAPHIC SCALE: 1/32" = 1'-0"

GRAPHIC SCALE: 1/16" = 1'-0"

GRAPHIC SCALE: 3/32" = 1'-0"

GRAPHIC SCALE: 1/8" = 1'-0"

GRAPHIC SCALE: 3/16" = 1'-0"

GRAPHIC SCALE: 1/4" = 1'-0"

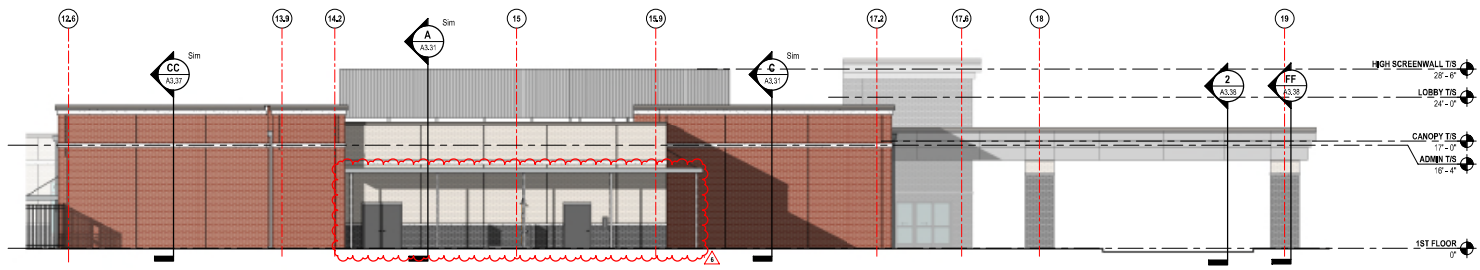
GRAPHIC SCALE: 3/8" = 1'-0"

GRAPHIC SCALE: 1/2" = 1'-0"

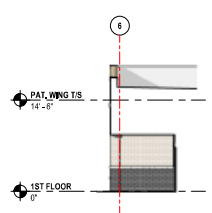
GRAPHIC SCALE: 3/4" = 1'-0"

GRAPHIC SCALE: 1" = 1'-0"

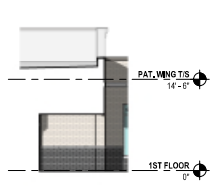
1/4" = 1'-0" (1/4" = 1'-0")



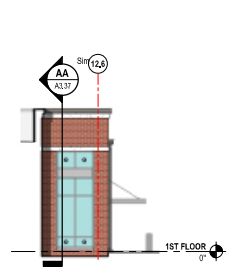
**N SOUTH ELEVATION - PART A**  
SCALE: 1/8" = 1'-0"



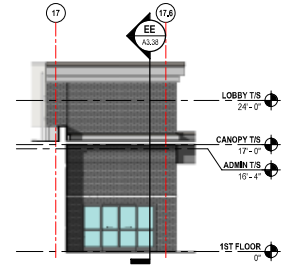
**P NORTH ELEVATION - PART D (PARTIAL)**  
SCALE: 1/8" = 1'-0"



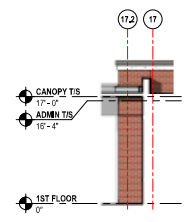
**Q SOUTH ELEVATION - PART D (PARTIAL)**  
SCALE: 1/8" = 1'-0"



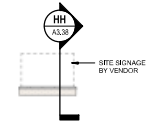
**R NORTH ELEVATION - PART B (PARTIAL)**  
SCALE: 1/8" = 1'-0"



**S SOUTH ELEVATION - ENTRY**  
SCALE: 1/8" = 1'-0"

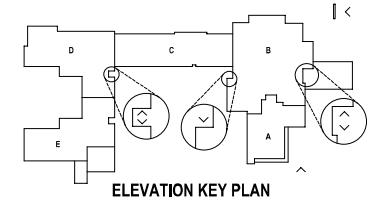


**T NORTH ELEVATION - ENTRY**  
SCALE: 1/8" = 1'-0"



**V SITE SIGN ELEVATION**  
SCALE: 1/8" = 1'-0"

EXTERIOR MATERIAL LEGEND	
	BRICK W/ENER - COLOR 1
	BRICK W/ENER - COLOR 2
	PRECAST CONCRETE BANDING
	COMPOSITE METAL PANEL - SEE SPECIFICATIONS
	METAL PANEL SCREENWALL - SEE SPECIFICATIONS
	VISION GLASS - SEE SPECIFICATIONS
	SPANDELR GLASS - SEE SPECIFICATIONS



**ELEVATION KEY PLAN**

**ESA**  
Earl Swenson Associates, Inc.  
1033 Deenorsman Street  
Suite 600  
Nashville, Tennessee 37203  
615-325-8445

This drawing and the design shown is the property of the architect. The reproduction, copying or use of the drawing without the written consent is prohibited and any infringement shall be subject to legal action.  
© Earl Swenson Associates, Inc. 2020



**Encompass Health**

NEW REHABILITATION FACILITY FOR  
**Encompass Rehabilitation Hospital of Fitchburg**  
Fitchburg, WI

Revision	Description	Date
REV 4 - 16 BED EXP.		2022-06-21
REV 6		2022-06-03

Issue Description	CONS. DOCUMENTS
Original Issue Date	2022-06-21
Project No.	2024-10
Drawn By	WHS
Checked By	CS
Drawing Title	

**EXTERIOR ELEVATIONS**

Sheet Number  
**A2.04**

SHEET HAS BEEN OPTIMIZED FOR COLOR PRINTING

GRAPHIC SCALE: 1/32" = 1'-0"

GRAPHIC SCALE: 1/16" = 1'-0"

GRAPHIC SCALE: 3/32" = 1'-0"

GRAPHIC SCALE: 1/8" = 1'-0"

GRAPHIC SCALE: 3/16" = 1'-0"

GRAPHIC SCALE: 1/4" = 1'-0"

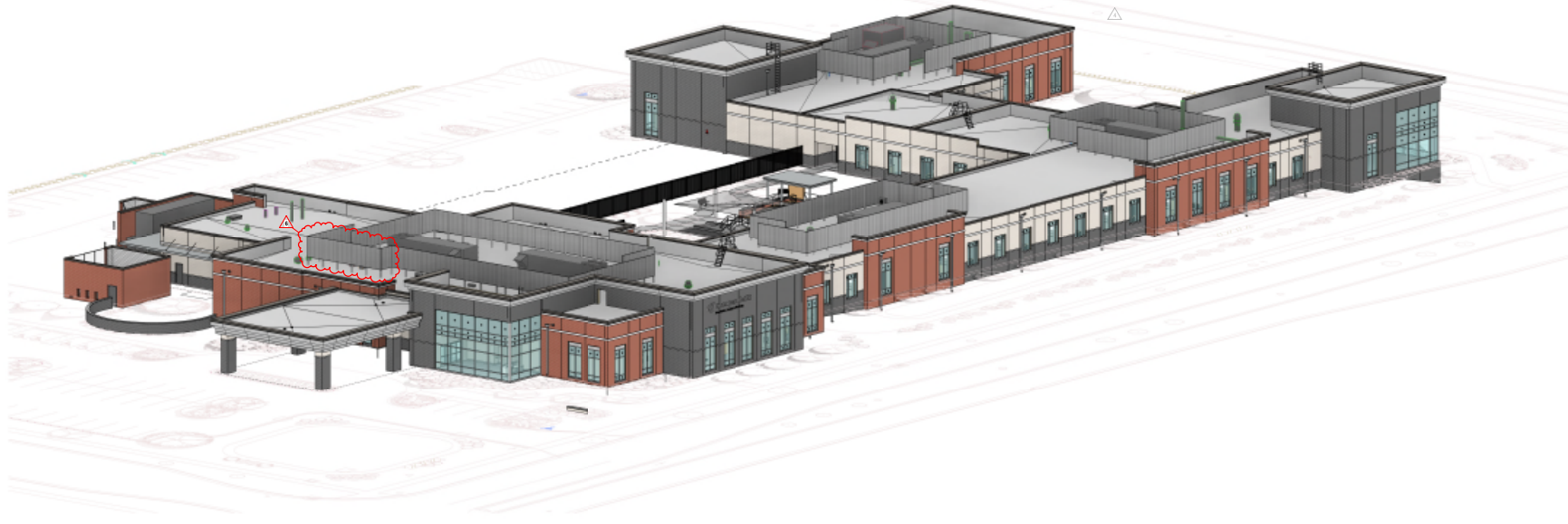
GRAPHIC SCALE: 3/8" = 1'-0"

GRAPHIC SCALE: 1/2" = 1'-0"

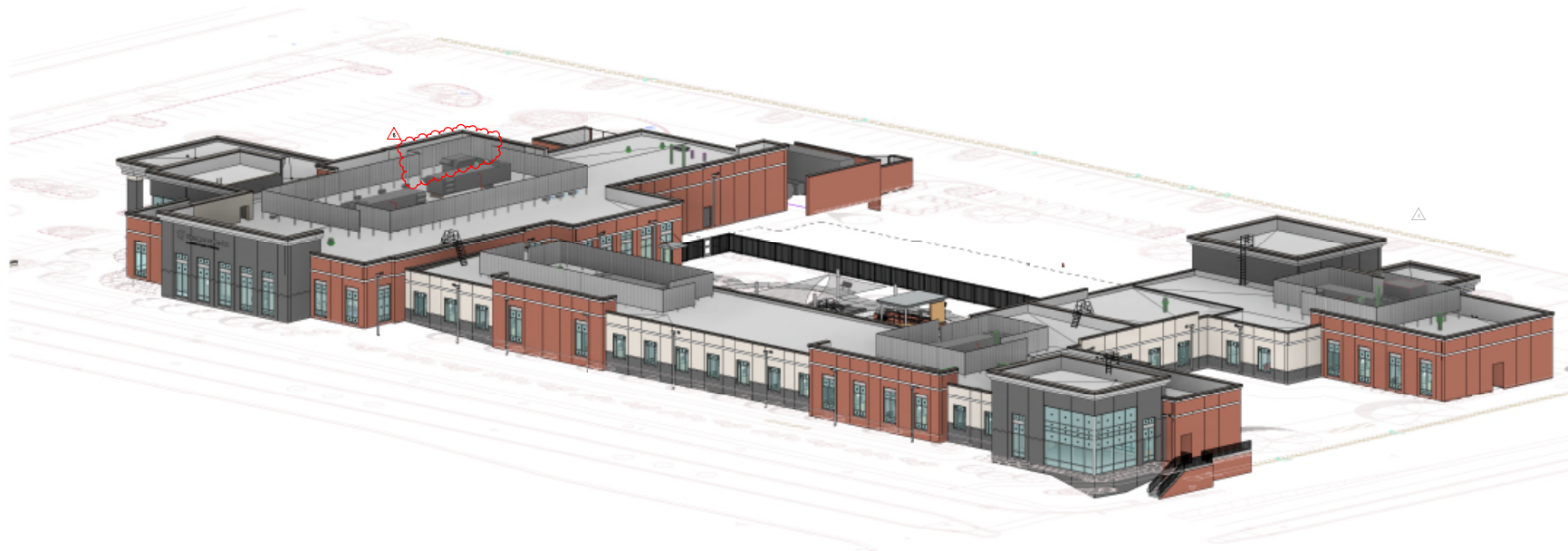
GRAPHIC SCALE: 3/4" = 1'-0"

GRAPHIC SCALE: 1" = 1'-0"

10/18/2022/10:33 - 4:00pm (pm) (thru) P252424\_ExtPerspectives (Rev) (A) (C) (M) (K) (V)



1 NORTHEAST VIEW  
SCALE:



2 NORTHWEST VIEW  
SCALE:

**ESa**  
Earl Swenson Associates, Inc.  
1033 Deenonbreen Street  
Suite 600  
Nashville, Tennessee 37203  
615-325-8445

This drawing and the design shown is the property of the architect. The reproduction, copying or use of the drawing without the written consent is prohibited and any infringement will be subject to legal action.  
© Earl Swenson Associates, Inc. 2020

Seals



**Encompass Health**

NEW REHABILITATION FACILITY FOR  
**Encompass Rehabilitation Hospital of Fitchburg**  
Fitchburg, WI

DOCUMENT CHANGES	Date
REV 4 - 16 BED EXP.	2022-06-21
REV 6	2022-08-03

Issue Description	CONS. DOCUMENTS
Original Issue Date	2022-04-03
Project No.	2024-10
Drawn By	WJK
Checked By	CS
Drawing Title	

EXTERIOR PERSPECTIVES

Sheet Number  
**A2.21**



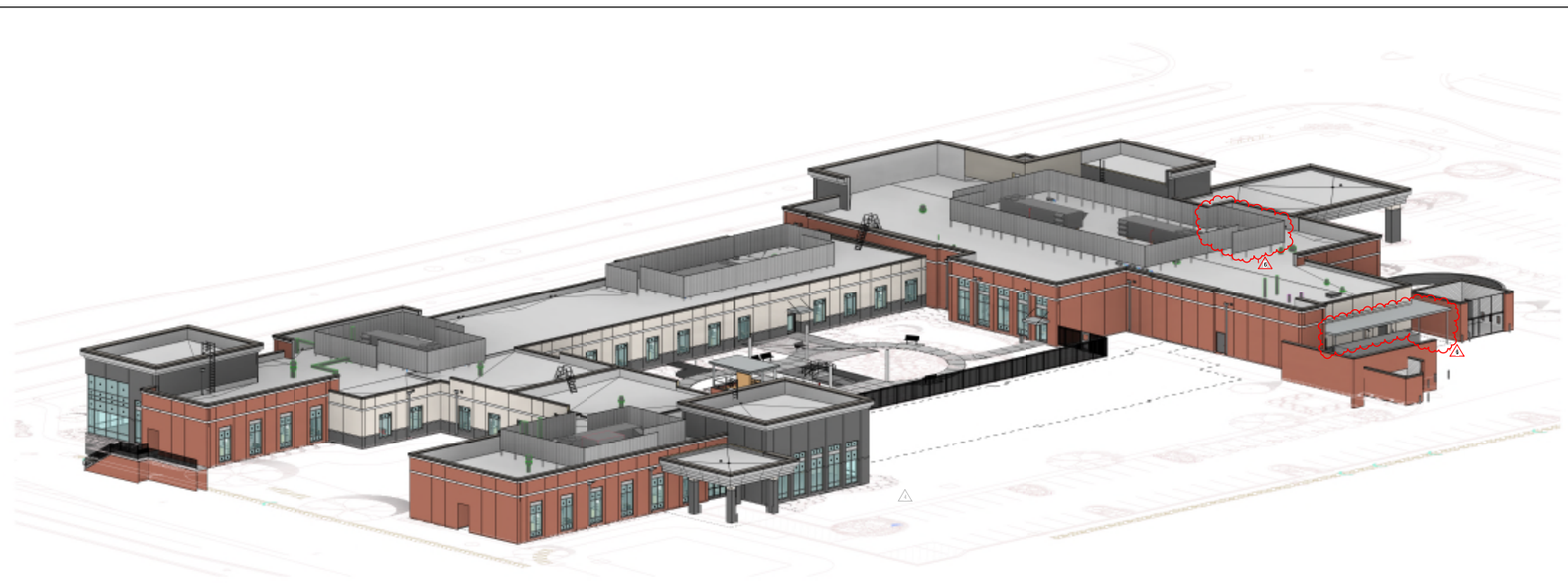
NEW REHABILITATION FACILITY FOR  
**Encompass Rehabilitation Hospital of Fitchburg**  
Fitchburg, WI

Rev	Description	Date
REV 4	16 BED EXP.	2022-06-21
REV 6		2022-06-03

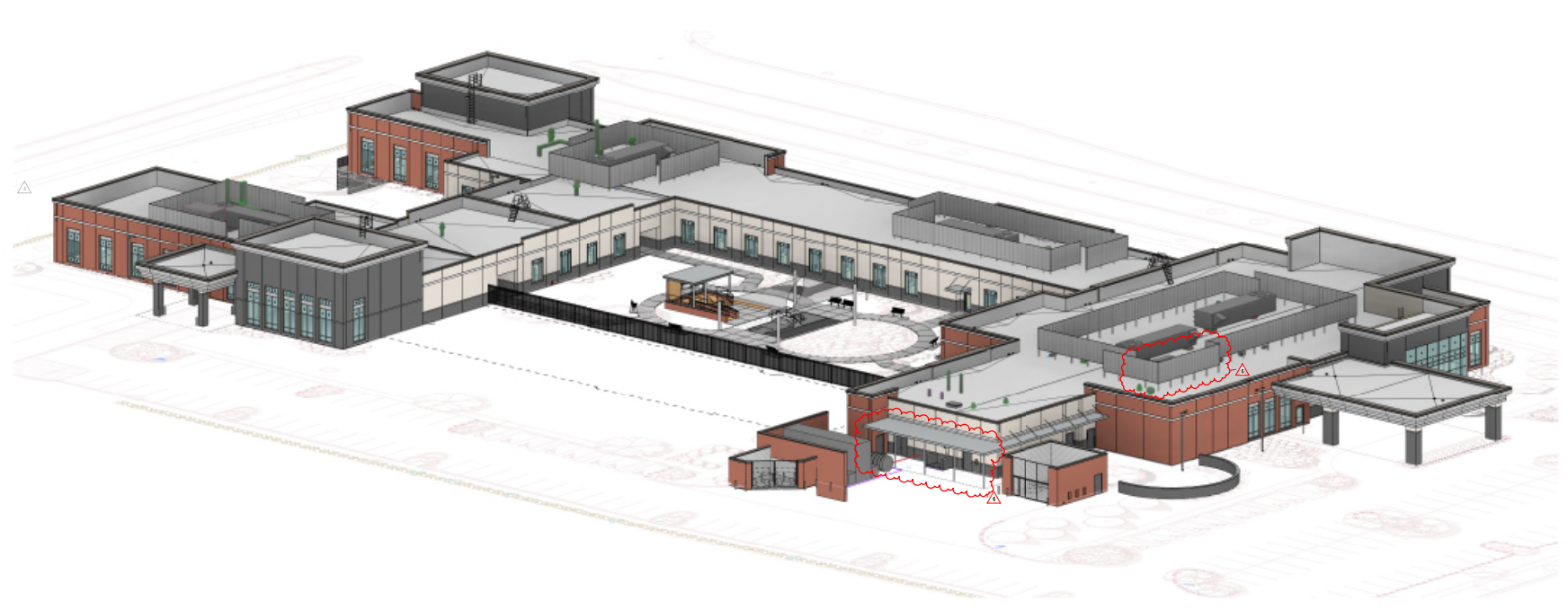
Issue Description: CONS. 03/04/2021  
Original Issue Date: 2021/04/03  
Project No: 2024103  
Drawn By: [initials] Checked By: [initials]  
Drawing Title:

EXTERIOR PERSPECTIVES  
Sheet Number

**A2.22**



**1** SOUTHWEST VIEW  
SCALE:



**2** SOUTHEAST VIEW  
SCALE:

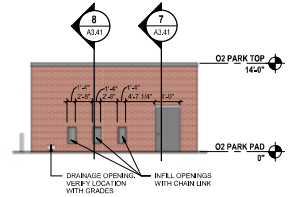
SHEET HAS BEEN OPTIMIZED FOR COLOR PRINTING

GRAPHIC SCALE: 1/32" = 1'-0"  
GRAPHIC SCALE: 1/16" = 1'-0"  
GRAPHIC SCALE: 3/32" = 1'-0"  
GRAPHIC SCALE: 1/8" = 1'-0"  
GRAPHIC SCALE: 3/16" = 1'-0"  
GRAPHIC SCALE: 1/4" = 1'-0"  
GRAPHIC SCALE: 3/8" = 1'-0"  
GRAPHIC SCALE: 1/2" = 1'-0"  
GRAPHIC SCALE: 3/4" = 1'-0"  
GRAPHIC SCALE: 1" = 1'-0"  
IM: 10/22/2022 10:33 - 4:00pm (Print) (Sheet) P2024103\_Ext\_Perspectives\_Rev6.rvt, A2.22.rvt, KVC

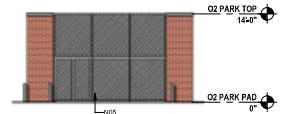
SHEET HAS BEEN OPTIMIZED FOR COLOR PRINTING

SHEET HAS BEEN OPTIMIZED FOR COLOR PRINTING

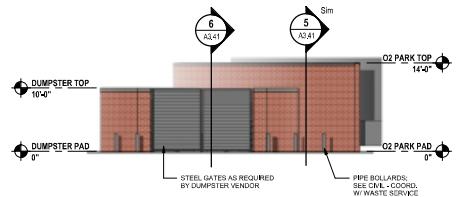
GRAPHIC SCALE: 1/32" = 1'-0"  
 GRAPHIC SCALE: 1/16" = 1'-0"  
 GRAPHIC SCALE: 3/32" = 1'-0"  
 GRAPHIC SCALE: 1/8" = 1'-0"  
 GRAPHIC SCALE: 3/16" = 1'-0"  
 GRAPHIC SCALE: 1/4" = 1'-0"  
 GRAPHIC SCALE: 3/8" = 1'-0"  
 GRAPHIC SCALE: 1/2" = 1'-0"  
 GRAPHIC SCALE: 3/4" = 1'-0"  
 GRAPHIC SCALE: 1" = 1'-0"  
 2/10/2023 10:43 AM IBM Plot/2023/10/23 10:43 am (Sheet) 23024123.dwg Encompass Health Hospital - Gen Yard



**1 O2 YARD - EAST ELEVATION**  
 SCALE: 1/8" = 1'-0"



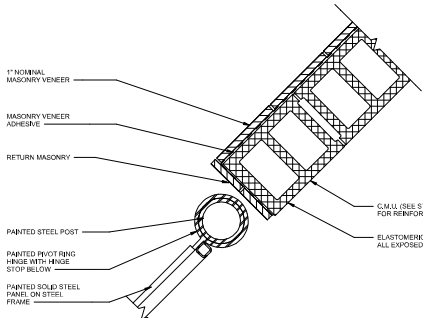
**2 O2 YARD - SOUTH ELEVATION**  
 SCALE: 1/8" = 1'-0"



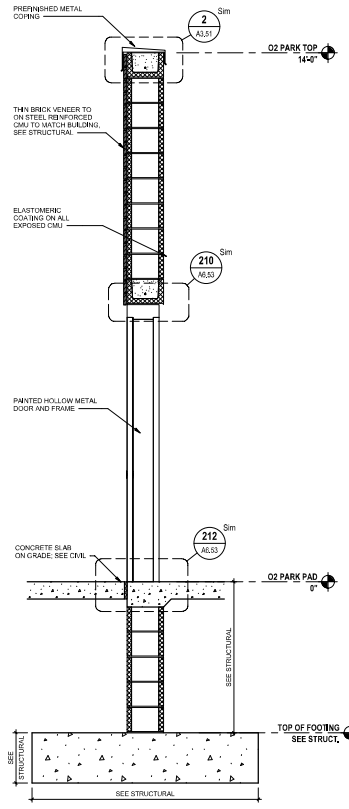
**3 DUMPSTER ENCLOSURE**  
 SCALE: 1/8" = 1'-0"

**EXTERIOR MATERIAL LEGEND**

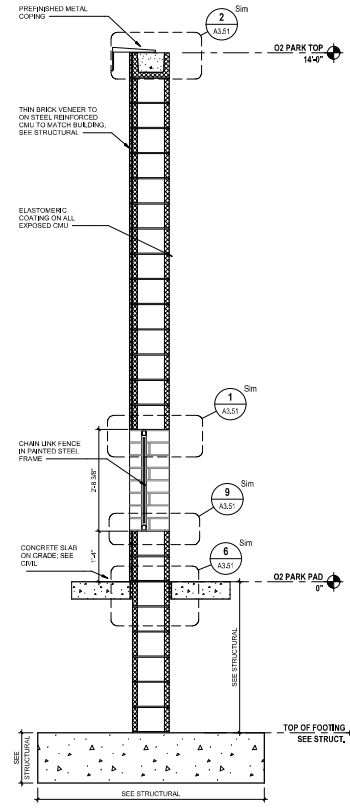
- BRICK VENEER - COLOR 1
- BRICK VENEER - COLOR 2
- BRICK VENEER - COLOR 3
- PRECAST CONCRETE BANDING
- COMPOSITE METAL PANEL - SEE SPECIFICATIONS
- METAL PANEL SCREENWALL - SEE SPECIFICATIONS
- VISION GLASS - SEE SPECIFICATIONS
- SPANDELR GLASS - SEE SPECIFICATIONS



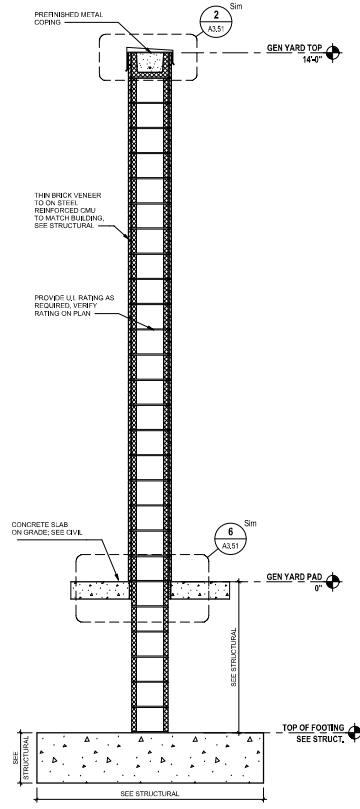
**4 DUMPSTER ENCLOSURE GATE - PLAN VIEW**  
 SCALE: 1/12" = 1'-0"



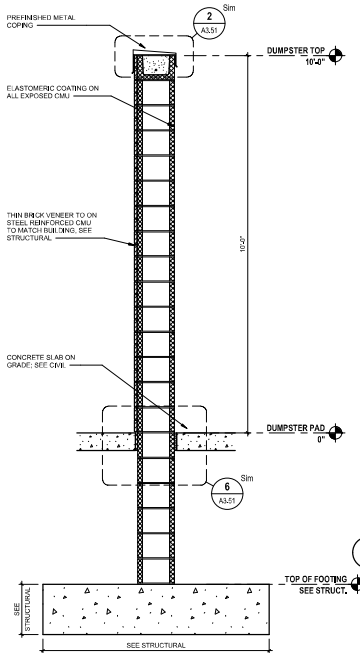
**7 O2 YARD AT DOOR**  
 SCALE: 3/4" = 1'-0"



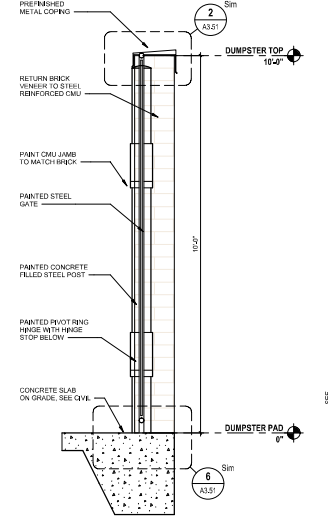
**8 O2 YARD AT VENT**  
 SCALE: 3/4" = 1'-0"



**9 WALL SECTION @ GEN YARD**  
 SCALE: 3/4" = 1'-0"



**5 WALL SECTION @ DUMPSTER WALL**  
 SCALE: 3/4" = 1'-0"



**6 WALL SECTION @ DUMPSTER FENCE GATE**  
 SCALE: 3/4" = 1'-0"

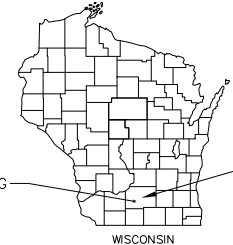


**DOCUMENT CHANGES**

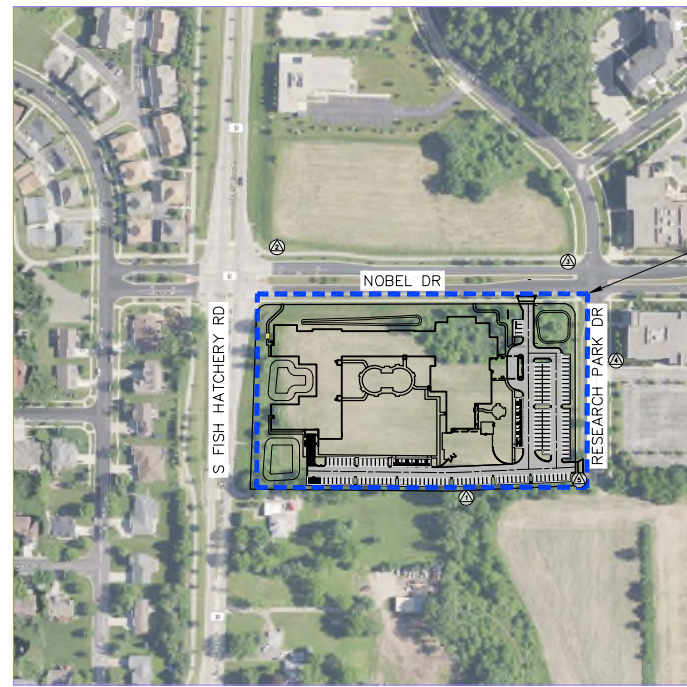
Change No.	Description	Date

# ENCOMPASS HEALTH REHABILITATION HOSPITAL

CITY OF FITCHBURG  
DANE COUNTY, WISCONSIN



CITY OF FITCHBURG  
DANE COUNTY  
WISCONSIN



PROJECT LOCATION

**SITE BENCHMARKS**

- Ⓐ BENCHMARK #1  
ALUMINUM MONUMENT  
ELEVATION=1061.28  
(WEST 1/4 CORNER  
SECTION 15, T6N, R9E)
- Ⓐ BENCHMARK #2  
HYDRANT-TOP NUT  
ELEVATION=1044.88
- Ⓐ BENCHMARK #3  
HYDRANT-TOP NUT  
ELEVATION=1050.69
- Ⓐ BENCHMARK #4  
HYDRANT-TOP NUT  
ELEVATION=1056.34
- Ⓐ BENCHMARK #5  
HYDRANT-TOP NUT  
ELEVATION=1062.37



THE LOCATION OF EXISTING UTILITIES, BOTH UNDERGROUND AND OVERHEAD ARE APPROXIMATE ONLY AND HAVE NOT BEEN INDEPENDENTLY VERIFIED BY THE OWNER OR ITS REPRESENTATIVE. THE CONTRACTOR SHALL BE RESPONSIBLE FOR DETERMINING THE EXACT LOCATION OF ALL EXISTING UTILITIES AND NOTING ANY DISCREPANCIES OR DAMAGE TO UTILITIES BEFORE CONSTRUCTION BEGINS. THE CONTRACTOR SHALL BE FULLY RESPONSIBLE FOR ANY AND ALL DAMAGES WHICH MIGHT BE CAUSED BY THE CONTRACTOR'S FAILURE TO EXACTLY LOCATE AND PRESERVE ANY AND ALL UTILITIES.

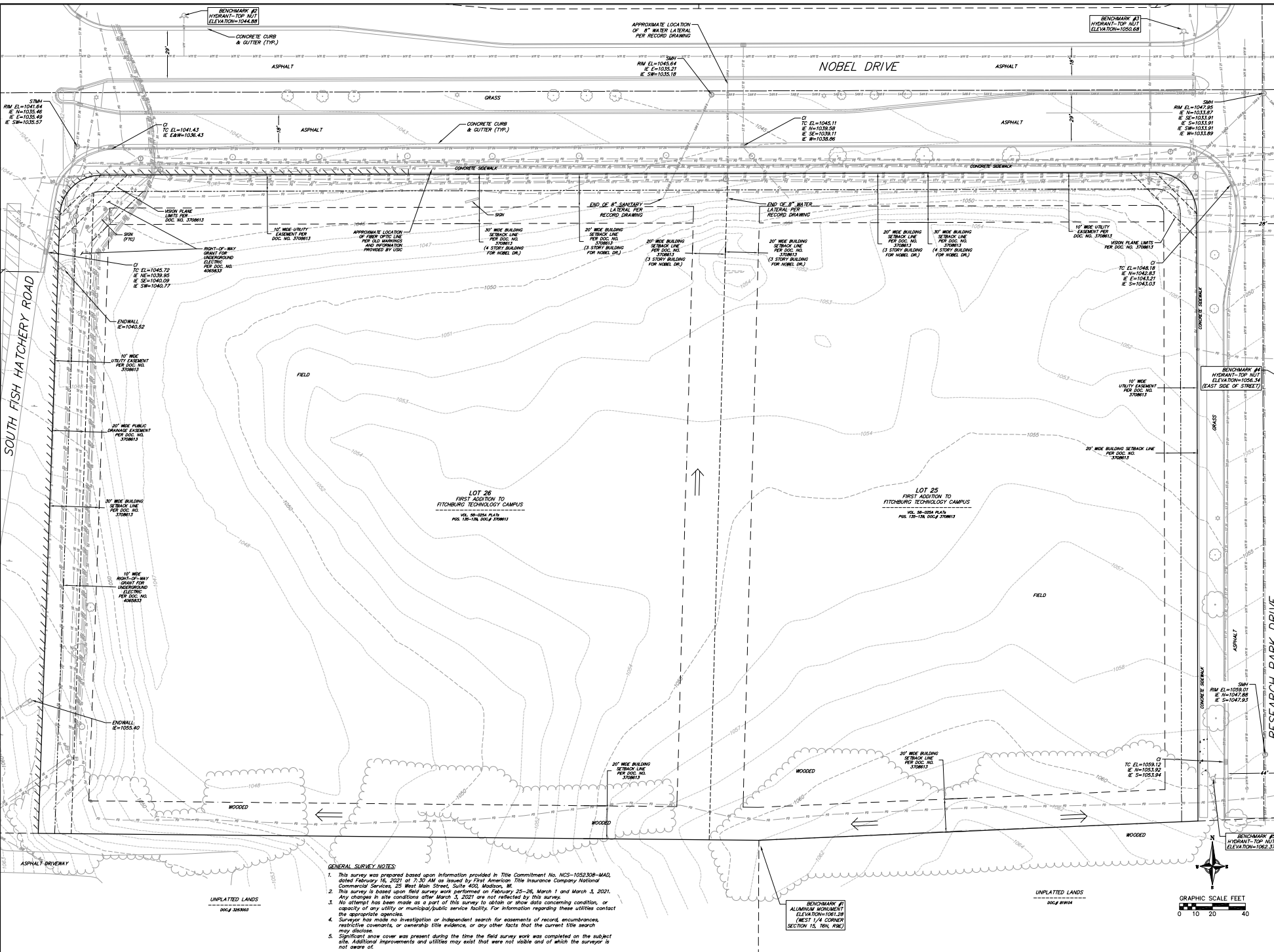
CALL DIGGER'S HOTLINE  
1-800-242-8511

SHEET NO.	DESCRIPTION
C1	TITLE SHEET
C2	GENERAL NOTES & LEGENDS
C3	EXISTING CONDITIONS PLAN
C4	DEMOLITION PLAN
C5	SITE PLAN
C6	GRADING & EROSION CONTROL PLAN
C7	UTILITY PLAN
Ⓐ C8-C11	CONSTRUCTION DETAILS
F1	FIRE ACCESS PLAN
L1-L4	LANDSCAPE PLANS

<b>TITLE SHEET</b>	
ENCOMPASS HEALTH REHABILITATION HOSPITAL	REVISIONS
CITY OF FITCHBURG	NO. DATE
DANE COUNTY, WISCONSIN	NO. DATE
DATE: 1/25/2022	REVISIONS
DRAWN BY: JSH	NO. DATE
CHECKED BY: JSH	NO. DATE
PROJECT NO. 210064	NO. DATE
<b>C1</b>	

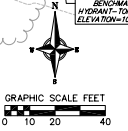


21 Jul 2022 - 05:54 AM Enclosure: H:\E\2022\1054\1054\_1054.dwg Plot: P1



**GENERAL SURVEY NOTES**

1. This survey was prepared based upon information provided in Title Commitment No. NCS-1052308-MAD, dated February 16, 2021 at 7:30 AM as issued by First American Title Insurance Company National Commercial Services, 22 West Main Street, Suite 400, Madison, WI.
2. This survey is based upon field survey work performed on February 25-26, March 1 and March 3, 2021. Any changes in site conditions after March 3, 2021 are not reflected by this survey.
3. No attempt has been made as a part of this survey to obtain or show data concerning condition, or capacity of any utility or municipal/public service facility. For information regarding these utilities contact the appropriate agencies.
4. Surveyor has made no investigation or independent search for easements of record, encumbrances, restrictive covenants, or conveyance title evidence, or any other facts that the current title search may disclose.
5. Significant snow cover was present during the time the field survey work was completed on the subject site. Additional improvements and utilities may exist that were not visible and of which the surveyor is not aware of.

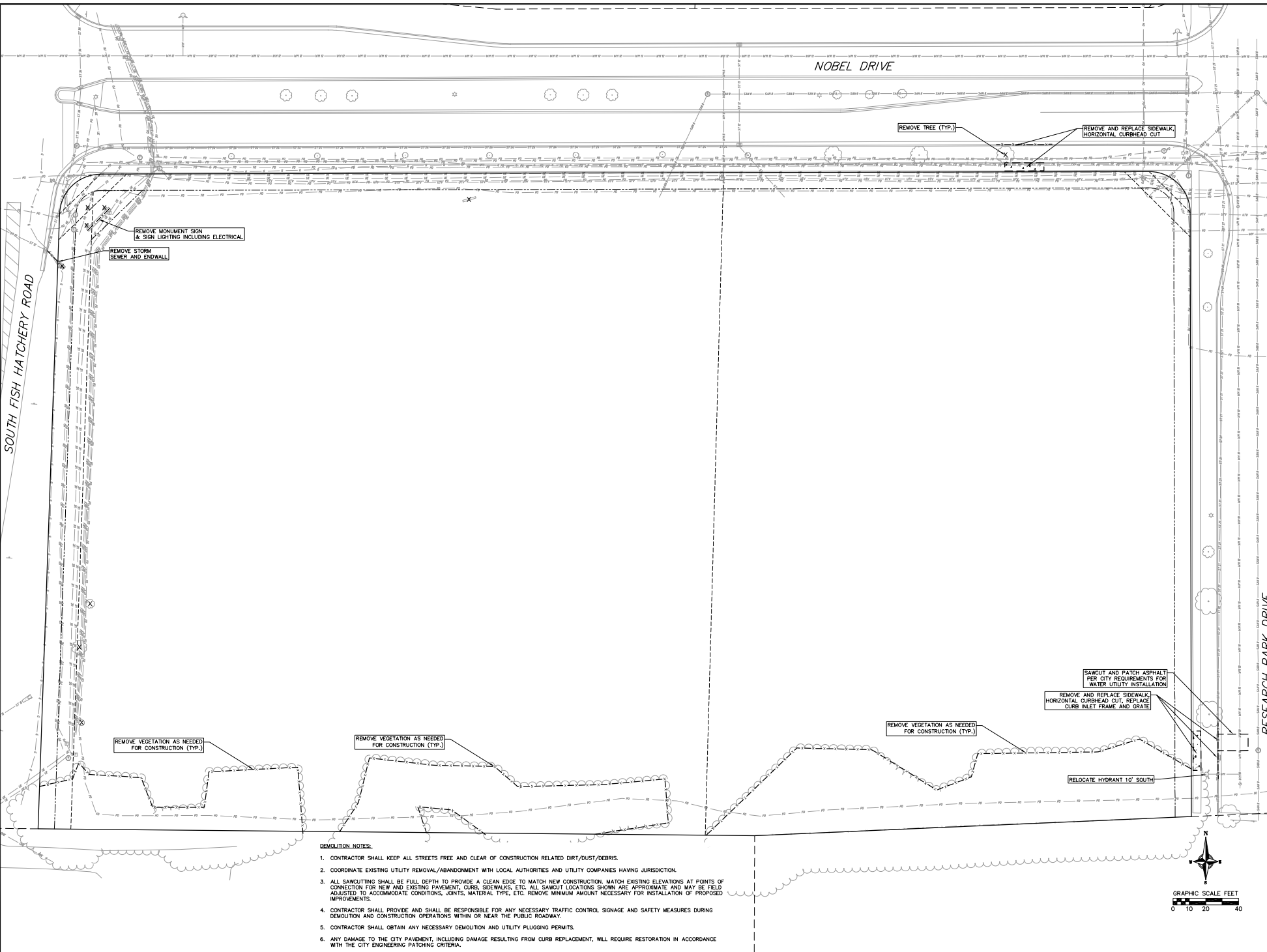


**vierbicher**  
planning | engineering | construction  
Phone: (608) 241-2899

**EXISTING CONDITIONS PLAN**  
ENCOMPASS HEALTH REHABILITATION HOSPITAL  
CITY OF FITCHBURG  
DANE COUNTY, WISCONSIN

NO.	DATE	REVISIONS	NO.	DATE	REVISIONS
1	8/27/22	REV 4 - 18" MED DOP			

DATE: 1/25/2022  
DRAWN: SHM  
CHECKED: SHM  
PROJECT NO.: 210054  
**C3**



- DEMOLITION NOTES:**
1. CONTRACTOR SHALL KEEP ALL STREETS FREE AND CLEAR OF CONSTRUCTION RELATED DIRT/DUST/DEBRIS.
  2. COORDINATE EXISTING UTILITY REMOVAL/ABANDONMENT WITH LOCAL AUTHORITIES AND UTILITY COMPANIES HAVING JURISDICTION.
  3. ALL SAWCUTTING SHALL BE FULL DEPTH TO PROVIDE A CLEAN EDGE TO MATCH NEW CONSTRUCTION. MATCH EXISTING ELEVATIONS AT POINTS OF CONNECTION FOR NEW AND EXISTING PAVEMENT, CURBS, SIDEWALKS, ETC. ALL SAWCUT LOCATIONS SHOWN ARE APPROXIMATE AND MAY BE FIELD ADJUSTED TO ACCOMMODATE CONDITIONS, JOINTS, MATERIAL TYPE, ETC. REMOVE MINIMUM AMOUNT NECESSARY FOR INSTALLATION OF PROPOSED IMPROVEMENTS.
  4. CONTRACTOR SHALL PROVIDE AND SHALL BE RESPONSIBLE FOR ANY NECESSARY TRAFFIC CONTROL SIGNAGE AND SAFETY MEASURES DURING DEMOLITION AND CONSTRUCTION OPERATIONS WITHIN OR NEAR THE PUBLIC ROADWAY.
  5. CONTRACTOR SHALL OBTAIN ANY NECESSARY DEMOLITION AND UTILITY PLUGGING PERMITS.
  6. ANY DAMAGE TO THE CITY PAVEMENT, INCLUDING DAMAGE RESULTING FROM CURB REPLACEMENT, WILL REQUIRE RESTORATION IN ACCORDANCE WITH THE CITY ENGINEERING PATCHING CRITERIA.

**vierendeel**  
 planning | engineering | construction  
 Phone: (608) 241-2899

**RESEARCH PARK DRIVE**  
**DEMOLITION PLAN**  
 ENCOMPASS HEALTH REHABILITATION HOSPITAL  
 CITY OF FITCHBURG  
 DANE COUNTY, WISCONSIN

NO.	DATE	REVISIONS	BY	CHKD
1	8/27/22	REV A - 18' MED SUP		

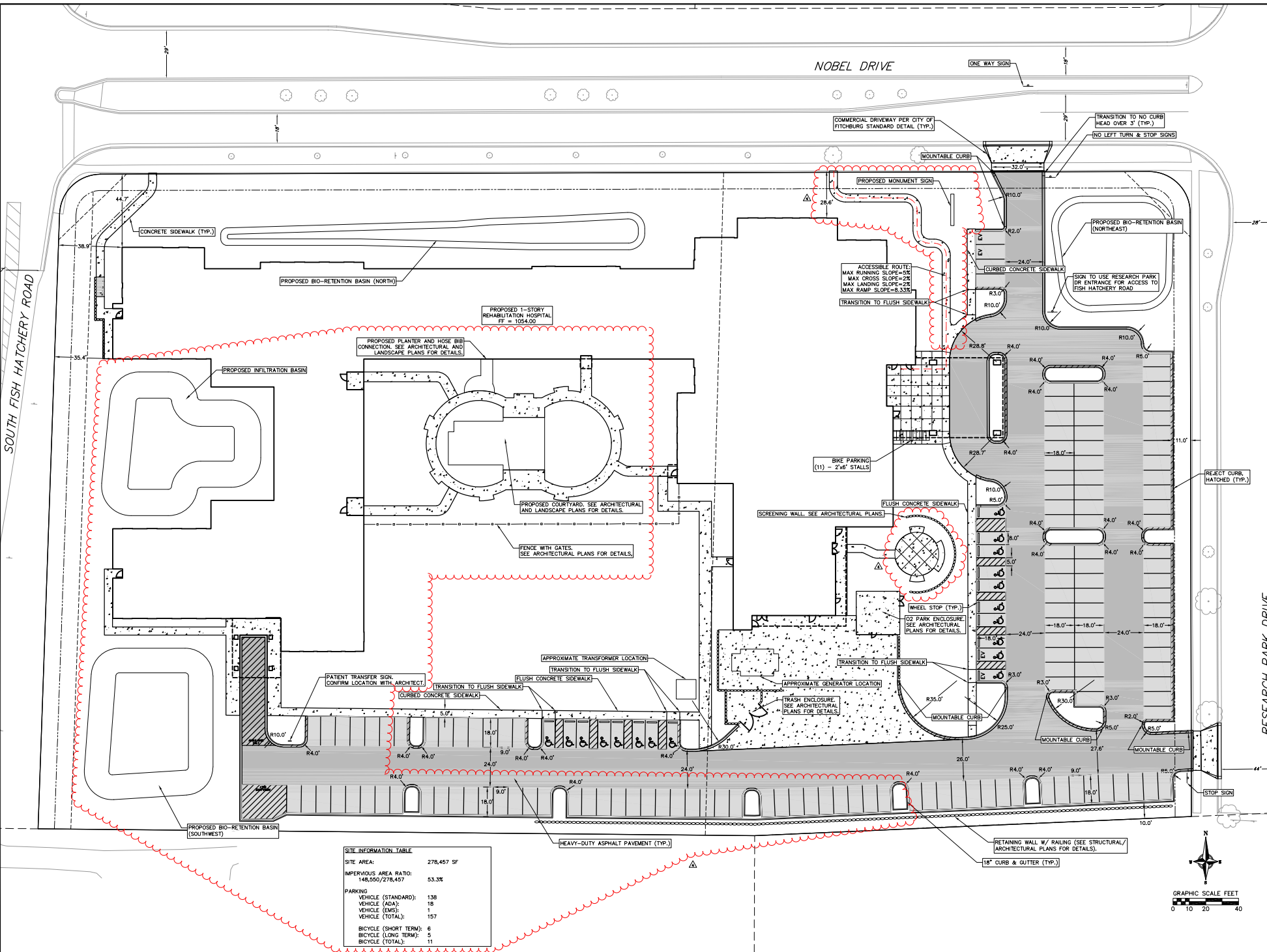
DATE: 1/25/2022

DRAWN: JPM

CHECKED: SHM

PROJECT NO.: 210064

C4

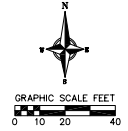


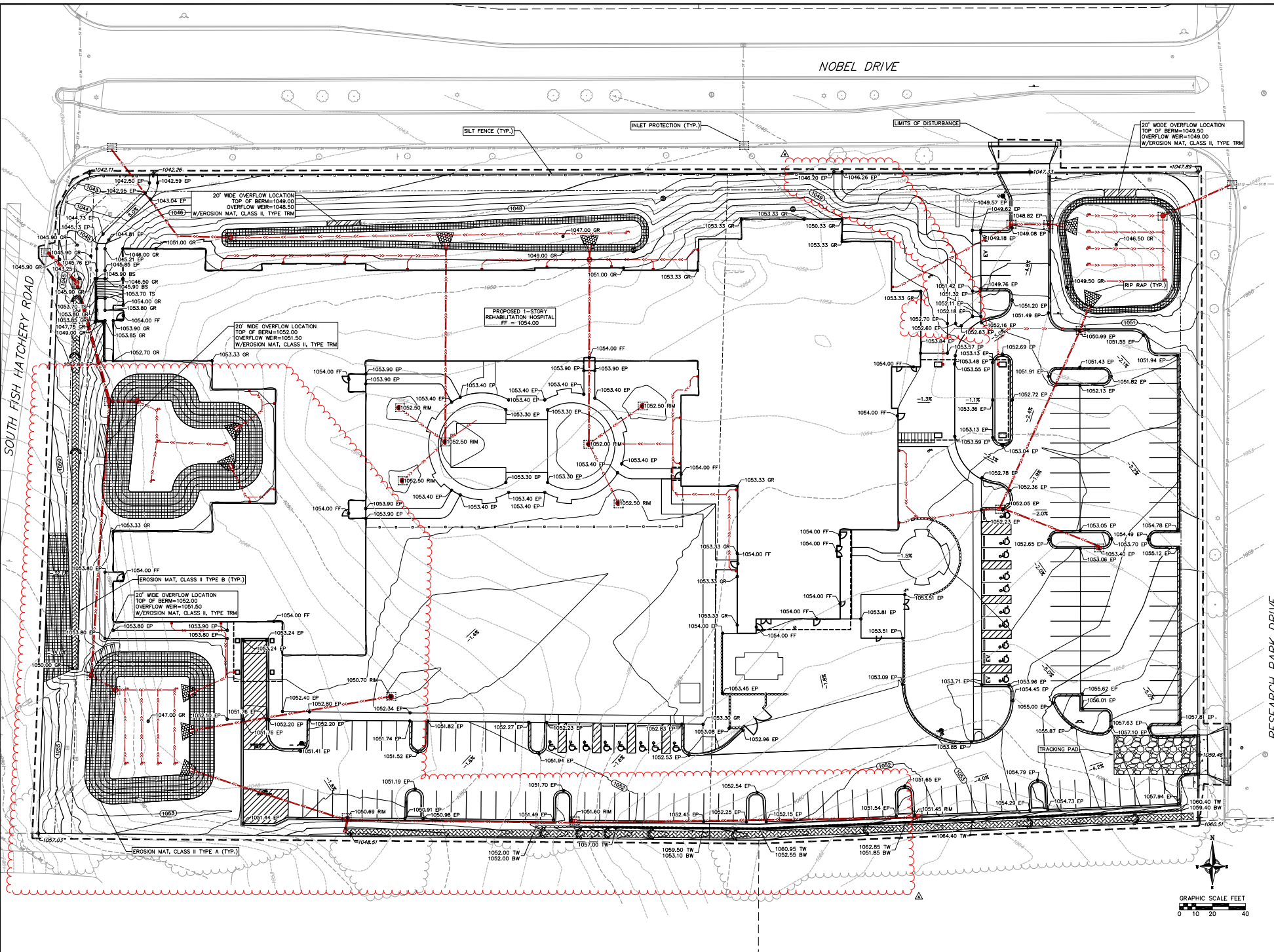
**SITE INFORMATION TABLE**

SITE AREA:	278,457 SF
IMPERVIOUS AREA RATIO:	148,950/278,457
	53.3%
<b>PARKING</b>	
VEHICLE (STANDARD):	138
VEHICLE (ADA):	18
VEHICLE (EMS):	1
VEHICLE (TOTAL):	157
BICYCLE (SHORT TERM):	6
BICYCLE (LONG TERM):	5
BICYCLE (TOTAL):	11

**RESEARCH PARK DRIVE**  
**SITE PLAN**  
 ENCOMPASS HEALTH REHABILITATION HOSPITAL  
 CITY OF FITCHBURG  
 DANE COUNTY, WISCONSIN

DATE:	REVISED:	BY:	DATE:
1/25/2022			
DESIGNER:	NO.:	REVISIONS:	NO. DATE
CHUCKER	000		
PROJECT NO.:	210054		





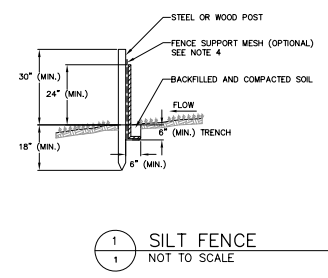
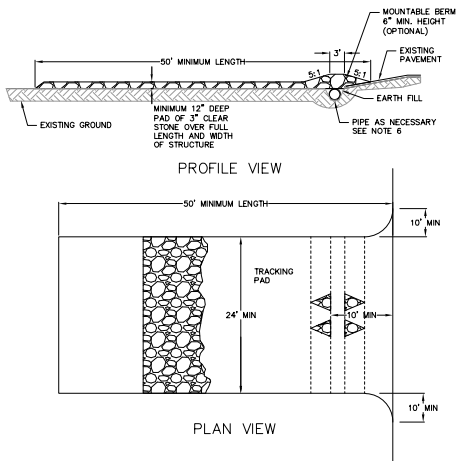
DATE	REVISIONS	NO.	DATE	REVISIONS
1/25/2022	REV 4 - 1" RED	1	8/7/22	

DRAWN: [Blank]  
 CHECKED: [Blank]  
 PROJECT NO.: 21004  
**C6**



EROSION CONTROL MEASURES

- EROSION CONTROL SHALL BE IN ACCORDANCE WITH THE CITY EROSION CONTROL ORDINANCE AND CHAPTER NR 216 OF THE WISCONSIN ADMINISTRATIVE CODE.
- CONSTRUCT AND MAINTAIN ALL EROSION AND SEDIMENT CONTROL MEASURES IN ACCORDANCE WITH WISCONSIN DNR TECHNICAL STANDARDS (https://dnr.wi.gov/runoff/stormwater/techstds.htm) AND WISCONSIN CONSTRUCTION SITE BEST MANAGEMENT PRACTICE HANDBOOK.
- INSTALL SEDIMENT CONTROL PRACTICES (TRACKING PAD, PERIMETER SILT FENCE, SEDIMENT BASINS, ETC.) PRIOR TO INITIATING OTHER LAND DISTURBING CONSTRUCTION ACTIVITIES.
- THE CONTRACTOR IS REQUIRED TO MAKE EROSION CONTROL INSPECTIONS AT THE END OF EACH WEEK AND WHEN 0.5 INCHES OF RAIN FALLS WITHIN 24 HOURS. INSPECTION REPORTS SHALL BE PREPARED AND FILED AS REQUIRED BY THE DNR AND/OR CITY. ALL MAINTENANCE WILL FOLLOW AN INSPECTION WITHIN 24 HOURS.
- EROSION CONTROL IS THE RESPONSIBILITY OF THE CONTRACTOR UNTIL ACCEPTANCE OF THIS PROJECT. EROSION CONTROL MEASURES AS SHOWN SHALL BE THE MINIMUM PRECAUTIONS THAT WILL BE ALLOWED. ADDITIONAL EROSION CONTROL MEASURES, AS REQUESTED IN WRITING BY THE STATE OR LOCAL INSPECTORS, OR THE DEVELOPER'S ENGINEER, SHALL BE INSTALLED WITHIN 24 HOURS.
- A 3" CLEAR STONE TRACKING PAD SHALL BE INSTALLED AT THE END OF ROAD CONSTRUCTION LIMITS TO PREVENT SEDIMENT FROM BEING TRACKED ONTO THE ADJACENT PAVED PUBLIC ROADWAY. SEDIMENT TRACKING PAD SHALL CONFORM TO WISCONSIN TECHNICAL STANDARD 1057. SEDIMENT REACHING THE PUBLIC ROAD SHALL BE REMOVED BY STREET CLEANING (NOT HYDRAULIC FLUSHING) BEFORE THE END OF EACH WORK DAY.
- CHANNELIZED RUNOFF FROM ADJACENT AREAS PASSING THROUGH THE SITE SHALL BE DIVERTED AROUND DISTURBED AREAS.
- STABILIZED DISTURBED GROUND: ANY SOIL OR DIRT PILES WHICH WILL REMAIN IN EXISTENCE FOR MORE THAN 7-CONSECUTIVE DAYS, WHETHER TO BE WORKED DURING THAT PERIOD OR NOT, SHALL NOT BE LOCATED WITHIN 25-FEET OF ANY ROADWAY, PARKING LOT, PAVED AREA, OR DRAINAGE STRUCTURE OR CHANNEL (UNLESS INTENDED TO BE USED AS PART OF THE EROSION CONTROL MEASURES). TEMPORARY STABILIZATION AND CONTROL MEASURES (SEEDING, MULCHING, TARPING, EROSION MATTING, BARRIER FENCING, ETC.) ARE REQUIRED FOR THE PROTECTION OF DISTURBED AREAS AND SOIL PILES, WHICH WILL REMAIN UN-WORKED FOR A PERIOD OF MORE THAN 7-CONSECUTIVE CALENDAR DAYS. THESE MEASURES SHALL REMAIN IN PLACE UNTIL SITE HAS STABILIZED.
- SILT DE-WATERING: WATER PUMPED FROM THE SITE SHALL BE TREATED BY TEMPORARY SEDIMENTATION BASINS OR OTHER APPROPRIATE CONTROL MEASURES. SEDIMENTATION BASINS SHALL HAVE A DEPTH OF AT LEAST 3 FEET, BE SURROUNDED BY SNOWFENCE OR EQUIVALENT BARRIER AND HAVE SUFFICIENT SURFACE AREA TO PROVIDE A SURFACE SETTLING RATE OF NO MORE THAN 750 GALLONS PER SQUARE FOOT PER DAY AT THE HIGHEST DEWATERING FLOWING RATE. WATER MAY NOT BE DISCHARGED IN A MANNER THAT CAUSES EROSION OF THE SITE, A NEIGHBORING SITE, OR THE BED OR BANKS OF THE RECEIVING WATER. POLYMERS MAY BE USED AS DIRECTED BY DNR TECHNICAL STANDARD 1061 (DE-WATERING).
- WASHED STONE WEEPERS OR TEMPORARY EARTH BERMS SHALL BE BUILT PER PLAN BY CONTRACTOR TO TRAP SEDIMENT OR SLOW THE VELOCITY OF STORM WATER.
- SEE DETAIL SHEETS FOR RIP-RAP SIZING. IN NO CASE WILL RIP-RAP BE SMALLER THAN 3" TO 6".
- INLET FILTERS ARE TO BE PLACED IN STORMWATER INLET STRUCTURES AS SOON AS THEY ARE INSTALLED. ALL PROJECT AREA STORM INLETS NEED WISCONSIN D.O.T. TYPE D INLET PROTECTION. THE FILTERS SHALL BE MAINTAINED UNTIL THE CITY HAS ACCEPTED THE BINDER COURSE OF ASPHALT.
- USE DETENTION BASINS AS SEDIMENT BASINS DURING CONSTRUCTION (DO NOT USE INFILTRATION AREAS). AT THE END OF CONSTRUCTION, REMOVE SEDIMENT AND RESTORE PER PLAN.
- RESTORATION (SEED, FERTILIZE AND MULCH) SHALL BE PER SPECIFICATIONS ON THIS SHEET (NOTE: ADD SEEDING RATE STANDARD OF DETAIL BLOCK TO PLAN) UNLESS SPECIAL RESTORATION IS CALLED FOR ON THE LANDSCAPE PLAN OR THE DETENTION BASIN DETAIL SHEET.
- TERRACES SHALL BE RESTORED WITH 6" TOPSOIL, PERMANENT SEED, FERTILIZER AND MULCH. LOTS SHALL BE RESTORED WITH 6" TOPSOIL, TEMPORARY SEED, FERTILIZER AND MULCH.
- AFTER DETENTION BASIN GRADING IS COMPLETE, THE BOTTOM OF DRY BASINS SHALL RECEIVE 6" TOPSOIL AND SHALL BE CHISEL-FLOWED TO A MINIMUM DEPTH OF 12" PRIOR TO RESTORATION.
- SEED, FERTILIZER AND MULCH SHALL BE APPLIED WITHIN 7 DAYS AFTER FINAL GRADE HAS BEEN ESTABLISHED. IF DISTURBED AREAS WILL NOT BE RESTORED IMMEDIATELY AFTER ROUGH GRADING, TEMPORARY SEED SHALL BE PLACED.
- FOR THE FIRST SIX WEEKS AFTER RESTORATION (E.G. SEED & MULCH, EROSION MAT, SOD) OF A DISTURBED AREA, INCLUDE SUMMER WATERING PROVISIONS OF ALL NEWLY SEEDED AND MULCHED AREAS WHENEVER 7 DAYS ELAPSE WITHOUT A RAIN EVENT.
- EROSION MAT (CLASS I, TYPE B URBAN PER WISCONSIN D.O.T. P.A.L.) SHALL BE INSTALLED ON THE BOTTOM (INVERT) OF ROADSIDE DITCHES/SWALES AS SHOWN ON THIS PLAN. 1 ROLL WIDTH.
- SOIL STABILIZERS SHALL BE APPLIED TO DISTURBED AREAS WITH SLOPES BETWEEN 10% AND 3:1 (DO NOT USE IN CHANNELS). SOIL STABILIZERS SHALL BE TYPE B PER WISCONSIN D.O.T. P.A.L. (PRODUCT ACCEPTABILITY LIST), OR EQUAL. APPLY AT RATES AND METHODS SPECIFIED BY MANUFACTURER. SOIL STABILIZERS SHALL BE RE-APPLIED WHENEVER VEHICLES OR OTHER EQUIPMENT TRACK ON THE AREA.
- SILT FENCE OR EROSION MAT SHALL BE INSTALLED ALONG THE CONTOURS AT 100 FOOT INTERVALS DOWN THE SLOPE ON THE DISTURBED SLOPES STEEPER THAN 5% AND MORE THAN 100 FEET LONG THAT SHEET FLOW TO THE ROADWAY UNLESS SOIL STABILIZERS ARE USED.
- INSTALL MINIMUM 6" WIDE EROSION MAT ALONG THE BACK OF CURB AFTER TOPSOIL HAS BEEN PLACED IN THE TERRACE IF THIS AREA WILL NOT BE SEEDED AND MULCHED WITHIN 48 HOURS OF PLACING TOPSOIL.
- SILT FENCE TO BE USED ACROSS AREAS OF THE LOT THAT SLOPE TOWARDS A PUBLIC STREET OR WATERWAY. SEE DETAILS.
- SEDIMENT SHALL BE CLEANED FROM CURB AND GUTTER AFTER EACH RAINFALL AND PRIOR TO PROJECT ACCEPTANCE.
- ACCUMULATED CONSTRUCTION SEDIMENT SHALL BE REMOVED FROM ALL PERMANENT BASINS TO THE ELEVATION SHOWN ON THE GRADING PLAN FOLLOWING THE STABILIZATION OF DRAINAGE AREAS.
- ALL CONSTRUCTION ENTRANCES SHALL HAVE TEMPORARY ROAD CLOSED SIGNS THAT WILL BE IN PLACE WHEN THE ENTRANCE IS NOT IN USE AND AT THE END OF EACH DAY.
- ANY PROPOSED CHANGES TO THE EROSION CONTROL PLAN MUST BE SUBMITTED AND APPROVED BY DANE COUNTY LAND CONSERVATION OR PERMITTING MUNICIPALITY.
- THE CITY, OWNER AND/OR ENGINEER MAY REQUIRE ADDITIONAL EROSION CONTROL MEASURES AT ANY TIME DURING CONSTRUCTION.

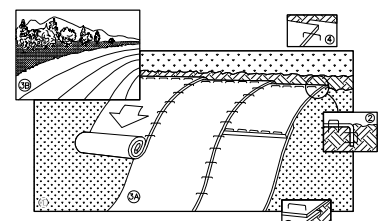


- NOTES:**
- INSTALL SILT FENCE TO FOLLOW THE GROUND CONTOURS AS CLOSELY AS POSSIBLE.
  - CURVE THE SILT FENCE UP THE SLOPE TO PREVENT WATER FROM RUNNING AROUND THE ENDS.
  - POST SPACING WITH FENCE SUPPORT MESH = 10 FT. (MAX.)  
POST SPACING WITHOUT FENCE SUPPORT MESH = 6 FT. (MAX.)
  - SILT FENCE SUPPORT MESH CONSISTS OF 1/4-INCH GAUGE STEEL WIRE WITH A MESH SPACING OF 6 IN. X 6 IN. OR PREFABRICATED POLYMERIC MESH OF EQUIVALENT STRENGTH

1 SILT FENCE  
1 NOT TO SCALE

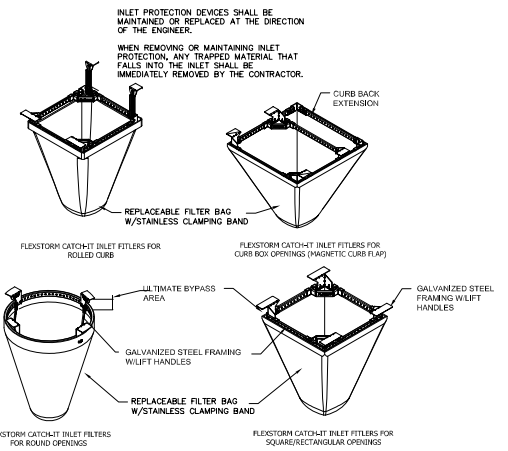
- FOLLOW WISCONSIN DNR TECHNICAL STANDARD 1057 FOR FURTHER DETAILS AND INSTALLATION.
- LENGTH - MINIMUM OF 50'
- WIDTH - 24" MINIMUM, SHOULD BE FLARED AT THE EXISTING ROAD TO PROVIDE A TURNING RADIUS.
- ON SITES WITH A HIGH GROUND WATER TABLE OR WHERE SATURATED CONDITIONS EXIST, GEOTEXTILE FABRIC SHALL BE PLACED OVER EXISTING GROUND PRIOR TO PLACING STONE. FABRIC SHALL BE WSDOT TYPE-HR GEOTEXTILE FABRIC.
- STONE - CRUSHED 3" CLEAR STONE SHALL BE PLACED AT LEAST 12" DEEP OVER THE ENTIRE LENGTH AND WIDTH OF ENTRANCE.
- SURFACE WATER - ALL SURFACE WATER FLOWING TO OR DIVERTED TOWARDS CONSTRUCTION ENTRANCES SHALL BE PIPED THROUGH THE ENTRANCE, MAINTAINING POSITIVE DRAINAGE. PIPES INSTALLED THROUGH THE STABILIZED CONSTRUCTION ENTRANCE SHALL BE PROTECTED WITH A MOUNTABLE BERM WITH 5:1 SLOPES AND MINIMUM OF 6" STONE OVER THE PIPE. PIPE SHALL BE SIZED ACCORDING TO THE DRAINAGE REQUIREMENTS, WHEN THE ENTRANCE IS LOCATED AT A HIGH SPOT AND HAS NO DRAINAGE TO CONVEY A PIPE SHALL NOT BE NECESSARY. THE MINIMUM PIPE DIAMETER SHALL BE 6". CONTRACTOR SHALL BE RESPONSIBLE FOR THE MAINTENANCE OF SAID PIPE.
- LOCATION - A STABILIZED CONSTRUCTION ENTRANCE SHALL BE LOCATED WHERE CONSTRUCTION TRAFFIC ENTERS AND/OR LEAVES THE CONSTRUCTION SITE. VEHICLES LEAVING THE SITE MUST TRAVEL OVER THE ENTIRE LENGTH OF THE TRACKING PAD.

1 TRACKING PAD  
1 NOT TO SCALE



- NOTE:** REFER TO GENERAL STAPLE PATTERN GUIDE FOR CORRECT STAPLE PATTERN RECOMMENDATIONS FOR SLOPE INSTALLATIONS.
- PREPARE SOIL BEFORE INSTALLING BLANKETS, INCLUDING APPLICATION OF FERTILIZER AND SEED.  
**NOTE:** WHEN USING CELL-O-SEED, DO NOT SEED PREPARED AREA. CELL-O-SEED MUST BE INSTALLED WITH PAPER SOG DOWN.
  - BEGON AT THE TOP OF THE SLOPE BY ANCHORING THE BLANKET IN 6" DEEP BY 6" WIDE TRENCH. BACKFILL AND COMPACT THE TRENCH AFTER STAPLING.
  - ROLL THE BLANKETS <math>\leq 10^\circ</math> DOWN, OR <math>\leq 5^\circ</math> HORIZONTALLY ACROSS THE SLOPE.
  - THE EDGES OF PARALLEL BLANKETS MUST BE STAPLED WITH APPROXIMATELY 2" OVERLAP.
  - WHEN BLANKETS MUST BE SPLICED DOWN THE SLOPE, PLACE BLANKETS END OVER END (SHINGLE STILES) WITH APPROXIMATELY 4" OVERLAP. STAPLE THROUGH OVERLAPPED AREA, APPROXIMATELY 12" APART.
  - ALL BLANKETS MUST BE SECURELY FASTENED TO THE SLOPE BY PLACING STAPLES/STAKES IN APPROPRIATE LOCATIONS AS RECOMMENDED BY THE MANUFACTURER.

1 EROSION MAT  
1 NOT TO SCALE



1 FRAMED INLET PROTECTION  
1 NOT TO SCALE

**CONSTRUCTION SEQUENCE:**

- INSTALL EROSION CONTROL MEASURES
- STRIP TOPSOIL
- ROUGH GRADE
- CONSTRUCT UNDERGROUND UTILITIES
- CONSTRUCT BUILDING
- CONSTRUCT SITE PAVEMENT
- RESTORE DISTURBED AREA
- GRADE AND RESTORE BIOPRESENTATION BASIN
- REMOVE EROSION CONTROL MEASURES AFTER DISTURBED AREAS ARE RESTORED

**SEEDING RATES:**

- TEMPORARY:**
- USE ANNUAL OATS AT 3.0 LB./1,000 S.F. FOR SPRING AND SUMMER PLANTINGS.
  - USE WINTER WHEAT OR RYE AT 3.0 LB./1,000 SF FOR FALL PLANTINGS STARTED AFTER SEPTEMBER 15.

**PERMANENT:**

- USE WISCONSIN D.O.T. SEED MIX #40 AT 2 LB./1,000 S.F.

**FERTILIZING RATES:**

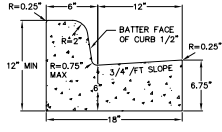
- TEMPORARY AND PERMANENT:**
- USE WISCONSIN D.O.T. TYPE A OR B AT 7 LB./1,000 S.F.

**MULCHING RATES:**

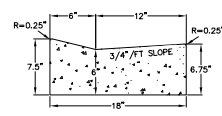
- TEMPORARY AND PERMANENT:**
- USE 3/4" TO 1-1/2" STRAW OR HAY MULCH, CRUMPED PER SECTION 607.2.2.3, OR OTHER RATE AND METHOD PER SECTION 627, WISCONSIN D.O.T. STANDARD SPECIFICATIONS FOR HIGHWAY AND STRUCTURE CONSTRUCTION

NEENAH CASTINGS	INLET TYPE	GRATE SIZE	OPENING SIZE	ADS-PIN
156019621733	ROUND	28	24	62NR6FX
3087 W/VEFLAP	CURB BOX	35.25 x 17.75	33.0 x 15.0	62LCBEXTFX
3087 EXTENDED BACK	CURB BOX	35.25 x 17.75	33.0 x 15.0	62LCBEXTFX
3246A	CURB BOX	35.75 x 23.875	33.5 x 21.0	62LCBFX
3008	SQUARE/RECT	23 x 16	20.5 x 13.5	62ACBFX
3067-C	SQUARE/RECT	35.25 x 17.75	33 x 15	62LSQFX

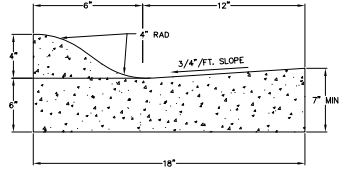
21 Jun 2022 - 8:55a AM Enclosure: H:\M\31054\_Plan\Drawings\1-CADD\1006-1-1\Drawings\DWG 1010.dwg 1010.dwg



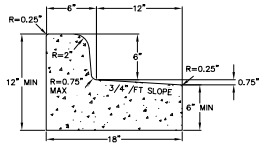
**CURB AND GUTTER CROSS SECTION**



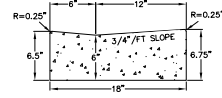
**DRIVEWAY GUTTER CROSS SECTION**



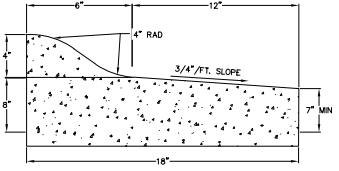
**CURB AND GUTTER CROSS SECTION**



**CURB AND GUTTER REJECT SECTION**



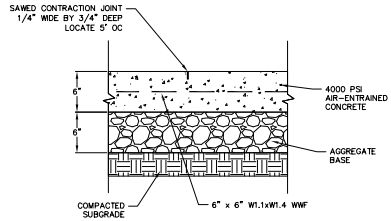
**HANDICAP RAMP GUTTER CROSS SECTION**



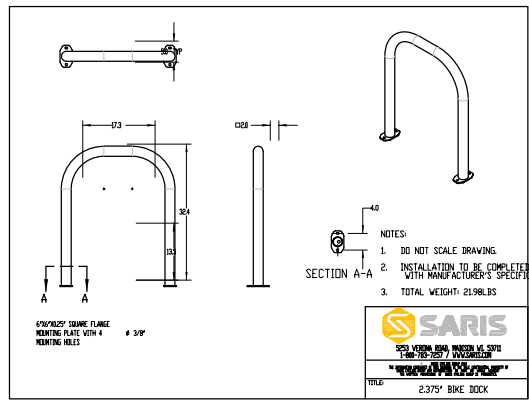
**CURB AND GUTTER REJECT SECTION**

**18" CONCRETE CURB AND GUTTER**  
NOT TO SCALE

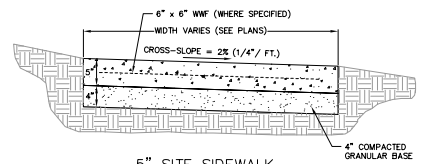
**MOUNTABLE 18" CURB SECTION**  
NOT TO SCALE



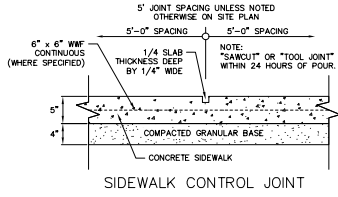
**CONCRETE PAD**  
NOT TO SCALE



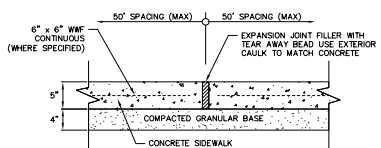
**BIKE RACK DETAIL**  
NOT TO SCALE



**5" SITE SIDEWALK**

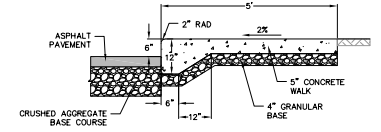


**SIDEWALK CONTROL JOINT**

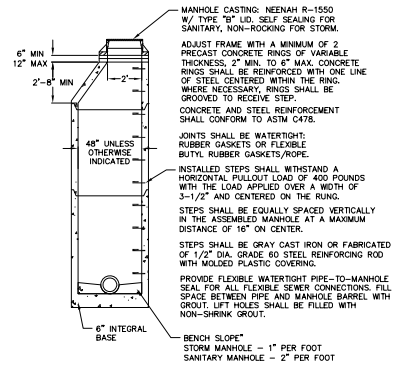


**SIDEWALK EXPANSION JOINT**

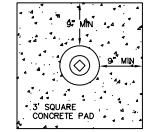
**5" SIDEWALK**  
NOT TO SCALE



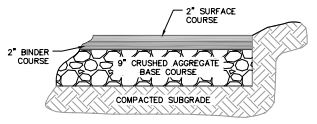
**CURBED SIDEWALK SITE DETAIL**  
NOT TO SCALE



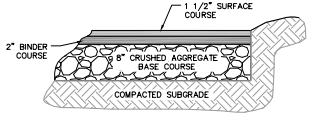
**PRECAST CONCRETE MANHOLE**  
NOT TO SCALE



**PLAN**

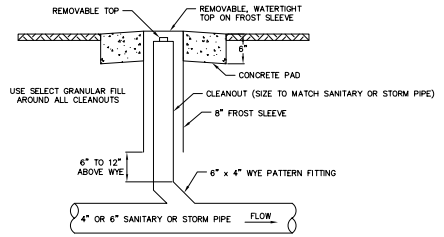


**HEAVY-DUTY ASPHALT PAVEMENT**



**LIGHT-DUTY ASPHALT PAVEMENT**

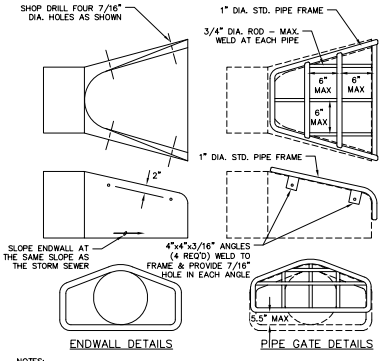
**SITE PAVEMENT**  
NOT TO SCALE



**SECTION**  
NOTE: CONCRETE PAD REQUIRED IN PAVED AREAS ONLY

**CLEANOUT**  
NOT TO SCALE

REV.	NO.	DATE	REVISIONS
1	1	1/25/2022	ISSUED FOR PERMIT

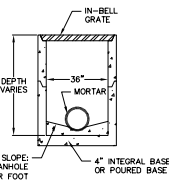


- NOTES:**
- THE CONTRACTOR SHALL BOLT THE PIPE GATE TO THE CONCRETE ENDWALL WITH 3/8"x6" MACHINE BOLTS WITH NUTS ON INSIDE WALL.
  - MANUFACTURER RECOMMENDED FRAME/ROD DIAMETER, BOLTS, AND ATTACHMENT MECHANISM MAY BE USED IF APPROVED BY ENGINEER.
  - GATES SHALL MEET SP5382.36(9)(8)30 AS NOT TO PERMIT PASSAGE OF A 6" SPHERE.

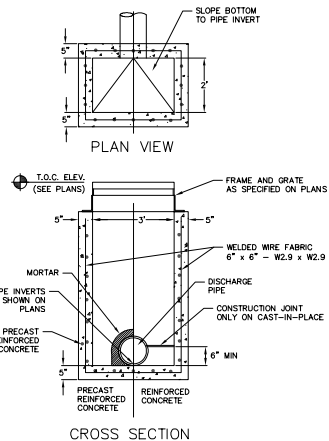
**PAINTING SPECIFICATIONS:**  
 THE PIPE GATE SHALL RECEIVE THE FOLLOWING PREPARATION & PAINTING. THE FIRST COAT SHALL BE RUST-OLEUM X-60 RED BASE METAL PRIMER OR APPROVED EQUAL. THE SECOND COAT SHALL BE RUST-OLEUM 960 ZINC CHROMATE PRIMER OR APPROVED EQUAL. THE THIRD COAT SHALL BE RUST-OLEUM 1282 HIGH GLOSS METAL FINISH OR APPROVED EQUAL.

- PREPARATION STEPS:**
- BARE METAL SURFACES - TREAT WITH THE THREE-COAT PAINTING SYSTEM LISTED AFTER A THOROUGH SCRAPING, WIRE BRUSHING & CLEANING.
  - EACH COAT OF PAINT SHALL BE APPLIED OVER THE ENTIRE GATE SURFACE.
  - ALLOW 24-48 HOURS DRYING TIME AT 60° OR ABOVE BETWEEN COATS.

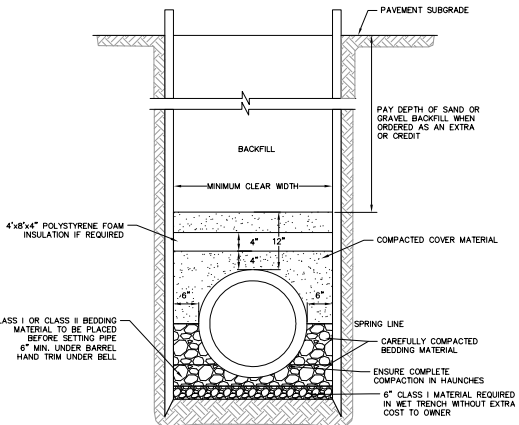
**1 STANDARD ENDWALL**  
 1 NOT TO SCALE



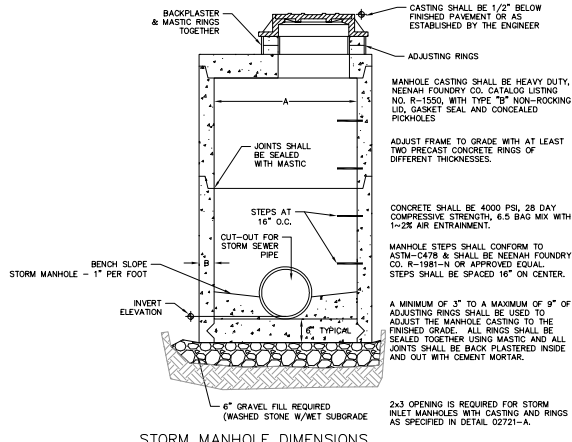
**1 36\"/>
 1 NOT TO SCALE**



**1 CURB INLET - TYPE 3, 2' x 3' BASIN**  
 1 NOT TO SCALE



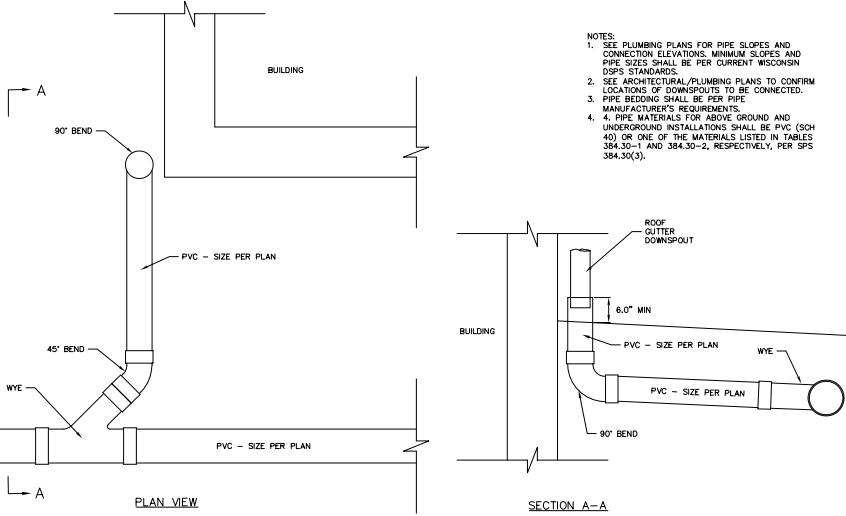
**1 CLASS B RIGID PIPE TRENCH SECTION**  
 1 NOT TO SCALE



**STORM MANHOLE DIMENSIONS**

MANHOLE SIZE	DIMENSION	
	A (MIN.)	B (MIN.)
48"	48"	6"
60"	60"	6"
72"	72"	7"
84"	84"	9"
96"	96"	9"

**1 STORM SEWER MANHOLE**  
 1 NOT TO SCALE



**1 ROOF DRAIN HEADER**  
 1 NOT TO SCALE

- BIORETENTION AREA SPECIFICATIONS:**
- BIORETENTION AREA MUST CONFORM TO WISCONSIN DNR TECHNICAL STANDARD 1004 (BIORETENTION FOR INFILTRATION).
  - HEAVY EQUIPMENT SHALL NOT BE ALLOWED ON AREA OF INFILTRATION DURING CONSTRUCTION OPERATIONS. INFILTRATION AREA MUST NOT BE CONSTRUCTED (INSTALLED) UNTIL THE SITE IS STABILIZED, I.E. THE GRASS COVER IS WELL ESTABLISHED; OTHERWISE, CONSTRUCTION SITE RUNOFF FROM DISTURBED AREAS SHALL BE DIVERTED AWAY FROM BIORETENTION DEVICE. DO NOT ALLOW SURROUNDING SOILS TO ERODE INTO BASINS (ONCE ENGINEERED SOIL AND PLANTINGS HAVE BEEN INSTALLED).
  - USE RAINWATER GARDEN LINE NATIVE PLANT PLUGS FROM AEROCOL, (SUNNY, SHORT, OR MEDIUM STATURE), OR OTHER QUALITY, DEEP-ROOTED PLANTS FROM A LICENSED LOCAL NURSERY, AS APPROVED BY ENGINEER OR OWNER.
  - CONTRACTOR IS RESPONSIBLE FOR PREPARING VEGETATION PLAN, ENSURING PLANT ESTABLISHMENT, INITIAL MAINTENANCE (SEE BELOW), AS WELL AS MAINTAINING PROPER INFILTRATION RATES OVER INFILTRATIVE SURFACE (I.E. NO PONDED WATER 24 HOURS AFTER RAIN EVENT) THROUGHOUT WARRANTY PERIOD AND ONE COMPLETE GROWING SEASON, OR UNTIL ACCEPTANCE BY THE OWNER (WHICHEVER IS SOONER).

- RESTORATION AND INITIAL MAINTENANCE NOTES (DURING FIRST GROWING SEASON):**
- PLANTING IS RECOMMENDED TO TAKE PLACE BETWEEN AVAILABILITY OF PLANTS IN SPRING AND JUNE 30TH, OR BETWEEN SEPTEMBER 1ST AND OCTOBER 15TH. IF PLANTED JULY 1ST THROUGH AUGUST 31ST, HEAVILY WATER THE PLANTS AT THE TIME THEY ARE PLANTED, AND EVERY OTHER DAY FOR A TOTAL OF 4 WATERINGS. A RAIN EVENT GREATER THAN 0.5 INCHES CONSTITUTES A WATERING. IF PLANTED SEPTEMBER 1ST THROUGH OCTOBER 15TH, PLACE CERTIFIED WELD-FREE STRAW MULCH AT 3" MINIMUM THICKNESS BETWEEN PLANTS TO HELP PREVENT PROST HEAVE. IF PLANTING IS TO OCCUR AFTER OCTOBER 15TH, IT SHOULD BE POSTPONED UNTIL THE FOLLOWING SPRING (MAY).
  - EROSION MAT CLASS II SHALL CONFORM TO THE CRITERIA LOCATED IN DNR TECHNICAL STANDARD 1052 (NON-CHANNEL EROSION MAT). DO NOT USE WOOD CHIPS, UNLESS EROSION MAT IS PLACED OVER TOP TO PREVENT FLOATING.
  - DO NOT FERTILIZE NATIVE PLANTINGS, UNLESS DIRECTED BY NURSERY.
  - WATER PLANTS AS NECESSARY, DEPENDING ON WEATHER. TREAT DISEASED OR DISTRESSED PLANTS, SPOT TREAT THE AREA WITH HERBICIDE TO REMOVE WEEDS, REMOVE DEBRIS AND LITTER, AND INSPECT AND REPAIR ERODED AREAS, AS NEEDED.

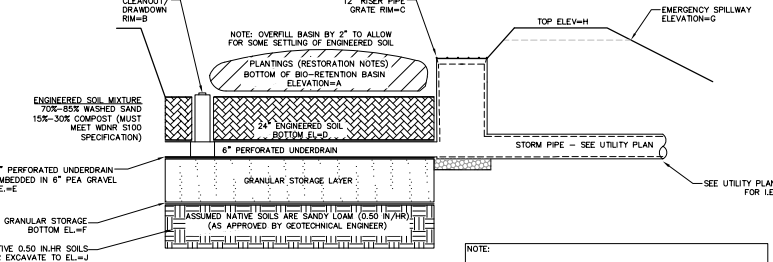
- CONSTRUCTION NOTES (NOT INCLUDING SLOPES):**
- LIMIT CONSTRUCTION TRAFFIC IN EXCAVATION AND USE ONLY TRACKED VEHICLES.
  - EXCAVATE TO FINAL DEPTH DURING DRY WEATHER AND HAVE ALL MATERIALS ON SITE TO COMPLETE CONSTRUCTION PRIOR TO FORECASTED RAIN.
  - OVER-EXCAVATE THE AREA TO INFILTRATIVE LAYER REQUIRED PER DETAIL. NATIVE LAYER OF DEVICE TO BE VISUALLY INSPECTED BY DESIGN ENGINEER IN THE FIELD AFTER THE AREA IS EXCAVATED.
  - CHISEL, PLOW, OR ROTO-TILL THE BASE OF THE AREA TO BREAK UP ANY HARDPAN IN THE NATIVE SOIL LAYER.
  - PLACE GRANULAR FILL, DEPTH AS REQUIRED BY DETAIL, AND UNDERDRAIN COMPONENTS.
  - PLACE ENGINEERED SOIL IN MAXIMUM 12" LIFTS (OVERFILL BY 2" TO ALLOW FOR SETTLING), COMPRISED OF:  
 70-80% WASHED SAND  
 15-30% COMPOST (PER DNR TECHNICAL STANDARD S100)
  - PLANT PLUGS, EROSION MAT, WATER, AND MAINTAIN AS DIRECTED ABOVE. LEAVE UNDERDRAIN DRAWDOWN OPEN UNTIL PLANT ESTABLISHMENT.

- LONG-TERM MAINTENANCE OF BIORETENTION AREA:**
- REFER TO DNR TECHNICAL STANDARD 1004

**BIO-RETENTION BASIN ELEVATIONS**

	A	B	C	D	E	F	G	H	J
NORTHEAST BIO	1046.50	1046.50	1047.50	1044.50	1044.50	1043.50	1049.00	1049.50	1047.50*
SOUTHWEST BIO	1047.00	1047.00	1048.00	1046.00	1046.00	1045.00	1051.50	1052.00	1043.50*
NORTH BIO	1047.00	1047.00	1048.00	1046.00	1046.00	1044.00	1048.50	1048.50	1042.00*

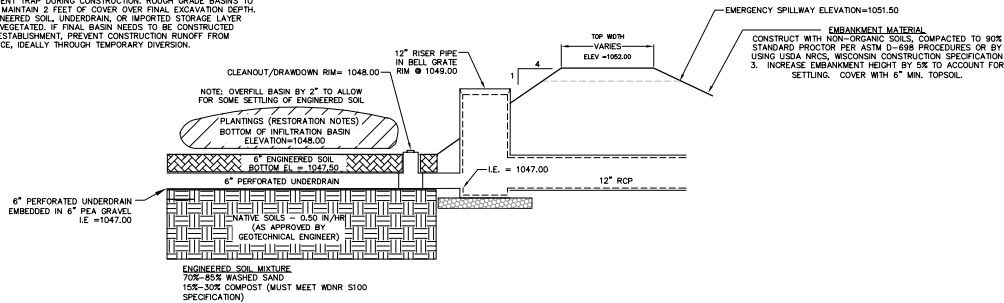
\*OVER EXCAVATE TO ELEVATION 1042.00. EXCAVATING AND TURNING OVER/RE-TILING THE LOWER DRADOWN SHOULD BE COLLECTED SOONER CONTRIBUTION TO INSURE THAT THE TEXTURE OF THE BLENDED SOIL IS CONSISTENT WITH THE DESIGN INFILTRATION RATE OF 0.50 IN/HR.



- NOTE:**  
 TEST PITS SHALL BE COMPLETED BY A GEOTECHNICAL ENGINEER TO VERIFY NATIVE SOILS. IT IS ASSUMED THAT THE INFILTRATION RATE IS 0.5 INCHES/HOUR.
- SAND SHALL MEET ONE OF THE FOLLOWING GRADATION REQUIREMENTS:**
- USDA COARSE SAND (0.075 - 2.00 INCHES)
  - ASTM C33 (FINE AGGREGATE CONCRETE SAND)
  - WISCONSIN STANDARDS AND SPECIFICATIONS FOR HIGHWAY AND STRUCTURE CONSTRUCTION, SECTION 501.2.5.3.4 (FINE AGGREGATE CONCRETE SAND) 2005 EQUIVALENT AS APPROVED BY THE ADMINISTERING AUTHORITY.
- GRAVEL SHALL MEET:**
- COARSE AGGREGATE #2 AND OTHER SPECIFICATIONS OF WISCONSIN STANDARDS AND SPECIFICATIONS FOR HIGHWAY AND STRUCTURE CONSTRUCTION, SECTION 501.2.5. 203 EDITION OR AN EQUIVALENT AS APPROVED BY THE ADMINISTERING AUTHORITY. GRAVEL SHALL BE DOUBLE-WASHED.

**1 BIO-RETENTION BASIN**  
 1 NOT TO SCALE

**TEMPORARY SEDIMENT TRAP CONSTRUCTION:**  
 BIO-RETENTION BASIN AND INFILTRATION BASIN TO BE USED AS TEMPORARY SEDIMENT TRAP DURING CONSTRUCTION. ROUGH GRADE BASINS TO FINISHED GRADE AND MAINTAIN 2 FEET OF COVER OVER FINAL EXCAVATION DEPTH. DO NOT INSTALL ENGINEERED SOIL, UNDERDRAIN, OR IMPORTED STORAGE LAYER UNTIL AFTER SITE IS VEGETATED. IF FINAL BASIN NEEDS TO BE CONSTRUCTED BEFORE VEGETATION ESTABLISHMENT, PREVENT CONSTRUCTION RUNOFF FROM ENTERING THE PRACTICE, IDEALLY THROUGH TEMPORARY DIVERSION.



1  
1  
**INFILTRATION BASIN CROSS-SECTION**  
 NOT TO SCALE

**INFILTRATION AREA SPECIFICATIONS:**

- INFILTRATION AREA MUST CONFORM TO WISCONSIN DNR TECHNICAL STANDARD 1003 (INFILTRATION BASIN).
- HEAVY EQUIPMENT SHALL NOT BE ALLOWED ON AREA OF INFILTRATION DURING CONSTRUCTION OPERATIONS. INFILTRATION AREA MUST NOT BE CONSTRUCTED (INSTALLED) UNTIL THE SITE IS STABILIZED, I.E. THE GRASS COVER IS WELL ESTABLISHED; OTHERWISE, CONSTRUCTION SITE RUNOFF FROM DISTURBED AREAS SHALL BE DIVERTED AWAY FROM INFILTRATION DEVICE. DO NOT ALLOW SURROUNDING SOILS TO ERODE INTO BASINS ONCE ENGINEERED SOIL AND PLANTINGS HAVE BEEN INSTALLED.
- NATIVE SEEDING -NATIVE VEGETATION SHALL BE ESTABLISHED IN CONFORMANCE WITH RECOMMENDATIONS FROM A QUALIFIED NATIVE NURSERY IN THE AREA. IF TREES ARE TO BE USED, SPECIES SHALL BE SELECTED THAT WILL NOT INTERFERE WITH THE FUNCTION OF THE BASIN, OR CAUSE MAINTENANCE PROBLEMS.
- CONTRACTOR IS RESPONSIBLE FOR PREPARING VEGETATION PLAN, ENSURING PLANT ESTABLISHMENT, INITIAL MAINTENANCE (SEE BELOW), AS WELL AS MAINTAINING PROPER INFILTRATION RATES OVER INFILTRATIVE SURFACE (I.E. NO PONDED WATER 24 HOURS AFTER RAIN EVENT) THROUGHOUT WARRANTY PERIOD AND ONE COMPLETE GROWING SEASON, OR UNTIL ACCEPTANCE BY THE OWNER (WHICHEVER IS SOONER).

**RESTORATION AND INITIAL MAINTENANCE NOTES (DURING FIRST GROWING SEASON):**

- NATIVE (PRAIRIE) SEEDING SHALL BE COMPLETED IN THE FALL (AS DORMANT SEEDING PRIOR TO FIRST SNOWFALL) OR IN THE SPRING (BETWEEN MAY 1 AND JUNE 20), OR PLUGS SHALL BE USED.
- FERTILIZER -SOIL TESTING SHALL BE USED TO DETERMINE PROPER APPLICATIONS FOR NUTRIENTS AND LIMING. FERTILIZER APPLICATION SHALL CONFORM TO THE CRITERIA LOCATED IN NRCS CONSERVATION PRACTICE STANDARD, CRITICAL AREA PLANTING (342) OR WDNR TECHNICAL STANDARD SEEDING FOR CONSTRUCTION SITE EROSION CONTROL (1058).
- MULCH OR EROSION MAT -MULCH SHALL CONFORM TO THE CRITERIA LOCATED IN WDNR TECHNICAL STANDARD MULCHING FOR CONSTRUCTION SITES (1058). EROSION MAT SHALL BE CLASS II AND PLACED ON THE SURFACE OF THE INFILTRATION AREA.
- WATER AS NECESSARY, DEPENDING ON WEATHER, RE-MULCH VOID AREAS, TREAT DISEASED OR DISTRESSED PLANTS, SPOT TREAT THE AREA WITH HERBICIDE TO REMOVE WEEDS, REMOVE DEBRIS AND LITTER, AND INSPECT AND REPAIR ERODED AREAS, AS NEEDED.

**CONSTRUCTION NOTES (NOT INCLUDING SLOPES):**

- LIMIT CONSTRUCTION TRAFFIC BY EXCAVATION AND USE ONLY TRACKED VEHICLES.
- EXCAVATE TO FINAL DEPTH DURING DRY WEATHER AND HAVE ALL MATERIALS ON SITE TO COMPLETE CONSTRUCTION PRIOR TO FORECASTED RAIN.
- OVER-EXCAVATE THE AREA TO INFILTRATIVE LAYER REQUIRED PER DETAIL. NATIVE LAYER OF DEVICE TO BE VISUALLY INSPECTED BY DESIGN ENGINEER IN THE FIELD AFTER THE AREA IS EXCAVATED.
- CHESSEL FLOW, OR ROTO-TILL THE BASE OF THE AREA TO BREAK UP ANY HARDPAN IN THE NATIVE SOIL LAYER.
- PLACE GRANULAR FILL DEPTH AS REQUIRED BY DETAIL, AND UNDERDRAIN COMPONENTS.
- PLACE ENGINEERED SOIL IN MAXIMUM 12" LIFTS (OVERFILL BY 2" TO ALLOW FOR SETTLING), COMPRISED OF:  
 70-85% WASHED SAND  
 15-30% COMPOST (PER DNR TECHNICAL STANDARD 5100)
- SEED, MULCH/EROSION MAT, WATER, AND MAINTAIN AS DIRECTED ABOVE. LEAVE UNDERDRAIN DRAINOWN OPEN UNTIL PLANT ESTABLISHMENT.

**LONG-TERM MAINTENANCE OF INFILTRATION AREA:**

- REFER TO DNR TECHNICAL STANDARD 1003

EMERGENCY SPILLWAY ELEVATION=1051.50  
 EMBANKMENT MATERIAL  
 CONSTRUCT WITH NON-ORGANIC SOILS, COMPACTED TO 90% STANDARD PROCTOR PER ASTM D-155 PROCEDURES OR BY USING USDA NRCS, WISCONSIN CONSTRUCTION SPECIFICATION 3. INCREASE EMBANKMENT HEIGHT BY 5% TO ACCOUNT FOR SETTLING. COVER WITH 6" MIN. TOPSOIL.

REVISIONS	NO.	DATE	REVISIONS	NO.	DATE	REVISIONS
Δ	1	6/27/22	REV 4 - 18' BED DEP.			
		1/25/2022				

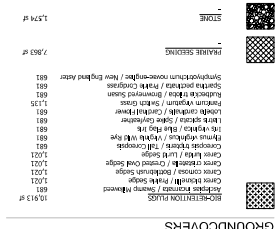
DATE: 1/25/2022  
 DRAWER: JSC  
 CHECKED: SKM  
 PROJECT NO.: 210054



**LANDSCAPE PLAN - OVERALL**  
 INCOMPASS HEALTH REHABILITATION HOSPITAL  
 CITY OF FISHCREEK,  
 DADE COUNTY, WISCONSIN

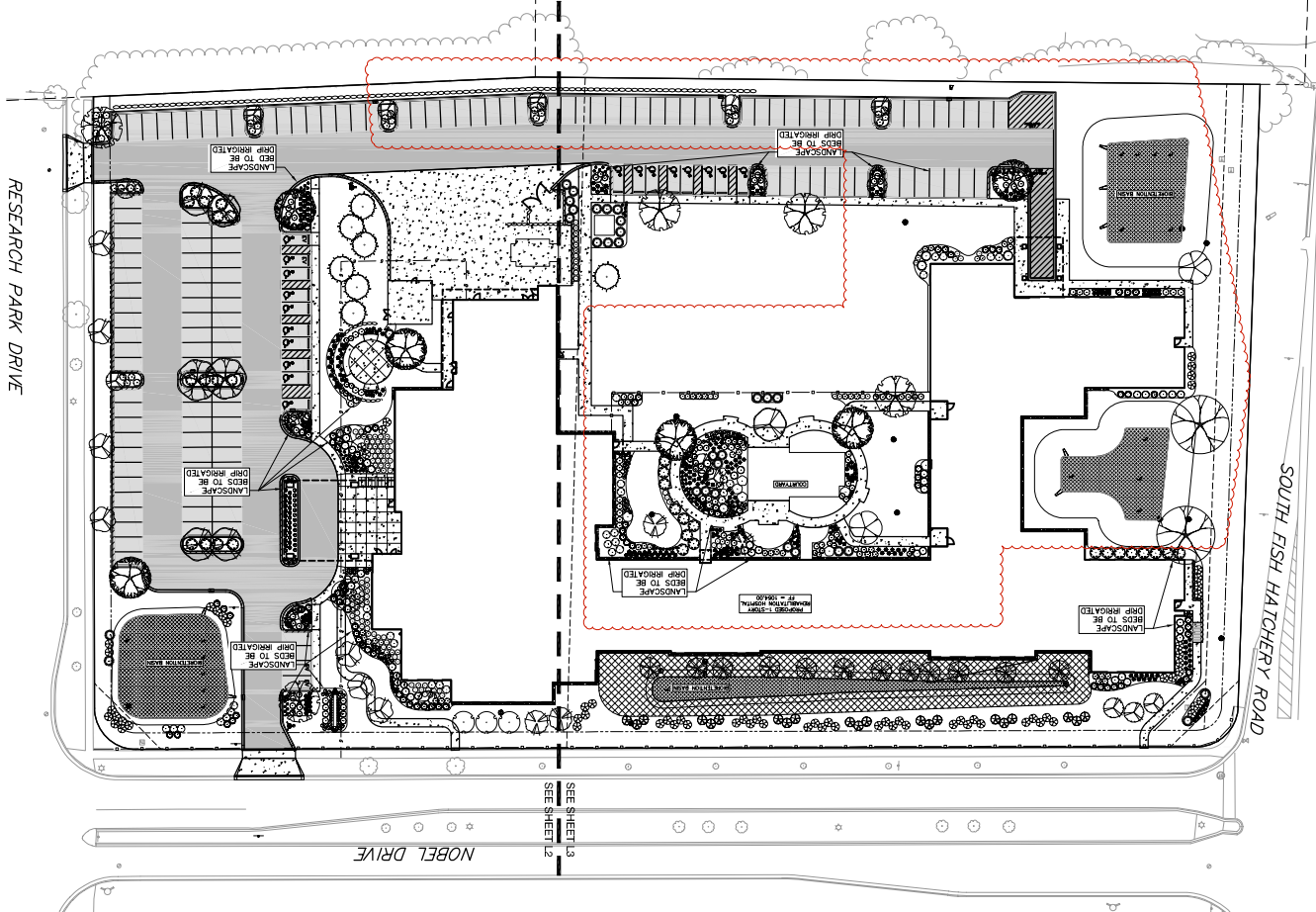
NO.	DATE	REVISIONS
1	1/25/2022	REVISED
2	02/22/22	REVISED

NO.	DATE	REVISIONS
1	01/27/22	REVISED



**PLANT SCHEDULE**

NO.	SYMBOL	PLANT NAME	SIZE	QUANTITY	NOTES
01	RT	DRAGON TREE	RT	1	ROTUNDA, COMMON NAME: DRAGON TREE
02	RT	DRAGON TREE	RT	1	ROTUNDA, COMMON NAME: DRAGON TREE
03	RT	DRAGON TREE	RT	1	ROTUNDA, COMMON NAME: DRAGON TREE
04	RT	DRAGON TREE	RT	1	ROTUNDA, COMMON NAME: DRAGON TREE
05	RT	DRAGON TREE	RT	1	ROTUNDA, COMMON NAME: DRAGON TREE
06	RT	DRAGON TREE	RT	1	ROTUNDA, COMMON NAME: DRAGON TREE
07	RT	DRAGON TREE	RT	1	ROTUNDA, COMMON NAME: DRAGON TREE
08	RT	DRAGON TREE	RT	1	ROTUNDA, COMMON NAME: DRAGON TREE
09	RT	DRAGON TREE	RT	1	ROTUNDA, COMMON NAME: DRAGON TREE
10	RT	DRAGON TREE	RT	1	ROTUNDA, COMMON NAME: DRAGON TREE
11	RT	DRAGON TREE	RT	1	ROTUNDA, COMMON NAME: DRAGON TREE
12	RT	DRAGON TREE	RT	1	ROTUNDA, COMMON NAME: DRAGON TREE
13	RT	DRAGON TREE	RT	1	ROTUNDA, COMMON NAME: DRAGON TREE
14	RT	DRAGON TREE	RT	1	ROTUNDA, COMMON NAME: DRAGON TREE
15	RT	DRAGON TREE	RT	1	ROTUNDA, COMMON NAME: DRAGON TREE
16	RT	DRAGON TREE	RT	1	ROTUNDA, COMMON NAME: DRAGON TREE
17	RT	DRAGON TREE	RT	1	ROTUNDA, COMMON NAME: DRAGON TREE
18	RT	DRAGON TREE	RT	1	ROTUNDA, COMMON NAME: DRAGON TREE
19	RT	DRAGON TREE	RT	1	ROTUNDA, COMMON NAME: DRAGON TREE
20	RT	DRAGON TREE	RT	1	ROTUNDA, COMMON NAME: DRAGON TREE
21	RT	DRAGON TREE	RT	1	ROTUNDA, COMMON NAME: DRAGON TREE
22	RT	DRAGON TREE	RT	1	ROTUNDA, COMMON NAME: DRAGON TREE
23	RT	DRAGON TREE	RT	1	ROTUNDA, COMMON NAME: DRAGON TREE
24	RT	DRAGON TREE	RT	1	ROTUNDA, COMMON NAME: DRAGON TREE
25	RT	DRAGON TREE	RT	1	ROTUNDA, COMMON NAME: DRAGON TREE
26	RT	DRAGON TREE	RT	1	ROTUNDA, COMMON NAME: DRAGON TREE
27	RT	DRAGON TREE	RT	1	ROTUNDA, COMMON NAME: DRAGON TREE
28	RT	DRAGON TREE	RT	1	ROTUNDA, COMMON NAME: DRAGON TREE
29	RT	DRAGON TREE	RT	1	ROTUNDA, COMMON NAME: DRAGON TREE
30	RT	DRAGON TREE	RT	1	ROTUNDA, COMMON NAME: DRAGON TREE
31	RT	DRAGON TREE	RT	1	ROTUNDA, COMMON NAME: DRAGON TREE
32	RT	DRAGON TREE	RT	1	ROTUNDA, COMMON NAME: DRAGON TREE
33	RT	DRAGON TREE	RT	1	ROTUNDA, COMMON NAME: DRAGON TREE
34	RT	DRAGON TREE	RT	1	ROTUNDA, COMMON NAME: DRAGON TREE
35	RT	DRAGON TREE	RT	1	ROTUNDA, COMMON NAME: DRAGON TREE
36	RT	DRAGON TREE	RT	1	ROTUNDA, COMMON NAME: DRAGON TREE
37	RT	DRAGON TREE	RT	1	ROTUNDA, COMMON NAME: DRAGON TREE
38	RT	DRAGON TREE	RT	1	ROTUNDA, COMMON NAME: DRAGON TREE
39	RT	DRAGON TREE	RT	1	ROTUNDA, COMMON NAME: DRAGON TREE
40	RT	DRAGON TREE	RT	1	ROTUNDA, COMMON NAME: DRAGON TREE
41	RT	DRAGON TREE	RT	1	ROTUNDA, COMMON NAME: DRAGON TREE
42	RT	DRAGON TREE	RT	1	ROTUNDA, COMMON NAME: DRAGON TREE
43	RT	DRAGON TREE	RT	1	ROTUNDA, COMMON NAME: DRAGON TREE
44	RT	DRAGON TREE	RT	1	ROTUNDA, COMMON NAME: DRAGON TREE
45	RT	DRAGON TREE	RT	1	ROTUNDA, COMMON NAME: DRAGON TREE
46	RT	DRAGON TREE	RT	1	ROTUNDA, COMMON NAME: DRAGON TREE
47	RT	DRAGON TREE	RT	1	ROTUNDA, COMMON NAME: DRAGON TREE
48	RT	DRAGON TREE	RT	1	ROTUNDA, COMMON NAME: DRAGON TREE
49	RT	DRAGON TREE	RT	1	ROTUNDA, COMMON NAME: DRAGON TREE
50	RT	DRAGON TREE	RT	1	ROTUNDA, COMMON NAME: DRAGON TREE



- IRRIGATION NOTES**
1. IRRIGATION SHALL BE INSTALLED AFTER ALL PRE GRADING IS COMPLETE.
  2. THIS PLAN DESIGNATES THE LOCATION AND AREAS OF LANDSCAPE BEDS TO RECEIVE IRRIGATION ONLY. IRRIGATION DESIGN IS BY OTHERS.

- PLANT MATERIAL NOTES**
1. ALL PLANTINGS SHALL CONFORM TO QUALITY REQUIREMENTS AS PER ANSI Z601.
  2. ALL PLANT MATERIAL SHALL BE HEALTHY AND FREE FROM DISEASE, PESTS AND OTHER DEFECTS.
  3. CONTACT LANDSCAPE ARCHITECT, IN WRITING, TO REQUEST ANY PLANT MATERIAL SUBSTITUTIONS DUE TO AVAILABILITY ISSUES.
  4. ALL PLANS SHALL BE GUARANTEED TO BE IN HEALTHY AND FLOURISHING CONDITION DURING THE TERM OF THE PROJECT.

- LANDSCAPE MATERIAL NOTES**
1. CONTRACTOR SHALL PROVIDE A SUITABLE MIXED TOPSOIL BLEND FOR ALL PLANTING AREAS WHERE REQUIREMENTS AS PER SECTION 620.2(1) OF THE STANDARD SPECIFICATIONS FOR HIGHWAY CONSTRUCTION. PROVIDE A MINIMUM OF 18" OF TOPSOIL IN ALL PLANTING AREAS AND 6" OF TOPSOIL IN AREAS TO BE SEEDING/SOILED.
  2. LANDSCAPE BEDS TO BE IRRIGATED SHALLOUDED HARDWOOD BARK MULCH TO 3" DEPTH AND 4" DEPTH WITH COMMERCIAL GRADE ALUMINUM LANDSCAPE EDGING, PERMANENT CLEANLINE 4"x4" OR EQUAL, COLOR BLACK ANODIZED.
  3. ALL TREES AND SHRUBS PLANTED IN LAND AREAS TO BE INSTALLED WITH A 5" DIAMETER MULCH MIXED WITH MULCH AS WELL AS TOPICALLY APPLIED TO TREE RING.
  4. AREAS SHOWN AS STONE ON PLAN TO BE 1/2" WASHED STONE 3" DEPTH MIN. AND EDGED WITH COMMERCIAL GRADE ALUMINUM LANDSCAPE EDGING, PERMANENT CLEANLINE 4"x4" OR EQUAL, COLOR BLACK ANODIZED. STONE MAINTENANCE STRIPS ALONG BUILDING TO BE 18" IN WIDTH.

- SEEDING AND PLUG PLANTING NOTES**
1. ALL DISTURBED AREAS SHALL BE SEEDING WITH MAHOGN PLANKS MIX BY LANDSCAPE SEED COMPANY OR EQUIVALENT, PER MANUFACTURER'S SPECIFIC APPLICATION RATES. ALL SEEDING AREAS ARE TO BE WATERED DAILY TO MAINTAIN ADEQUATE SOIL MOISTURE FOR PROPER ACCEPTANCE.
  2. INSTALL BIODEGRADABLE PLUG PLANTINGS AS 2' X 2' X 4" DEEP PLUS, 12" ON CENTER IN A EACH SPECIES RANDOMLY ACROSS PLANTING AREA FOR NATURAL APPEARANCE.
  3. MIX BY PRIME NURSERY. INSTALL PER MANUFACTURER'S SPECIFIC APPLICATION RATES. ALL SEEDING AREAS ARE TO BE WATERED DAILY TO MAINTAIN ADEQUATE SOIL MOISTURE FOR PROPER ACCEPTANCE.





