

Option 1ab – Aldermanic Districts (D#) and Wards (#) **DRAFT 10-27-21**

City of Fitchburg Population: 29,609, Town of Madison Population to be annexed in 2022: 1,390
Ideal Equal Population Distribution Per Alder District, to include Town of Madison Population = 7,750

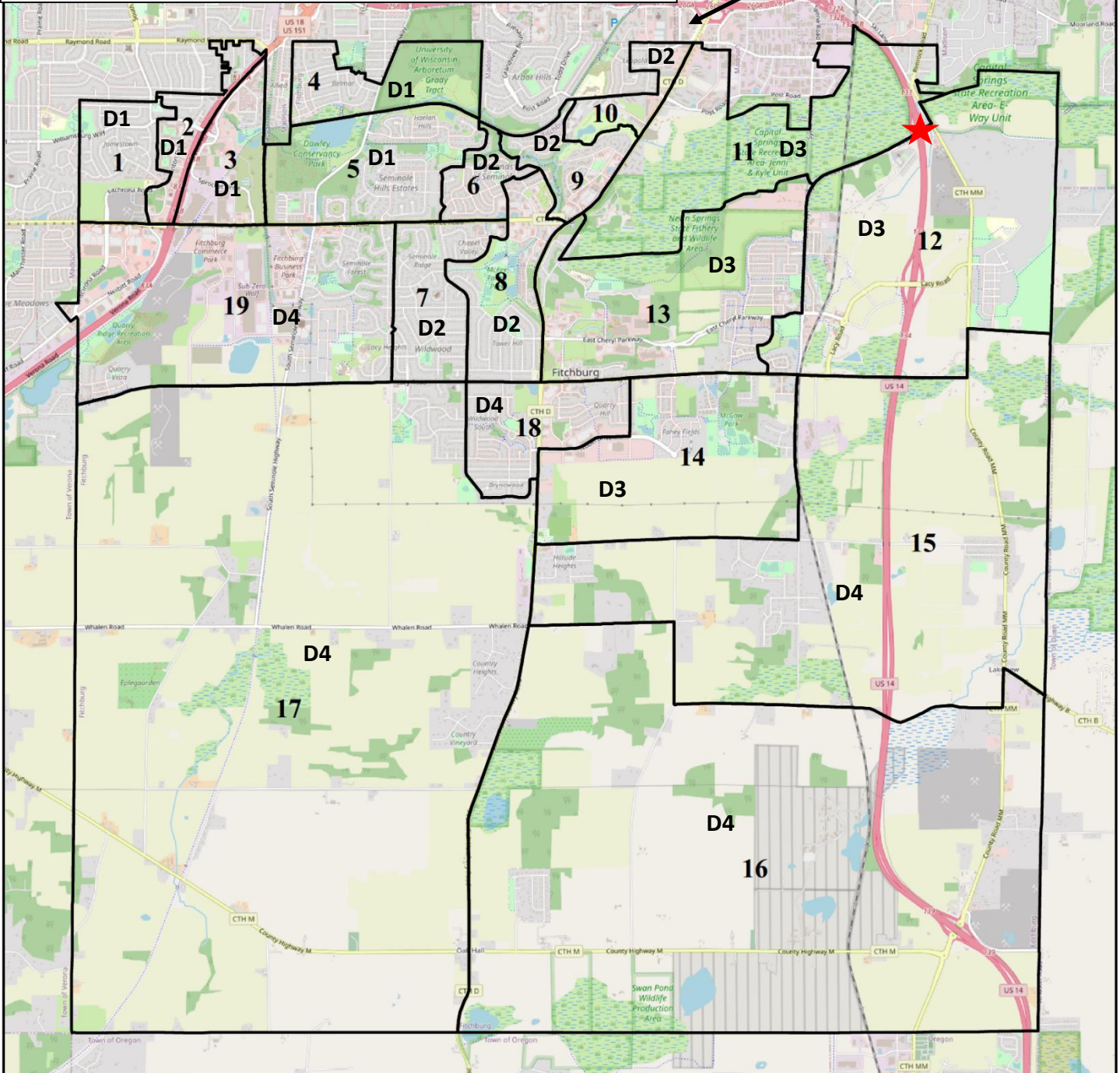
Alder District 1: Wards 1 – 5 (7,980)

Alder District 2: Wards 6 – 10 (8,088)

Alder District 3: Wards 11 – 14 (6,105)

Alder District 3: Wards 11 – 14 (6,105) + Town of Madison in 2022 (1,390) = (7,495)

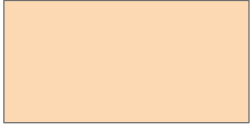

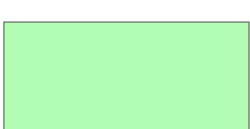
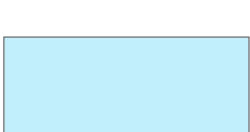
Alder District 4: Wards 15 – 19 (7,436)





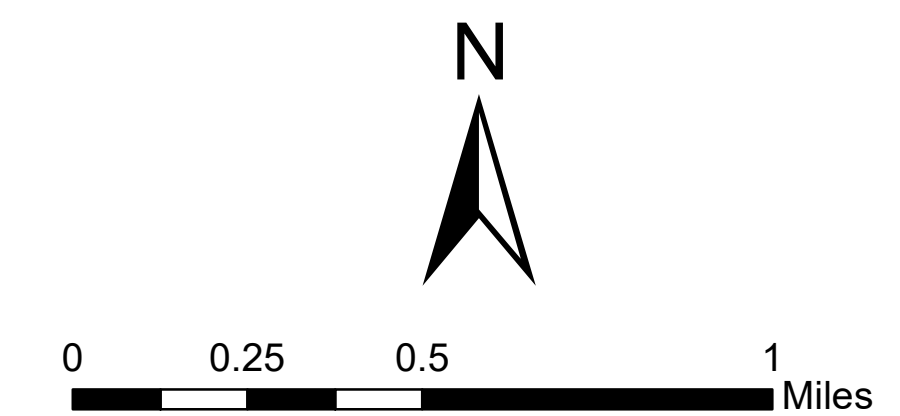
★ Revised border between Wards 11 and 12 from previous draft to ensure consistency with recently adopted County Supervisory Districts. No population in revised area.

CITY OF FITCHBURG Aldermanic Districts and Wards

Aldermanic Districts

-  District 1
(wards 1, 2, 3, 4, 5)
Polling Place: Little John's (Restaurant)
-  District 2
(wards 6, 7, 8, 9, 10)
Polling Place: Wyndham Garden
-  District 3
(wards 11, 12, 13, 14)
Polling Place: Community Center
-  District 4
(wards 15, 16, 17, 18, 19)
Polling Place: Fire Station 1

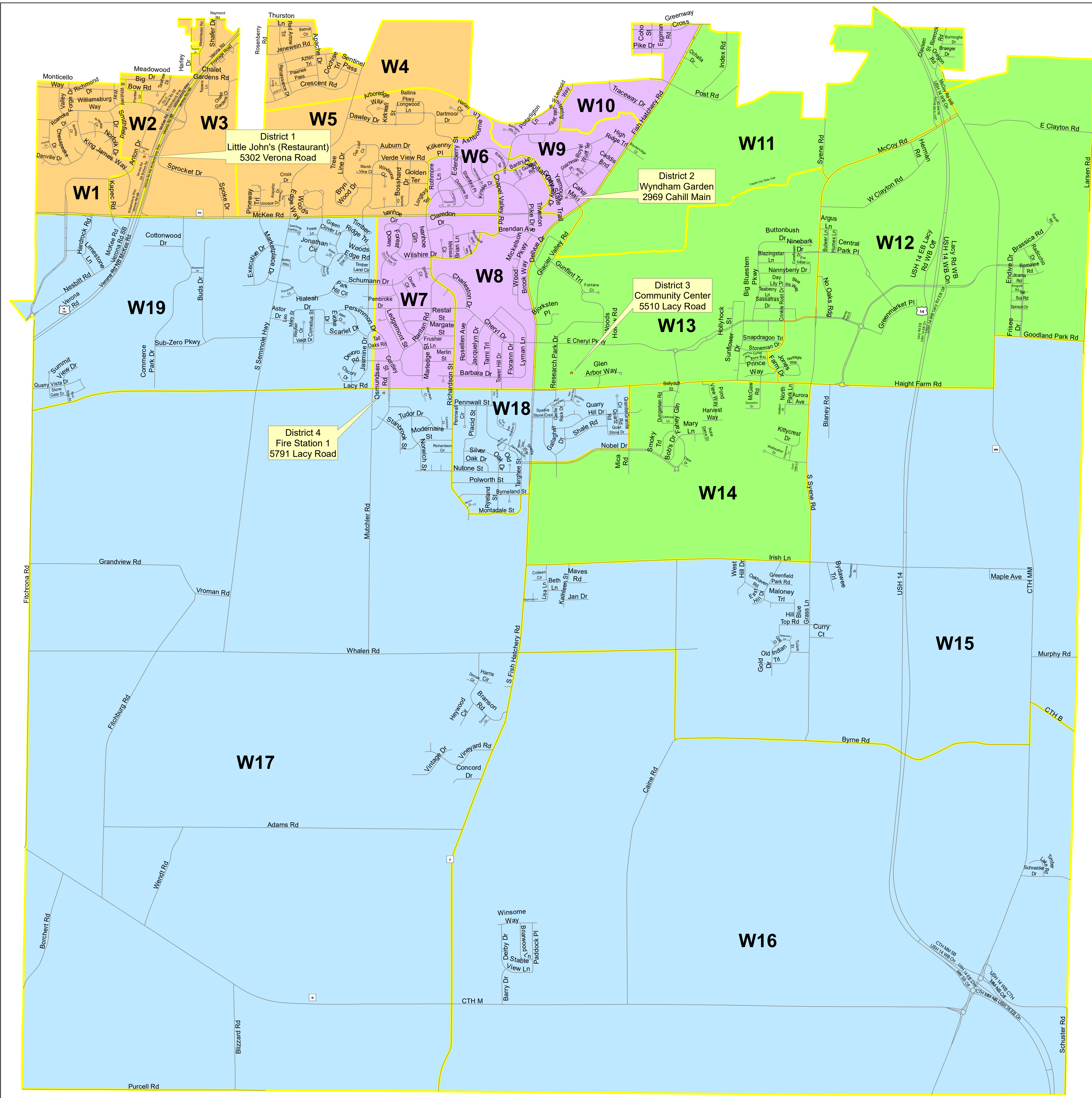
-  Polling Place
-  Ward Boundary



October 2021

Prepared by:
Planning & Zoning Dept.

Sources:
US Census Bureau, 2020
US Census TIGER Files & Dane County LIO



Option 1ab Demographics

Ward	Population	Pop 18+	White	Black	Hispanic	Asian	Am Indian	Pac Islldr	Other	Multi-Other
1	1,945	1,322	946	437	350	137	23	3	27	22
2	1,525	1,205	623	280	460	124	17	5	14	2
3	1,003	697	190	126	650	28	3	0	1	5
4	2,014	1,402	605	313	883	161	14	0	22	16
5	1,493	1,112	1,133	71	99	139	14	0	32	5
District 1	7,980	5,738	3,497	1,227	2,442	589	71	8	96	50
6	764	559	533	28	62	114	9	0	16	2
7	1,630	1,402	1,338	88	68	102	7	0	20	7
8	1,679	1,412	1,315	95	141	90	9	0	25	4
9	1,983	1,527	936	421	505	76	22	0	11	12
10	2,032	1,443	460	835	653	50	8	0	13	13
District 2	8,088	6,343	4,582	1,467	1,429	432	55	0	85	38
11	1,704	1,450	932	225	403	107	8	1	13	15
12	1,325	1,199	1,085	56	62	95	11	1	10	5
13	1,719	1,428	1,459	56	69	113	13	0	5	4
14	1,357	1,229	1,147	46	94	59	1	0	6	4
District 3	6,105	5,306	4,623	383	628	374	33	2	34	28
Town of Madison	1,390	1,068	456	368	494	39	4	2	4	23
District 3 with Town of Madison (2022)	7,495	6,374	5,079	751	1,122	413	37	4	38	51
15	966	789	809	29	62	44	5	0	11	6
16	1,328	1,220	834	345	96	21	28	0	2	2
17	1,360	1,073	1,107	50	112	56	10	3	20	2
18	1,898	1,517	1,577	39	111	115	22	5	22	7
19	1,884	1,414	1,598	41	55	148	11	0	28	3
District 4	7,436	6,013	5,925	504	436	384	76	8	83	20

2010 Demographics

Ward	Population	Pop 18+	White	Black	Hispanic	Asian	Am Indian	Pac Islldr	Other	Multi-Other
District 1	6,485		3,058	996	1,923	427	25	6	14	36
District 2	6,318		5,212	317	313	439	14	1	5	17
District 3	6,307		3,094	1,028	1,846	270	25	4	4	36
District 4	6,150		5,091	511	259	217	46	3	5	18