

April 6, 2016

## In This Issue

1. Conserve Water During “[My Water Pledge](#)” Challenge April 1-30
2. Flight of Butterflies Movie Premier April 10<sup>th</sup> in Fitchburg
3. Brush and Yard Waste Collections Begin April 11<sup>th</sup>
4. Spring 2016 Waterway Cleanups Set for April 23<sup>rd</sup> & April 28<sup>th</sup>
5. Spring 2016 Shred Day & MedDrop Events Set for April 23<sup>rd</sup>
6. Fitchburg Arbor Day and Migratory Bird Day Events Set for May 7<sup>th</sup>
7. New Date for Spring 2016 Electronics Recycling Event
8. Recycle Large Plastic Items at Fitchburg’s Recycling Drop Off Site
9. Order Compost Bins and Rain Barrels by April 18<sup>th</sup> to Save \$10
10. Bag Garlic Mustard and other Invasives for Disposal
11. Fitchburg Library Needs Your Trash to Turn into Treasures
12. Community Calendar

## Conserve Water During “[My Water Pledge](#)” Challenge April 1-30

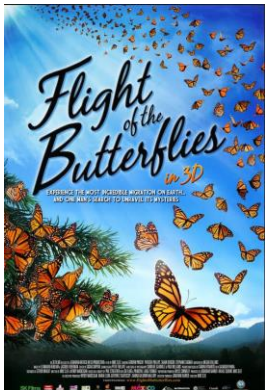
The **Fifth Annual National Mayor's Challenge for Water Conservation** has started. Do your part to conserve our precious water resources by taking one minute to go to [MYWATERPLEDGE.COM](http://MYWATERPLEDGE.COM) this Earth Month (April 1-30), and make your pledge to conserve water and energy. By pledging today, you will be eligible for over \$50,000 in prizes like a 2016 Toyota Prius v, a \$1000 green home improvement shopping spree, and many more energy savings items for your home! For more tips on water conservation, visit Fitchburg’s [website](#).



## Fitchburg Screening of ‘Flight of the Butterflies’ April 10<sup>th</sup> at AMC Star Cinema

[Friends of Lake Wingra](#) is pleased to host the Madison premier screening of the nationally recognized movie, [Flight of the Butterflies in 3-D](#). This 40-minute, child appropriate IMAX film showcases the life cycle of the Monarch butterfly and its’ amazing journey from Canada and the Northern United States to the over-wintering grounds in Mexico. The amazing story and breathtaking imagery is sure to captivate even the youngest budding naturalists.

Come and learn about Friends of Lake Wingra’s Monarch Butterfly Project and things you can do to boost Monarch populations like limiting chemicals applied to yards and planning milkweed and other native species. David Thompson, a FOLW board member, has been raising butterflies and sharing his experience with local children by delivering chrysalises to local classrooms. Please join us, get inspired and help protect this dwindling specie.



What: Flight of the Butterflies Premier Screening

When: April 10<sup>th</sup> 11:30am

Where: AMC Fitchburg, 6091 McKee Road

Tickets: <http://www.brownpapertickets.com/event/2531840>

Price: \$8.00

## Brush and Yard Waste Collections Begin April 11<sup>th</sup> at 6:30 a.m.

The 2016 Yard Waste and Brush collections kick off on Monday, April 11<sup>th</sup>. Residents should have both brush and yard waste set out at the curb by 6:30 a.m. on Monday mornings of the collection week, regardless of which day your refuse and recyclables are collected. Residents participating in the City's Solid Waste Collection Contract receive 14 curbside brush collections and four yard waste collections between April and November. Paper copies of the collection schedule were printed in the December 2015 *Fitchburg Star* and are available at City Hall or at: [www.fitchburgwi.gov/solidwaste](http://www.fitchburgwi.gov/solidwaste). Read on for curbside pickup guidelines.

**Yard waste** includes leaves and grass clippings, twigs less than 3/4-inch diameter (thumb-size), as well as non-woody garden material, such as flowers, weeds, and garden waste. Yard waste must be placed in a reusable container or bag no larger than 50 gallons or 50 lbs, and should be placed on your driveway or terrace, not in the street.

The photo provides the greenest (#1) to least green (#4), but still acceptable, curbside yard waste set out options:

1 – No yard waste set out - resident mulches into the lawn or composts on site, reduces labor and transportation costs and emissions

2a – Reused plastic cart or container, reusable hundreds of times

2b – Reusable ~50 gallon polybag w/ drawstring (~\$3-6/polybag)

2c – Reusable ~50 gallon polybag w/ handles and drawcord (~\$8-10/polybag)

3a – Compostable ~30 gallon paper bag w/ folded top (~\$0.50-1/bag)

3b – Compostable ~50 gallon plastic-like bag (\$0.60-1.20/bag)

3c – Compostable ~30 gallon plastic-like bag (\$0.60-1.20/bag)

4 – Non-recyclable ~30 gallon black plastic bag – MUST be left untied\* (\$0.10-0.50/bag)



\*Please note that Non-compostable bags must not be tied to allow for emptying yard waste without ripping the bag open. Residents are encouraged to leave a container along with note: "Please place bags in here after emptying" for Pellitteri to place the bags in after they are emptied. This will allow for bags to be reused again and not sent to the landfill.

All residents may also take yard waste to the City's Recycling Drop Off Site, 2373 S. Fish Hatchery Rd. The site is open every day during daylight hours.

**Brush** collected curbside includes branches greater than thumb size (3/4" diameter), less than 6" diameter, and cut to lengths of 5' or less. Brush should be placed on your driveway or terrace, and not in the street. Visit [www.fitchburgwi.gov/solidwaste](http://www.fitchburgwi.gov/solidwaste) for full guidelines or contact Public Works at [publicworks@fitchburgwi.gov](mailto:publicworks@fitchburgwi.gov) or 270-4260 if you have any questions.

## Spring 2016 Waterway Cleanups Set for April 23<sup>rd</sup> & April 28<sup>th</sup>

Join us rain or shine for Fitchburg's 2016 Spring Waterway Cleanups planned for:

- Saturday, April 23<sup>rd</sup> from 8:30-10:30 a.m. Meet at the east end of Ninebark at the asphalt multi-use path (Ninebark Dr. and Syene Rd.).
- Saturday, April 23<sup>rd</sup> from 9 a.m.-11a.m. Meet at the Apache Pond, 4523 Crescent Road.
- Thursday, April 28<sup>th</sup> from 2-5 p.m. Meet at Target Fitchburg near Fitchrona Road. Join Target staff volunteers to clean up various streets and waterways throughout Orchard Pointe (Fitchrona Rd., Nesbitt Rd., Limestone Ln. and adjacent public stormwater facilities).

Anyone interested in being a group leader and coordinating a cleanup in your neighborhood may contact Rick Eilertson, Fitchburg Environmental Engineer, at [rick.eilertson@fitchburgwi.gov](mailto:rick.eilertson@fitchburgwi.gov) or (608) 270-4264. Garbage bags, recycling bags and a limited number of gloves are provided for all volunteers as well as small prizes and refreshments. Volunteers are encouraged to wear boots and bring work gloves. Please be forewarned: Restroom facilities are often not convenient to the planned cleanup locations. Further details and maps of the waterway cleanups will be posted at [www.fitchburgwi.gov/stormwater](http://www.fitchburgwi.gov/stormwater) closer to the events.

## Spring 2016 Shred Day & MedDrop Events Set for April 23<sup>rd</sup>

Fitchburg's Spring 2016 **Shred Day Event** will be held from 8-11a.m. on Saturday, April 23<sup>rd</sup> behind Oak Bank, 5951 McKee Road, at the corner of Executive & Marketplace Drives. Look for Pellitteri's Shred Truck in the parking lot. This event provides shredding to destroy up to five banker's boxes of confidential paper documents for recycling **FREE** of cost.



The event is being sponsored by City of Fitchburg, Oak Bank, and Pellitteri Waste Systems. Please contact Jeff Potter (Pellitteri) at 257-6232 ext 323, [jeffp@pellitteri.com](mailto:jeffp@pellitteri.com) or Rick Eilertson at 270-4264 or [rick.eilertson@fitchburgwi.gov](mailto:rick.eilertson@fitchburgwi.gov), with any questions about the shred event.

**Med Drop** will be held from 8-11a.m. on Saturday, April 23<sup>rd</sup> at the Fitchburg Police Department, west entrance to City Hall, 5520 Lacy Rd. Empty pills into a clear plastic bag and recycle the containers at home. Any liquids, gels, creams, etc. should be left in the original container and placed in a clear plastic bag. No sharps, or lancets will be accepted – Sharps and lancets can be taken to Hometown Pharmacy, 3000 Cahill Main, Ste 114, or Walgreens, 2931 S. Fish Hatchery Rd. Fitchburg's permanent MedDrop box is also available Mondays through Fridays from 7:30am to 4:30pm at the Fitchburg Police Department. Hometown Pharmacy also takes "uncontrolled substances" during their regular business hours. Please contact Rick Eilertson, Environmental Engineer, at [rick.eilertson@fitchburgwi.gov](mailto:rick.eilertson@fitchburgwi.gov), 270-4264, with any questions about the Med Drop Event.



Information about other options for solid waste reduction, reuse, or recycling may be found in Fitchburg's 2016 Recycling Guide on Fitchburg's web page at: [www.fitchburgwi.gov/solidwaste](http://www.fitchburgwi.gov/solidwaste). Hard copies are available in the lobby of Fitchburg City Hall. Idling Reduction signage will be posted at both events to remind drivers to turn off their engine while waiting more than 10 seconds.

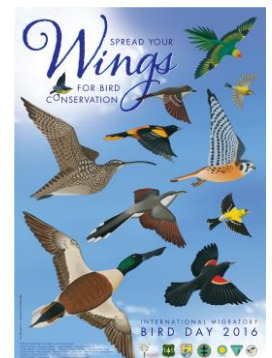


## Fitchburg Arbor Day and Migratory Bird Day Events Set for May 7<sup>th</sup>



Mark your calendars to celebrate the 144<sup>th</sup> year of Arbor Day and International Migratory Bird Day on May 7<sup>th</sup> from 8:30 a.m.-noon at Swan Creek Park, 5175 E. Cheryl Parkway, rain or shine. We hope you can join us for the following activities:

- 8:30-10 a.m. – Birding in Swan Creek Park with David Drake, UW-Extension
- 9:30 a.m. – Bird & Tree City Recognition
- 10 a.m. – Tree planting with Mayor Arnold
- 10:30 a.m. – Meet the Raptors – Hoos Woods
- 11:30 a.m. – Monarch Wayside Installation
- Fri., May 6, 6:30pm – [Nine Springs Evening Birding Event](http://www.madisonaudubon.org) ([www.madisonaudubon.org](http://www.madisonaudubon.org))



For more information, contact [Anna Healy](mailto:anna.healy@fitchburgwi.gov), Fitchburg Urban Forester/Naturalist, at 270-4289.

## May 7<sup>th</sup> New Date for Spring 2016 Electronics Recycling Event

The Electronics Recycling Event will be held on Sat., May 7<sup>th</sup> from 8-11a.m. at Surplus-IT's warehouse, 901 Watson Avenue. Look for directional signage from the intersection of Fish Hatchery Road and Greenway Cross heading to the east.



Items Accepted:

**Free!**: Computers, LCD (Flat panel liquid crystal display) Monitors, Printers, Stereo Equipment, Media (cds, dvds, floppy disks), lead acid and other recyclable batteries, Styrofoam Packing Peanuts

\$0.25/lb Charge: VCR & Cassette Tapes & Alkaline Batteries

\$5 Charge: Microwaves, other Kitchen Electronics

\$15 Charge: All CRT (Cathode Ray Tube) Monitors

\$25 Charge: TVs less than 27", Refrigerators, Dehumidifiers, Air Conditioners

\$35 Charge: TVs 27" or larger (console TV's may cost more for disposal)



Please contact Lee Shinefield (Surplus-IT) at 209-8000, [lee@surplus-IT.com](mailto:lee@surplus-IT.com) or Holly Powell at 270-4263 or [holly.powell@fitchburgwi.gov](mailto:holly.powell@fitchburgwi.gov), with any questions about electronics recycling.

Idling Reduction signage will be posted at each event to remind drivers to turn off their engine while waiting more than 10 seconds.

Another option for recycling small electronic devices and batteries is the "E-Cycling Bin" in the Fitchburg City Hall Lobby, 5520 Lacy Road. The "E-Cycling Bin" is accessible 24/7 and accepts rechargeable and alkaline batteries of all sizes, cell phones, empty inkjet/toner print cartridges, eye glasses and hearing aids for recycling.



Information about other options for solid waste reduction, reuse, or recycling may be found in Fitchburg's 2016 Recycling Guide on Fitchburg's web page at: [www.fitchburgwi.gov/solidwaste](http://www.fitchburgwi.gov/solidwaste). Hard copies are available in the lobby of Fitchburg City Hall.

## Recycle Plastic Bulky Items at Fitchburg's Recycling Drop Off Site

In 2015, a special "Plastic Bulky Items" dumpster was added at Fitchburg's Recycling Drop Off Site, 2373 S.

Fish Hatchery Rd. Plastic containers smaller than basketball size may be placed in your blue curbside recycling cart; however, larger plastic bulky items (e.g. plastic pails, plastic bins, plastic crates, plastic jugs, plastic coolers, plastic lawn furniture, etc.) can be taken to Fitchburg's Recycling Drop Off Site. Please refer to the graphic on the sign and make sure that items placed in this dumpster are "all plastic" in order to avoid the ~\$200/item fine.



For more Information about other options for solid waste reduction, reuse, or recycling, check out Fitchburg's 2016 Recycling Guide at: [www.fitchburgwi.gov/solidwaste](http://www.fitchburgwi.gov/solidwaste). Hard copies are available at Fitchburg's Recycling Drop Off Site and in the Fitchburg City Hall lobby.

## Order Compost Bins and Rain Barrels by April 18<sup>th</sup> to Save \$10

This year's Madison Compost and Rain Barrel sale is set for Saturday, May 7<sup>th</sup> at the Alliant Energy Center parking lot. Pre-order online before April 18<sup>th</sup> and save an additional \$10 off your purchase and pay no shipping charges. This event is open to Madison residents and non-residents. Visit [www.rainreserve.com/madison](http://www.rainreserve.com/madison) to place your pre-order by April 18<sup>th</sup>.



## Bag Garlic Mustard and other Invasives for Disposal



Many residents and businesses have been identifying and removing garlic mustard and other invasive plants (e.g. Japanese Knotweed, Hedge Parsley, Dames Rocket, Wild Parsnip, etc.) from their property. This is great! But just as important in the eradication of these highly invasive plants is that everyone follow-through on sending these plants to the landfill so the seeds can't mature and start new plants. If you have small amounts, you can just bag them and place in your green refuse cart. For large

amounts, you can bag them and place them in the dumpster marked "Yardwaste Bags, Invasive Plants & Empty Oil Containers Only" at Fitchburg's Recycling Drop Off Site (2373 S. Fish Hatchery Rd.).



## Fitchburg Library Needs Your Trash to Turn into Treasures

Thank you for all the paper towel and toilet paper tubes that have made their way to our department. They will be put to good use! We are also searching for the following for upcoming programs:



- 1) Clear plastic water bottles (16.9 fl. oz. size) with caps if possible (collecting through April 23)
- 2) Clean cereal, Kleenex, and other cardboard boxes that have a "recycling symbol" or information on them (collecting through April 23)
- 3) Clean **cardboard** egg cartons (ongoing need)
- 4) Shoeboxes with covers (ongoing need)
- 5) **Glass** baby food jars (ongoing need)

You can drop off items at the Fitchburg Public Library, 5530 Lacy Rd. during regular library hours.

## Community Calendar

- League of Women Voters, [Water From the Tap: Is It Safe to Drink?](#), April 6, 7-8:30 p.m. Capitol Lakes Grand Hall, 333 W. Main St., Madison.
- [Yahara Lakes 101: Climate change, lakes levels and flooding](#), April 14, 8-9 a.m. at the Edgewater Hotel, 1001 Wisconsin Place. \$10 at the door.
- [Water & Justice: Flint, California, Palestine](#), April. 14 at 7 p.m., UW-Madison Pyle Center, 702 Langdon St.
- Nelson Earth Day Conference, [Everyone's Earth: Sharing Experiences on a Restless Planet](#), 9 a.m.-5 p.m., Monona Terrace, 1 John Nolen Dr.
- [Science, Policy & Water Summit](#), May 10, 8 a.m.-5 p.m., UW-Madison Union South, 1308 Dayton St.



\* \* \* \* \*

Please contact [Erika Kluetmeier](mailto:erika.kluetmeier@fitchburgwi.gov), Sustainability Specialist, at [erika.kluetmeier@fitchburgwi.gov](mailto:erika.kluetmeier@fitchburgwi.gov) or 270-4274 if you have any questions, comments, and/or suggestions on future Green E-News topics.