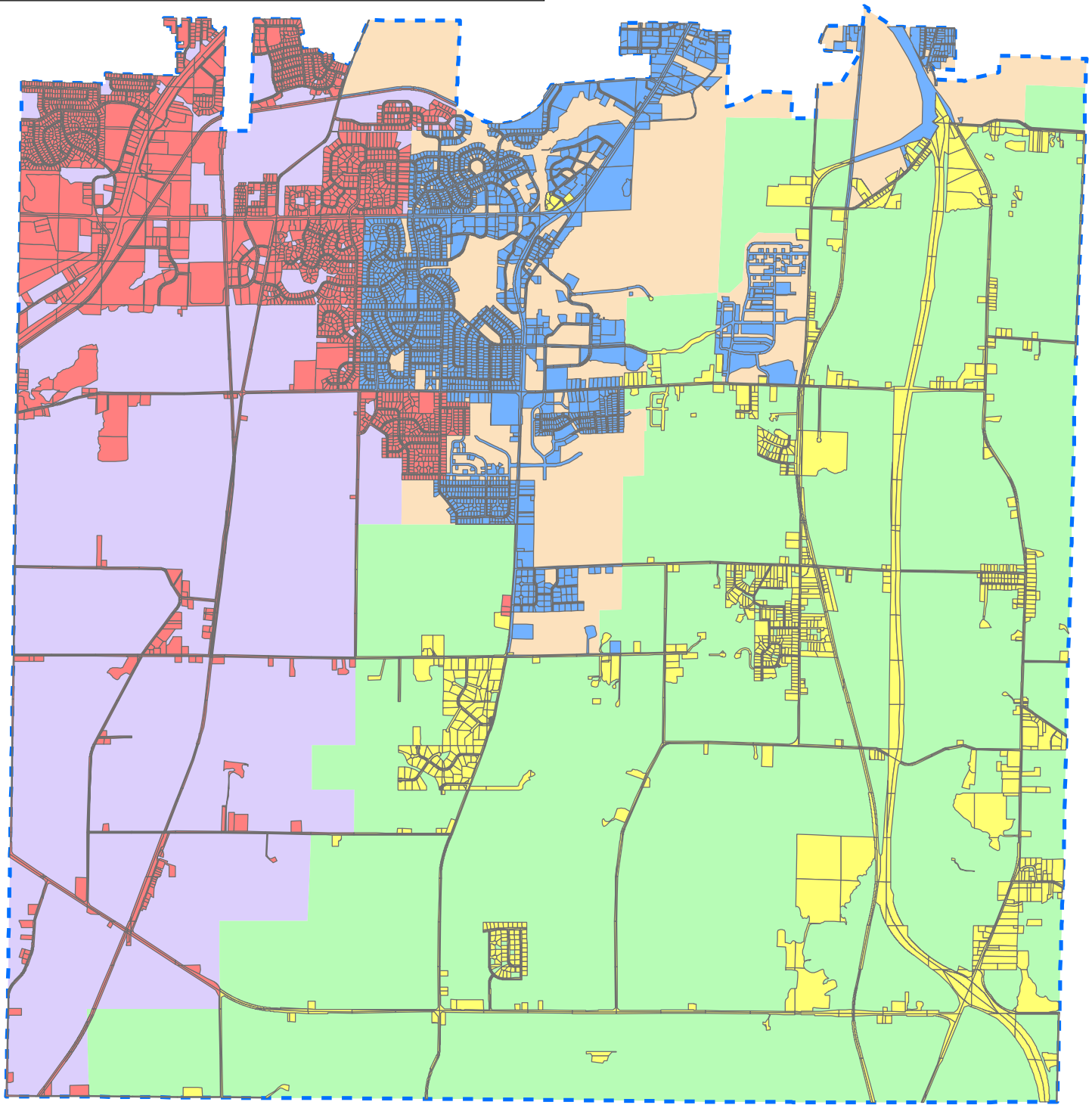
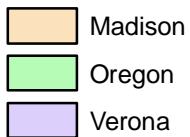


School District Development Pattern



District Boundaries



2005 Development



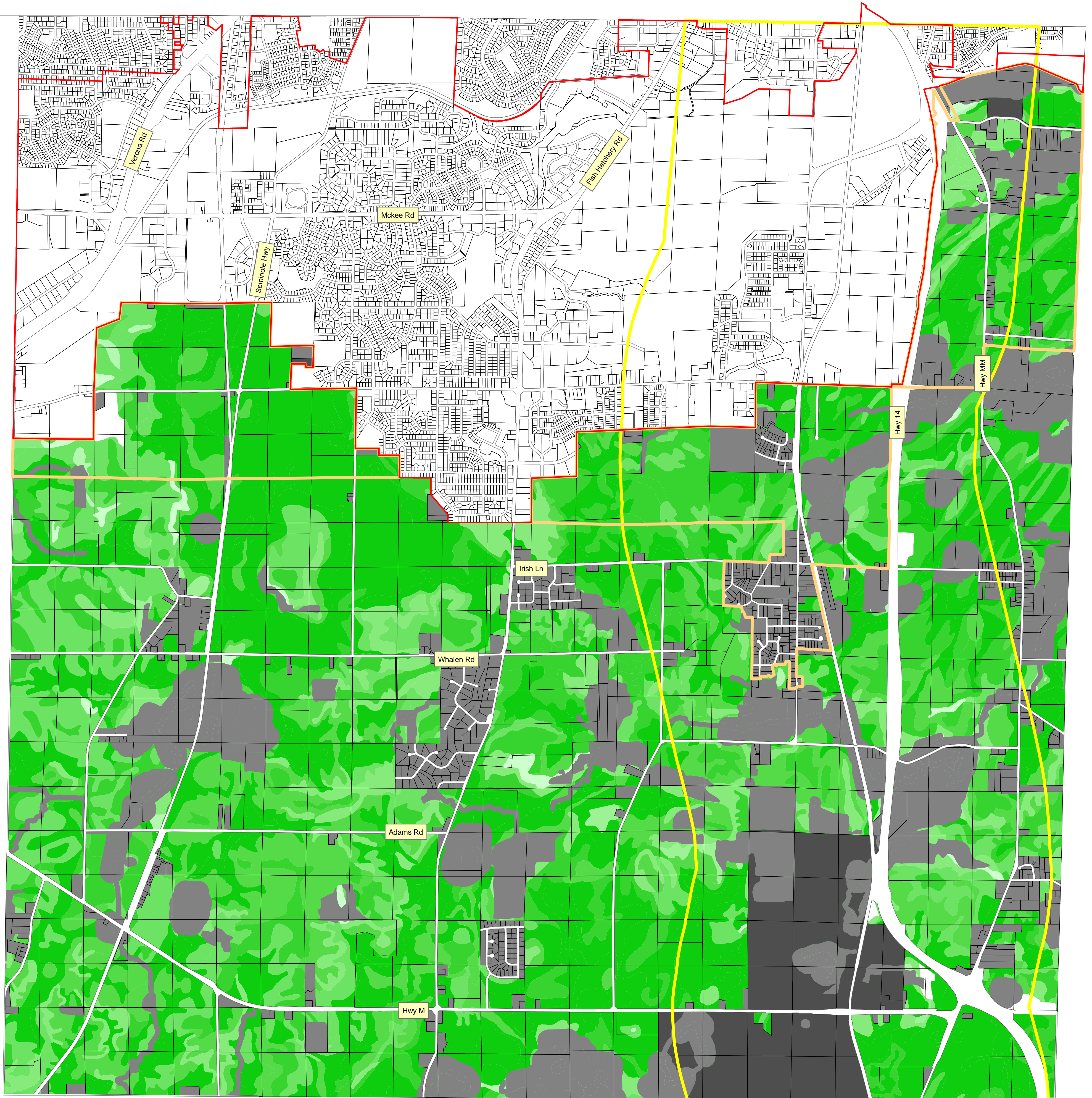
Prepared: March 2007

Source Data:
Dane County LIO & City of Fitchburg



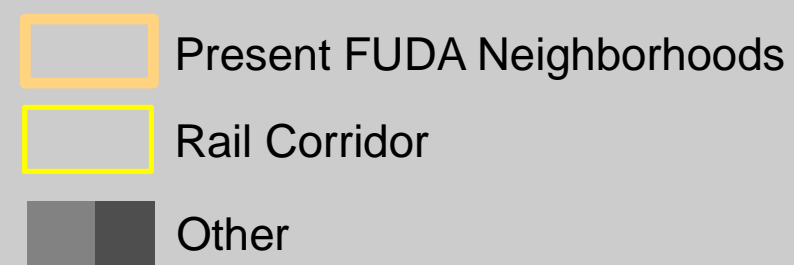
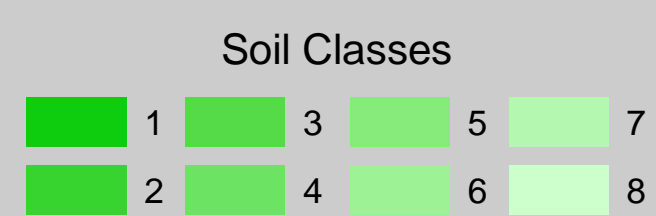
School District	Total Acres	Developed Acres	% Developed	Total Assessed Value	Per Acre Value
Madison	3,637	1,687	46.4%	\$ 913,558,100	\$ 251,185
Verona	6,801	2,099	30.9%	\$ 808,897,900	\$ 118,938
Oregon	12,058	1,870	15.5%	\$ 205,617,100	\$ 17,052

Soil Classes



Analysis Soil Classes

* Map depicting the areas of the soil classes.



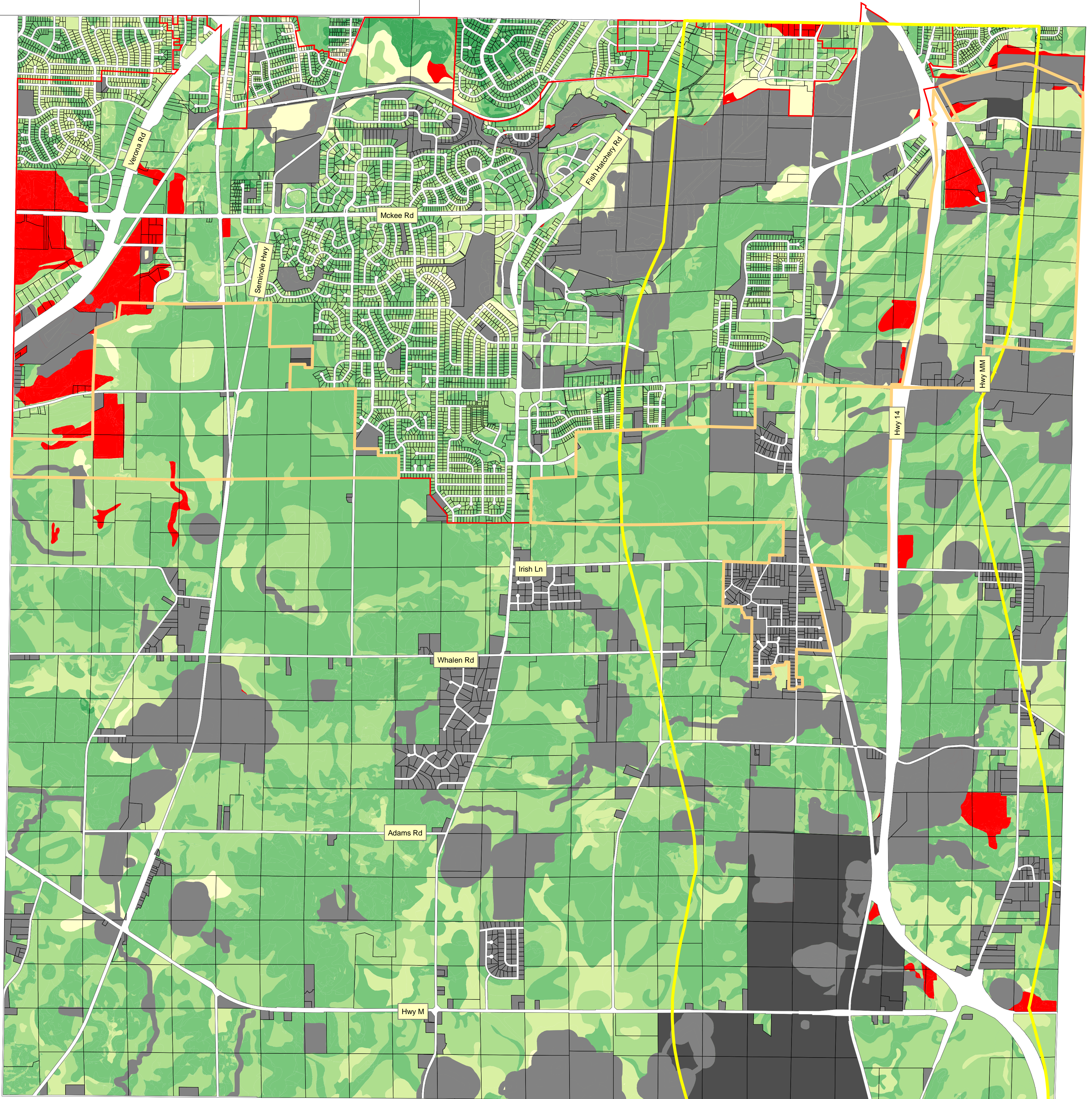
Prepared: April 2007

Source Data:
Dane County LIO & City of Fitchburg

0 1,250 2,500 5,000 Feet

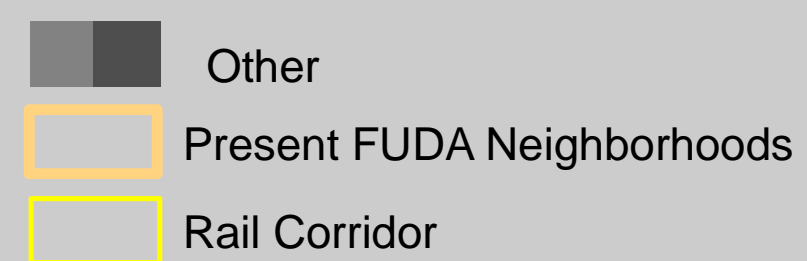
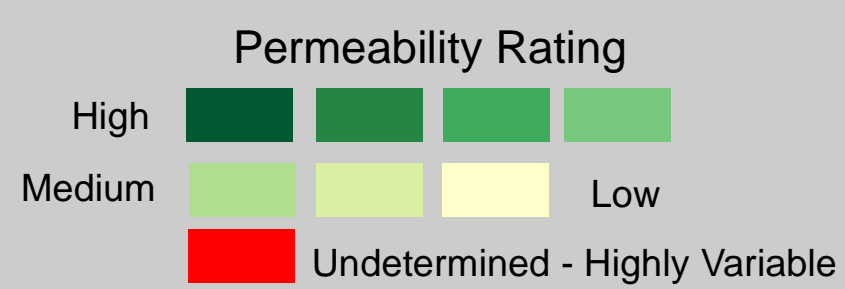


Natural Infiltration



Analysis of Infiltration as it Occurs Naturally

* Permeability is scored based on the most limiting soil layer in the soil column, measured to a depth of five feet.



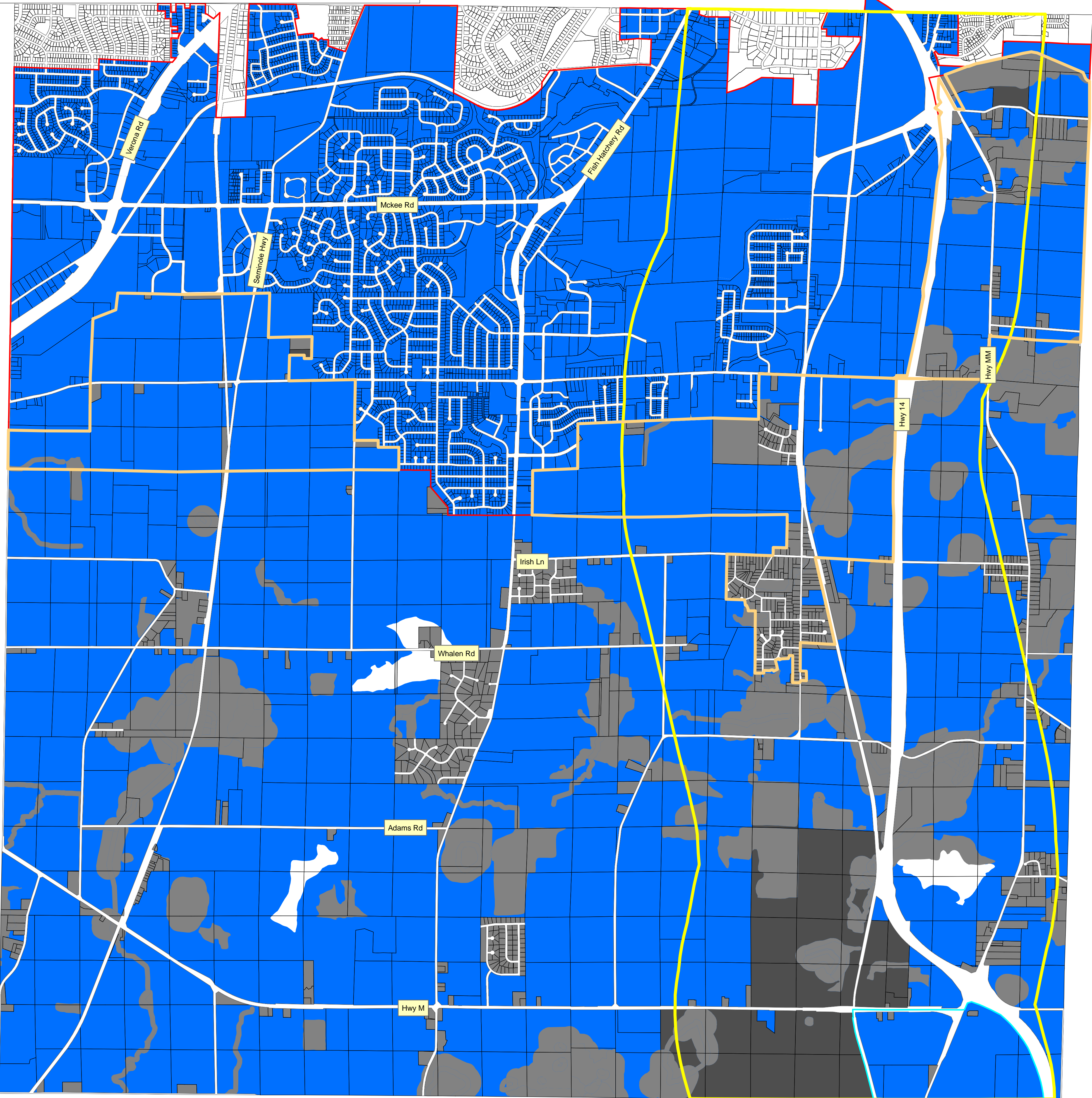
Prepared: April 2007

Source Data:
Dane County LIO & City of Fitchburg

0 1,250 2,500 5,000 Feet



Water Distribution Pressure Areas



Analysis of Water Distribution Areas

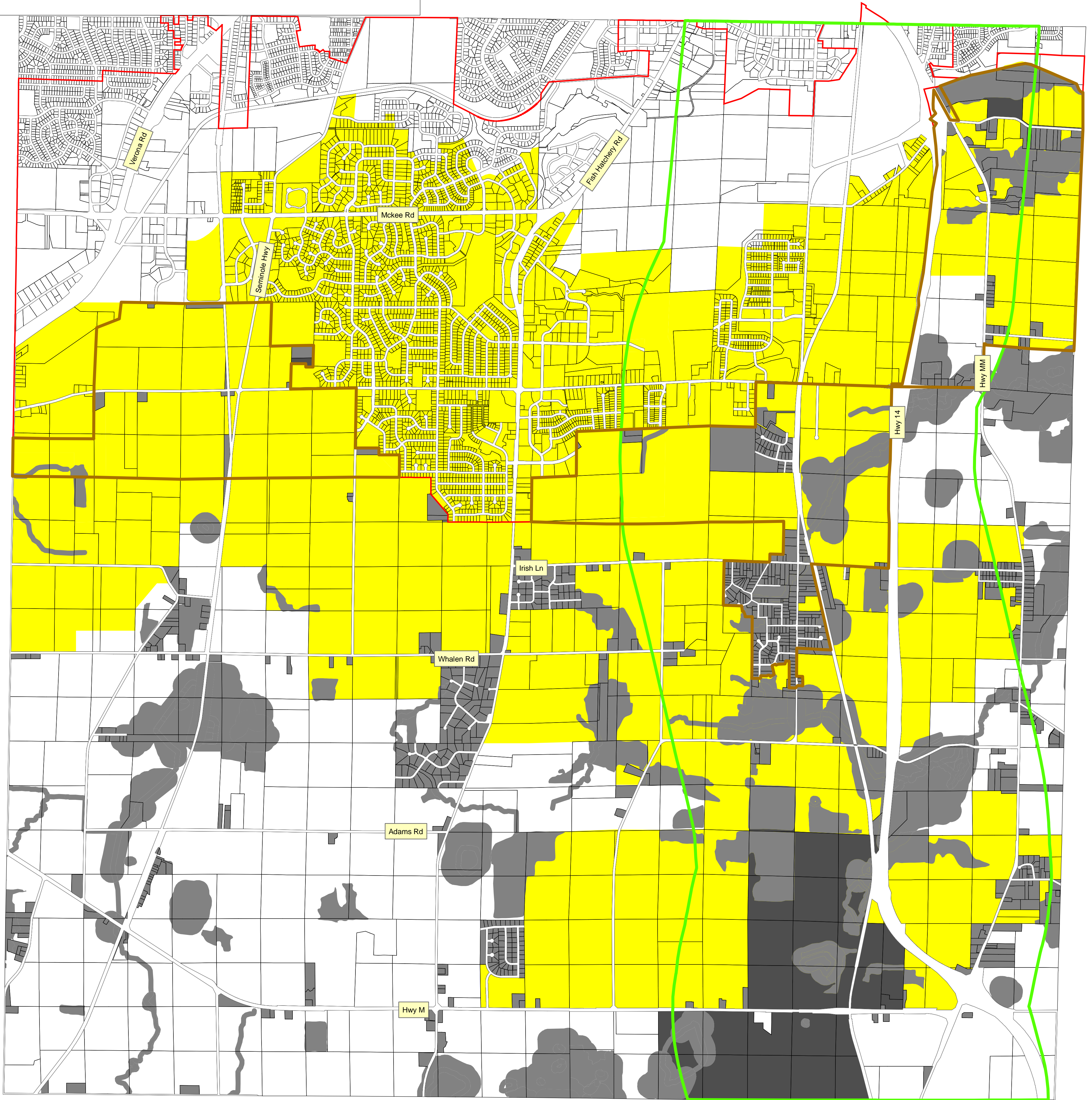
* Map depicting the areas where water distribution pressure can be met.
(Some areas may need site analysis)

- Water Distribution Areas
- Other
- Present FUDA Neighborhoods
- Rail Corridor

Prepared: April 2007
 Source Data: Dane County LIO & City of Fitchburg
 0 1,250 2,500 5,000 Feet



Gravity Flow Sewer



Analysis of Gravity Flow Sewer

* Map depicting the areas where gravity flow sewer can be met with current interceptors.

- Gravity Flow Sewer Areas
- Other
- Present FUDA Neighborhoods
- Rail Corridor

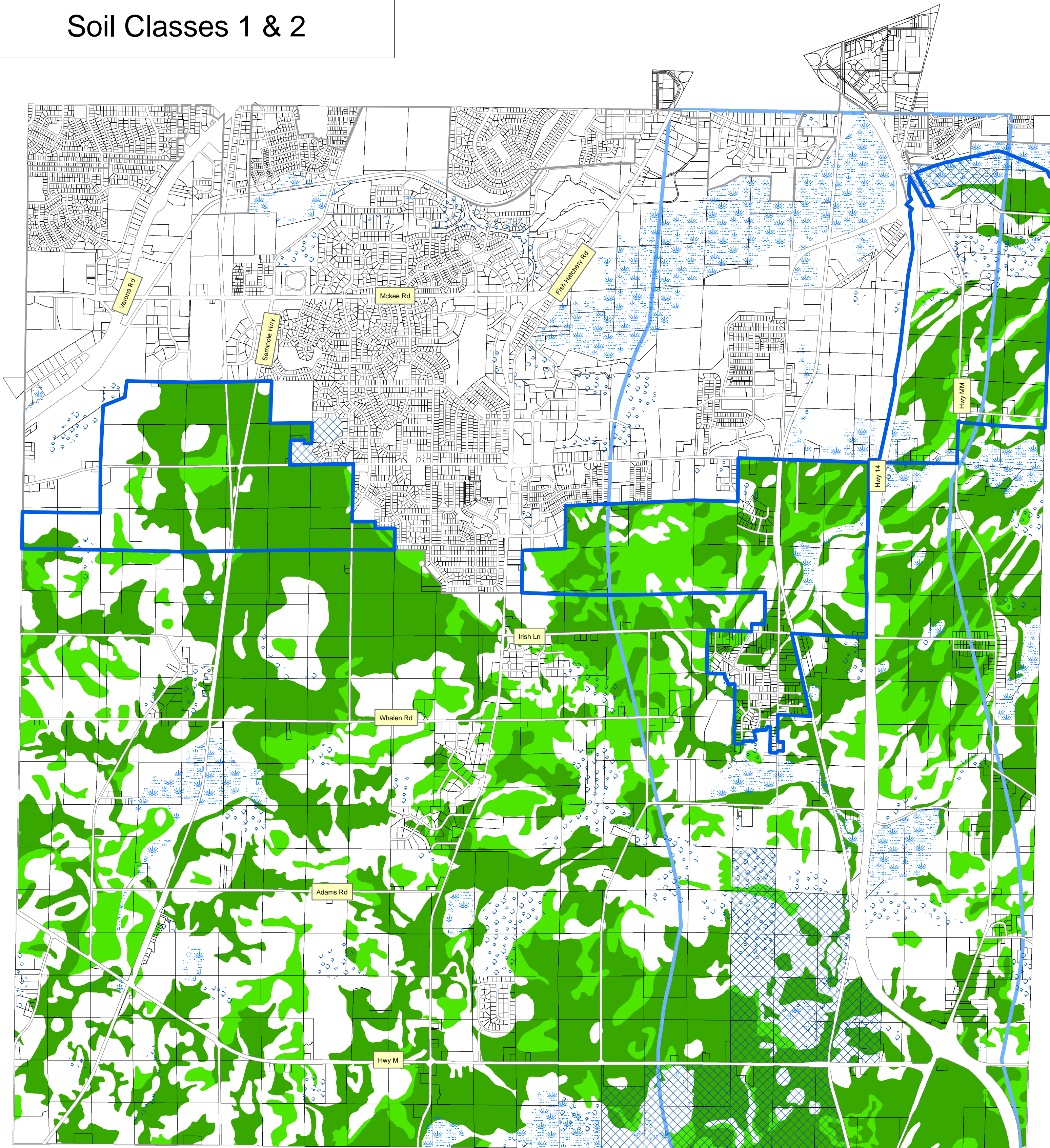
Prepared: April 2007

Source Data:
Dane County LIO & City of Fitchburg

0 1,250 2,500 5,000 Feet



Soil Classes 1 & 2



Analysis Soil Classes 1 and 2

* Map depicting the areas of the top 25% of soil classes (1 & 2).

- Soil Class 1
- Soil Class 2

- Wetlands
- Institutions
- Rail Corridor
- Woods
- Present FUDA Neighborhoods

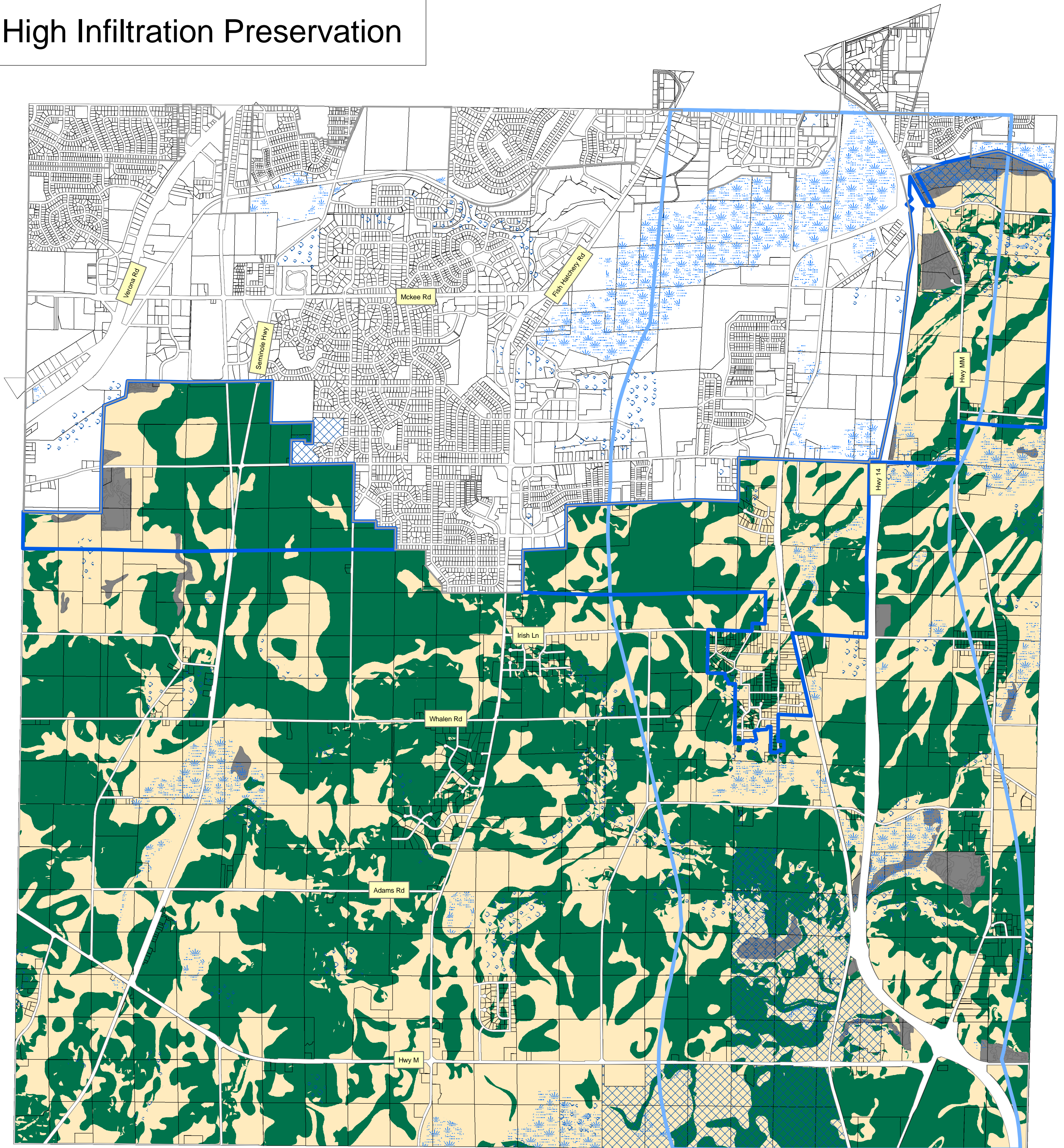
Prepared: April 2007

Source Data: CAPD, Dane County LIO & City of Fitchburg

0 1,000 2,000 4,000 Feet





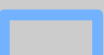

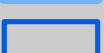



High Infiltration Preservation



Analysis of Infiltration as it Occurs Naturally

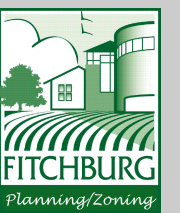
* Permeability is scored based on the most limiting soil layer in the soil column, measured to a depth of five feet.

- | | | |
|--|---|--|
|  Top 25% of Infiltration Opportunities |  Wetlands |  Institutions |
|  Bottom 75% of Infiltration Opportunities |  Woods | |
|  Undetermined - Highly Variable |  Rail Corridor |  Present FUDA Neighborhoods |

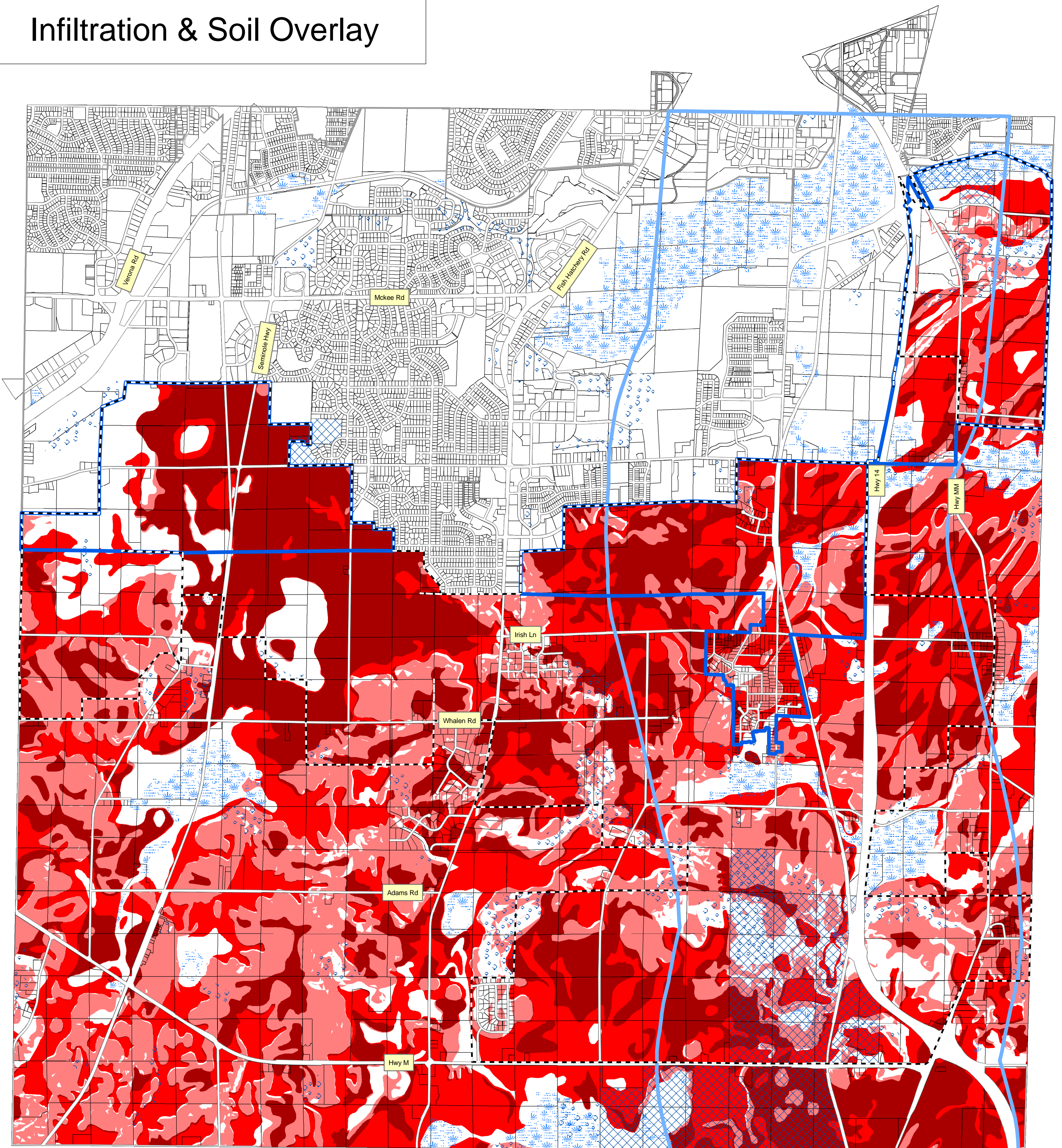
Prepared: April 2007

Source Data: CAPD, Dane County LIO & City of Fitchburg

0 1,000 2,000 4,000 Feet



Infiltration & Soil Overlay



Analysis of Infiltration and Soil Classes 1 and 2

* Map depicting the areas where the top 25% infiltration areas overlap soil classes 1 and 2.

- Top 25% infiltration but not soil classes 1 and 2
- Soil classes 1 and 2 but not top 25% infiltration
- Both top 25% infiltration and soil classes 1 and 2
- Wetlands
- Woods

- Possible Sewer Interceptor
- Present FUDA Neighborhoods
- Rail Corridor

Prepared: April 2007

Source Data: CAPD, Dane County LIO & City of Fitchburg











0 1,000 2,000 4,000 Feet



R9 Extraterritorial Land Division Review Jurisdiction

(Equidistant Boundaries as Described in Wisconsin Statute 66.0105 and Assumes that the Cities of Madison and Verona and the Villages of McFarland and Oregon are Exercising Their Extraterritorial Zoning)

Legend

-  Wetlands
-  Woods
-  Open Water
-  Adopted ETJ 12/13/05
-  Potential 1.5 Mile ETJ
-  City Limits
-  City of Madison
-  City of Monona
-  City of Verona
-  Village of Oregon

Disclaimer: Data that was used for the municipalities outside of Fitchburg may have changed since 2005, when the data was obtained. Data may also not reflect all woods, wetlands, and waterways.

