

In This Issue

1. Winter Biking Workshop Set for Feb. 11th at Fitchburg Cycles
2. Less Salt = Healthier Waters
3. Save the Date: Earth Day, Arbor Day & National Migratory Bird Day Celebrations
4. Fitchburg Library Wants to Turn Your Trash into Treasures

Winter Bike Workshop Set for Feb. 11th at Fitchburg Cycles

Dust off your bike and pump up those tires – biking is no longer just a warm-weather pursuit. Join us on Thursday, Feb. 11th at 6:30 p.m. for this month’s Green Thursday event at **Fitchburg Cycles**, 2970 Cahill Main, to learn some bike maintenance and winter riding tips. Riders of all abilities are encouraged to attend.

- Learn how to dress for cold weather riding
- Check out bikes and cold weather gear
- Share tips for riding safely in snow and ice
- Talk about winter commuting tips and routes
- Take a “winter bike” out for a test ride (weather permitting)
- Bring your bike along and learn some maintenance tips
- Stop by the [Women’s Fat Bike Demo Day](#) on February 13th at Quarry Ridge Recreation Area
- Prepare for [Winter Bike Day](#) on February 17th
- Enjoy **free** pizza compliments of Pizza Hut



This event is sponsored by: the City of Fitchburg’s Resource Conservation Commission and Fitchburg Cycles with support from Fitchburg Bicycling Advocates and Pizza Hut. For more information, visit the City of Fitchburg’s Green Thursday [webpage](#).

Less Salt = Healthier Waters

When it comes to applying salt to walkways and roadways, less is more. The City of Fitchburg is part of the new [Wisconsin SaltWise Partnership](#) that is getting the word out what you can do to keep your walkways safe while also safeguarding our water resources. Once you put salt down, it doesn’t go away. It washes off surfaces and accumulates in local lakes, streams and drinking water.

Look for the “Be Salt Wise!” signs at Dane County deicing salt retailers that help promote responsible practices for keeping walkways, streets, and parking areas safe for travel.

Take these simple steps to keep sidewalks and driveways safe this winter while protecting our waters:

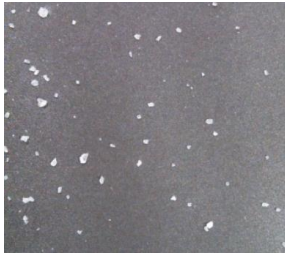
1. Shovel – Clear walkways and other areas before the snow turns to ice. The more snow you remove manually, the less salt you will have to use and the more effective it will be.



Be Salt Wise!

Once you put salt down, it doesn't go away. It washes off surfaces and accumulates in local lakes, streams and drinking water. You can keep sidewalks and driveways safe this winter while protecting our waters by following these simple steps:

- 1. Shovel**
Clear walkways and other areas before the snow turns to ice. The more snow you remove manually, the less salt you will have to use and the more effective it will be.
- 2. Scatter**
If you apply salt to pavement, aim for a pattern like this, leaving space between salt granules. A surface may fall off salt is enough for about 90-110 lbs of snow/ice. A hand spreader can help cover the pattern.
- 3. Switch**
When the pavement temperature is below 15 degrees, salt won't work. Switch to a different ice melter (like a blend) that works at a lower temperature, or use sand for traction.



2. Scatter – If you apply salt to pavement, aim for the “right amount”, leaving plenty of space between salt grains. A coffee mug full of salt is enough for about 60-70 feet of sidewalk. A hand spreader can help create this pattern.
3. Switch – When the pavement temperature is below 15 degrees F, salt won’t work. Switch to a different ice melter (like a blend) that works at a lower temperature, or use sand for traction.

Since 2008 Fitchburg staff has made significant improvements to winter maintenance operations, investing in staff training, new equipment and technologies, and calibrating the equipment to apply the right amounts salt and sand. For more information on the City’s snow and ice removal policies please visit: <http://www.fitchburgwi.gov/225/Snow-Removal>.

If you have ideas for reducing salt impacts to local waterways, please e-mail Fitchburg Public Works.

Earth Day, Arbor Day and Migratory Bird Day 2016 Event Planning is Underway

Mark your calendars to celebrate the 46th Anniversary of Earth Day (April 22, 2016) and the 144th year of Arbor Day (April 29th, 2016). Staff is making plans for the following events from mid-April to early May, and we hope you can join us!

- Annual Waterway Cleanups of Fitchburg’s stormwater facilities and creeks
- Biking, Walking or Paddling Tours in the Nine Springs Creek Watershed
- Shred Day Event for shredding and recycling confidential paper documents
- Electronics Recycling Event for computers, monitors, etc.
- Compost Bin & Rain Barrel Sale
- Spring Community Cleanup Day of Fitchburg Parks and City Hall
- Nine Springs Evening Birding Event – Fri., May 6, 6:30pm
(www.madisonaudubon.org)
- Arbor Day / Earth Day / Migratory Bird Day Celebration on Saturday, May 7: Tree Planting in Fitchburg Parks, and McKee Farms Park Tree Walk & Migratory Bird Day Celebration



If you have ideas for activities that you or your neighborhood association would like to get involved in, please contact Rick Eilertson, Fitchburg Environmental Project Engineer, at 270-4264, or Anna Healy, Fitchburg Urban Forester/Naturalist, at 270-4289. Look for updates on these events on the City of Fitchburg [website](#) and in the March and April editions of *Fitchburg Star*.

Fitchburg Library Wants to Turn Your Trash into Treasures



Your local children's librarians are once again in need of paper tubes. Please send any extra toilet paper tubes, paper towel rolls, or wrapping paper rolls to the library at 5530 Lacy Rd. Any paper roll will do! They are also looking for glass baby food jars for a Tween Spa program.

Community Calendar

- [Yahara Lakes 101: Pollution Prevention](#), Feb. 11, 8-9 a.m. at the Edgewater Hotel, 1001 Wisconsin Place.



* * * * *

Please contact Erika Kluetmeier, Sustainability Specialist, at erika.kluetmeier@fitchburgwi.gov or 270-4274 if you have any questions, comments, and/or suggestions on future Green E-News topics.